

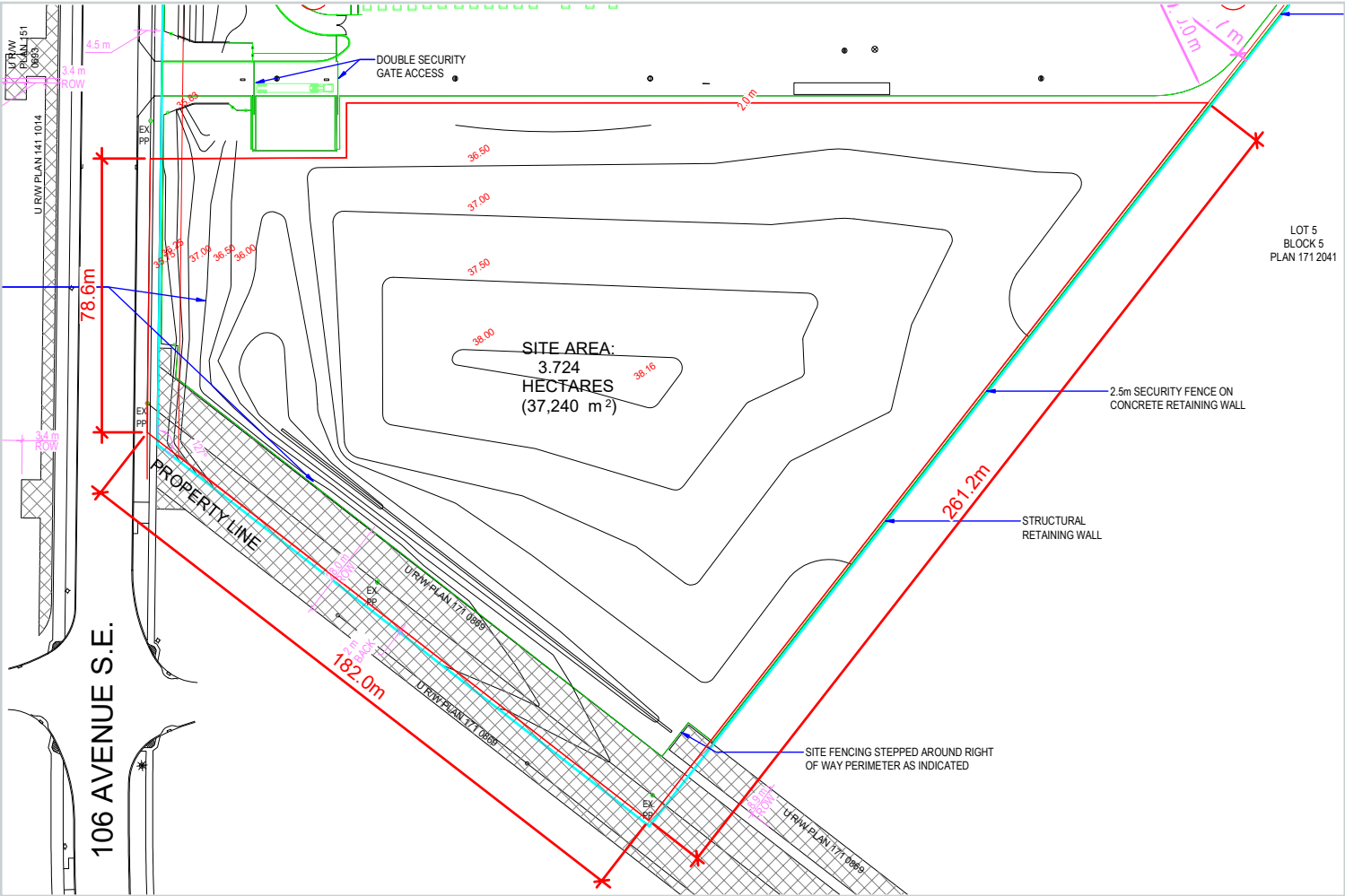
6202 106 Avenue SE

Calgary, Alberta

Approximately 9.20 Acres of Industrial Development Land in Southeast Calgary



6202 106 Avenue SE
Calgary, Alberta | T2C 4Z8



Zoning DC (Direct Control) - IP2007

Site Area ±9.20 Acres

Property Taxes TBD

Asking Price \$775,000.00/acre

Availability Negotiable

For Sale

DC

Zoning

±9.20

Site Size (Acres)

\$775k

Asking Price (Per Acre)

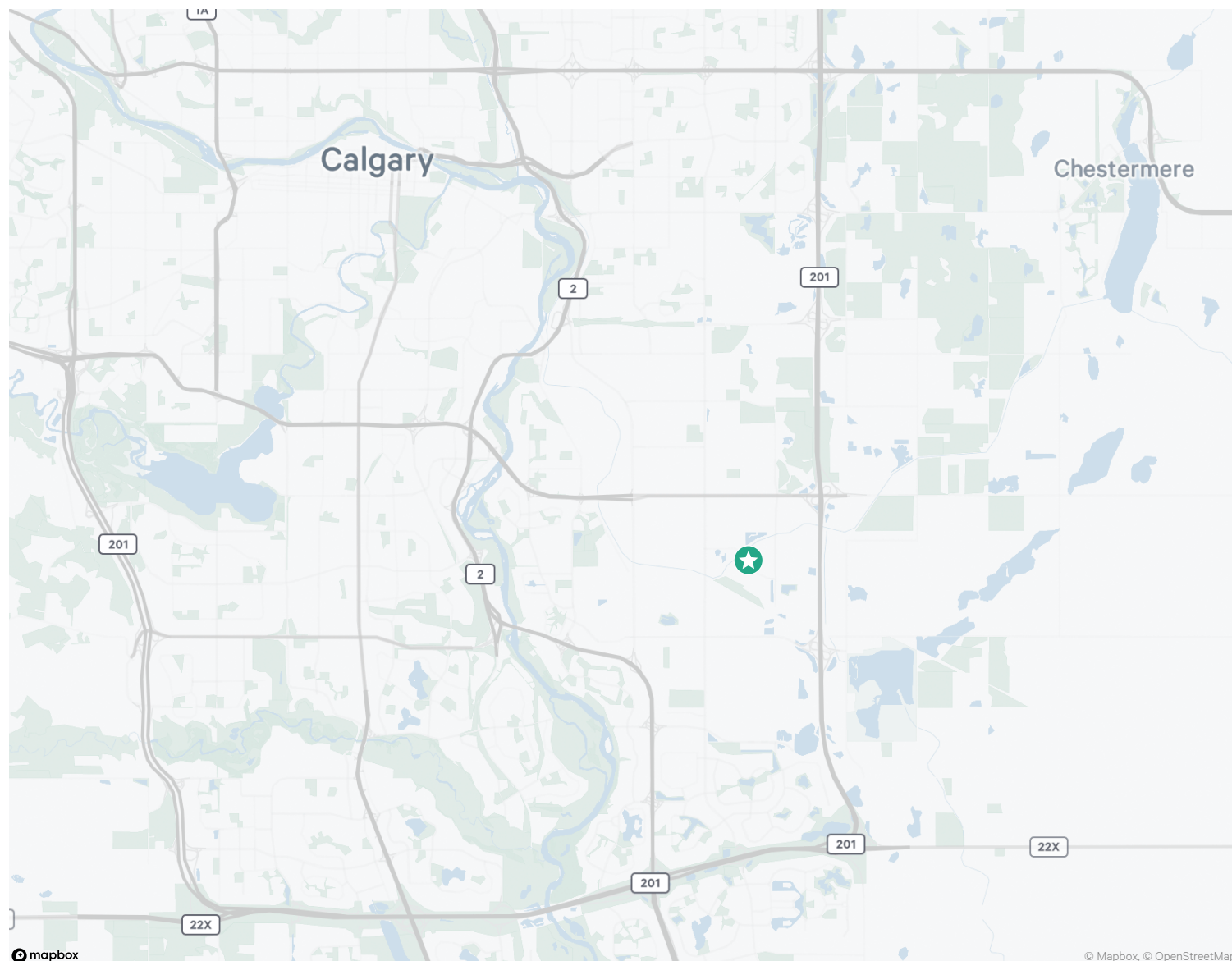
Property Highlights

- + Property to be delivered subdivided, with full municipal services to property line and a dedicated access point from 106 Avenue SE
- + Located in North Dufferin, one of Calgary's most accessible industrial parks
- + Excellent proximity to the CP Intermodal
- + Close proximity to various major thoroughfares, 106 Avenue, 52 Street, Glenmore Trail, Stoney Trail and Deerfoot Trail



6202 106 Avenue SE
Calgary, Alberta | T2C 4Z8

For Sale



Contact Us

Iain Ferguson

Vice Chairman
+1 403 750 0803
iain.ferguson@cbre.com
*Lead Broker

Luke Hamill

Senior Vice President
+1 403 294 5707
luke.hamill@cbre.com
*Lead Broker

Cameron Woods

Associate Vice President
+1 403 303 4562
cameron.woods@cbre.com

Blake Ellis

Associate Vice President
+1 403 750 0519
blake.ellis@cbre.com

Evan Renwick

Associate Vice President
+1 403 750 0807
evan.renwick@cbre.com

This disclaimer shall apply to CBRE Limited, and to all divisions of the Corporation ("CBRE"). The information set out herein (the "Information") has not been verified by CBRE, and CBRE does not represent, warrant or guarantee the accuracy, correctness and completeness of the Information. CBRE does not accept or assume any responsibility or liability, direct or consequential, for the Information or the recipient's reliance upon the Information. The recipient of the Information should take such steps as the recipient may deem necessary to verify the Information prior to placing any reliance upon the Information. The Information may change and any property described in the Information may be withdrawn from the market at any time without notice or obligation to the recipient from CBRE.