



EXECUTIVE SUMMARY
954 W BREVARD ST
 TALLAHASSEE, FL 32304



OFFERING SUMMARY

Sale Price:	\$325,000.00
Lot Size:	0.31 Acres
Year Built:	1957
Building Size:	2,688 SF
APN:	21-26-20-512-0000
Zoning:	CU-45

[Click for Zoning Information](#)

PROPERTY OVERVIEW

Great little property within 3 minutes of walking to classrooms at FSU. Superb location for a gated office, student parking lot, or ground-up construction project of 6 Townhome Units. Developer-owned. The owner will provide all financials and clear vetted underwriting of development potential. The property is priced great for a new development or Student parking lot.

Perfect for a covered land play. Interest rate improvement would increase the LIRR, but as is and in this current operating environment, it's a pretty solid deal using current rates or all Cash. ****See Income Evaluation on page 4****

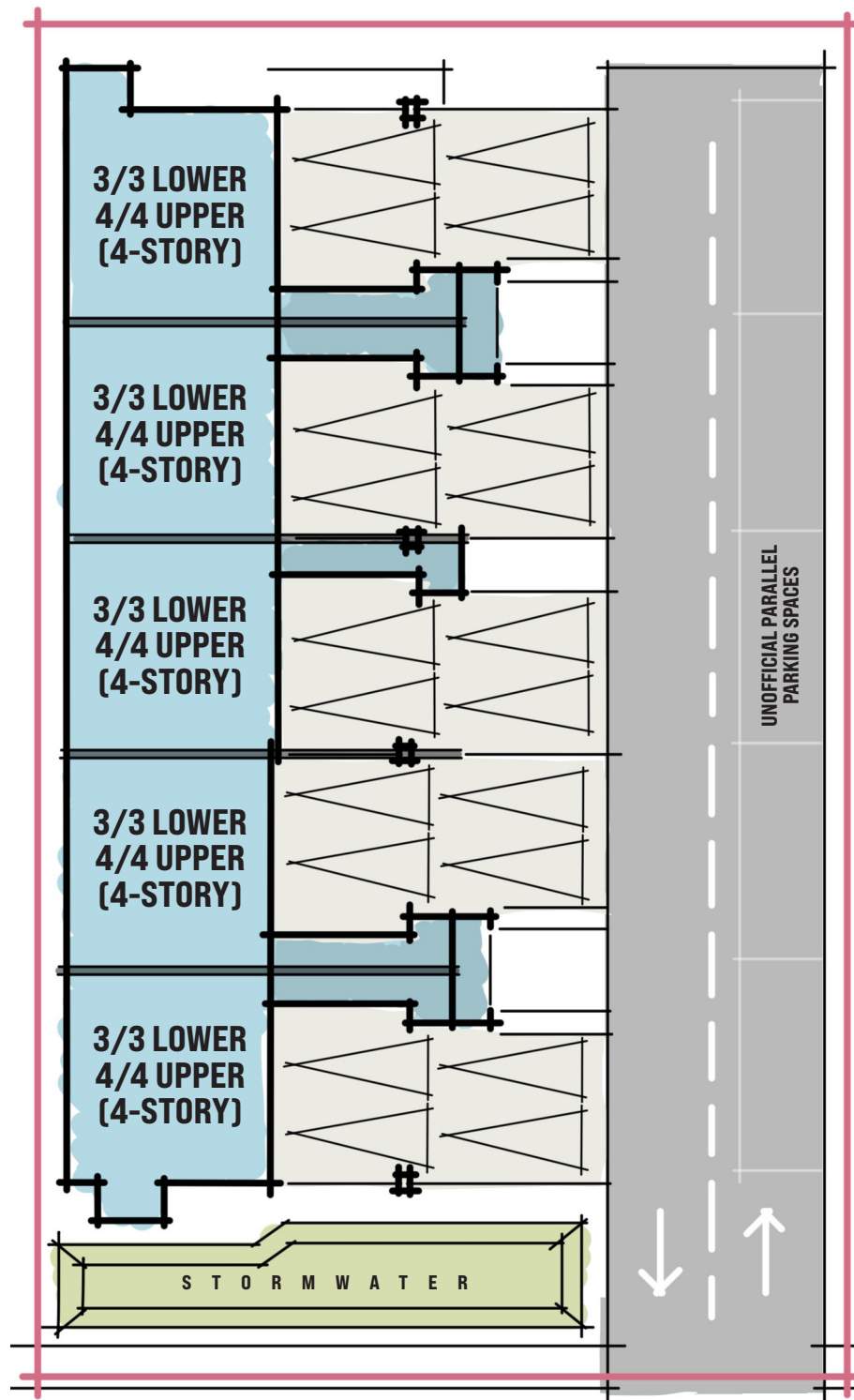
LOCATION OVERVIEW

This property is located just off of Tennessee Street in Tallahassee, Florida. The property is surrounded by student housing and just minutes away from the FSU Alumni Center, the FSU President's Official Residence, and Florida State University.

Trey DeSantis
 850.766.6868
trey@tlgproperty.com

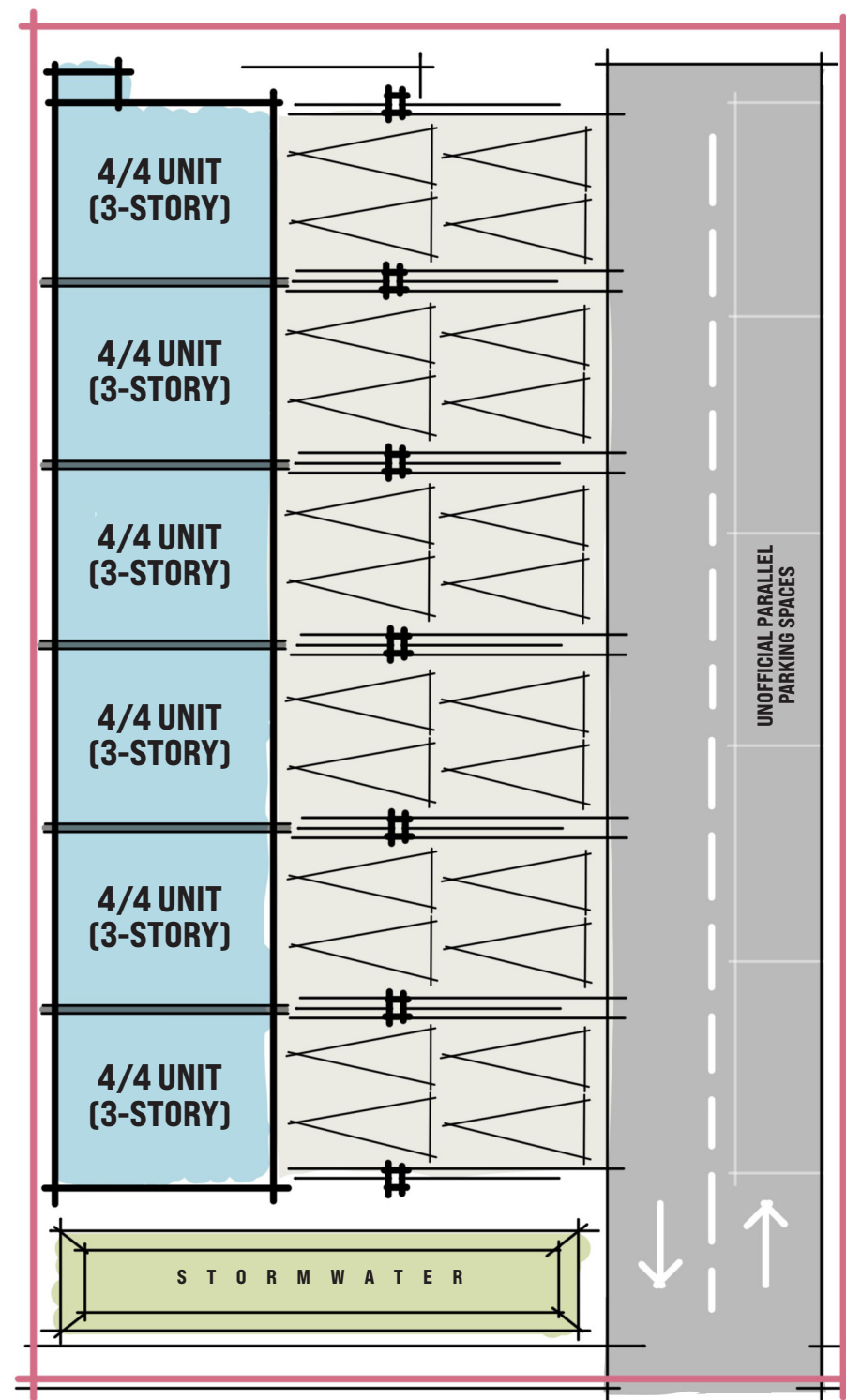
TLG REAL ESTATE SERVICES
 3520 Thomasville Road, Suite 200, Tallahassee, FL 32309
 850.385.6363





TEST-FIT A

Scale: 1"=20'



TEST-FIT B

Scale: 1"=20'

954 W BREVARD HOUSING TALLAHASSEE, FLORIDA

Unit Breakdown

Test-Fit A

10 Units:

(5) 3 bedroom / 3 bath

(5) 4 bedroom / 4 bath

15 + 20 =

35 beds / 10 kitchens

25 parking spaces (5 of which are unofficial)

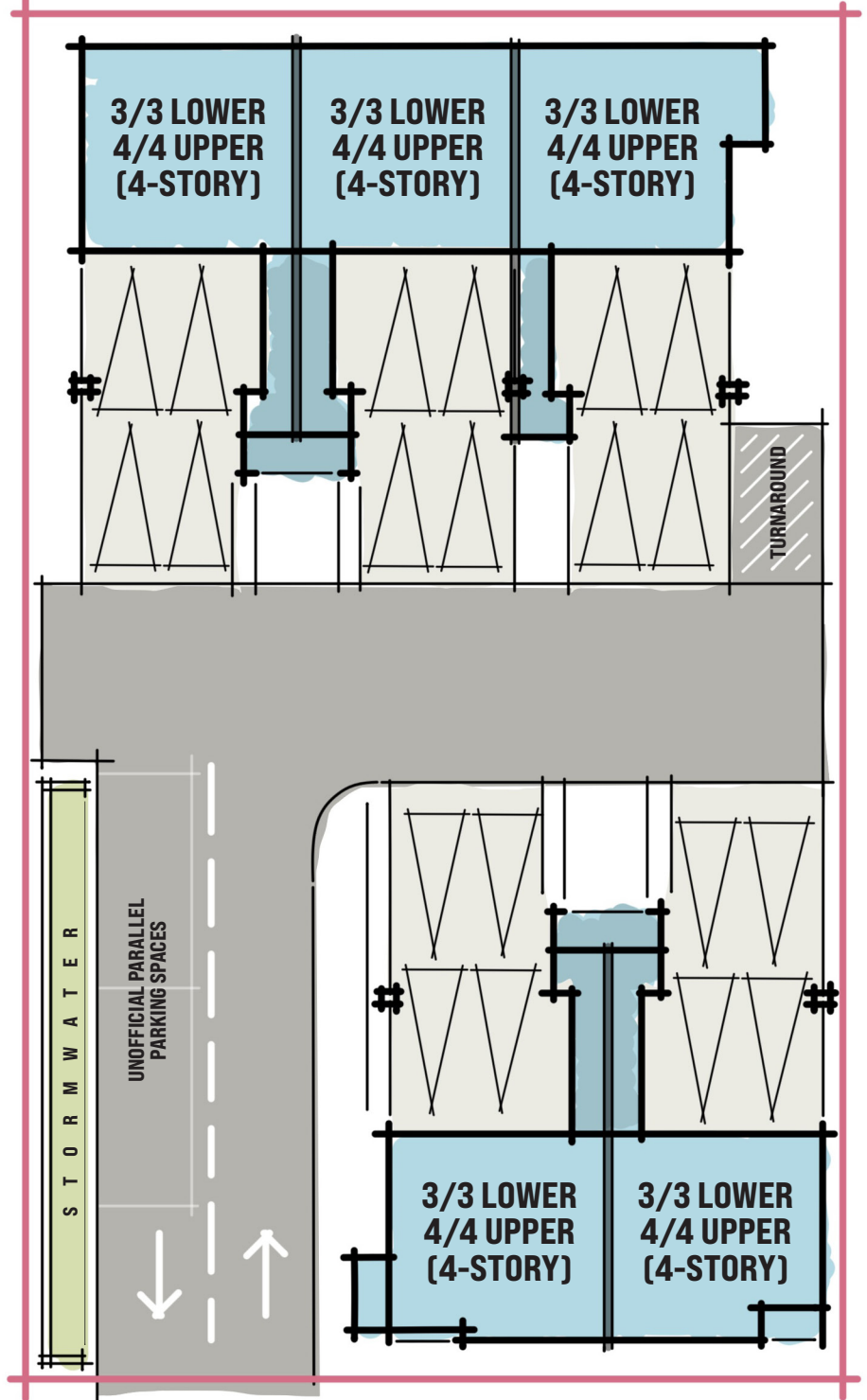
Test-Fit B

6 Units:

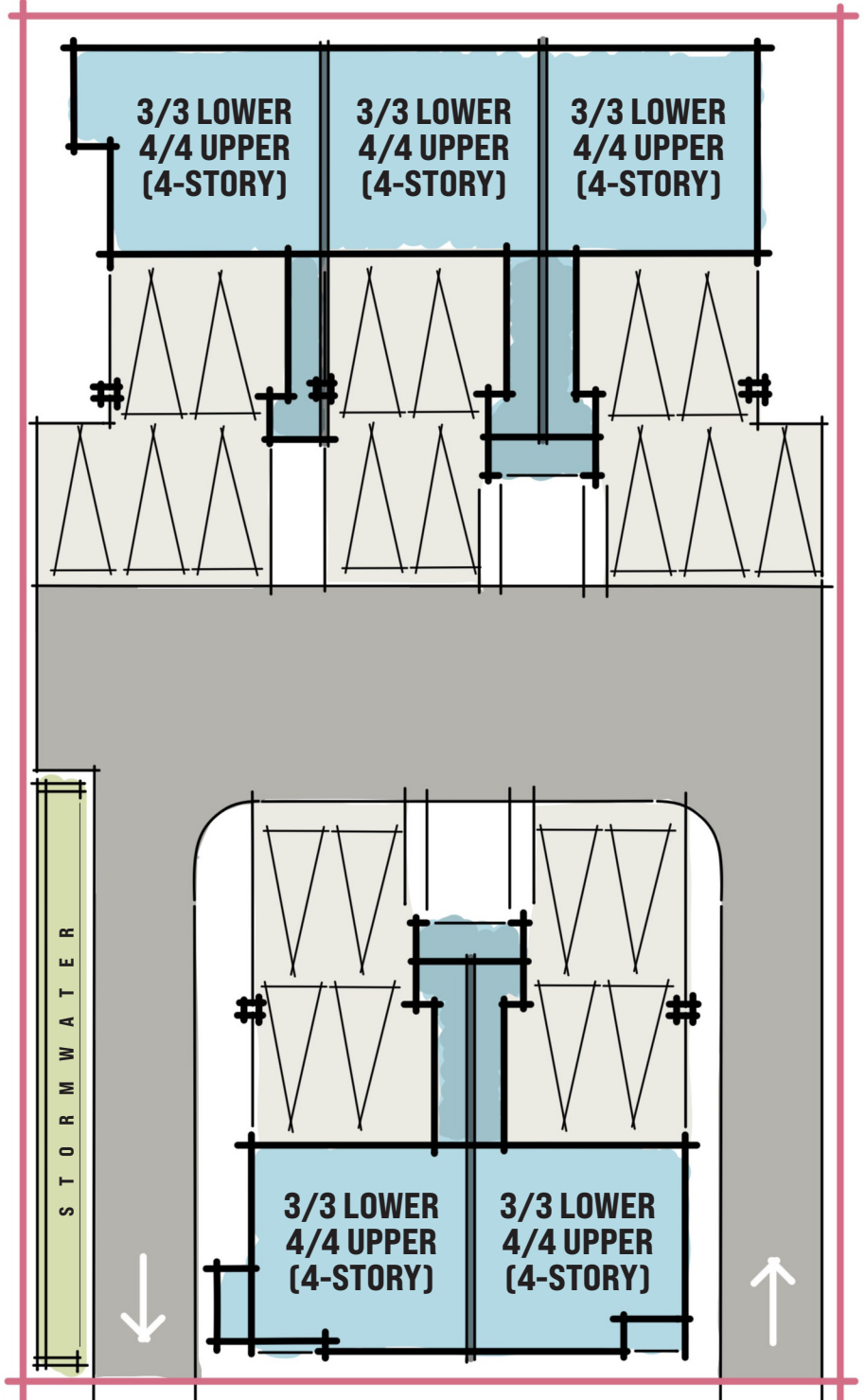
(6) 4 bedroom / 4 bath

24 beds / 6 kitchens

29 parking spaces (5 of which are unofficial)



TEST-FIT C
Scale: 1"=20'



TEST-FIT D
Scale: 1"=20'

954 W BREVARD HOUSING TALLAHASSEE, FLORIDA

Unit Breakdown

Test-Fit C
10 Units:
(5) 3 bedroom / 3 bath
(5) 4 bedroom / 4 bath
15 + 20 =
35 beds / 10 kitchens
22 parking spaces (2 of which are unofficial)

Test-Fit D
10 Units:
(5) 3 bedroom / 3 bath
(5) 4 bedroom / 4 bath
15 + 20 =
35 beds / 10 kitchens
22 parking spaces

INCOME EVALUATION:

AS-IS: 2,688 SF Office Building/Covered Land Play (5.3% cap rate)

- Six office spaces, two conference rooms, a break room, and bathrooms.
- Market Base rent is \$28,800/year minus \$8,500/year expenses = **NOI \$20,300**

Student Parking Lot of 30 spaces: (6.6% cap rate)

- Building can be demolished for \$12,000
- 30 spaces x \$85/month = \$30,600/year minus \$5,200/year = **NOI \$25,400**

6 Unit 24 Bed Student Townhome Development w/ 28 parking spaces:

(Stabilized return on cost: 6.78%)

(using 67% LTV with 8% construction loan and 5.5% perm debt)

-Land Cost: \$16,041/Bed (\$385,000)

-Total Acquisitions and Development Cost: \$3,016,017

-**Stabilized Value: \$3,686,660**



ADDITIONAL PHOTOS
954 W BREVARD ST
 TALLAHASSEE, FL 32304



Trey DeSantis
 850.766.6868
 trey@tlgproperty.com

TLG REAL ESTATE SERVICES
 3520 Thomasville Road, Suite 200, Tallahassee, FL 32309
 850.385.6363

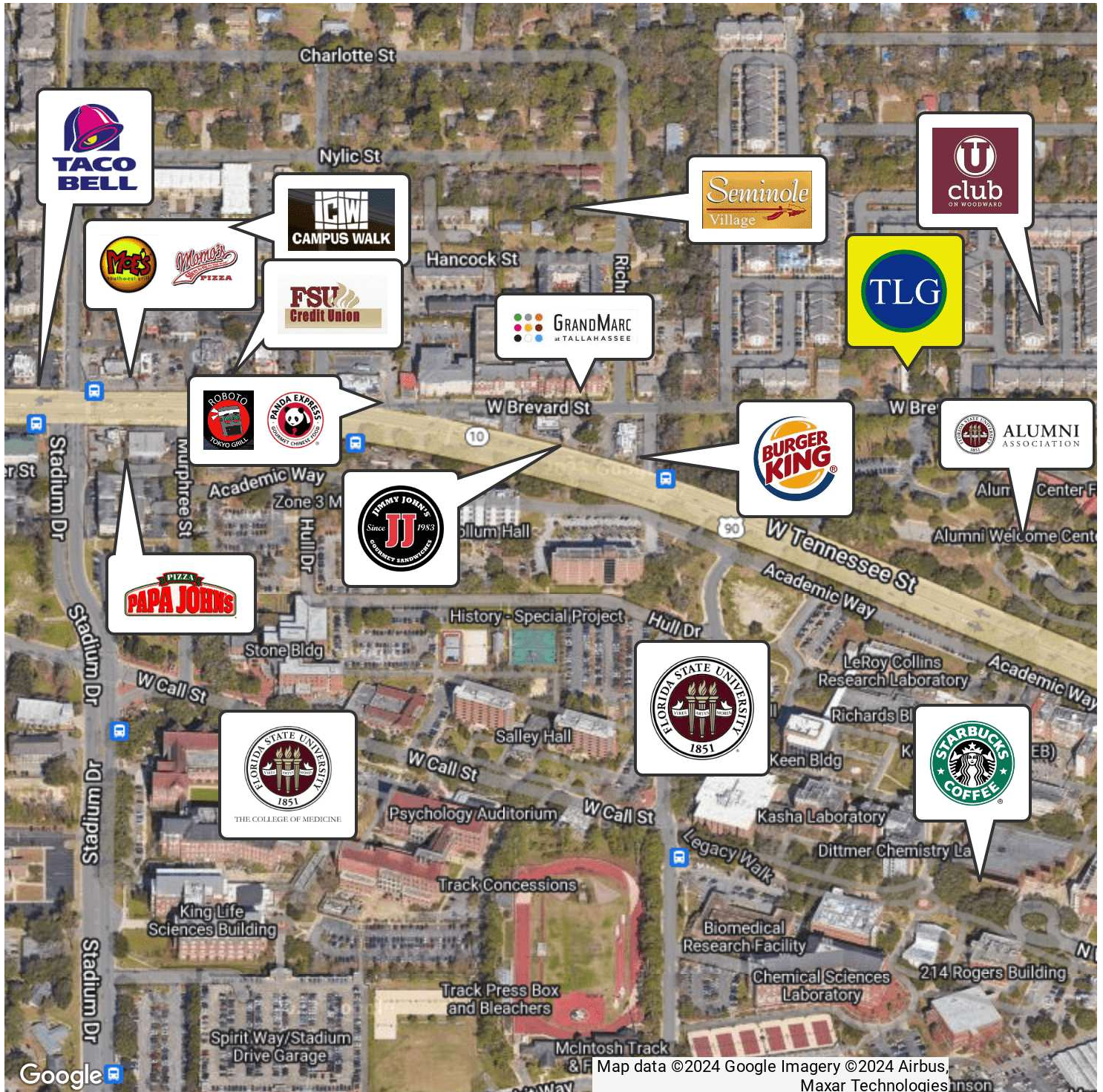




RETAILER MAP

954 W BREVARD ST

TALLAHASSEE, FL 32304



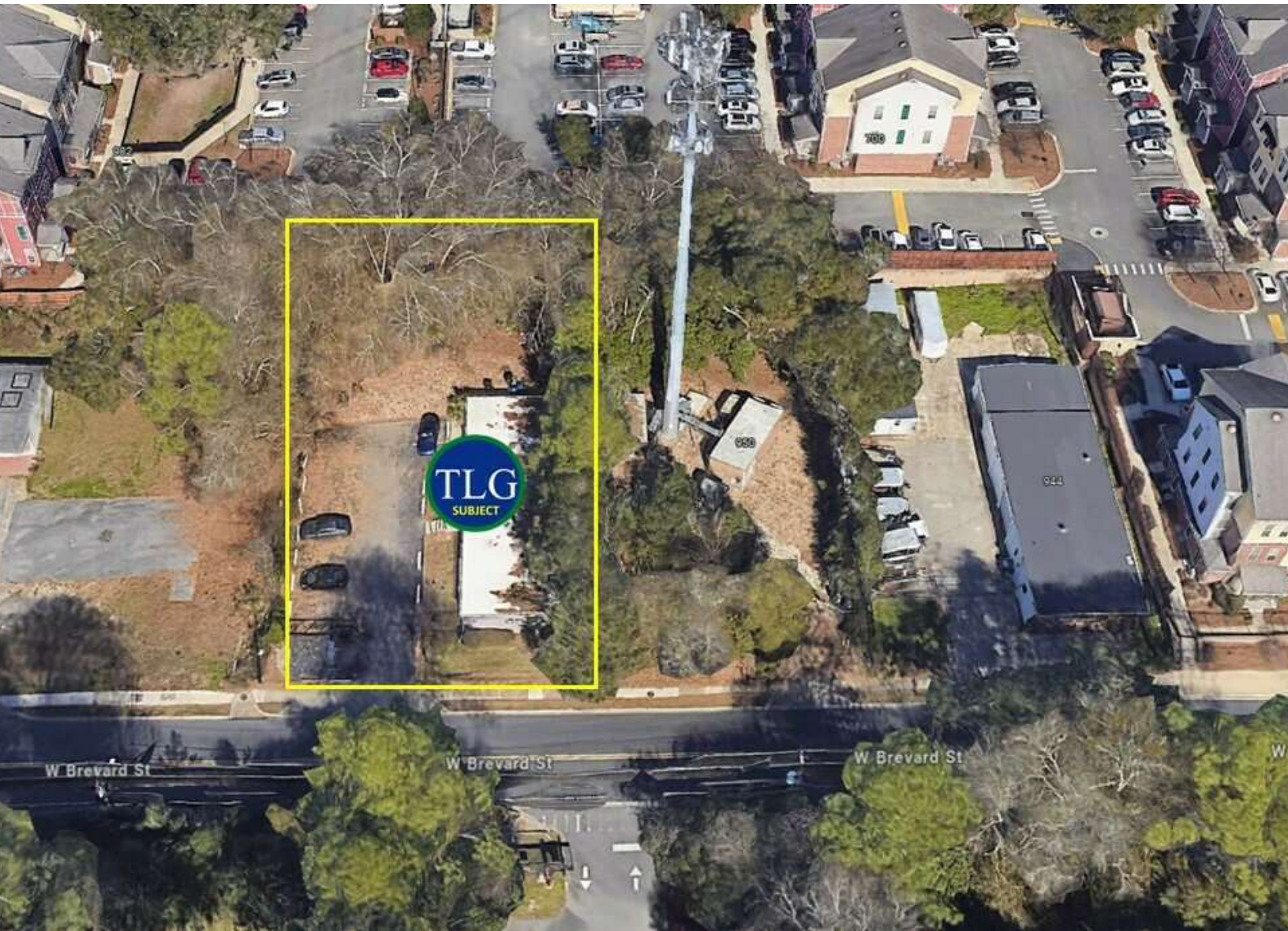
Trey DeSantis
850.766.6868
trey@tlgproperty.com

TLG REAL ESTATE SERVICES
3520 Thomasville Road, Suite 200, Tallahassee, FL 32309
850.385.6363





ADDITIONAL PHOTOS
954 W BREVARD ST
TALLAHASSEE, FL 32304



Trey DeSantis
850.766.6868
trey@tlgproperty.com

TLG REAL ESTATE SERVICES
3520 Thomasville Road, Suite 200, Tallahassee, FL 32309
850.385.6363

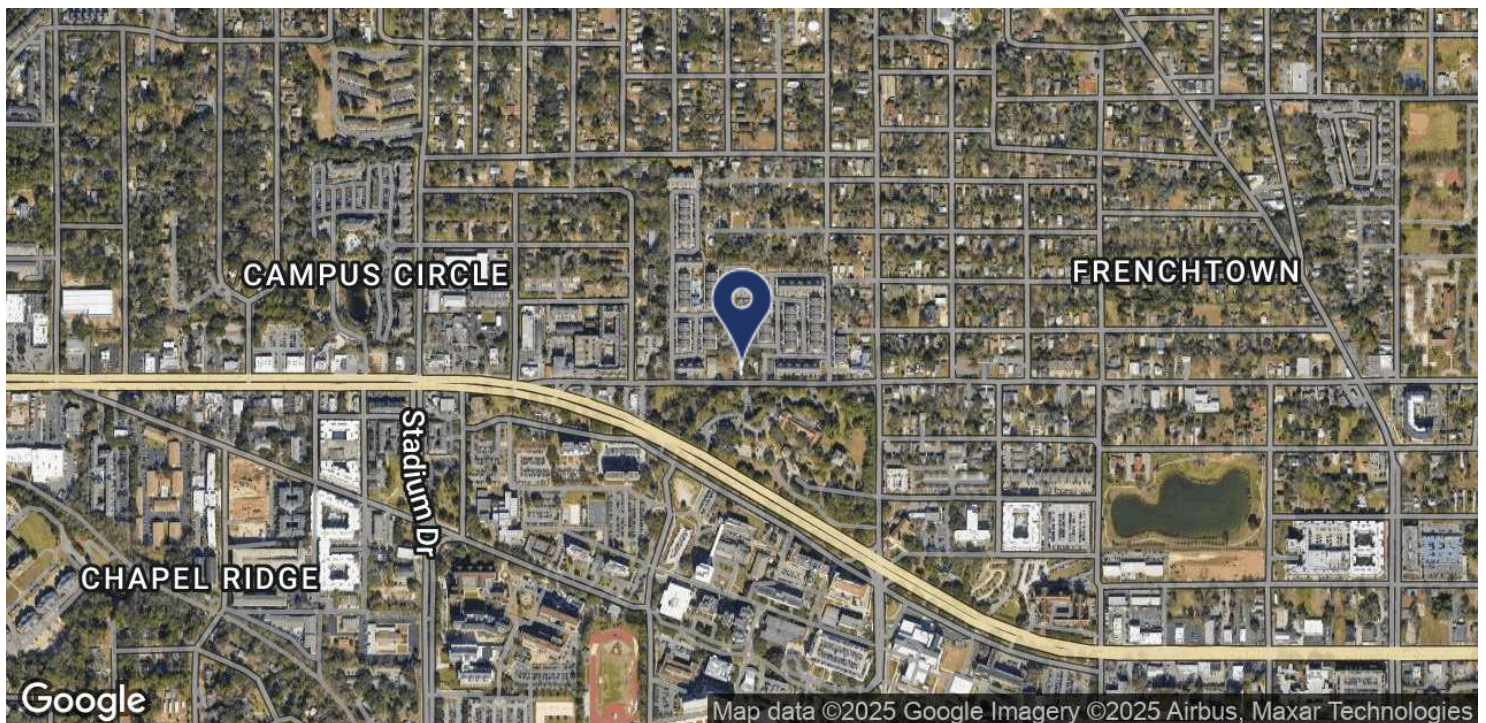
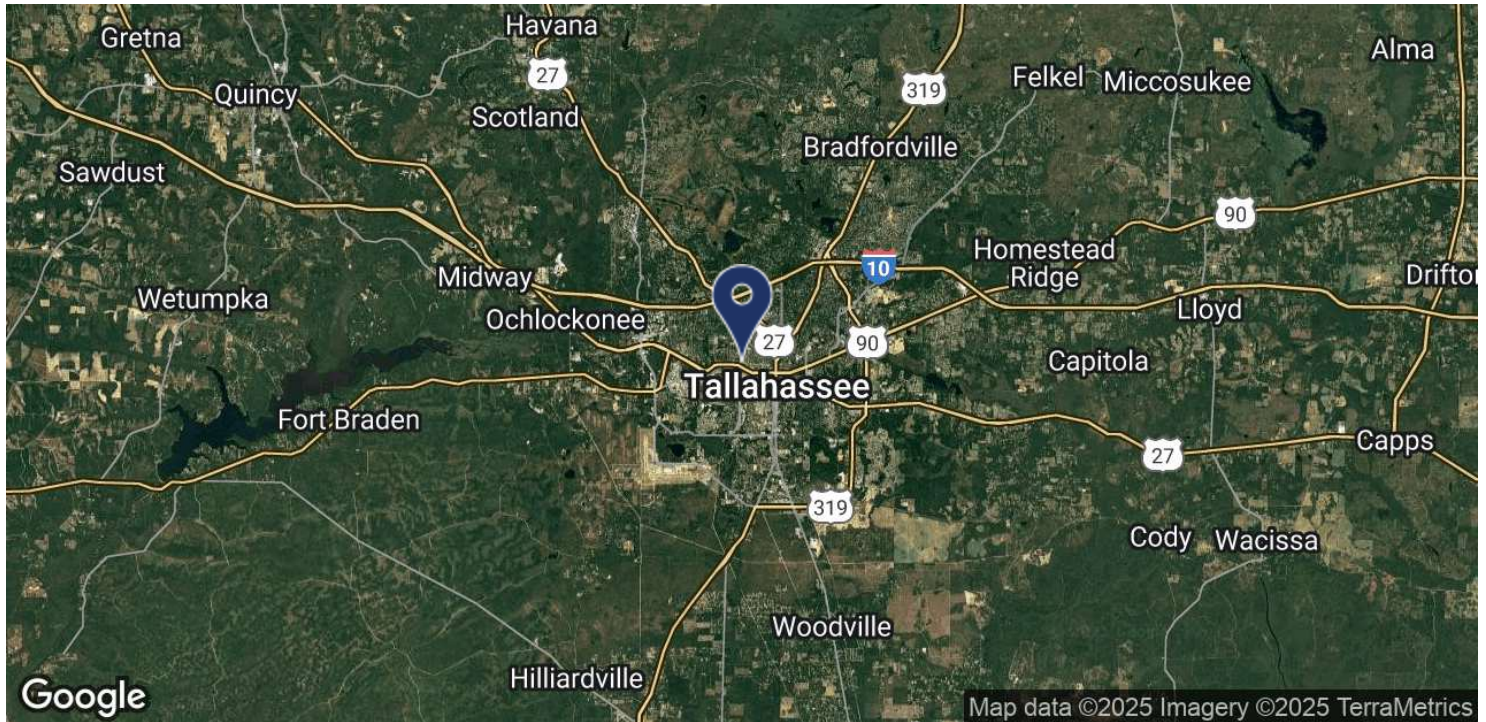




LOCATION MAP

954 W BREVARD ST

TALLAHASSEE, FL 32304



Trey DeSantis
850.766.6868
trey@tlgproperty.com

TLG REAL ESTATE SERVICES
3520 Thomasville Road, Suite 200, Tallahassee, FL 32309
850.385.6363



