



## FOR LEASE

Class-A Industrial Park

Availabilities:

**BUILDING 100** 100% LEASED

**BUILDING 200** 100% LEASED

**BUILDING 300** 135,855 SF

1343, 1345 & 1347  
Cass-White Road  
White, Georgia 30184

# CASS-WHITE LOGISTICS CENTER



For Leasing Information:

**ADAM RICHARDS**

P: (404) 760-7181  
arichards@reliant-re.com

**TYLER FANN**

P: (404) 760-7182  
tfann@reliant-re.com

**MIKE WEINBERGER**

P: (404) 760-7183  
mweinberger@reliant-re.com

**BUILDING 100**  
1343 Cass-White Road  
793,563 SF Total

LEASED

**BUILDING 200**  
1345 Cass-White Road  
217,542 SF Total

LEASED

**BUILDING 300**  
1347 Cass-White Road  
204,041 SF Total

AVAILABLE  
135,855 SF

LEASED

FUTURE PARKING  
/ I/O'S

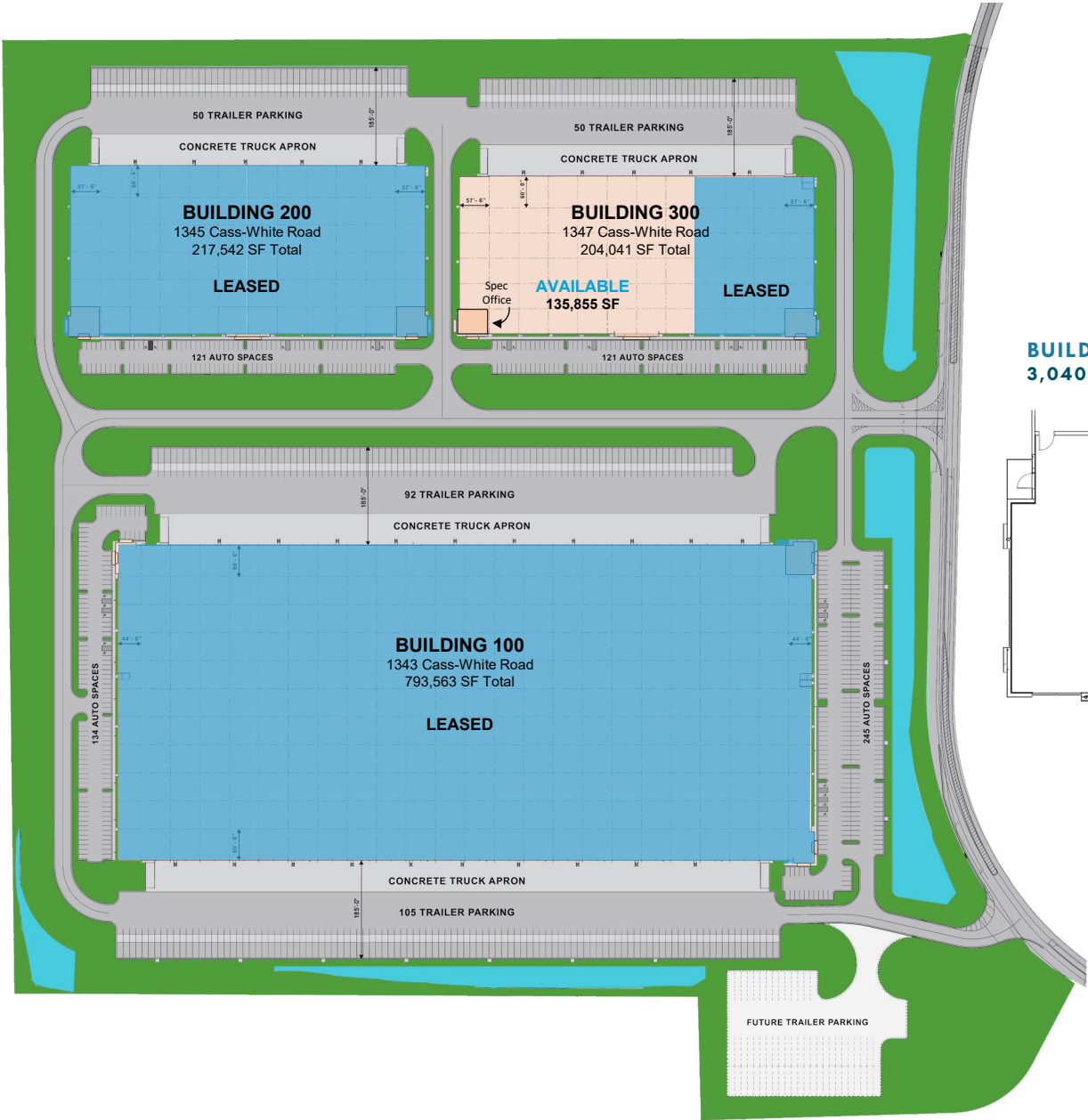
**ABOUT THIS PROPERTY**

Located 45 minutes north of Atlanta in Bartow County, Cass-White Logistics Center is a Class A industrial park featuring state-of-the-art building specifications, first-generation spec offices and ample trailer storage. With superior access to one of the state's largest interstates (I-75) and a readily available labor pool, this property is a prime location for light manufacturing, warehouse/distribution and service operations.

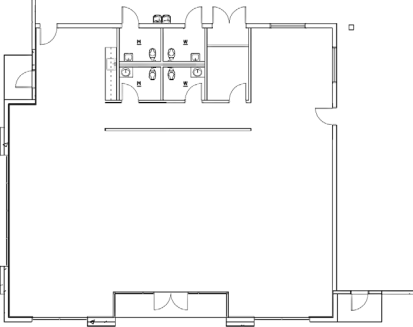
Cass-White Road

**BUILDING 300**

- 204,041 SF total building
- **135,855 SF available**
  - **3,040 SF office**
- 32' minimum clear height
- 56' x 48' column spacing
- 60' speed bays
- 300' building depth
- Rear-load configuration
- 185' truck court depth
- 24 dock doors and 1 drive-in door
- 7 40k lb. mechanical pit levelers
- 7 dock lights
- 81 auto spaces
- 33 trailer spaces
- LED warehouse lighting
  - 30 FC at 30" A.F.F.
- 1 1/2 air changes per hour



**BUILDING 300  
3,040 SF Office**



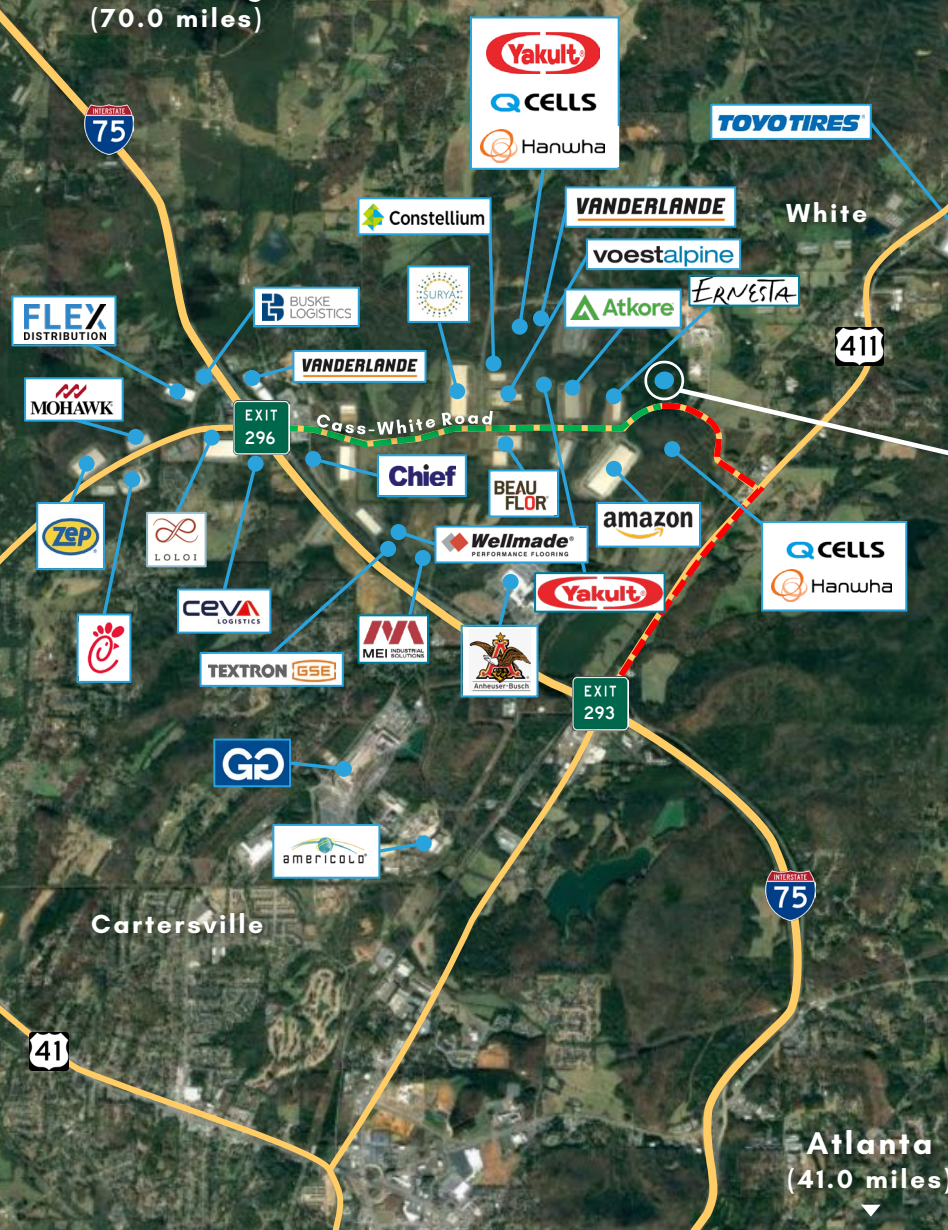
This document has been prepared by Reliant Real Estate Partners, LLC for advertising and general information only. Reliant Real Estate Partners, LLC makes no guarantees, representations, or warranties of any kind, expressed or implied, regarding the information including, but not limited to, warranties of content, accuracy, and reliability. Any interested party should undertake their own inquiries as to the accuracy of the information. Reliant Real Estate Partners, LLC excludes unequivocally all inferred or implied terms, conditions and warranties arising out of this document and excludes all liability for loss and damages arising therefrom. This publication is the copyrighted property of Reliant Real Estate Partners LLC and/or its licensor(s). © 2024 All rights reserved.

Chattanooga  
(70.0 miles)

NW ATLANTA  
SUBMARKET



Southeast City	Distance
Atlanta, GA	41.0 miles
Chattanooga, TN	70.0 miles
Nashville, TN	203 miles
Huntsville, AL	133 miles
Birmingham, AL	150 miles
Knoxville, TN	167 miles
Macon, GA	133 miles
Augusta, GA	195 miles
Greenville, SC	182 miles
Charlotte, NC	281 miles



**Drive Times to Nearby Exits**

- I-75 (Exit 296) via Cass White Road  
2.5 miles | 6 minutes
- I-75 (Exit 293) via Cass White Road & US 411  
2.8 miles | 4 minutes

Interstate 75: 2.5 miles  
 Interstate 575: 27.2 miles  
 Interstate 20: 52.4 miles  
 Interstate 285: 39.8 miles

CSX / Fairburn: 67 miles  
 CSX / Hulsey: 51 miles  
 NFS / Inman: 46 miles  
 NFS / Austell: 37 miles

Hartsfield-Jackson  
International Airport: 59.2 miles

Port of Savannah: 298 miles  
 Port of Brunswick: 361 miles  
 Port of Charleston: 348 miles  
 App. Regional Port: 47 miles