

# 99-01 QUEENS BLVD

QUEENS BLVD AND 67TH AVENUE, QUEENS, NY



## AVAILABILITY

### PREMISES

+/-398 SF. WEST GROUND FLOOR  
 +/-2,298 SF. EAST GROUND FLOOR  
 +/-17,050 SF. SECOND FLOOR  
**+/-19,746 SF. TOTAL**

### CEILING HEIGHT

+/-15'-0" GROUND FLOOR  
 +/-13'-6" SECOND FLOOR

### BUILDING USES

- OFFICE
- MEDICAL OFFICE
- IMAGING CENTER
- RETAIL
- SCHOOL
- GYMNASIUM

### TENANTS

- MT. SINAI
- NYSC



### RADIUS



0.5 MILE  
 1 MILE  
 3 MILE

### POPULATION

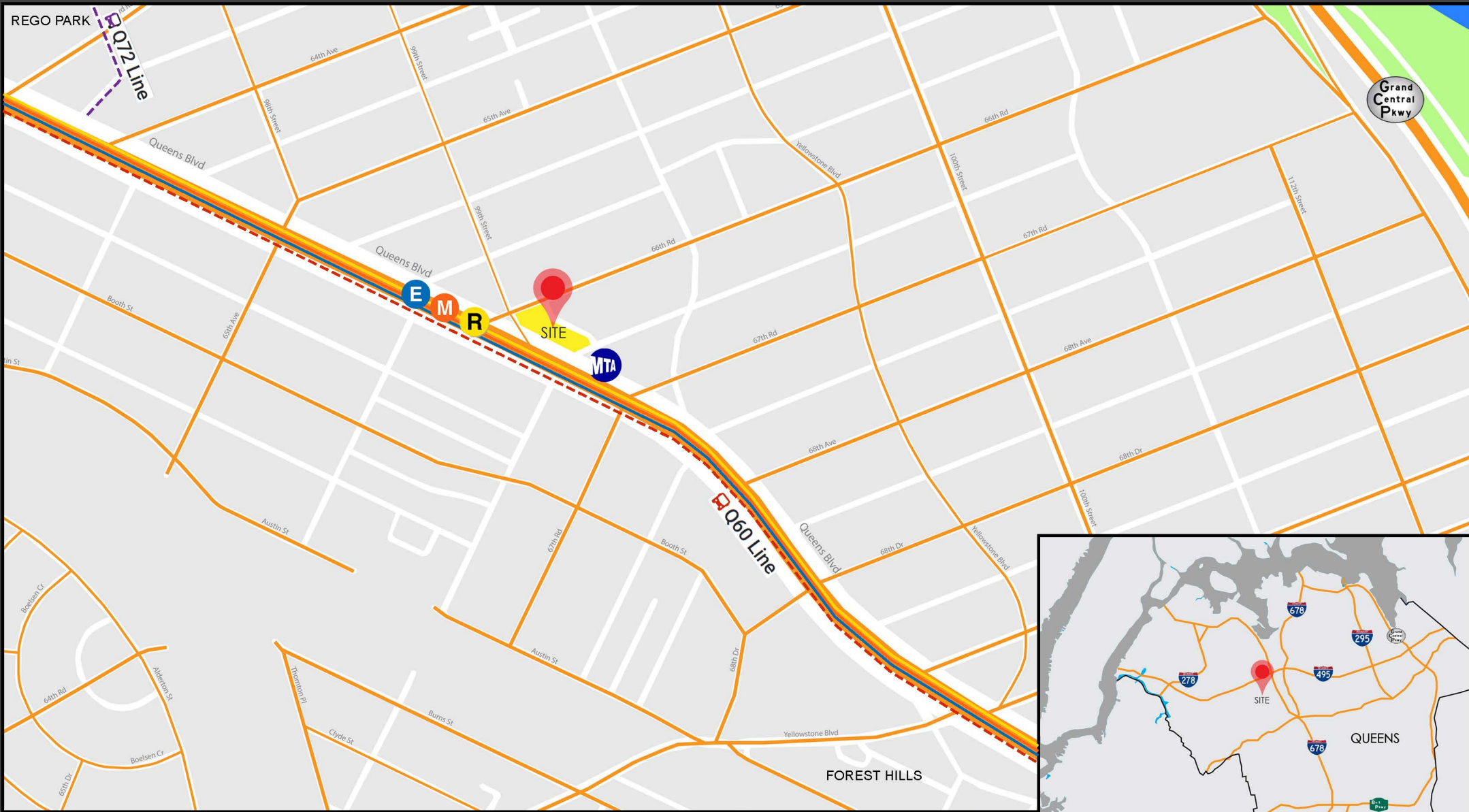


54,794  
 141,288  
 981,094

### AVERAGE HOUSEHOLD INCOME



\$79,850  
 \$79,412  
 \$72,966

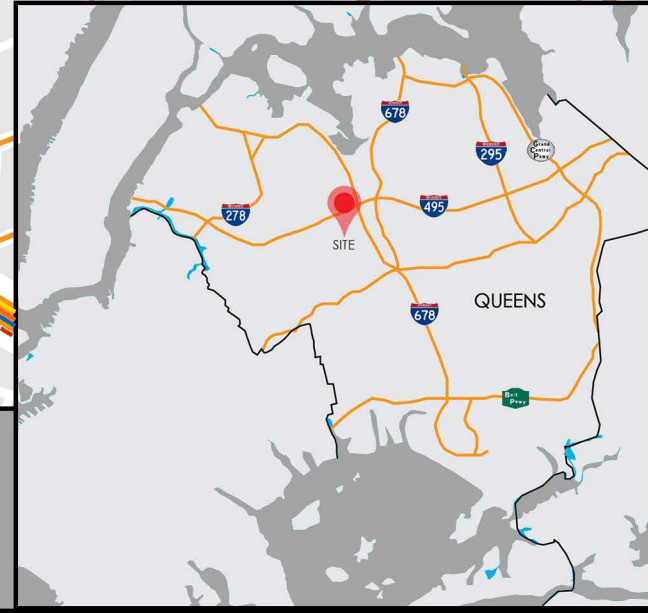


MAJOR  
RETAIL  
CORRIDOR

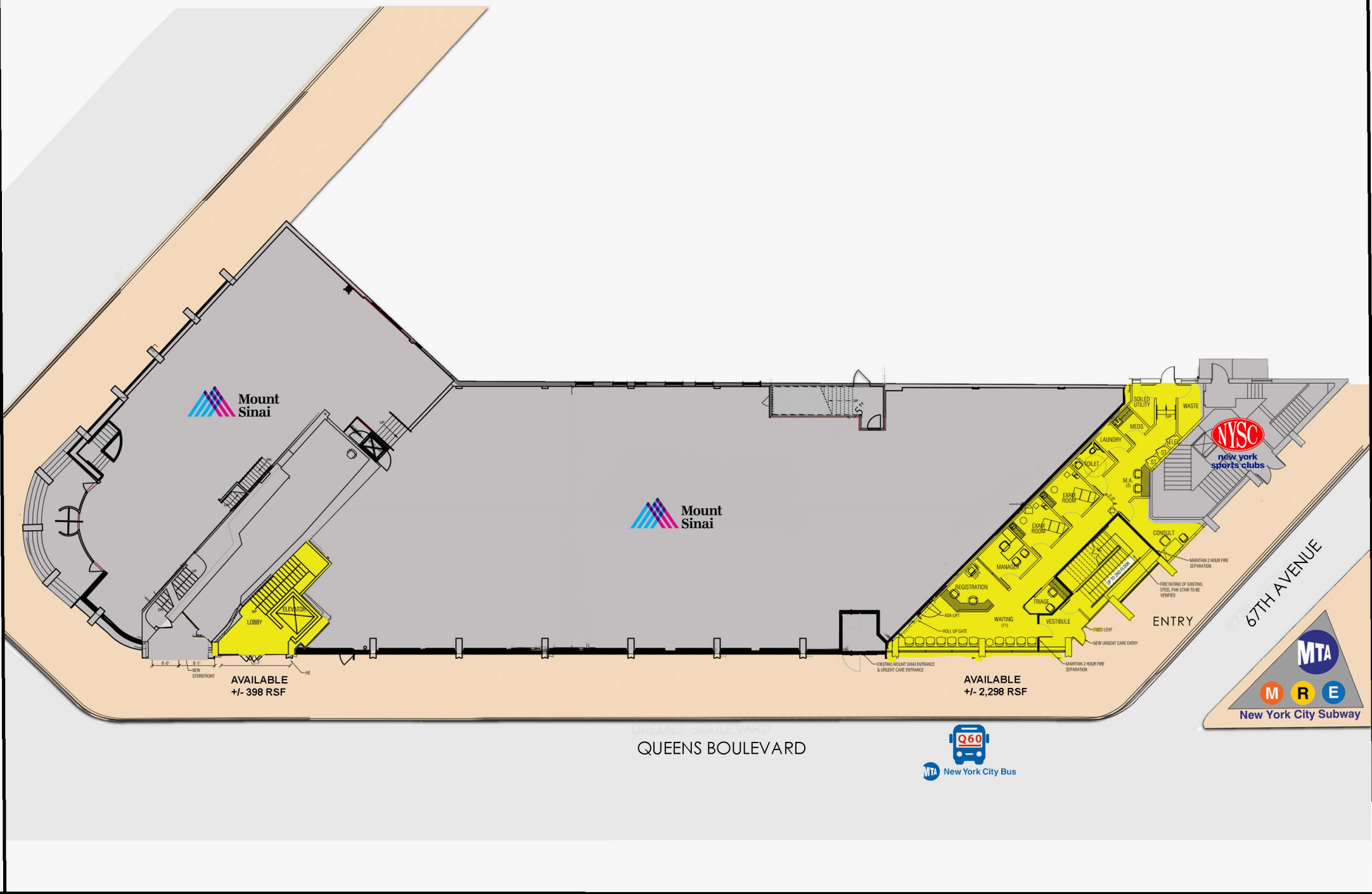
EASILY ACCESSIBLE  
FROM THE LONG  
ISLAND EXPRESSWAY  
AND GRAND CENTRAL



LOCATED ONE  
BLOCK FROM  
THE **E**, **M** & **R**  
SUBWAY LINES

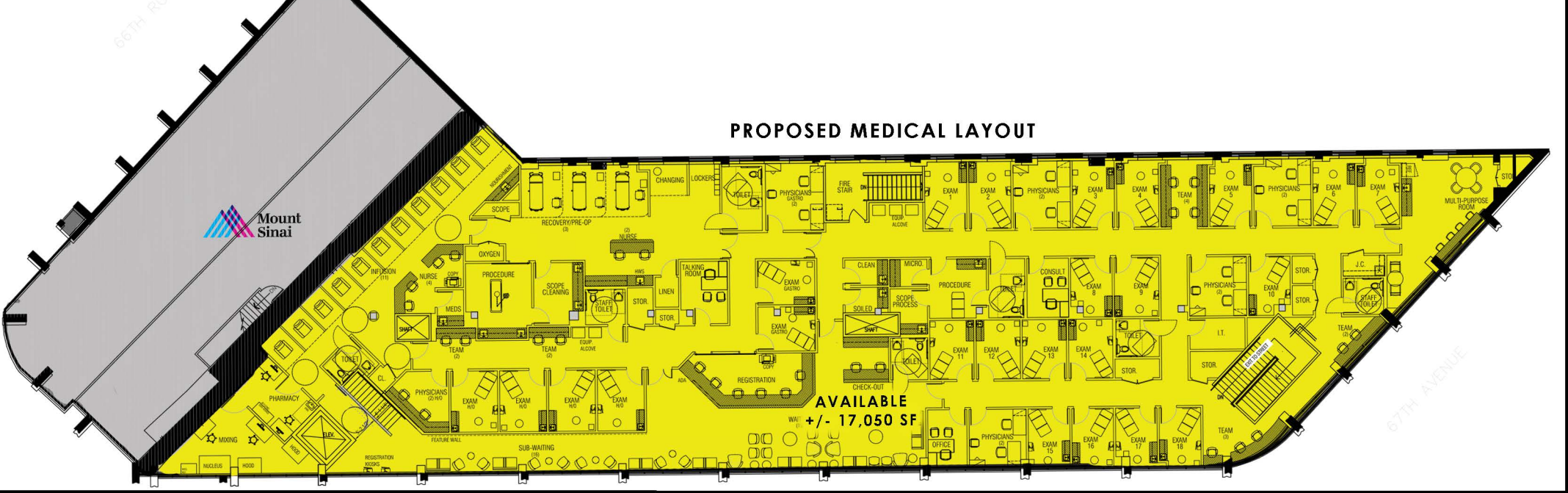
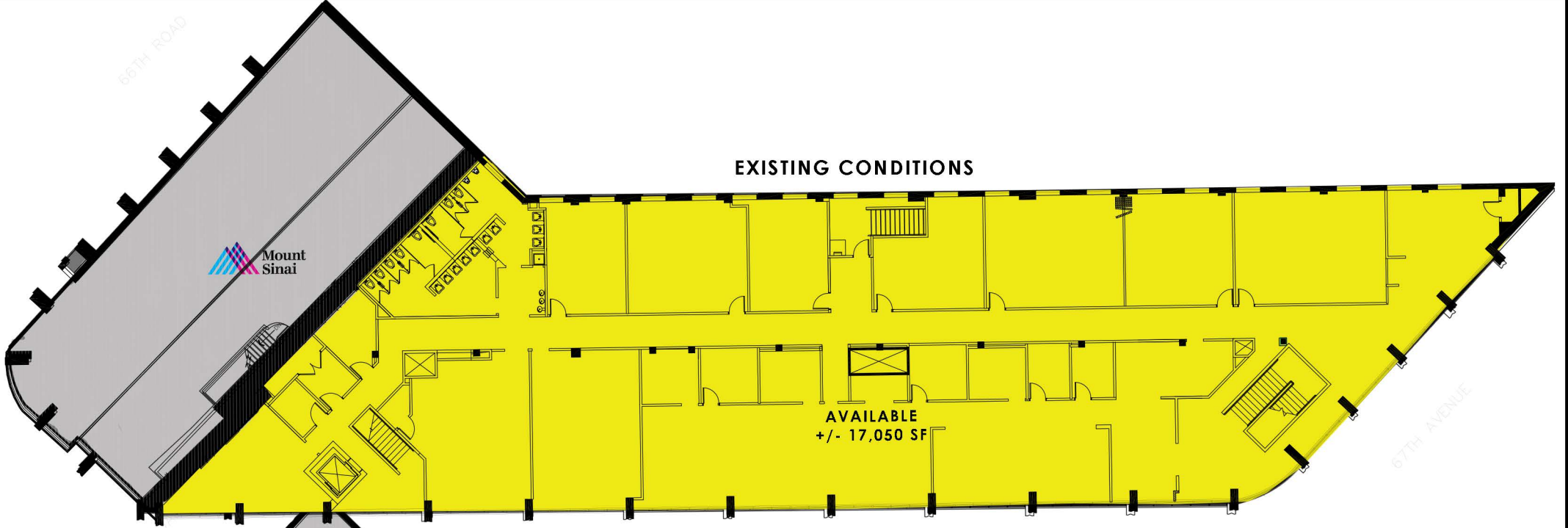


**BDG** 99-01 QUEENS BLVD



**GROUND FLOOR PLAN**

**BDG** 99-01 QUEENS BLVD



**SECOND FLOOR PLAN**



99-01 QUEENS BLVD