



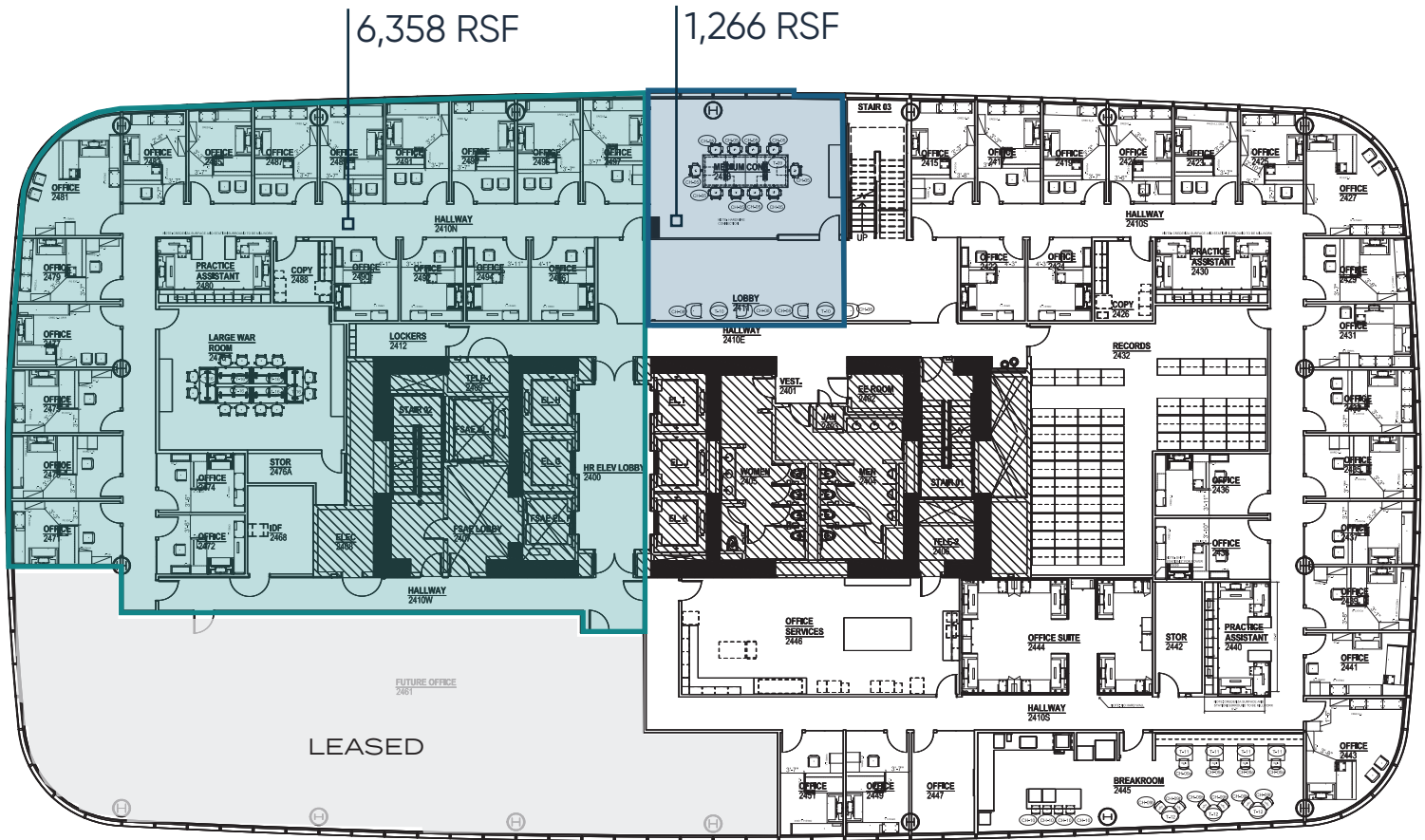
FOR SUBLEASE

95 STATE

95 SOUTH STATE STREET • SALT LAKE CITY, UT

CBRE

FLOOR PLAN



\$43.00/RSF Full Service Gross



2/1,000 parking ratio
at market rate



7,624 RSF Divisible - Flexible RSF



Includes furniture



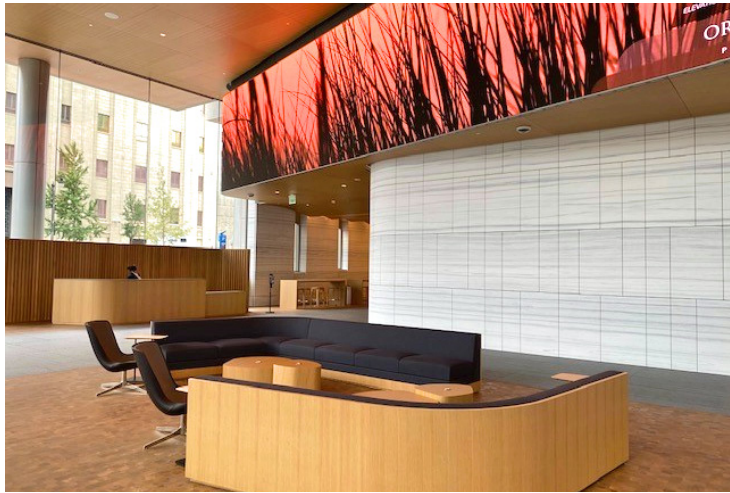
24th Floor of 95 State Building



Prime CBD location



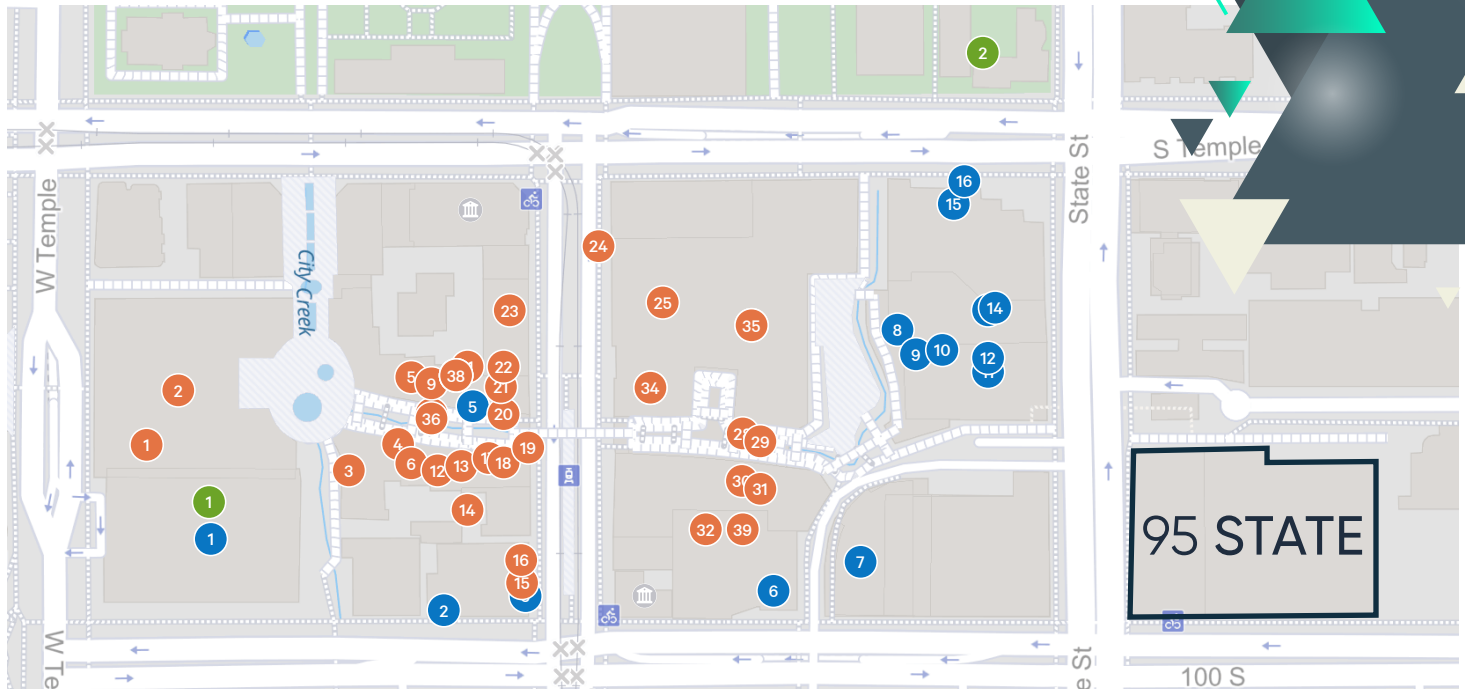
Sublease expires April 30, 2038



FOR SUBLEASE

95 STATE

95 SOUTH STATE STREET • SALT LAKE CITY, UT



Food				
1 Starbucks	10 Kneaders Bakery and Cafe	19 Restoration Hardware	28 H & M	37 ALDO
2 Subway	11 Chick-fil-A	10 Lululemon	29 Macy's	38 Bonobos
3 Starbucks	12 Jimmy John's	11 Gap	30 Tommy Hilfiger	39 Papyrus
4 Rocky Mountain Chocolate Factory	13 Costa Vida	12 Michael Kors	31 Lids	Hotel
5 Texas de Brazil	Retail	13 Zumiez	32 Macy's Backstage	1 Marriott Hotels and Resorts
6 Brio Tuscan Grille	1 Nordstrom	14 Sunglass Hut	33 West Elm	2 Lion House
7 The Cheesecake Factory	2 Brandy Melville	15 Coto Paxi	34 GNC	
8 Subway	3 Fabletics	16 Walgreens	35 Express	
9 Pizza Studio	4 American Eagle Outfitters		36 Forever 21	
10 McDonald's	5 J.Crew	17 Free People	37 Steve Madden	
11 Johnny Rockets	6 Madewell	18 Athleta	38 Loft	
12 Great Steak	7 Coach	19 White House Black Market	39 Journeys	
13 Kneaders Bakery and Cafe	8 Banana Republic	20 J.Jill	40 Sunglass Hut	
	9 Restoration Hardware	21 Anthropologie	41 Cotton On	
		22 Hugo Boss		

CONTACT ME

TAB CORNELISON

Senior Vice President

+1 801 869 8037

tab.cornelison@cbre.com

© 2022 CBRE, Inc. All rights reserved. This information has been obtained from sources believed reliable, but has not been verified for accuracy or completeness. You should conduct a careful, independent investigation of the property and verify all information. Any reliance on this information is solely at your own risk. CBRE and the CBRE logo are service marks of CBRE, Inc. All other marks displayed on this document are the property of their respective owners, and the use of such logos does not imply any affiliation with or endorsement of CBRE. Photos herein are the property of their respective owners. Use of these images without the express written consent of the owner is prohibited.

CBRE