

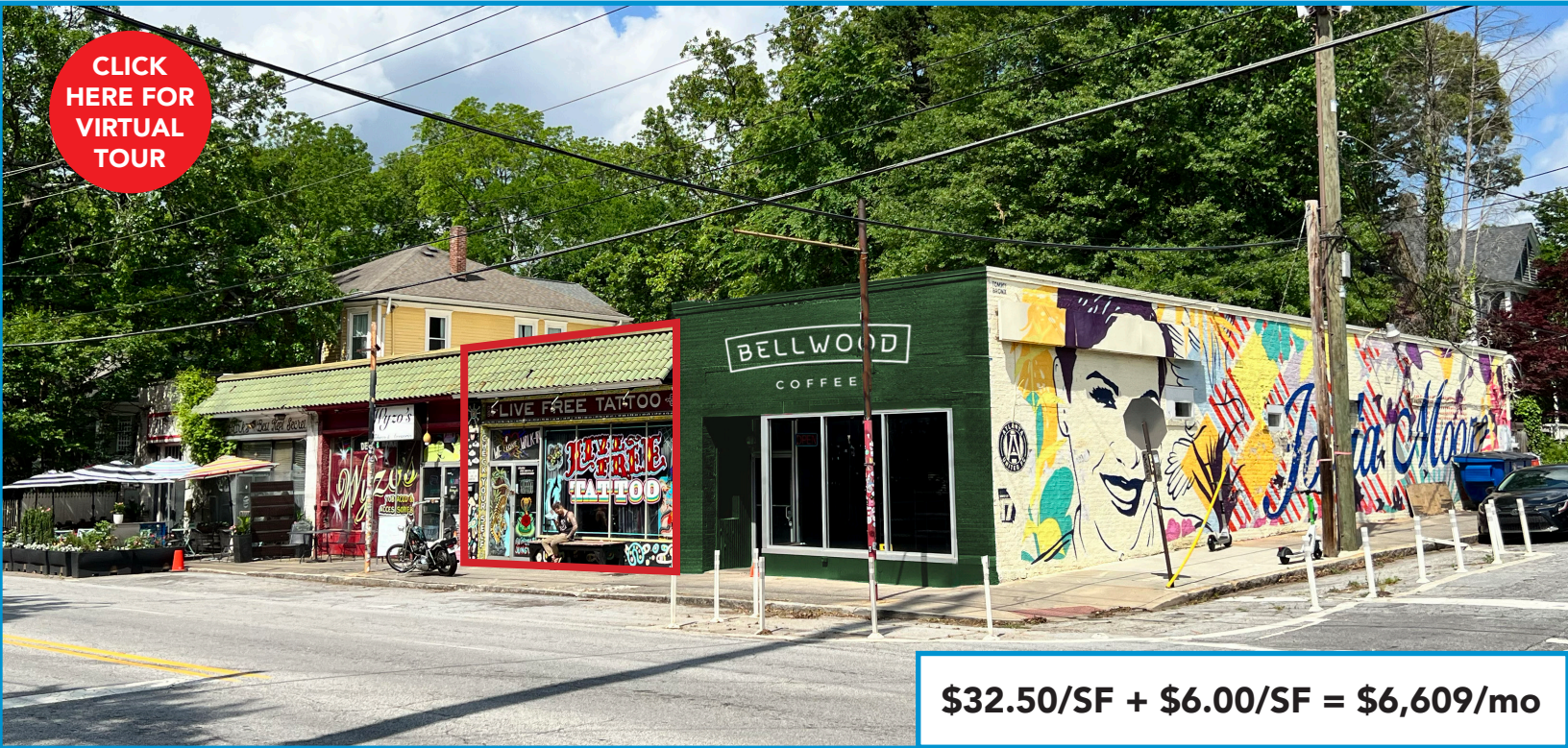
FOR LEASE



Grant Park Retail Space

566-B Boulevard SE, Atlanta, GA 30312

CLICK
HERE FOR
VIRTUAL
TOUR



\$32.50/SF + \$6.00/SF = \$6,609/mo

PROPERTY OVERVIEW

- » Fabulous corner location in highly desirable Grant Park neighborhood
- » Strong co-tenancy with beloved neighborhood institution Ziba's Restaurant & Wine Bar and latest outpost for Bellwood Coffee (coming soon)
- » Easy access to property not only from Grant Park, but also from many other intown enclaves such as Summerhill, O4W, Inman Park, Reynoldstown to name a few
- » Property enjoys excellent proximity to the Beltline, Grant Park Zoo, EAV, Glenwood Park and Cabbagetown



FOR MORE INFORMATION: Bart Lester 404-275-5822 | blester@oakrep.com

Information contained herein has been obtained from sources deemed reliable but we cannot guarantee its accuracy. No liability is assumed for errors or omissions.

FOR LEASE



Grant Park Retail Space

566-B Boulevard SE, Atlanta, GA 30312

AVAILABLE
2,060 SF

