



FOR LEASE

CAPTAIN COUCH BUILDING

24-32 NW 2ND AVENUE
PORTLAND, OR 97209

PLEASE CALL FOR RATES

JOSH BEAN, SIOR
josh@ecacre.com

BRIAN HANSON, MREF
brian@ecacre.com

TIM DUBOIS
tim@ecacre.com

503.205.0610



ETHOS COMMERCIAL ADVISORS LLC | 1111 NE FLANDERS ST, SUITE 201 | PORTLAND, OR 97232

These marketing materials do not constitute an offer to sell or lease, and do not constitute or contain promises, representations or warranties of any kind. The information in these marketing materials may contain approximations and images for illustration purposes. The owner, broker and their agents assume no risk or liability for inaccuracies, errors or omissions in these marketing materials. The terms and conditions of any transaction with respect to the property shall be contained exclusively in a written purchase and sale agreement or lease between the owner and the purchaser or tenant. Prospective purchasers or tenants should perform their own inspections of the property to verify its condition, permitted uses, and all other characteristics. | © 2024 Ethos Commercial Advisors LLC. All Rights Reserved. | 1.3.24

LICENSED IN OREGON AND WASHINGTON

The Captain Couch Building was originally constructed as the Phillip Hotel in 1904, boasting ground floor retail and saloon space. The building was extensively remodeled in 1977 and renamed the Captain Couch Building in honor of Captain John Couch.

The building currently houses tech and creative office tenants in the bustling Old Town District.

LOCATION

With the addition of tenants like University of Oregon, Oregon College of Oriental Medicine, and Ankrom Moisan, neighborhood amenities in Old Town have blossomed in the past few years and continue to grow. Captain Couch has numerous nearby food, drink, and entertainment options, multiple modes of public transportation, and convenient parking.

Accessibility is a key driver for successful businesses. Captain Couch is easily accessible by car and public transit. It is located adjacent to the Burnside Bridge and surrounded by twelve bus lines and four streetcar lines.

HIGHLIGHTS

- Exposed brick and wood finishes
- Historic architecture
- Landscaped courtyard
- Controlled access entry
- Public transit accessible – 12 bus and 4 streetcar lines
- Large windows and skylights in select suites

Historic architecture

Exposed brick
and wood finishes

Landscaped courtyard

Controlled access entry



Walk Score
98



Transit Score
93



Bike Score
99



1ST FLOOR – CAPTAIN COUCH

SUITE 100 | +/-341 RSF

- Historic street retail
- Shared access to kitchenette
- Basement storage negotiable

SUITE 101 | +/-936 RSF

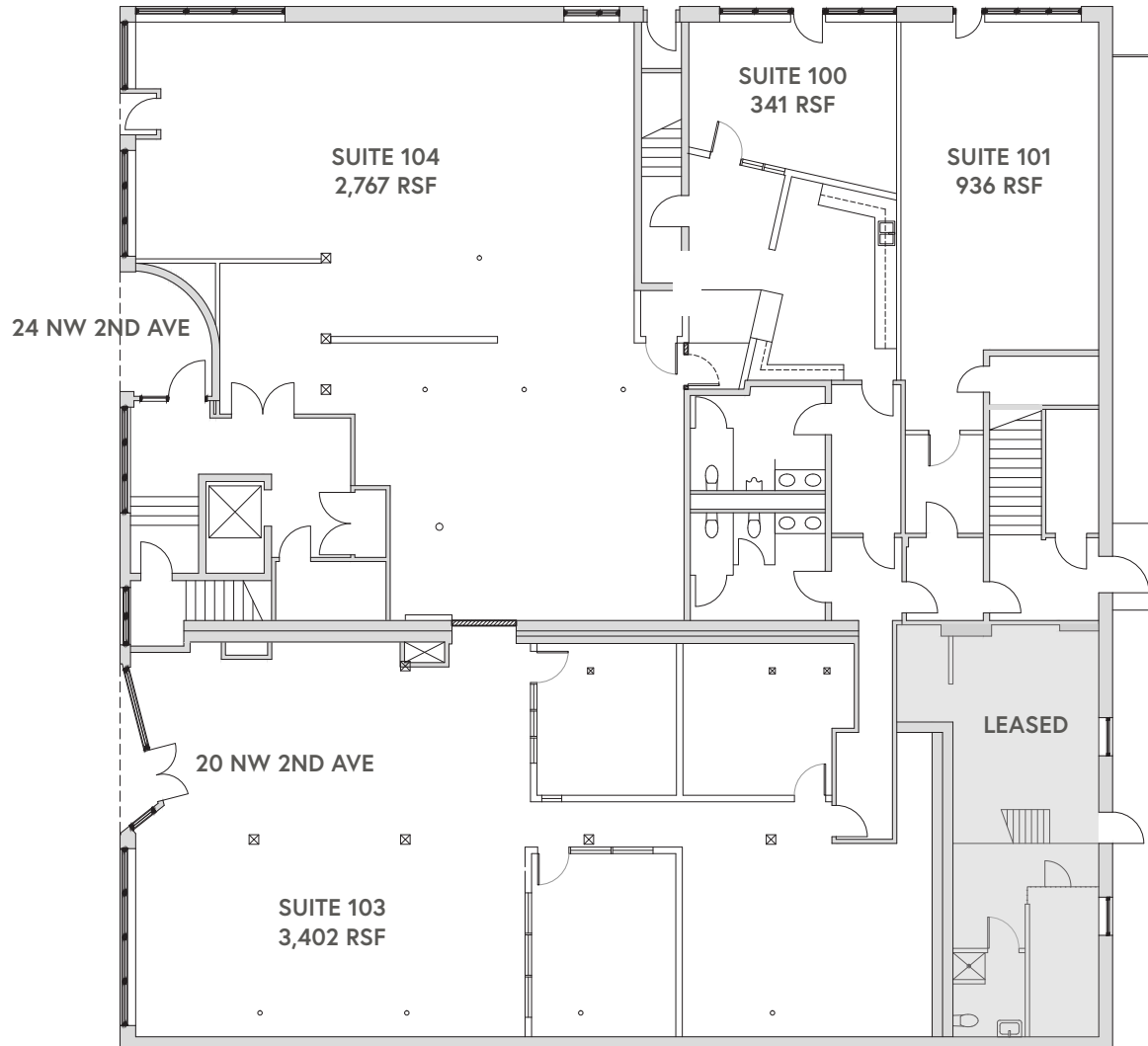
- Historic street retail
- Shared access to adjacent courtyard
- Two storage areas included

SUITE 103 | +/-3,402 RSF

- Turnkey suite
- Open plan with three conference / flex rooms
- Shared access to kitchenette

SUITE 104 | +/-2,767 RSF

- Corner suite with superior visibility
- Shared access to kitchenette
- Basement storage negotiable



FIRST FLOOR

THIS DRAWING IS NOT TO SCALE AND IS FOR ILLUSTRATIVE PURPOSES ONLY

2ND FLOOR – CAPTAIN COUCH

2ND FLOOR HIGHLIGHTS

- Historic features with exposed brick and beam
- Generous ceiling heights throughout (12')
- Hardwood floors

SUITE 200 | +/-3,479 RSF

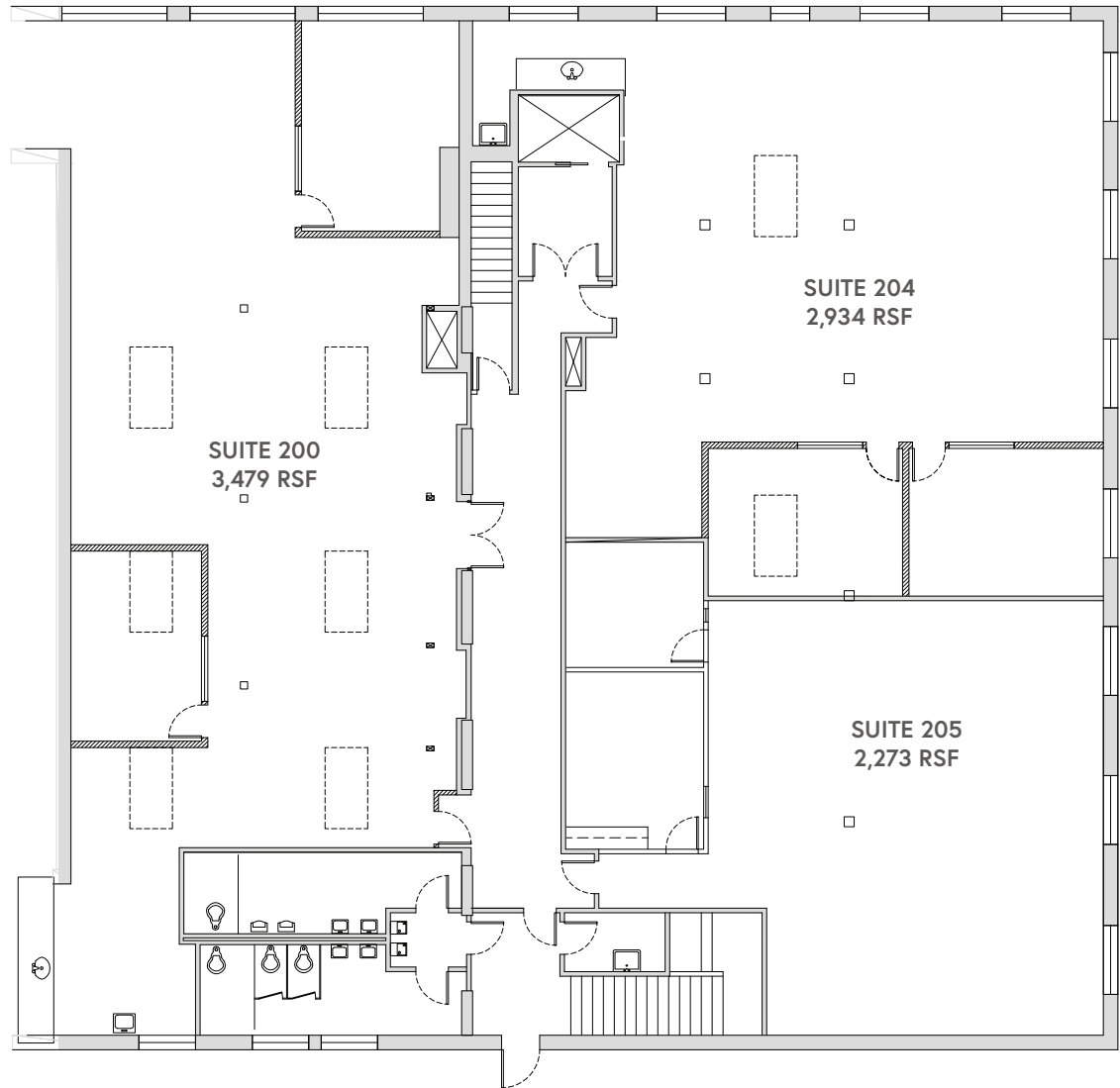
- Multiple skylights with great natural light
- Two private / flex offices
- Large kitchenette

SUITE 204 | +/-2,934 RSF

- Corner suite with great light
- Two private / flex offices
- Kitchenette
- Storage

SUITE 205 | +/-2,273 RSF

- Newly remodeled
- Private / flex office
- Conference room
- Kitchenette
- Large windows



SECOND FLOOR

THIS DRAWING IS NOT TO SCALE AND IS FOR ILLUSTRATIVE PURPOSES ONLY





● Restaurants

● Hotels

● Parking

MAX Lines

Bus Routes

Streetcar Lines

1. Floyd's Coffee

2. Angelina's Greek Gyros

3. Old Town Pizza & Brewing

4. Kasbah Moroccan Cafe

5. Chen's Good Taste

6. Deadstock Coffee Roasters

7. Voodoo Donut

8. Dan & Louis Oyster Bar

9. Kell's Irish Restaurant & Pub

10. Pine Street Market

1. Embassy Suites by Hilton

2. Hi-Lo Hotel

3. Kimpton Hotel Monaco

4. The Bidwell Marriott

5. Kimpton Hotel Vintage

6. Hotel Lucia

7. The Benson

8. Courtyard by Marriott

9. The Hoxton

10. The Society Hotel