

NOW LEASING

VILLAGE
AT 11 WEST



27100 W. ELEVEN MILE ROAD - SOUTHFIELD, MICHIGAN

15,474 – 46,422 SQUARE FEET AVAILABLE

Exciting redevelopment is underway, bringing a fresh suite of modern amenities for office tenants — including a fitness center, putting green, golf simulator, library, movie theater, event room, podcast room, pet spa, and game room. Enjoy aggressive lease rates and the convenience of 1,900 parking spaces, including covered options, all within a 575,000 square foot campus.



Redevelopment
starting soon



Access to new
amenities



Covered parking



Direct access to
I-696 & US-24

For more information, contact:

DAVE MILLER

(248) 948 4183

dmiller@signatureassociates.com

DAN MORROW

(248) 799 3144

dmorrow@signatureassociates.com



**SIGNATURE
ASSOCIATES**

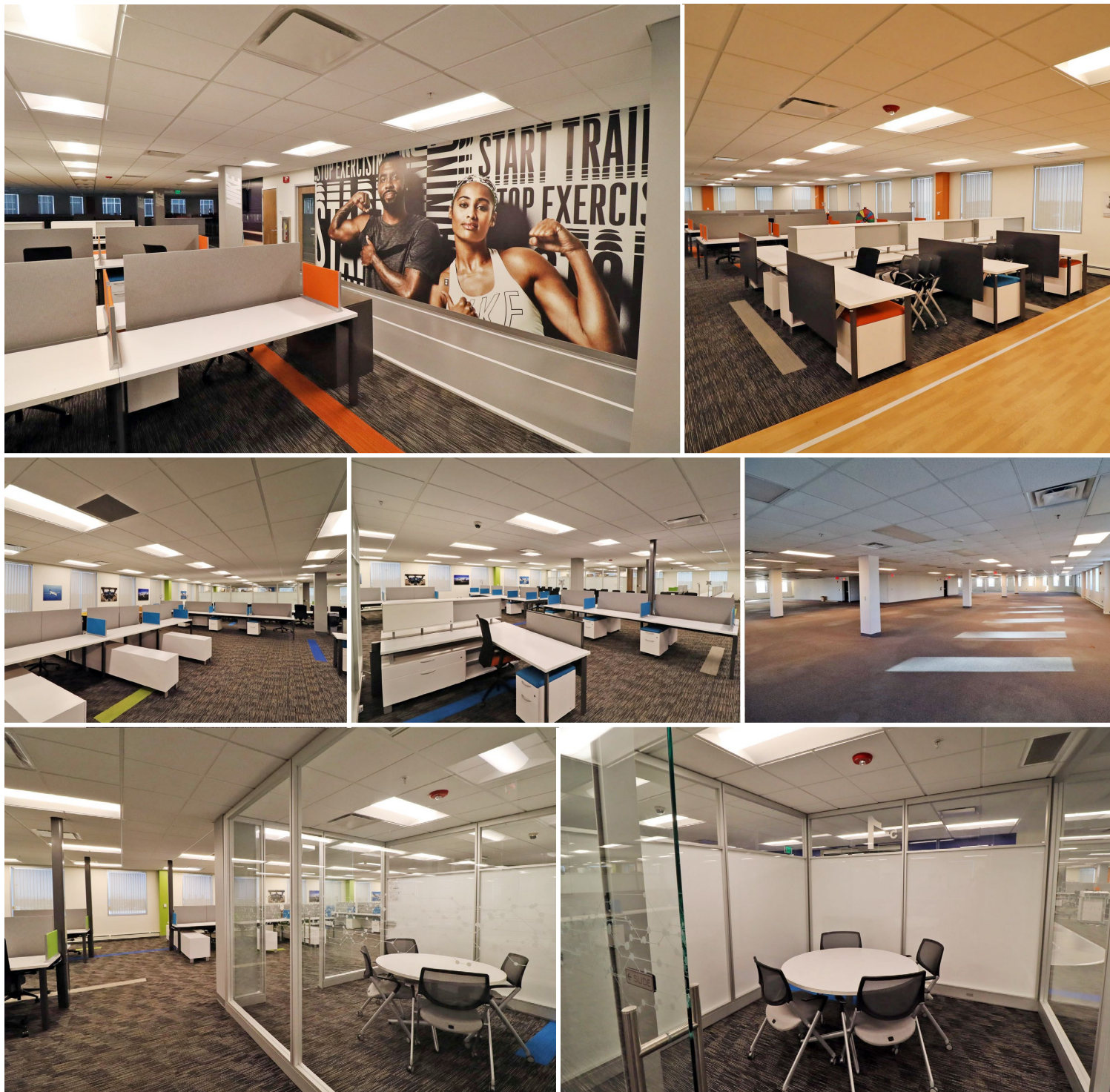
KNOW SIGNATURE | KNOW RESULTS

One Towne Square, Suite 1200, Southfield, Michigan 48076 | www.signatureassociates.com

Information is subject to verification and no liability for errors or omissions is assumed. Price is subject to change and listing withdrawal.

INTERIOR PHOTOS

27100 W. ELEVEN MILE ROAD - SOUTHFIELD, MICHIGAN



For more information, contact:

DAVE MILLER

(248) 948 4183

dmiller@signatureassociates.com

DAN MORROW

(248) 799 3144

dmorrow@signatureassociates.com



**SIGNATURE
ASSOCIATES**

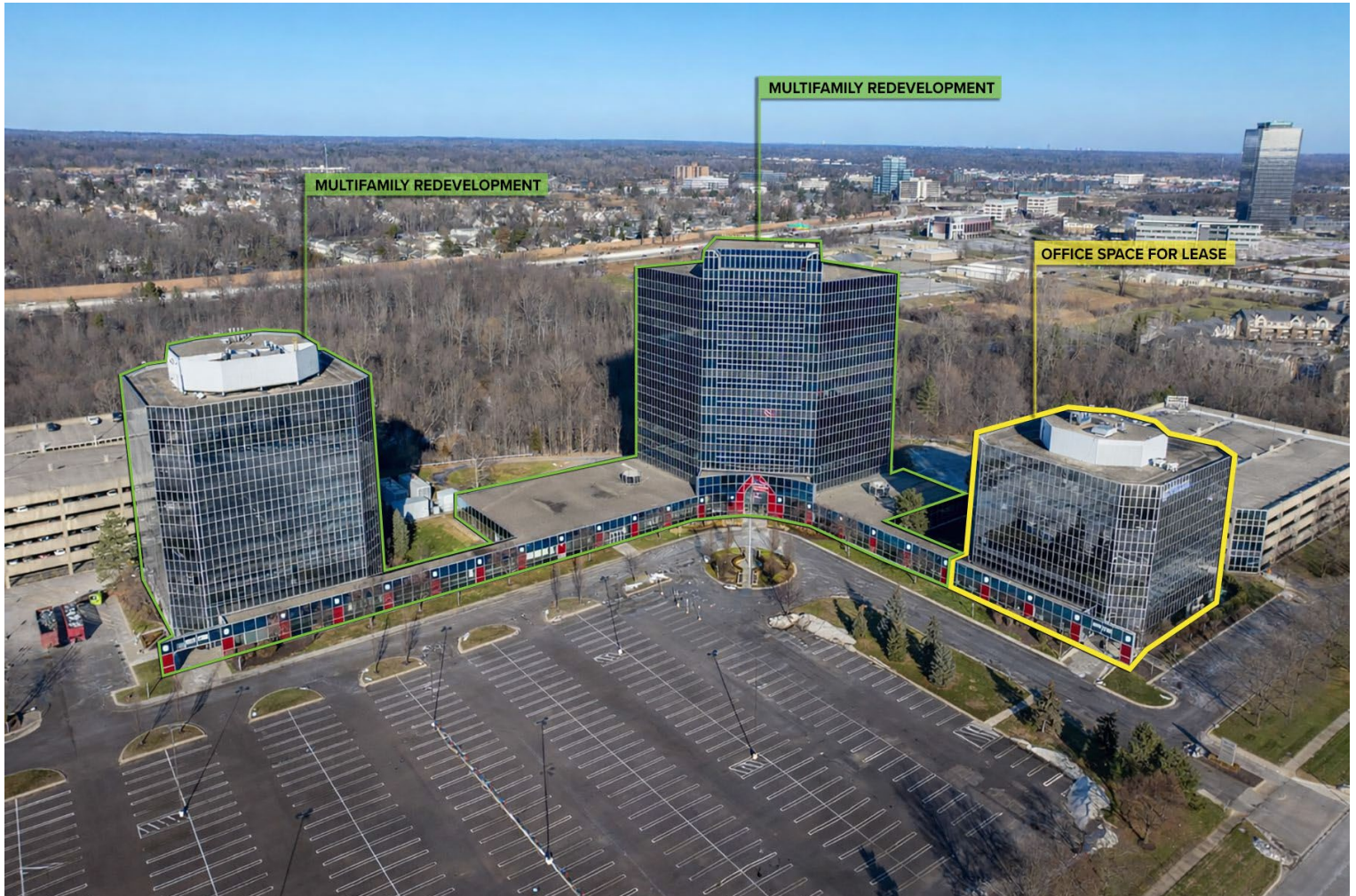
KNOW SIGNATURE | KNOW RESULTS

One Towne Square, Suite 1200, Southfield, Michigan 48076 | www.signatureassociates.com

Information is subject to verification and no liability for errors or omissions is assumed. Price is subject to change and listing withdrawal.

SITE LOCATION

27100 W. ELEVEN MILE ROAD - SOUTHFIELD, MICHIGAN



For more information, contact:

DAVE MILLER

(248) 948 4183

dmiller@signatureassociates.com

DAN MORROW

(248) 799 3144

dmorrow@signatureassociates.com



**SIGNATURE
ASSOCIATES**

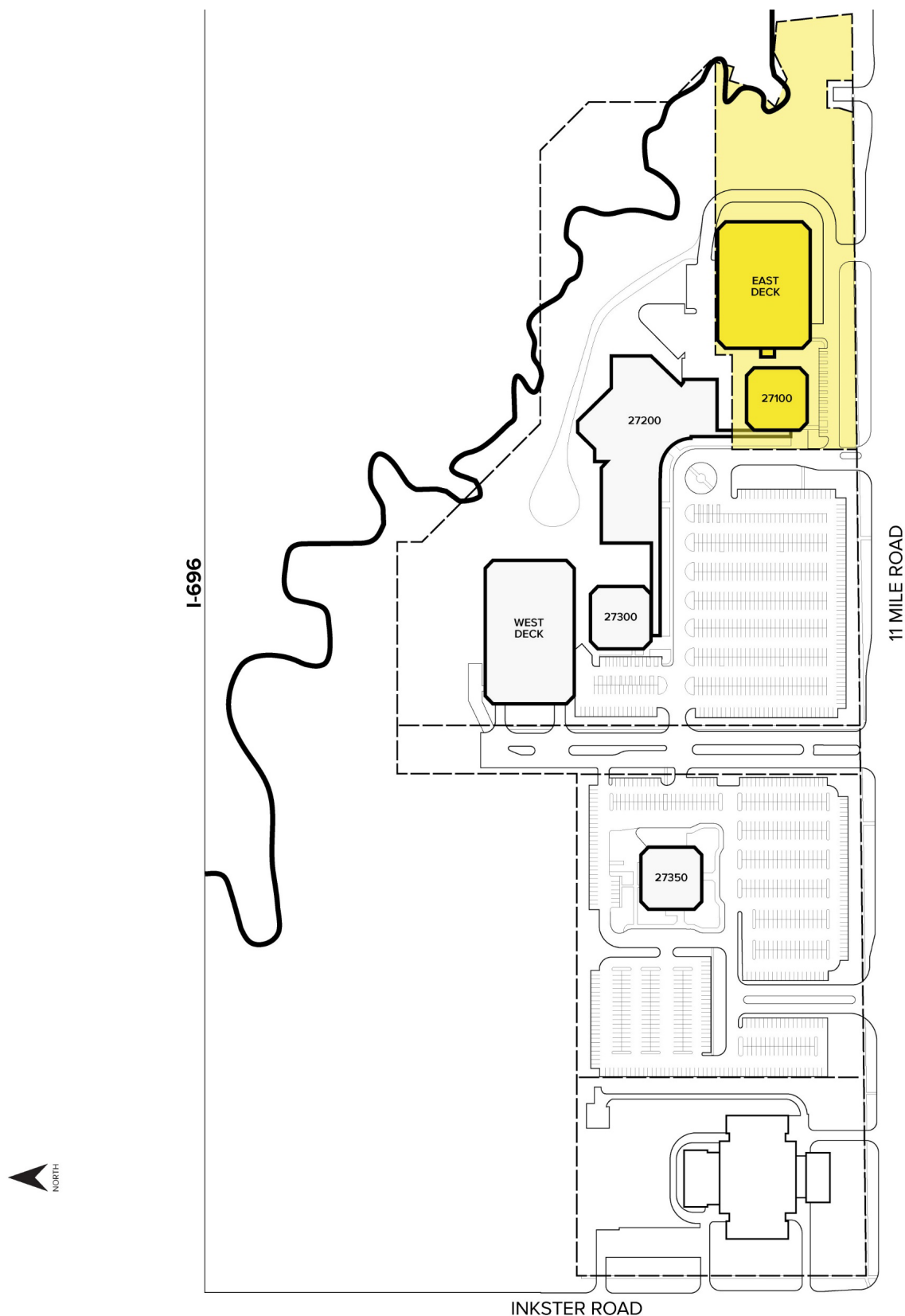
KNOW SIGNATURE | KNOW RESULTS

One Towne Square, Suite 1200, Southfield, Michigan 48076 | www.signatureassociates.com

Information is subject to verification and no liability for errors or omissions is assumed. Price is subject to change and listing withdrawal.

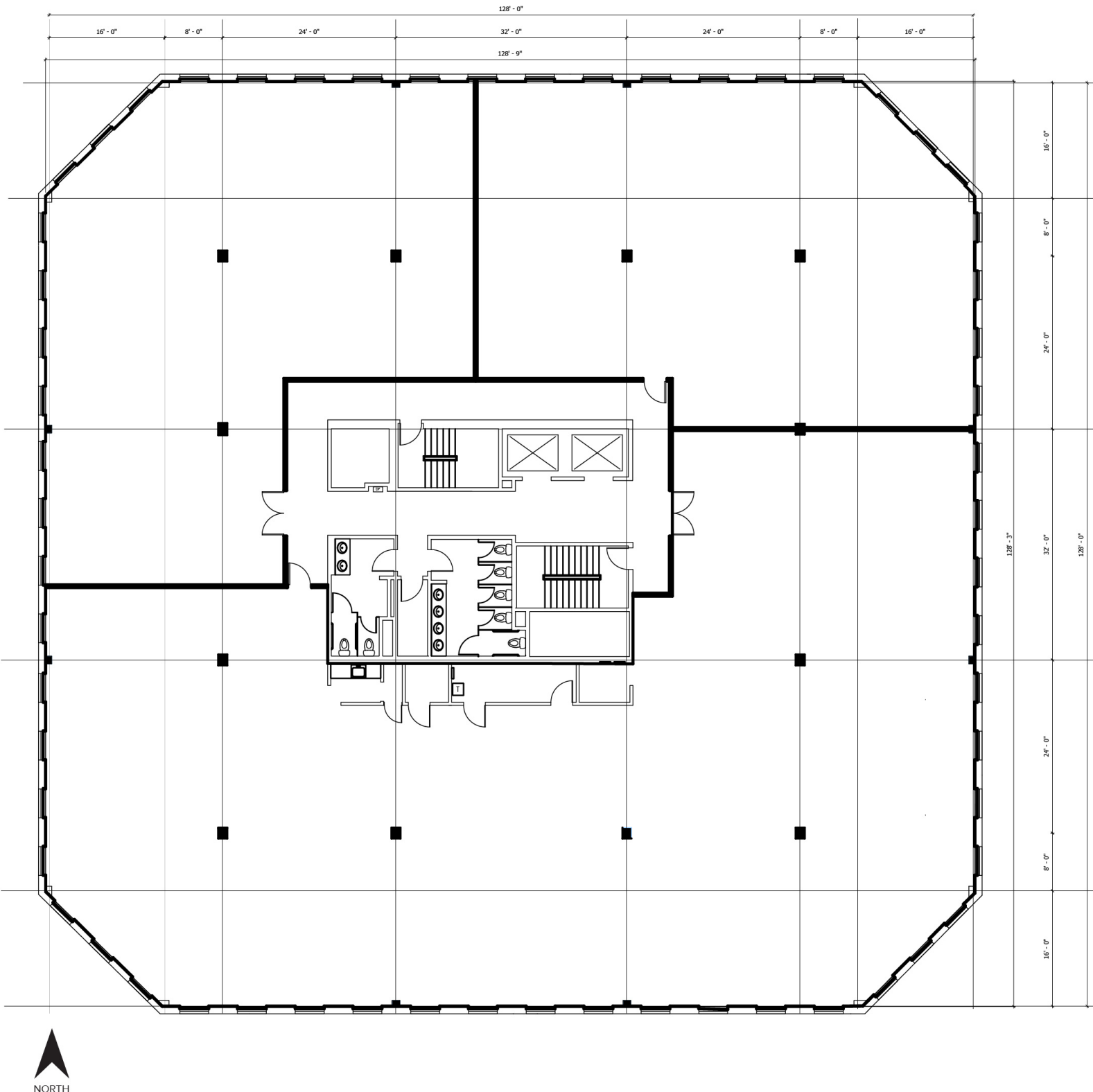
SITE PLAN

27100 W. ELEVEN MILE ROAD - SOUTHFIELD, MICHIGAN



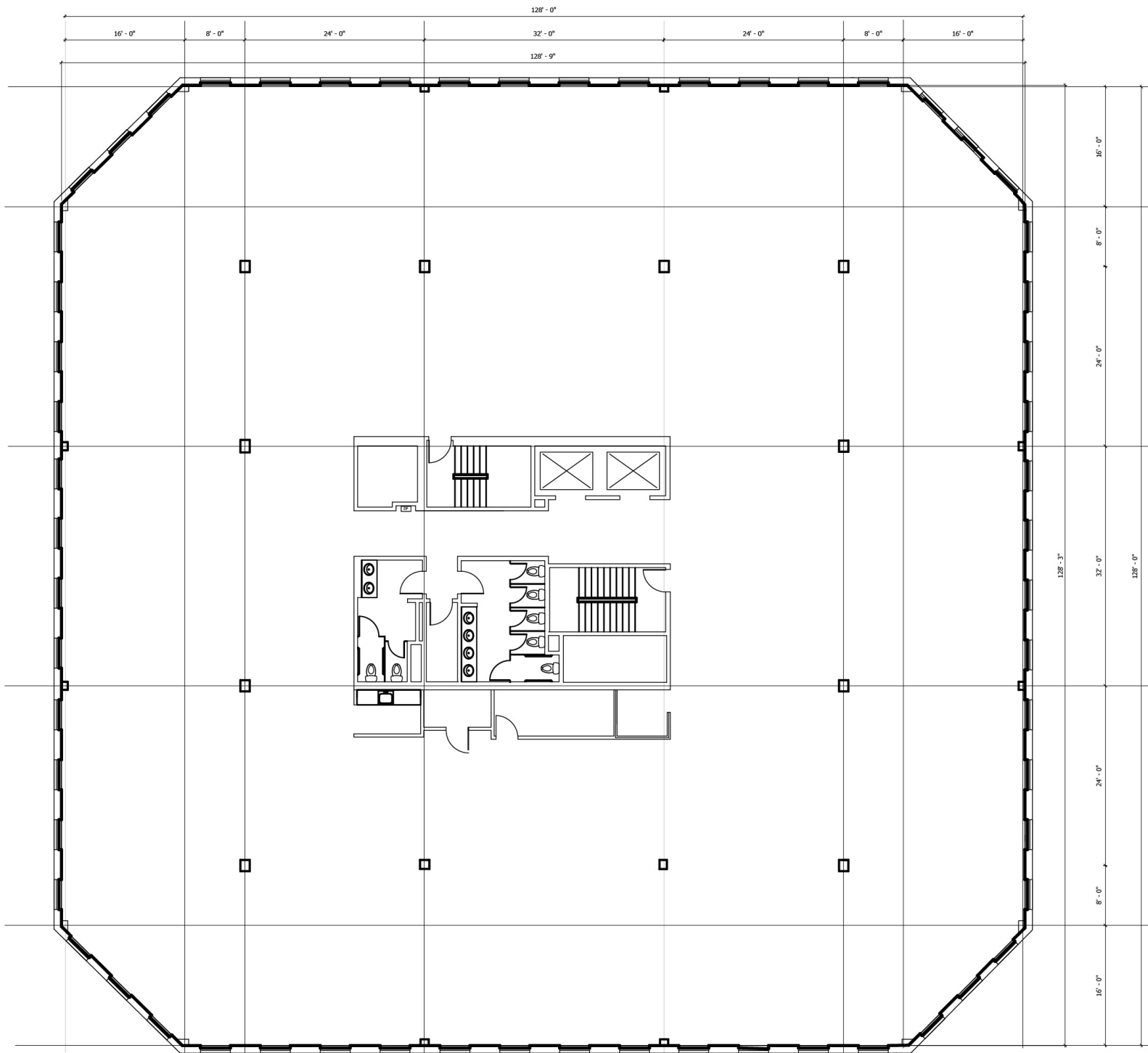
FLOOR PLAN - SUITE 200

27100 W. ELEVEN MILE ROAD - SOUTHFIELD, MICHIGAN



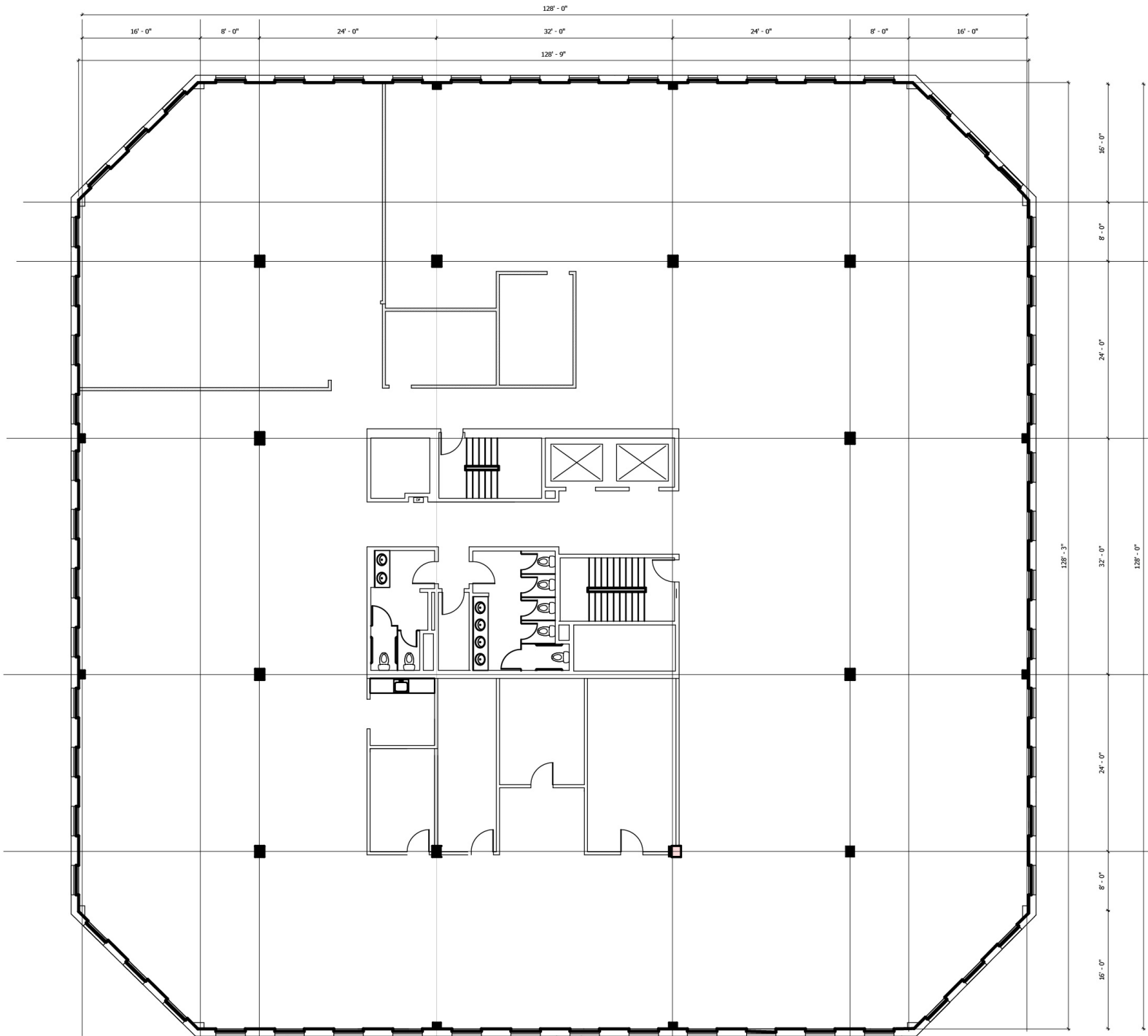
FLOOR PLAN - SUITE 300

27100 W. ELEVEN MILE ROAD - SOUTHFIELD, MICHIGAN



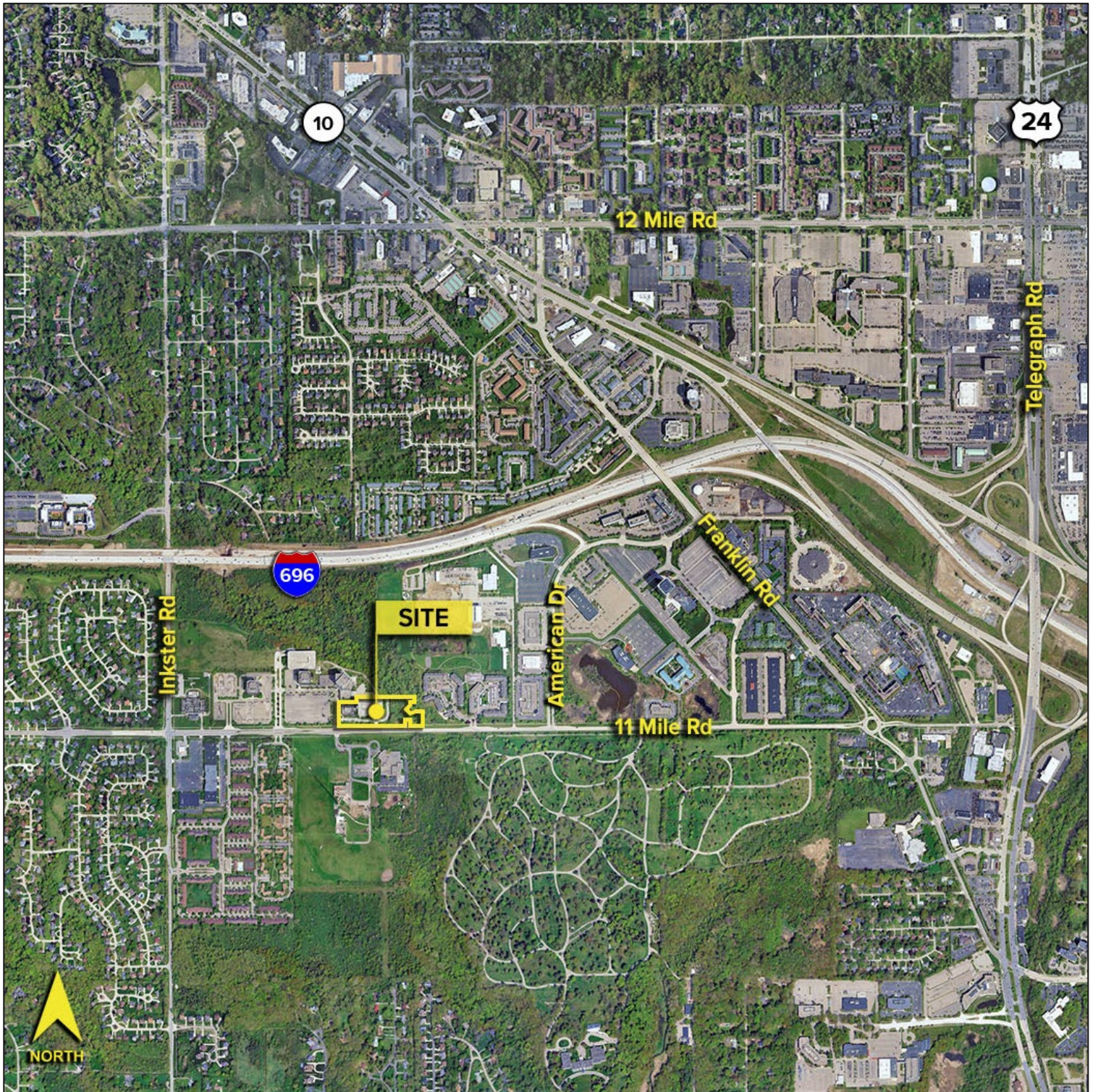
FLOOR PLAN - SUITE 400

27100 W. ELEVEN MILE ROAD - SOUTHFIELD, MICHIGAN



AERIAL

27100 W. ELEVEN MILE ROAD - SOUTHFIELD, MICHIGAN



For more information, contact:

DAVE MILLER

(248) 948 4183

dmiller@signatureassociates.com

DAN MORROW

(248) 799 3144

dmorrow@signatureassociates.com



**SIGNATURE
ASSOCIATES**

KNOW SIGNATURE | KNOW RESULTS

One Towne Square, Suite 1200, Southfield, Michigan 48076 | www.signatureassociates.com

Information is subject to verification and no liability for errors or omissions is assumed. Price is subject to change and listing withdrawal.