



19,200 SF AVAILABLE

4301 Pleasantdale Road - Suite G - I
Doraville, Georgia 30340

OWNED BY:

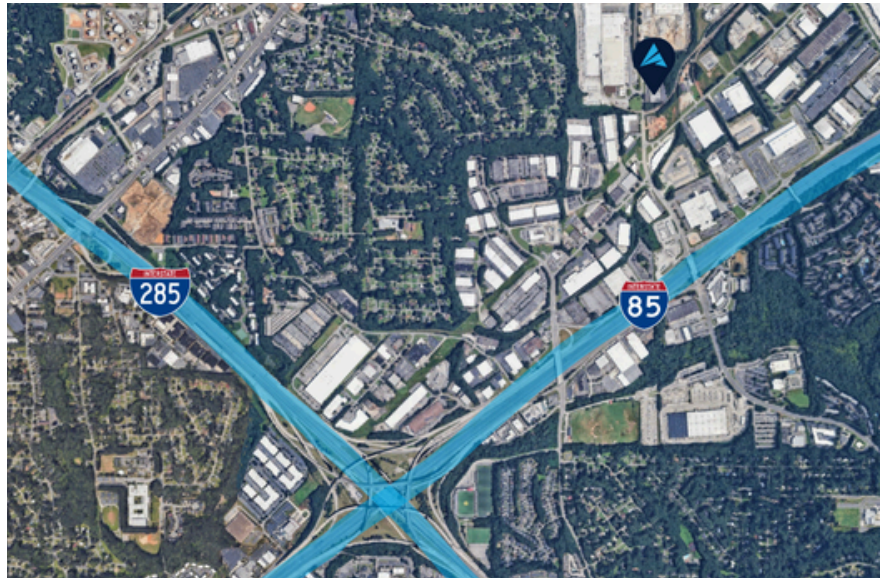


FOR LEASE



PROPERTY INFORMATION

- Total Size:** 19,200 SF
- Office:** 6,382 SF
- Warehouse:** 12,818 SF
- Loading:** 8 Dock High Doors
- Clear Height:** 18'
- Available:** Immediately



APEX INDUSTRIAL
REAL ESTATE ADVISORS

3500 Lenox Rd NE, Suite 1275 | Atlanta, GA 30326 | apexindustrialre.com

For more information,
please contact:

TREY WEGHORST

Office: (770) 264-9420
Cell: (404) 276-9314
tweghorst@apexindustrialre.com

BRYCE MCCAIN

Office: (404) 595-1552
Cell: (770) 845-3559
bmccain@apexindustrialre.com



19,200 SF AVAILABLE

4301 Pleasantdale Road - Suite G - I
Doraville, Georgia 30340

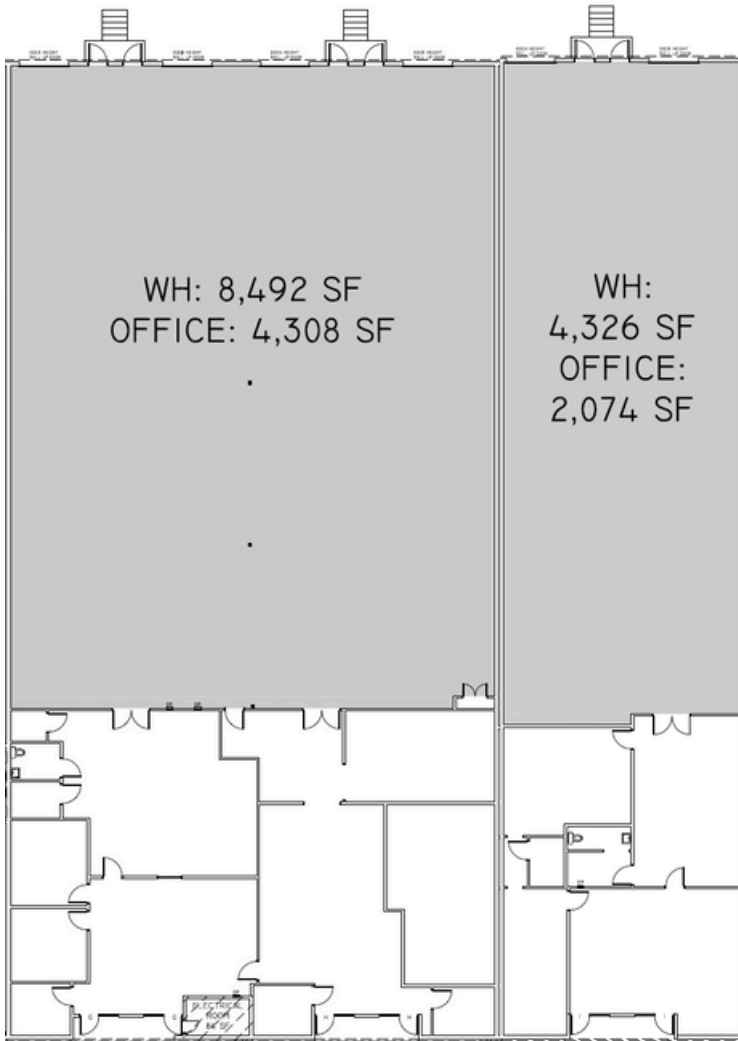
OWNED BY:



FLOOR PLAN



KEYPLAN



APEX INDUSTRIAL
REAL ESTATE ADVISORS

3500 Lenox Rd NE, Suite 1275 | Atlanta, GA 30326 | apexindustrialre.com

For more information,
please contact:

TREY WEGHORST

Office: (770) 264-9420
Cell: (404) 276-9314

tweghorst@apexindustrialre.com

BRYCE MCCAIN

Office: (404) 595-1552
Cell: (770) 845-3559

bmccain@apexindustrialre.com