

750

-SURVEY-

OF 30.000 ACRES
LOCATED IN
LAND LOT 27 OF THE
11th LAND DISTRICT
LOWNDES COUNTY, GEORGIA

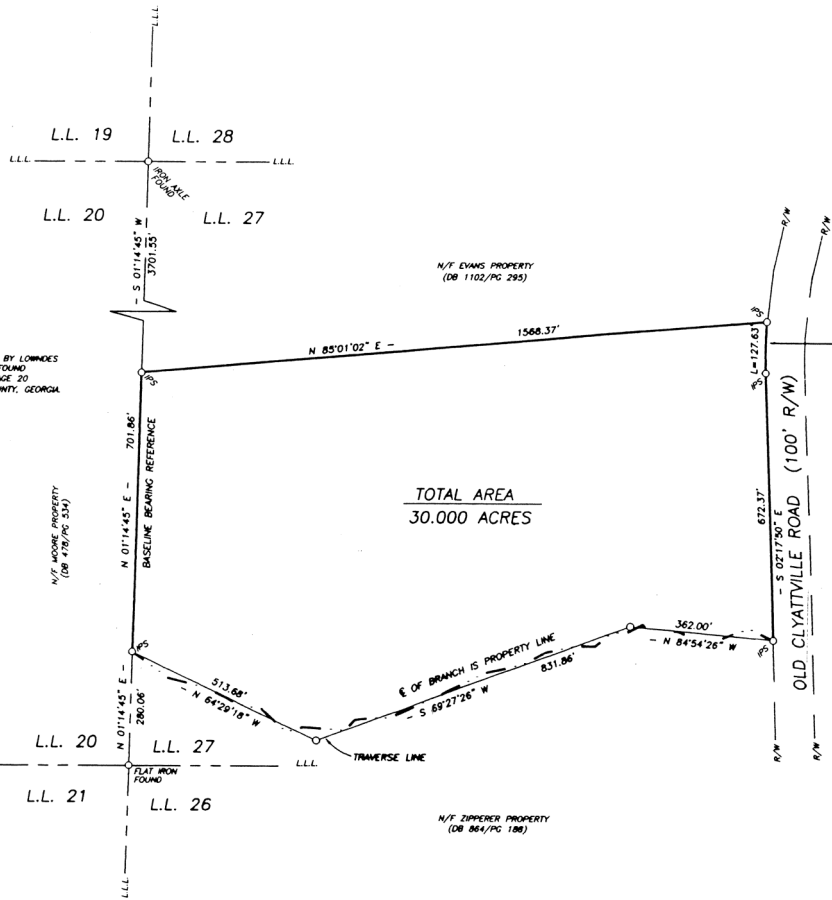
THE PLATTED PROPERTY IS A DIVISION OF THE PROPERTY DESCRIBED BY LOWNDES COUNTY TAX ASSESSORS AS TAX MAP NO. PARCEL 19 AND CAN BE FOUND DESCRIBED IN DEED BOOK 1102, PAGE 295, AND PLAT BOOK 30, PAGE 20 OF RECORD IN THE OFFICE OF THE CLERK OF COURT, LOWNDES COUNTY, GEORGIA.

COMPUTED AREA TO TRAVERSE LINE = 30.0079 ACRES
AREA BETWEEN TRAVERSE LINE & E. OF BRANCH = -0.0079 ACRE
NET TOTAL AREA = 30.000 ACRES

I HEREBY CERTIFY THAT ALL MEASUREMENTS ARE CORRECT AND WERE PREPARED FROM AN ACTUAL FIELD SURVEY UNDER MY SUPERVISION. THE FIELD DATA UPON WHICH THIS PLAT IS BASED HAS BEEN OBTAINED FROM AN OPEN LOOP TRAVERSE AND NO ADJUSTMENT HAS BEEN PERFORMED. THIS PLAT HAS BEEN CALCULATED FOR CLOSURE AND IS ACCURATE WITHIN 1 FOOT IN 3,380,681 FEET.

THIS PROPERTY IS IN ZONE "C" AND IS NOT SUBJECT TO AN SPECIAL FLOOD HAZARD. REFER TO F.E.M.A. COMMUNITY MAP PANEL NO. 130489 0005, DATED JUNE 1, 1982.

Dean B. DeVane 4/17/98
DEAN B. DEVANE GA. R.L.S. #2820



TOTAL AREA
30.000 ACRES



REFERENCE
THESE BEARINGS HEREON HAVE BEEN CALCULATED FROM AN ACTUAL FIELD SURVEY AND IS BASED UPON A PLAT FOUND IN PLAT BOOK 30, PAGE 20, OF RECORD, LOWNDES CO., GA.

CURVE DATA

R = 1225.91'
T = 63.87'
L = 127.63'
CH = 127.57'
CH BRG = S 00°41'08\" W

EQUIPMENT USED:
TOPCON GTS 304 T.S.
HP 48 SX & TDS 48
DATA COLLECTOR SYS.
STEEL TAPE, COMPASS

GENERAL LEGEND

E	CENTERLINE
HP	IRON REBAR SET
-	NOT TO SCALE
N/F	NOW OR FORMERLY
L.L.L.	LAND LOT LINE
O	NON MONUMENTED

GEORGIA, LOWNDES COUNTY
RECORDED
This 1 day July 1998
Plat Cabinet # 28
Sara L. Crow
Clerk Superior Court

EVANS-SA-CCG
98057-LWV

DE VANE ENGINEERS & SURVEYORS, INC.
202 W. GORDON ST. SUITE "E" VALDOSTA, GA.
TELEPHONE (912) 253-8080

SURVEY FOR:
SANDRA D. EVANS
17 JUNE 1998

200 0 100 200 300 400
GRAPHIC SCALE: 1 INCH = 200 FEET

