

RETAIL SPACE FOR LEASE: SUMMIT AT THE MALL

3755 Bloomfield Road
Macon, GA 31206



Summary

Area Info

Site Plans

Floor Plans

Aerial

Agent Info

LEASE NOW: LIMITED TIME PRICE REDUCTION



CONTACT

Lan Heath

478-746-9421 Office
478-731-5899 Cell
lheath@fickling.com

Jenny Howell (Fluent in Spanish)

478-746-9421 Office
786-449-8523 Cell
jenny@fickling.com



577 Mulberry St, Suite 1100
Macon, GA 31201
478.746.9421 Office
<https://commercial.fickling.com>

This information is from resources deemed to be reliable and is subject to change without notice. No warranties or guarantees for accuracy are made by Fickling and Company.

RETAIL SPACE FOR LEASE: SUMMIT AT THE MALL
3755 Bloomfield Road
Macon, GA 31206



Summary Area Info Site Plans Floor Plans Aerial Agent Info

PROPERTY INFORMATION

BUILDING

Property Address: 3755 Bloomfield Road
Macon, GA 31206

County: Bibb

Total Size: 84,551 SF

Available: 1,600 SF - 28,300 SF

Utilities: All Available

Parking: Paved, on site

Traffic Count: Bloomfield Rd: 9,940 VPD
Mercer University Dr: 26,600 VPD
Eisenhower Pkwy: 23,963 VPD

SITE

Site Size: 10.33 Acres

Parcel ID: M084-0266, M084-0265, M084-0207,
M084-0015, M084-0222

Zoning: PDC

Demographics 2024	1 Mile	3 Miles	5 Miles
Population	5,492	48,703	90,381
Avg HH Income	\$37,144	\$53,007	\$73,779
Median Age	32.1	32.9	35.1

~~LEASE RATE: \$12.00/PSF~~

REDUCED RATE*: \$10.00/PSF MG Inline Space

*Terms & Conditions Apply

CONTACT

Lan Heath
478-746-9421 Office
478-731-5899 Cell
lheath@fickling.com

Jenny Howell (Fluent in Spanish)
478-746-9421 Office
786-449-8523 Cell
jenny@fickling.com



577 Mulberry St, Suite 1100
Macon, GA 31201
478.746.9421 Office
<https://commercial.fickling.com>

RETAIL SPACE FOR LEASE: SUMMIT AT THE MALL

3755 Bloomfield Road
Macon, GA 31206



Summary

Area Info

Site Plans

Floor Plans

Aerial

Agent Info

SHOPPING CENTER

Summit at the Mall offers highly visible retail spaces in a prime high-traffic location, ranging from 1,600 – 28,300 SF, with competitive lease rates. The tenant roster includes Truist Bank, Foot Locker, Rent-A-Center, Pizza Hut, and No Name Chicken.

LOCATION

Located directly behind Macon Mall and steps away from the new 12,000-seat Atrium Health Amphitheatre, which has hosted sold-out concerts since opening, this site benefits from exceptional visibility and year-round activity. The Atrium Health Amphitheater is part of a \$150 million revitalization initiative that also includes the world's largest indoor pickleball facility, which has already successfully hosted multiple tournaments—bringing a significant boost to daytime population

and visitor traffic. [Atrium Health Amphitheatre](#)

As part of the same redevelopment effort, Macon-Bibb County has relocated numerous government offices to the Macon Mall, bringing nearly 900 employees on site and further strengthening activity, employment, and economic momentum in the area.



CONTACT

Lan Heath
478-746-9421 Office
478-731-5899 Cell
lheath@fickling.com

Jenny Howell (Fluent in Spanish)
478-746-9421 Office
786-449-8523 Cell
jenny@fickling.com



577 Mulberry St, Suite 1100
Macon, GA 31201
478.746.9421 Office
<https://commercial.fickling.com>

RETAIL SPACE FOR LEASE: SUMMIT AT THE MALL

3755 Bloomfield Road
Macon, GA 31206



Summary

Area Info

Site Plans

Floor Plans

Aerial

Agent Info

Site Plan



AVAILABILITY - INLINE SPACE

Suite	SF	Monthly Modified Gross Rent
3	2,000	\$1,670
9	2,500	\$2,080
12A	±1,600	\$1,350
13A	2,538	\$2,115
14A	1,204	\$1,004

AVAILABILITY - ANCHOR SPACE

Suite	SF	Monthly Modified Gross Rent
1	28,300	\$16,500
16	10,350	\$6,000

CONTACT

Lan Heath
478-746-9421 Office
478-731-5899 Cell
lheath@fickling.com

Jenny Howell (Fluent in Spanish)
478-746-9421 Office
786-449-8523 Cell
jenny@fickling.com



577 Mulberry St, Suite 1100
Macon, GA 31201
478.746.9421 Office
<https://commercial.fickling.com>

RETAIL SPACE FOR LEASE: SUMMIT AT THE MALL

3755 Bloomfield Road
Macon, GA 31206



Summary

Area Info

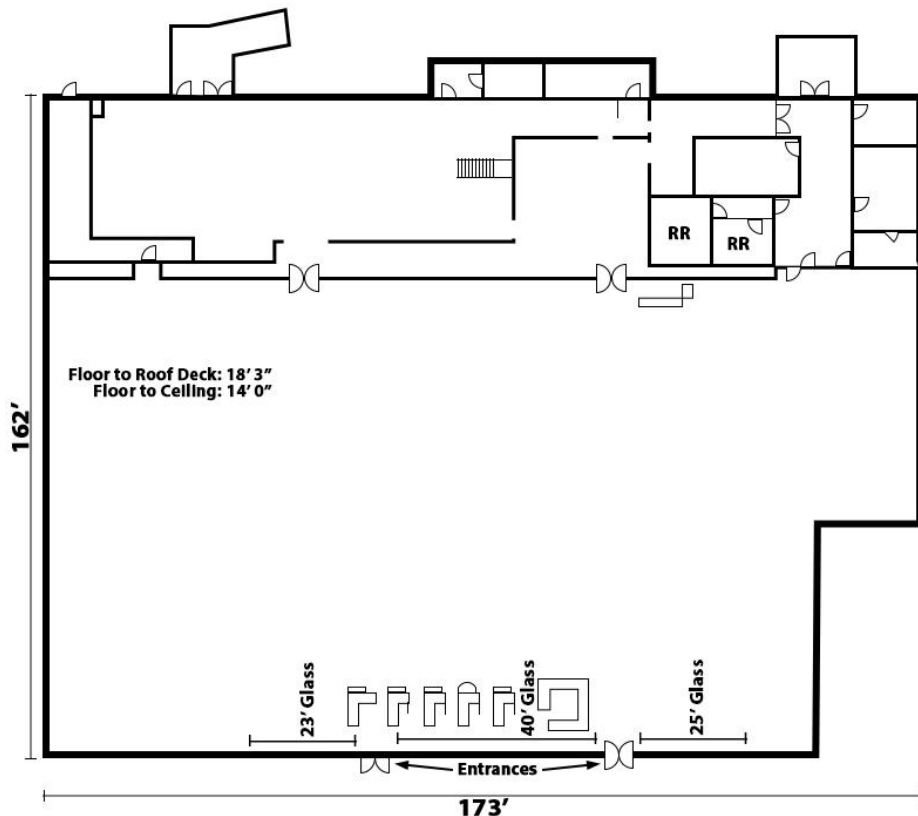
Site Plans

Floor Plans

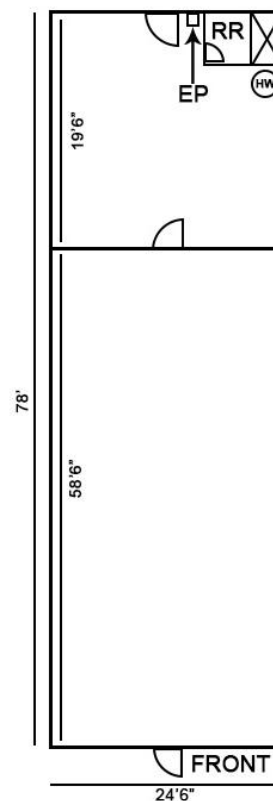
Aerial

Agent Info

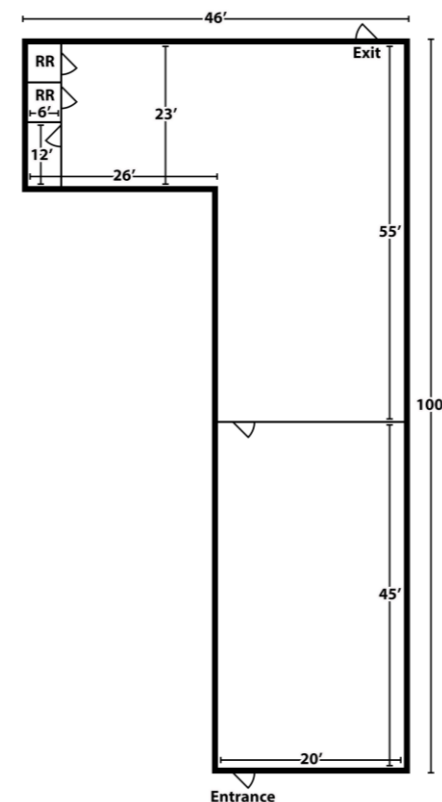
Suite 1



Suite 3



Suite 9



*All measurements and all calculations of area are approximate and not guaranteed

CONTACT

Lan Heath
478-746-9421 Office
478-731-5899 Cell
lheath@fickling.com

Jenny Howell (Fluent in Spanish)
478-746-9421 Office
786-449-8523 Cell
jenny@fickling.com



577 Mulberry St, Suite 1100
Macon, GA 31201
478.746.9421 Office
<https://commercial.fickling.com>

RETAIL SPACE FOR LEASE: SUMMIT AT THE MALL

3755 Bloomfield Road
Macon, GA 31206



Summary

Area Info

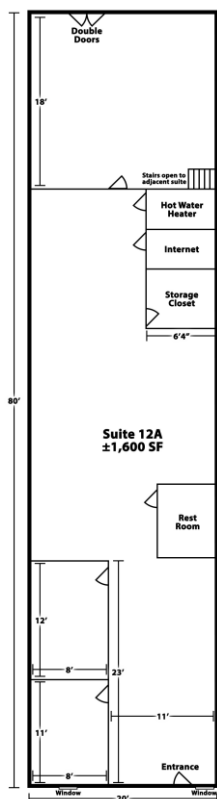
Site Plans

Floor Plans

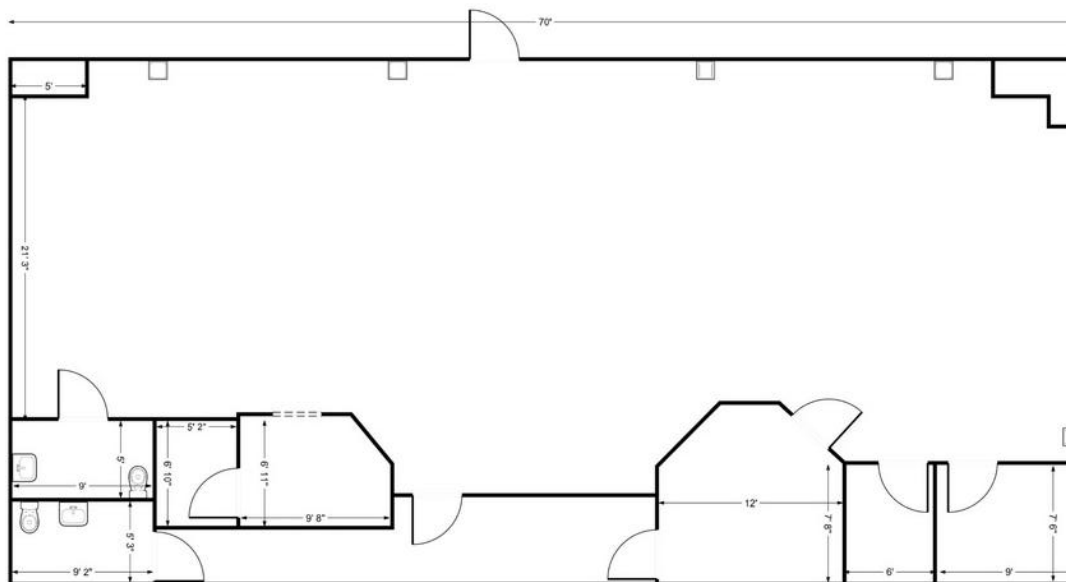
Aerial

Agent Info

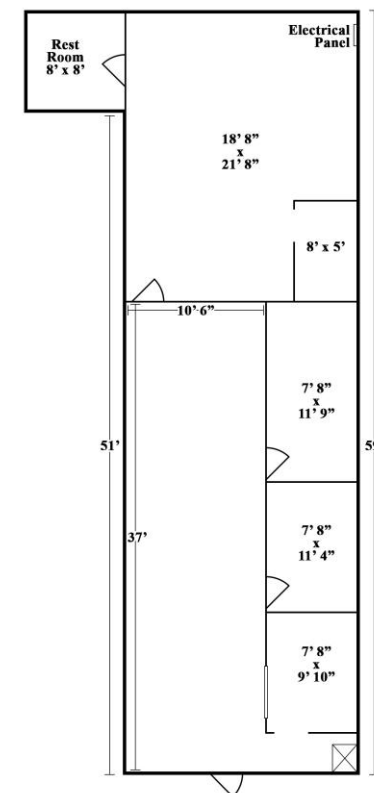
Suite 12A



Suite 13A



Suite 14A



*All measurements and all calculations of area are approximate and not guaranteed

CONTACT

Lan Heath
478-746-9421 Office
478-731-5899 Cell
lheath@fickling.com

Jenny Howell (Fluent in Spanish)
478-746-9421 Office
786-449-8523 Cell
jenny@fickling.com



577 Mulberry St, Suite 1100
Macon, GA 31201
478.746.9421 Office
<https://commercial.fickling.com>

RETAIL SPACE FOR LEASE: SUMMIT AT THE MALL

3755 Bloomfield Road
Macon, GA 31206



Summary

Area Info

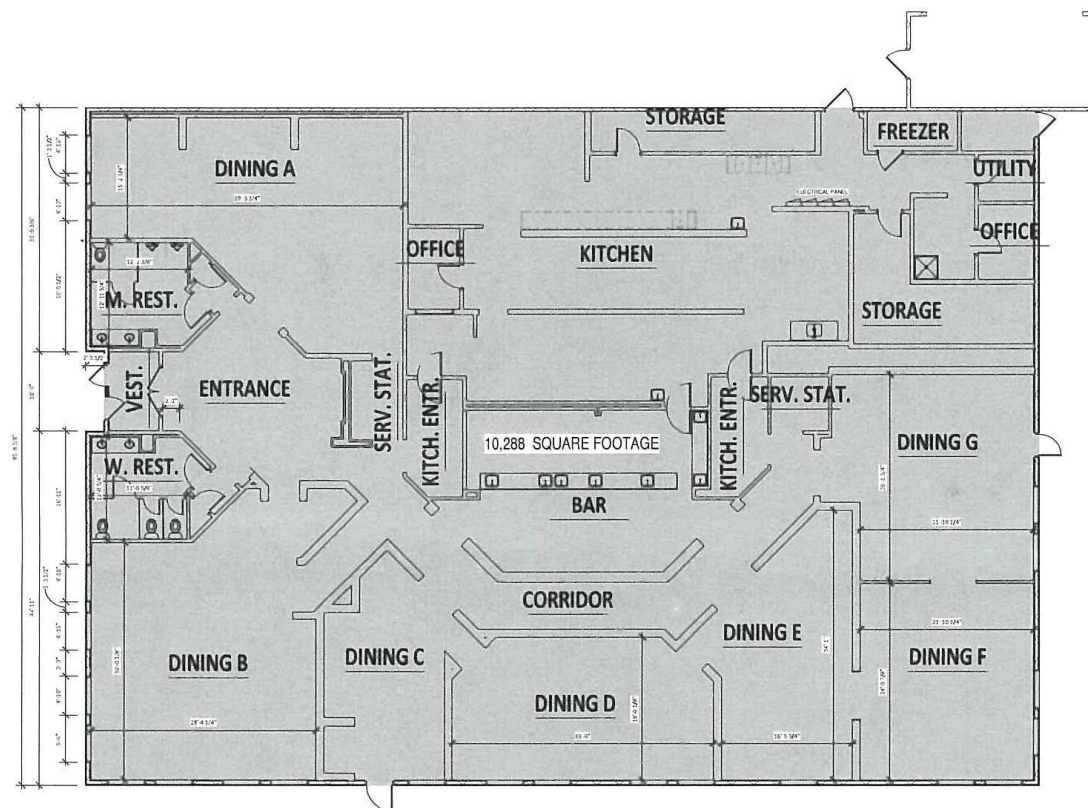
Site Plans

Floor Plans

Aerial

Agent Info

Suite 16 - Restaurant Space



*All measurements and all calculations of area are approximate and not guaranteed

CONTACT

Lan Heath
478-746-9421 Office
478-731-5899 Cell
lheath@fickling.com

Jenny Howell (Fluent in Spanish)
478-746-9421 Office
786-449-8523 Cell
jenny@fickling.com



577 Mulberry St, Suite 1100
Macon, GA 31201
478.746.9421 Office
<https://commercial.fickling.com>

RETAIL SPACE FOR LEASE: SUMMIT AT THE MALL

3755 Bloomfield Road
Macon, GA 31206



Summary

Area Info

Site Plans

Floor Plans

Aerial

Agent Info



CONTACT

Lan Heath
478-746-9421 Office
478-731-5899 Cell
lheath@fickling.com

Jenny Howell (Fluent in Spanish)
478-746-9421 Office
786-449-8523 Cell
jenny@fickling.com



577 Mulberry St, Suite 1100
Macon, GA 31201
478.746.9421 Office
<https://commercial.fickling.com>

RETAIL SPACE FOR LEASE: SUMMIT AT THE MALL

3755 Bloomfield Road
Macon, GA 31206



Summary

Area Info

Site Plans

Floor Plans

Aerial

Agent Info

Presented by: Lan Heath

Lan has extensive experience in the commercial and multi-family development fields. He started in that industry as a founding principal with Heath & Associates, Inc. and MMI Capital, LLC. In October 1995. Those companies focused on development, investment, finance and management of multi-family market rate and tax credit properties (section 42), as well build-to-suit commercial investment properties leased to federal, state and county governmental agencies and fortune 1000 corporate customers. He was responsible for the development, finance, and management of nearly 500,000 square feet of space in five southeastern states.

Since joining the Fickling Team in October of 2019 his focus has been in retail center, industrial, automotive, warehousing and distribution owner representation, sales, leasing and investment.

Presented by: Jenny Howell

With over two decades of experience in sales, marketing, and business development, Jenny Howell combines global hospitality expertise with deep commercial real estate insight. Before entering real estate, Jenny was Director of Sales and Marketing for luxury resorts in Miami Beach, where she led diverse teams and managed multimillion-dollar accounts. Her background negotiating with international clients and driving large-scale revenue growth now informs her success in brokerage.

Jenny represents industrial and medical tenants, national franchisees, and institutional landlords, specializing in land sales for commercial and multifamily development. Fluent in English, Spanish (native), and Portuguese, she connects seamlessly across markets and cultures. An active community leader, Jenny serves on the Board of Directors for the Greater Macon Chamber of Commerce, volunteers with Visit Macon, and is a proud member of CCIM (Candidate), ACBR, and GHCC.

CONTACT

Lan Heath

478-746-9421 Office
478-731-5899 Cell
lheath@fickling.com

Jenny Howell (Fluent in Spanish)

478-746-9421 Office
786-449-8523 Cell
jenny@fickling.com



577 Mulberry St, Suite 1100
Macon, GA 31201
478.746.9421 Office
<https://commercial.fickling.com>