

# 2700 Napa Valley Corporate Dr., Napa

## Suite B ~ ±13,304 SF ~ \$1.25/SF/Mo. NNN



- Reception Area
- Conference Room
- ±17 Private Offices
- Cubicle Areas
- Kitchenette
- Mail Room & Server Room
- Oversized Restrooms w/Showers
- Single Story Office in City of Napa
- Separately Metered
- Walking Distance to Dining Options
- Generous Full-Height Windows
- Bus Stop Nearby



**A lease of five years or more will be granted a concession of three months free Base Rent if the lease is signed by the end of 2024. Some suites are divisible to a minimum of ±3,000 SF.**

**NOTE:** Other office suites available of 5,158 SF & 14,245 SF which could be divisible to a minimum of ±3,000 SF. Divisions will affect the price, but be reasonably negotiated.

Virtual Tour: <https://www.youtube.com/watch?v=LPh30-BTnMQ>

\*For up to 5 Years, then 1.5% for any extended term.



**Michael Moffett**  
License #00946472  
707.479.1976  
mmoffett@cnapavalley.com

1775 Lincoln Ave.  
Napa, CA 94558

**Cathy Holmes**

License #01355085  
707.304.3338

cholmes@cnapavalley.com





**COLDWELL BANKER  
COMMERCIAL**  
BROKERS  
OF THE VALLEY

# 2700 Napa Valley Corporate Dr., Napa

## Suite B ~ ±13,304 SF ~ \$1.25/SF/Mo. NNN



Reception



Conference Room



Office Area



Signage

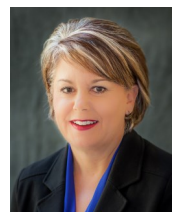


**Michael Moffett**  
License #00946472  
707.479.1976  
mmoffett@cbnapavalley.com

1775 Lincoln Ave.  
Napa, CA 94558

**Cathy Holmes**

License #01355085  
707.304.3338  
cholmes@cbnapavalley.com







**COLDWELL BANKER  
COMMERCIAL**  
BROKERS  
OF THE VALLEY

# 2700 Napa Valley Corporate Dr., Napa

Suite B ~ ±13,304 SF ~ \$1.25/SF/Mo. NNN



**Michael Moffett**  
License #00946472  
707.479.1976  
mmoffett@cnapavalley.com

1775 Lincoln Ave.  
Napa, CA 94558

**Cathy Holmes**

License #01355085  
707.304.3338

cholmes@cnapavalley.com

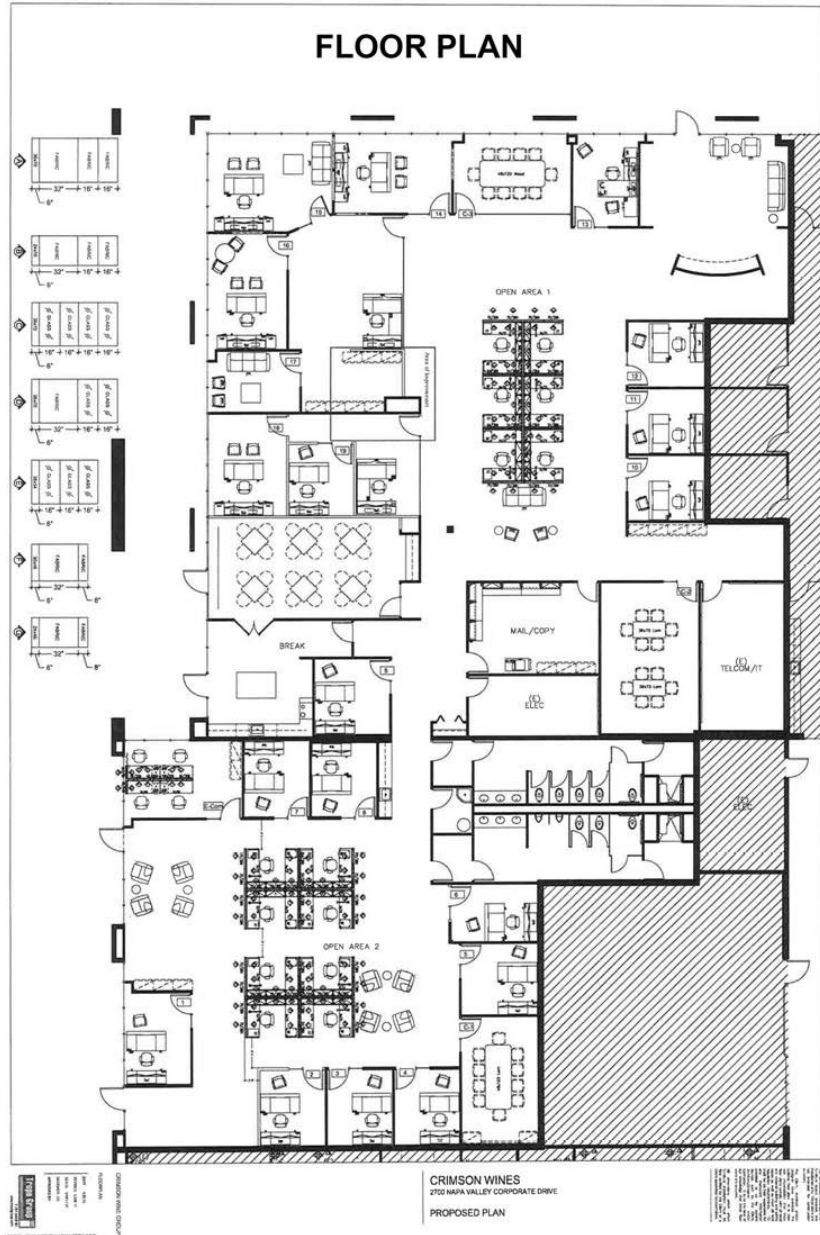




**COLDWELL BANKER  
COMMERCIAL**

**BROKERS  
OF THE VALLEY**

# 2700 Napa Valley Corporate Dr., Napa Suite B ~ ±13,304 SF ~ \$1.25/SF/Mo. NNN



**Michael Moffett**  
License #00946472  
707.479.1976  
mmoffett@cbnapavalley.com

1775 Lincoln Ave.  
Napa, CA 94558

**Cathy Holmes**

License #01355085  
707.304.3338  
cholmes@cbnapavalley.com

