

FOR LEASE

0.89 ACRE PAVED INDUSTRIAL YARD

15059

Slover Ave

FONTANA, CA 92337-7238



Edmond Melendez  
(626) 434-0494  
edmond@emreco.com  
Ca Lic # 01518581

**EMRECS**  
INDUSTRIAL REAL ESTATE





# Property Overview

Office with paved storage yard in Southwest Industrial Park. Property situated within Slover Central Manufacturing District (SCD). Fully gated, majority paved, two aprons (ingress/egress) to Slover Ave., adjacent SC Fuels, four blocks from I-10 Fwy & Cherry Ave.

**15059 Slover Ave,  
Fontana, CA 92337-7238**

Property Address

**0237-061-06**

APN

**General Industrial (I-G)**

Zoning

**756 Sq. Ft.**

Office

**Southwest Industrial Park (SWIP)**

Specific Plan

**220V**

Power

**Slover Central Manufacturing District (SCD)**

District

**February 1, 2025**

Available

**\$0.394 psf - \$14,500 Per Month**

Base Rent

**36,800 Sq. Ft.**

Property Size

**\$0.017 psf - \$635 Per Month**

OpEx





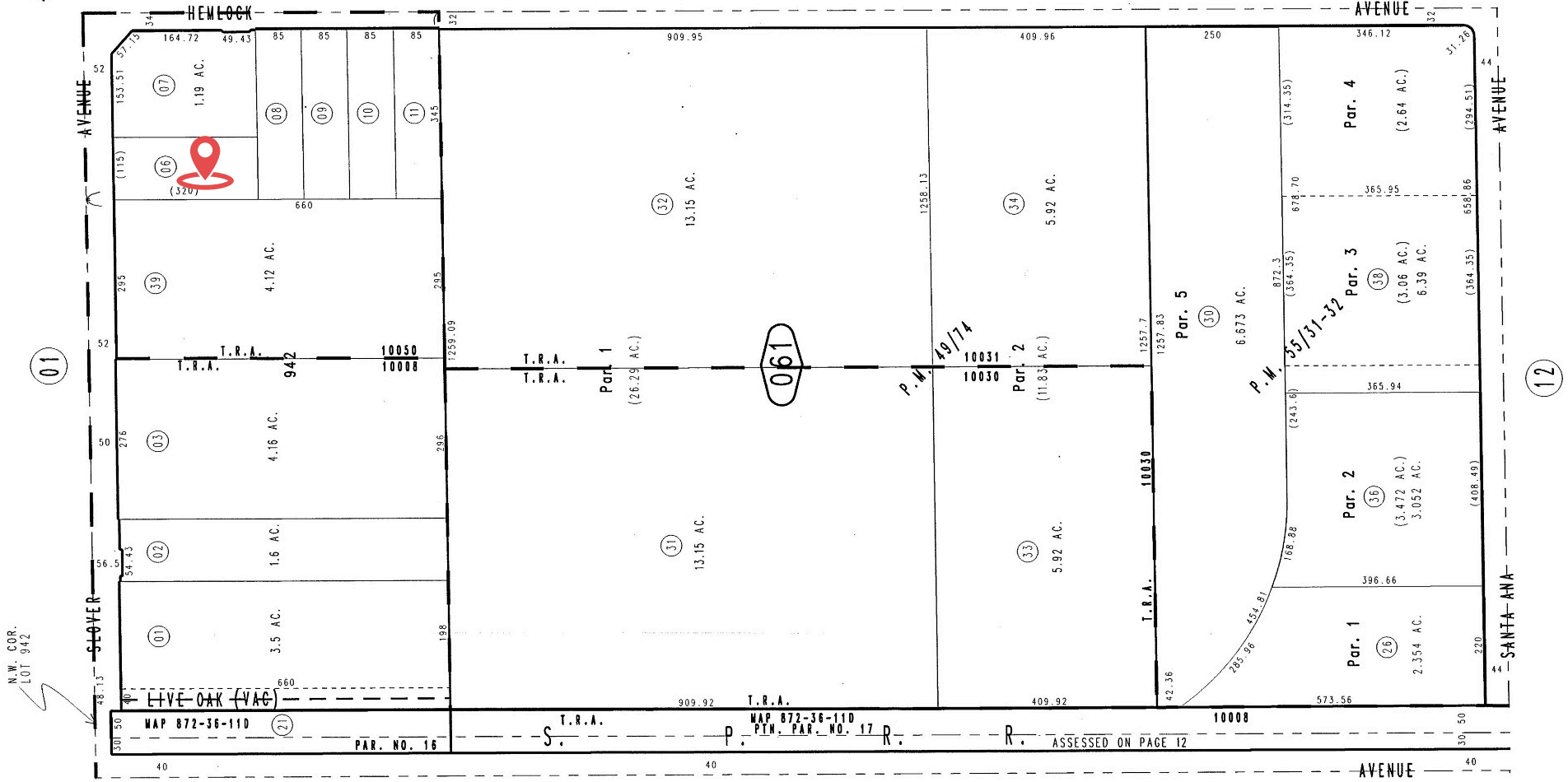
# Investment Highlights

- ✓ Zoned General Industrial (I-G)
- ✓ Flexible Allowable Uses
- ✓ Majority Paved Storage Yard
- ✓ Classic Office Space w/ Reception Area
- ✓ Private & Employee Restrooms
- ✓ Adjacent to SC Fuels
- ✓ Four blocks from I-10 Fwy & Cherry Ave



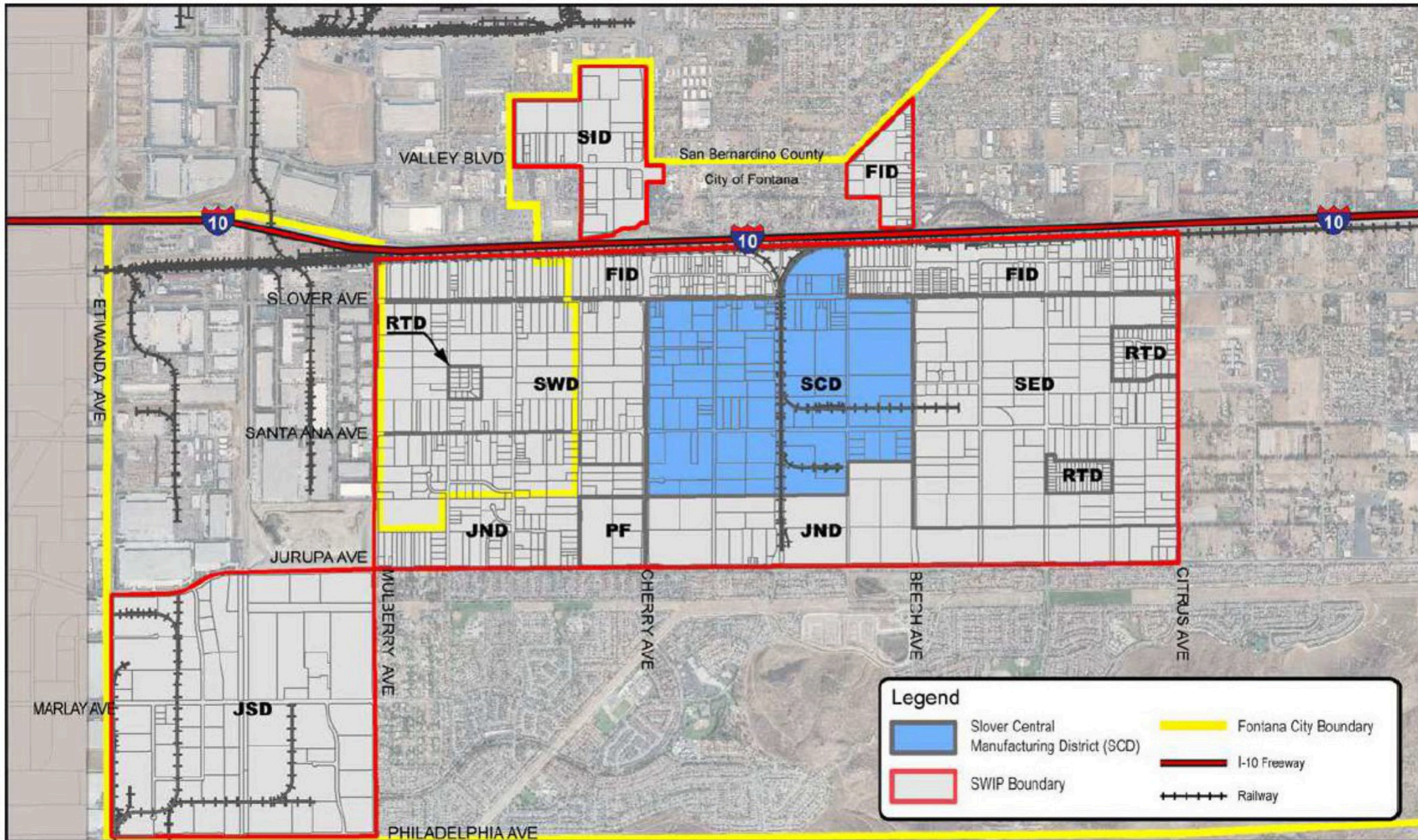


1" = 200'



# Slover Central Manufacturing District

**15059 Slover Ave,  
Fontana, CA 92337-7238**

[illegible]

## City of Fontana Southwest Industrial Park (SWIP) Specific Plan



# 15059

# Slover Ave

FONTANA, CA 92337-7238

**For more information contact:**

**Edmond Melendez**  
(626) 434-0494  
edmond@emreco.com  
Ca Lic # 01518581

**EMRECS**  
INDUSTRIAL REAL ESTATE



We obtained the information above from sources we believe to be reliable. However, we have not verified its accuracy and make no guarantee, warranty, or representation about it. It is submitted subject to the possibility of errors, omissions, change of price, or other conditions, prior sale, lease or financing or withdrawn without notice. We include projections, opinions, assumptions or estimates. You and your tax and legal advisors should conduct your own investigations of the property and transaction.