

FOR LEASE

Flex-Retail/Warehouse



4150 E. 43rd Street
North Little Rock, Arkansas

- ◆ 27,000 sf flex space
- ◆ Convenient access to US-57
- ◆ Available immediately
- ◆ Loading dock
- ◆ \$8.00/SF
- ◆ Yard space available



Will Collins
will@cypress-properties.com

501.907.9070
cypress-properties.com



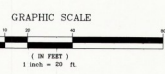
4150 E. 43rd Street
North Little Rock, Arkansas



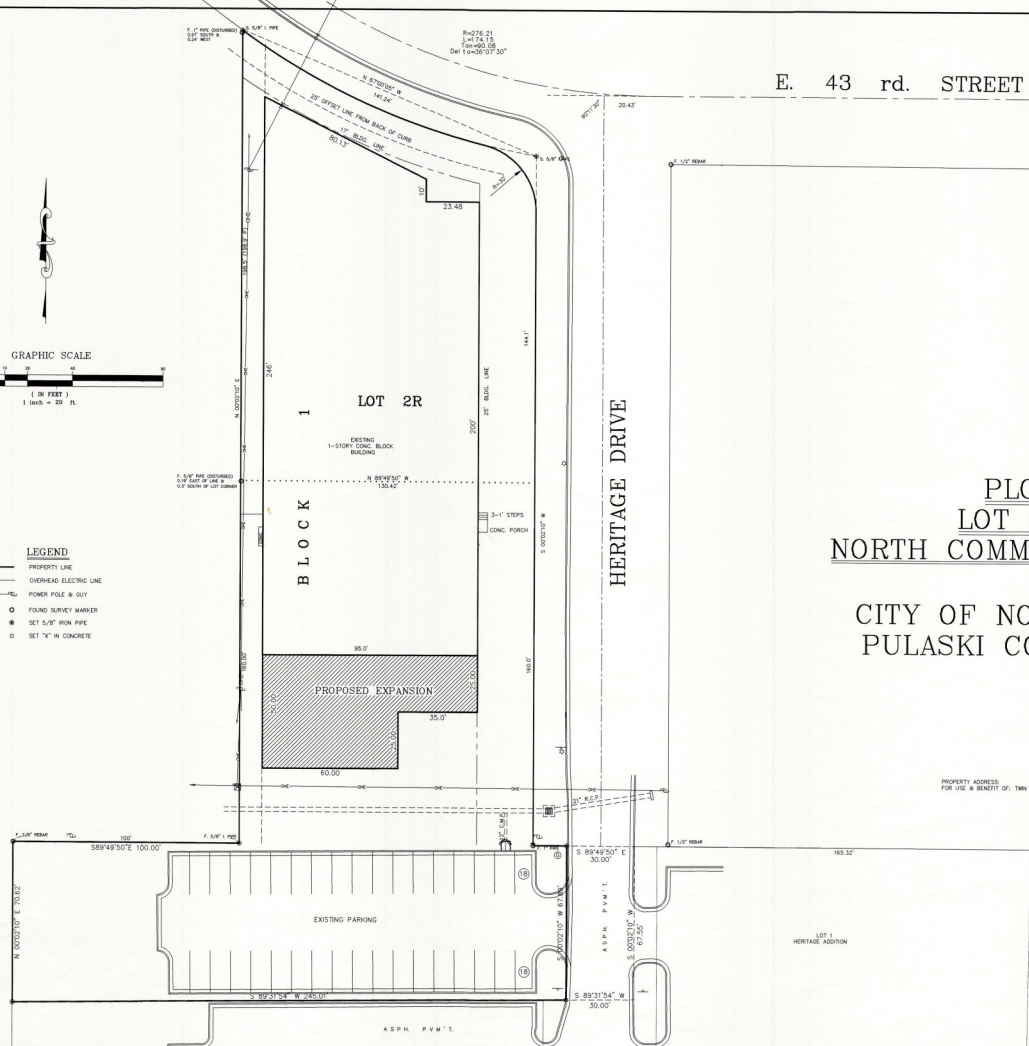
Will Collins
will@cypress-properties.com

501.907.9070
cypress-properties.com


LOT 2, BK. 1, SUBD. 14, DIV. 1, MAP 15, 15-21, 17, 2000, TOWN OF LITTLE ROCK, ARK.



- LEGEND**
- PROPERTY LINE
 - OVERHEAD ELECTRIC LINE
 - POWER POLE & GUY
 - FOUND SURVEY MARKER
 - SET 5/8" IRON PIPE
 - SET "X" IN CONCRETE



**PLOT PLAN
LOT 2R, BLOCK 1
NORTH COMMERCIAL SUBDIVISION
IN
CITY OF NORTH LITTLE ROCK
PULASKI COUNTY, ARKANSAS**



**THOMAS
ENGINEERING
COMPANY**

3810 LOOKOUT ROAD, N. LITTLE ROCK, AR. 72116
TEL. 501-703-4403 FAX. 501-703-4014

PLOT PLAN LOT 2R, BLOCK 1			
NORTH COMMERCIAL SUBDIVISION NORTH LITTLE ROCK, AR.			
APPROVED	DRAWN BY	DATE	SHEET NO.
MEM	MEM	1-25-2000	1 OF 1

