

FREEDOM POINT - MEDICAL OFFICE SPACE

SEQ Washington Boulevard & Blue Oaks Boulevard (at Highway 65) - Roseville, CA

FOR SALE OR LEASE

A PROUD MEMBER OF
CHAINLINKS
RETAIL ADVISORS



**Renderings are subject to change.*

Robb Osborne
Executive Vice President
CA DRE #01398696
rosborne@GallelliRE.com
(916) 770-9151

Brandon Sessions
Senior Vice President
CA DRE #01914432
bsessions@GallelliRE.com
(916) 784-3339

Gallelli Real Estate
3005 Douglas Blvd., Suite 200
Roseville, CA 95661
P 916 772 1700
www.GallelliRE.com
Gary B. Gallelli, Broker
CA DRE #00811881



Licensed as Real Estate Salespersons by the CA DRE. The information contained herein has been obtained from sources we deem reliable. While we have no reason to doubt its accuracy, we do not guarantee it.
© Gallelli Real Estate. All Rights Reserved.

OUTSTANDING MEDICAL OFFICE FOR SALE OR LEASE

PROPERTY HIGHLIGHTS & DEMOGRAPHICS

A PROUD MEMBER OF
CHAINLINKS
RETAIL ADVISORS

- Proposed Two-Story Medical Office Building for Sale or Lease
- Condo options available $\pm 3,199$ GSF – $\pm 20,028$ GSF
- Located within close proximity to all regional medical centers; Sutter Roseville campus, Kaiser Roseville Campus, Adventist Health
- Parking allows for medical and dental uses
- **Purchase Price: \$425/SF “Cold Shell”**
- **Call Agent for Leasing Options!**

location: SEQ Washington Boulevard and Blue Oaks Boulevard (at Highway 65)
Roseville, CA

notable tenants in close proximity: Top Golf, Walmart Super Center, Sam's Club, Target, RC Willey, Cinemark Theaters, Sportsman's Warehouse, Crunch Fitness, Dollar Tree, Petco



2024 total population

1-mile	7,684
3-mile	110,302
5-mile	232,615



2024 daytime population

1-mile	8,313
3-mile	114,761
5-mile	253,950



2024 total employees

1-mile	8,190
3-mile	50,783
5-mile	114,837



traffic counts

CA Hwy 65 (at Washington Blvd)	105,084
Washington Blvd	19,499
Blue Oaks Blvd	41,732



2024 total households

1-mile	2,616
3-mile	40,791
5-mile	86,166



2024 average HH income

1-mile	\$193,817
3-mile	\$164,704
5-mile	\$163,383

Adjacent dynamic traffic generators include:



Tenants Nearby include:

Robb Osborne
Executive Vice President
CA DRE #01398696
rosborne@GallelliRE.com
(916) 770-9151

Brandon Sessions
Senior Vice President
CA DRE #01914432
bsessions@GallelliRE.com
(916) 784-3339

Gallelli Real Estate
3005 Douglas Blvd., Suite 200
Roseville, CA 95661
P 916 772 1700
www.GallelliRE.com
Gary B. Gallelli, Broker
CA DRE #00811881



OUTSTANDING MEDICAL OFFICE FOR SALE OR LEASE

PROPERTY OVERVIEW

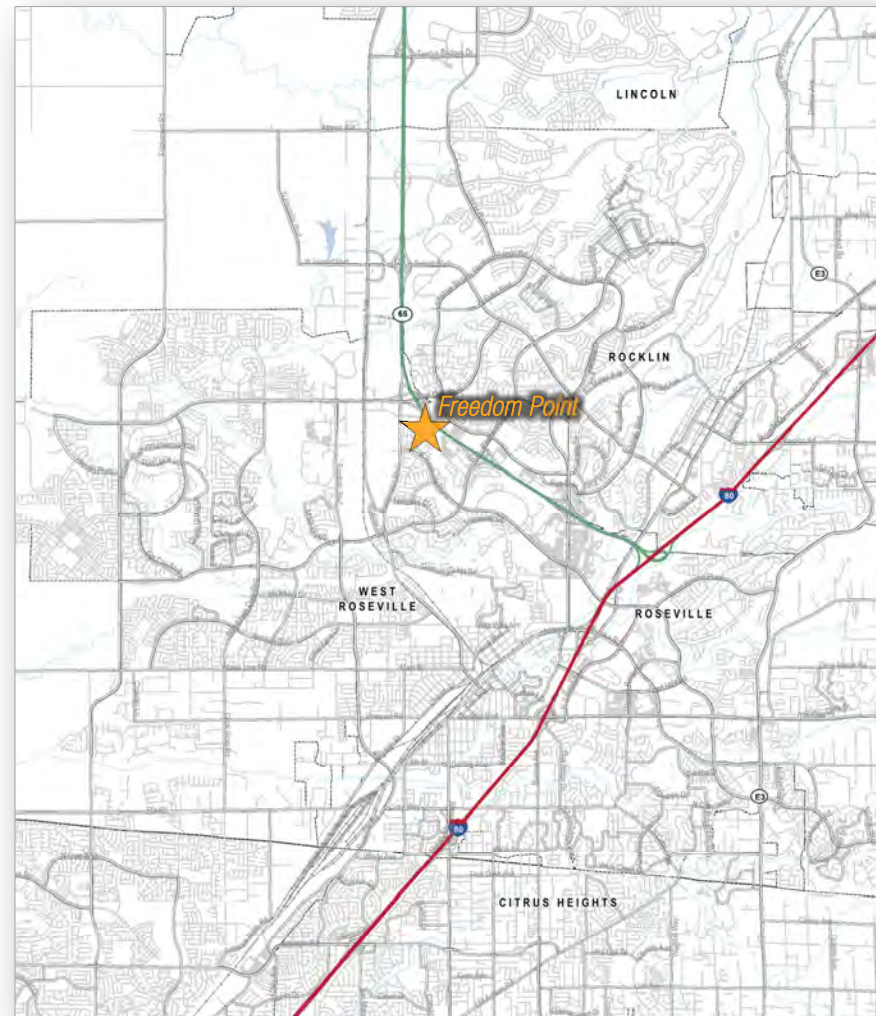
A PROUD MEMBER OF
CHAINLINKS
RETAIL ADVISORS

Freedom Point is situated at the southeast quadrant of Washington and Blue Oaks Boulevards at Highway 65 and is the City of Roseville's largest mixed-use development.

The overall project encompasses nearly 59 total acres. Top Golf™, a national, high profile, golf-themed entertainment venue opened its first Northern California location here in 2016 and continues to exceed sales expectations. Chipotle, Peet's Coffee, Noah's Bagels, Jersey Mike's Subs, Chicago's Pizza With a Twist and Smart Axe are now open at the adjacent center.

In addition, two extended-stay hotels are adjacent and have a total of 211 rooms. The newest addition to the project is Living Spaces.

The site benefits from strong trade area demographics and excellent retail/restaurant synergy in the immediate vicinity. The Roseville Trade Area continues to be one of the strongest retail markets in the Greater Sacramento Region.



Robb Osborne
Executive Vice President
CA DRE #01398696
rosborne@GallelliRE.com
(916) 770-9151

Brandon Sessions
Senior Vice President
CA DRE #01914432
bsessions@GallelliRE.com
(916) 784-3339

Gallelli Real Estate
3005 Douglas Blvd., Suite 200
Roseville, CA 95661
P 916 772 1700
www.GallelliRE.com
Gary B. Gallelli, Broker
CA DRE #00811881



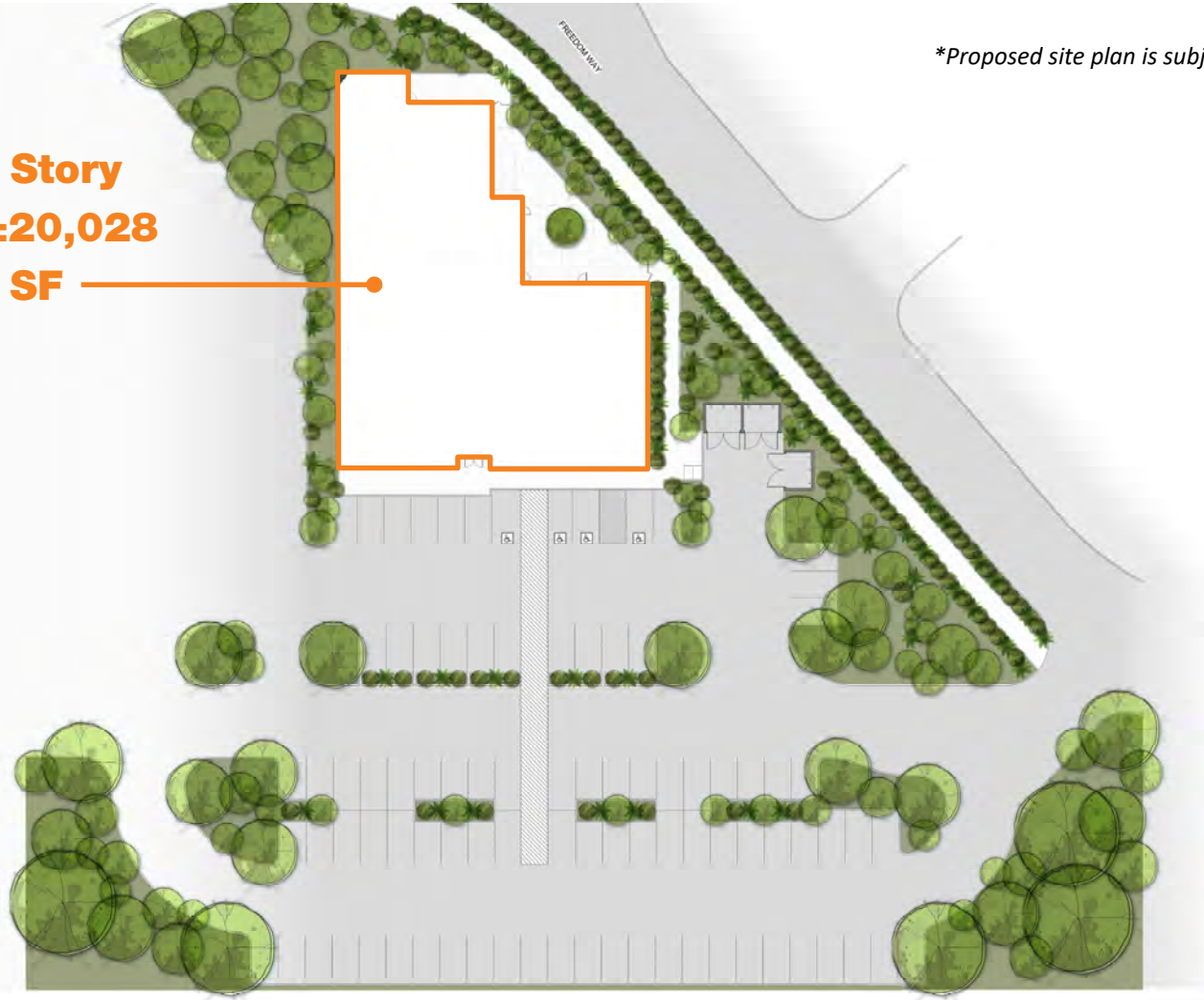
OUTSTANDING MEDICAL OFFICE FOR SALE OR LEASE

PROPOSED SITE PLAN

A PROUD MEMBER OF
CHAINLINKS
RETAIL ADVISORS

**Proposed site plan is subject to change.*

**Proposed Two Story
Medical Office ±20,028
Total Gross SF**



SCALE: 1/16" = 1'-0"

Robb Osborne
Executive Vice President
CA DRE #01398696
rosborne@GallelliIRE.com
(916) 770-9151

Brandon Sessions
Senior Vice President
CA DRE #01914432
bsessions@GallelliIRE.com
(916) 784-3339

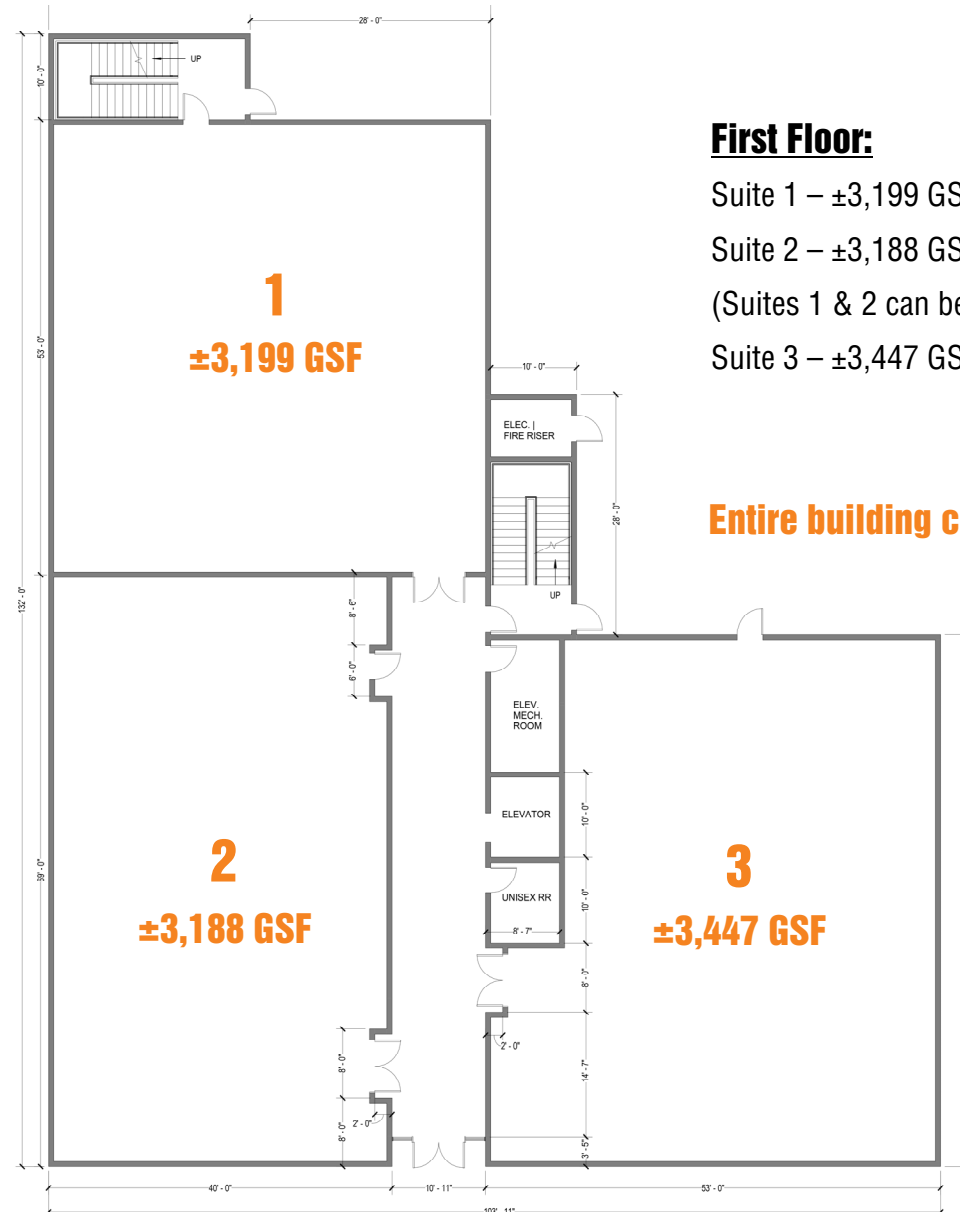
Gallelli Real Estate
3005 Douglas Blvd., Suite 200
Roseville, CA 95661
P 916 772 1700
www.GallelliIRE.com
Gary B. Gallelli, Broker
CA DRE #00811881



OUTSTANDING MEDICAL OFFICE FOR SALE OR LEASE

PROPOSED SITE PLAN - FIRST FLOOR

A PROUD MEMBER OF
CHAINLINKS
RETAIL ADVISORS



**Proposed site plan is subject to change.*

First Floor:

Suite 1 – ±3,199 GSF

Suite 2 – ±3,188 GSF

(Suites 1 & 2 can be combined for ±6,387 GSF)

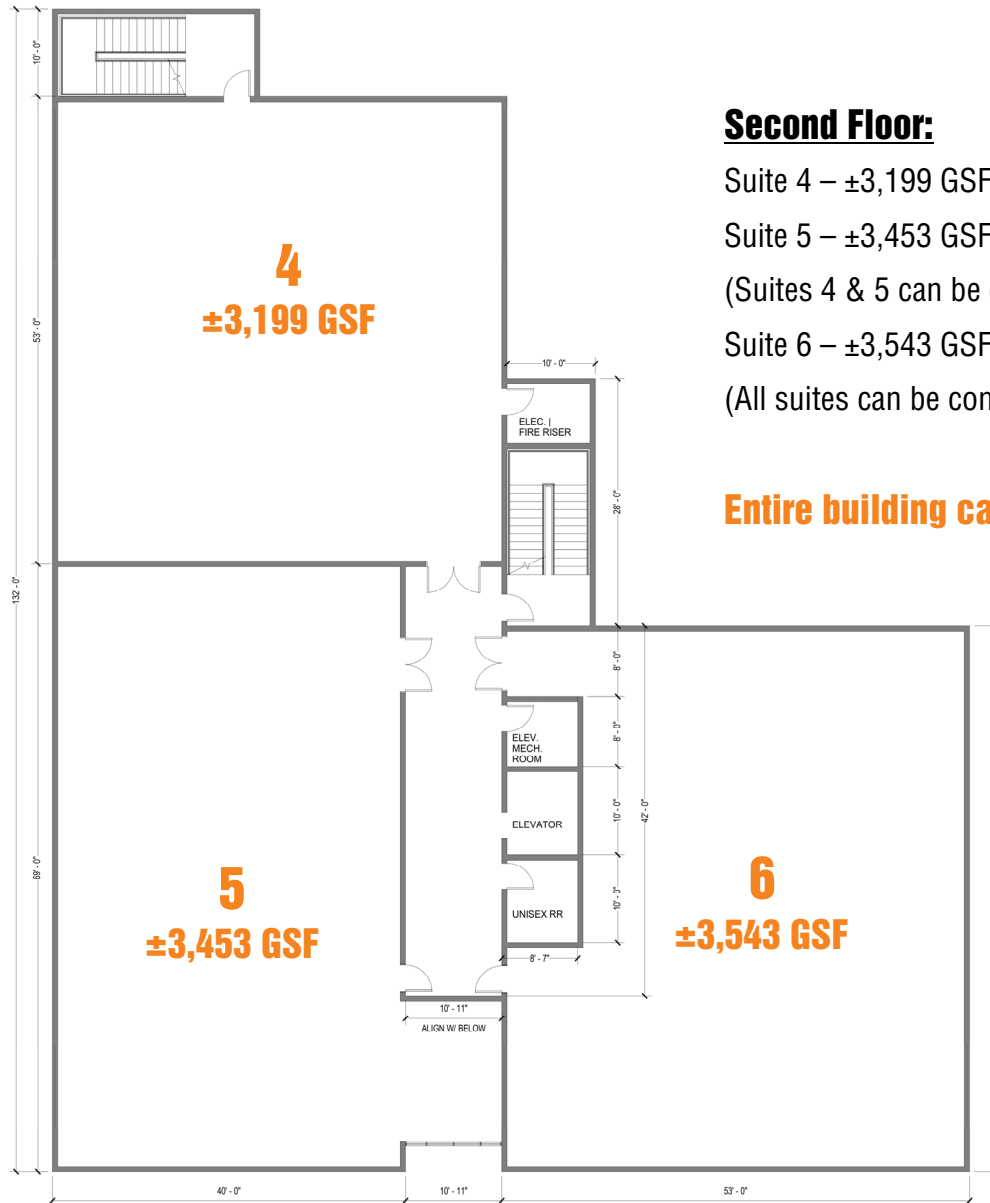
Suite 3 – ±3,447 GSF

Entire building can be available for single user – up to ±20,028 GSF

OUTSTANDING MEDICAL OFFICE FOR SALE OR LEASE

PROPOSED SITE PLAN - SECOND FLOOR

A PROUD MEMBER OF
CHAINLINKS
RETAIL ADVISORS



**Proposed site plan is subject to change.*

Second Floor:

Suite 4 – ±3,199 GSF

Suite 5 – ±3,453 GSF

(Suites 4 & 5 can be combined for ±6,652 GSF)

Suite 6 – ±3,543 GSF

(All suites can be combined for ±10,195 GSF)

Entire building can be available for single user – up to ±20,028 GSF

OUTSTANDING MEDICAL OFFICE FOR SALE OR LEASE

PROPOSED SITE RENDERINGS

A PROUD MEMBER OF
CHAINLINKS
RETAIL ADVISORS



**Renderings are subject to change.*

Robb Osborne
Executive Vice President
CA DRE #01398696
rosborne@GallelliRE.com
(916) 770-9151

Brandon Sessions
Senior Vice President
CA DRE #01914432
bsessions@GallelliRE.com
(916) 784-3339

Licensed as Real Estate Salespersons by the CA DRE. The information contained herein has been obtained from sources we deem reliable. While we have no reason to doubt its accuracy, we do not guarantee it.
© Gallelli Real Estate. All Rights Reserved.

Gallelli Real Estate
3005 Douglas Blvd., Suite 200
Roseville, CA 95661
P 916 772 1700
www.GallelliRE.com
Gary B. Gallelli, Broker
CA DRE #00811881



OUTSTANDING MEDICAL OFFICE FOR SALE OR LEASE

IMMEDIATE VICINITY RETAIL & EMPLOYMENT CENTERS AERIAL

A PROUD MEMBER OF
CHAINLINKS
RETAIL ADVISORS



Robb Osborne
Executive Vice President
CA DRE #01398696
rosborne@GallelliRE.com
(916) 770-9151

Brandon Sessions
Senior Vice President
CA DRE #01914432
bsessions@GallelliRE.com
(916) 784-3339

Gallelli Real Estate
3005 Douglas Blvd., Suite 200
Roseville, CA 95661
P 916 772 1700
www.GallelliRE.com
Gary B. Gallelli, Broker
CA DRE #00811881



OUTSTANDING MEDICAL OFFICE

SEQ Washington Boulevard & Blue Oaks Boulevard (at Highway 65) - Roseville, CA

FOR SALE OR LEASE

A PROUD MEMBER OF
CHAINLINKS
RETAIL ADVISORS

**Renderings are subject to change.*



Robb Osborne
Executive Vice President
CA DRE #01398696
rosborne@GallelliRE.com
(916) 770-9151

Brandon Sessions
Senior Vice President
CA DRE #01914432
bsessions@GallelliRE.com
(916) 784-3339

Gallelli Real Estate
3005 Douglas Blvd., Suite 200
Roseville, CA 95661
P 916 772 1700
www.GallelliRE.com
Gary B. Gallelli, Broker
CA DRE #00811881



Licensed as Real Estate Salespersons by the CA DRE. The information contained herein has been obtained from sources we deem reliable. While we have no reason to doubt its accuracy, we do not guarantee it.
© Gallelli Real Estate. All Rights Reserved.