

FOR LEASE | WAREHOUSE



WAREHOUSE SPACE

10442 Liberty Lane, Chisago City, 55013



FOR MORE INFORMATION CONTACT:

Julie Nash Smith

651-982-1256

jnashsmith@REMAX.NET

RE/MAX Synergy

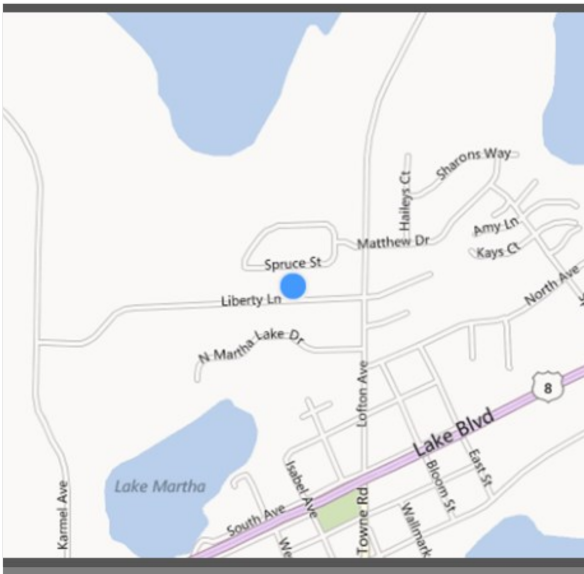
FOR LEASE | WAREHOUSE

Warehouse Space

10442 Liberty Lane, Chisago City, 55013



PROPERTY HIGHLIGHTS



- **8,800 SF AVAILABLE**
- **22' CLEAR HEIGHT / HEAVY POWER**
- **CONCRETE & STEEL BUILDING**
- **RESTROOM & 21x17 OFFICE**
- **12X14 DRIVE IN DOOR**
- **POTENTIAL TO USE DOCK DOORS**
- **LEASE RATE: \$9 psf / \$2.10 psf Exp**
- ** Utilities - prorated**

FOR LEASE | WAREHOUSE

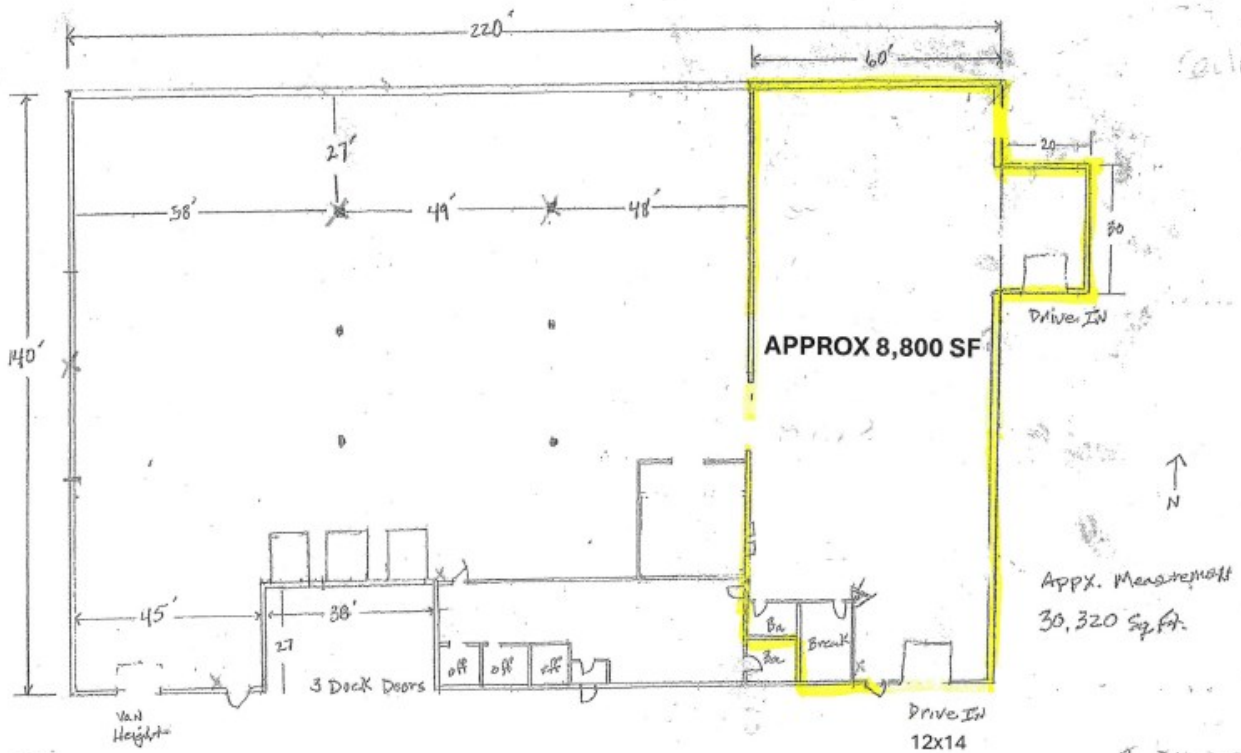
WAREHOUSE SPACE

10442 Liberty Lane, Chisago City, 55013



FLOOR PLAN

10442 LIBERTY LANE | CHISAGO, MN 55013 | CHISAGO COUNTY



FOR LEASE | WAREHOUSE

WAREHOUSE SPACE

10442 Liberty Lane, Chisago City, 55013



SITE PLAN

