

SWC

THORNYDALE RD & INA RD

Tucson, AZ

FOR LEASE : ±2,587 SF End Cap



AVAILABLE
±2,587 SF

PAD
AVAILABLE

The Alexander
In Const
209 Units

Avilla
Marana I
166 Units

Avilla
Marana II
118 Units

PCA

PHOENIX COMMERCIAL ADVISORS

Marana
392 Units

site plan overview

AVAILABILITY:	Shop Space ±2,587 SF & ±1.94 Acres Pad Available
APN:	101-05-040G
ADDRESS:	39510 W Ina Rd, Tucson, AZ 85741
ZONING:	VC (Village Commercial)
PRICING:	Call for Pricing

traffic count ADOT 2024

Ina Rd

N ±33,357 VPD (NB & SB)
S ±38,093 VPD (NB & SB)

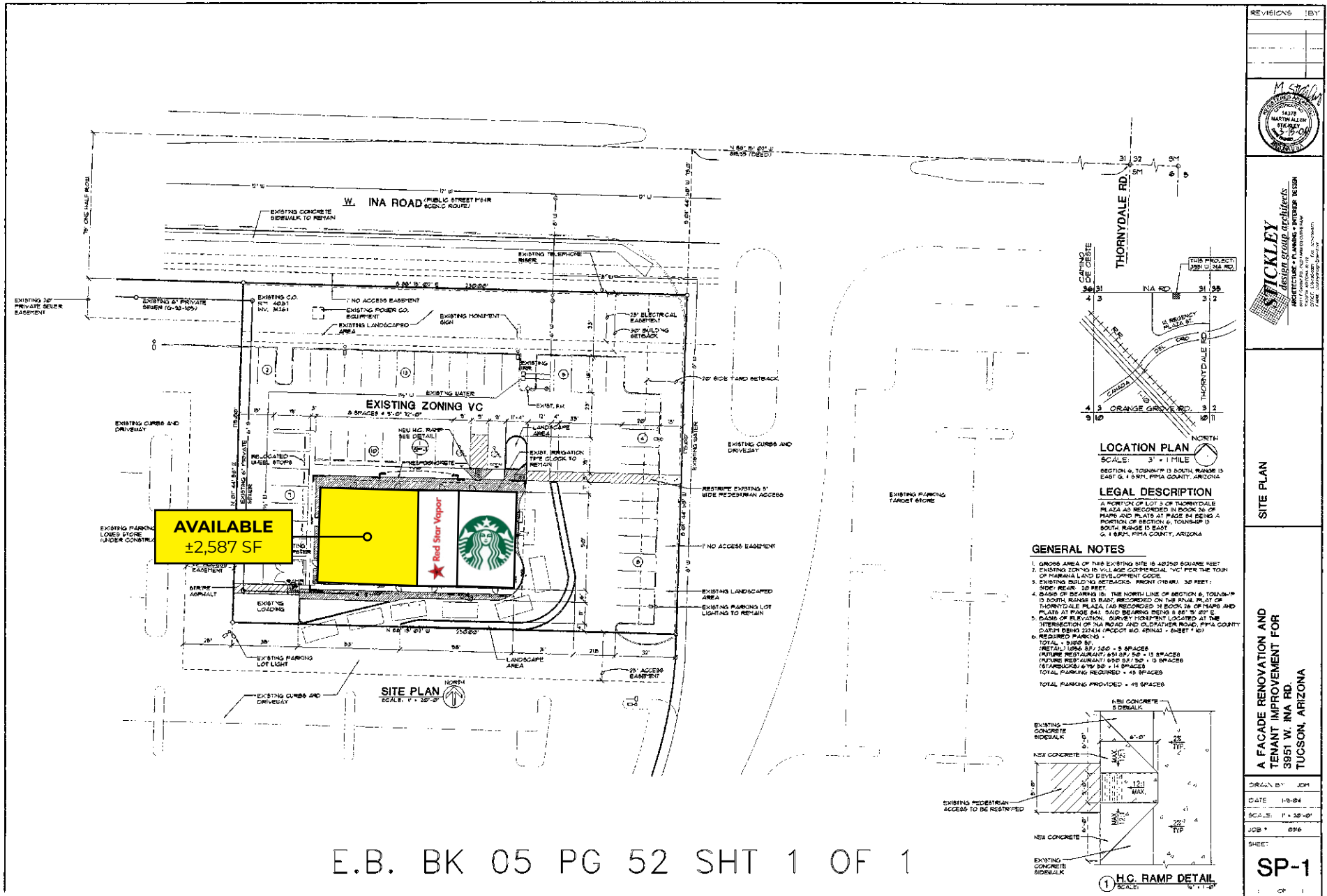
Thornysdale Rd

E ±34,568 VPD (EB & WB)
W ±43,014 VPD (EB & WB)

neighboring tenants



site plan



E.B. BK 05 PG 52 SHT 1 OF 1

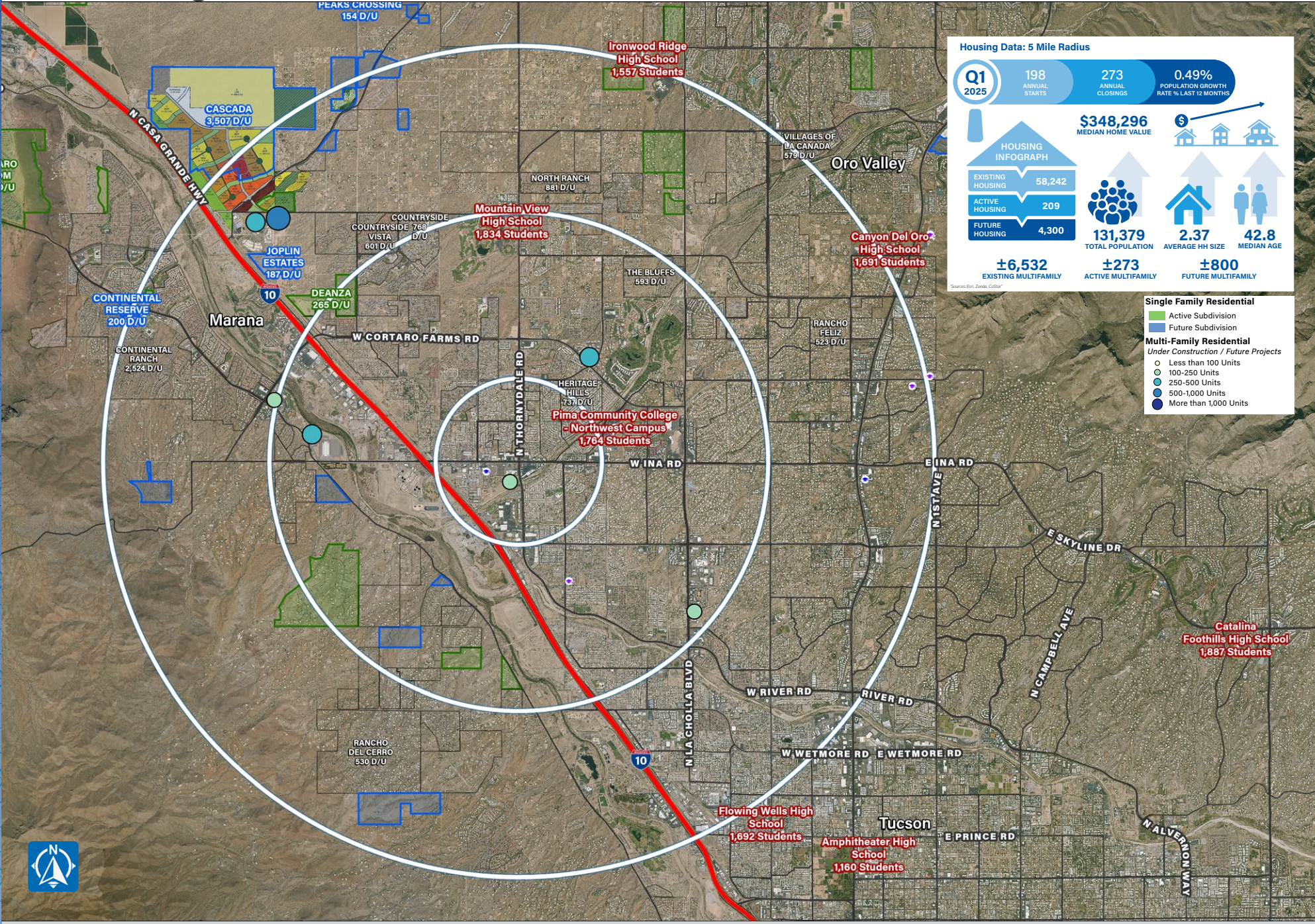
zoom aerial



wide aerial

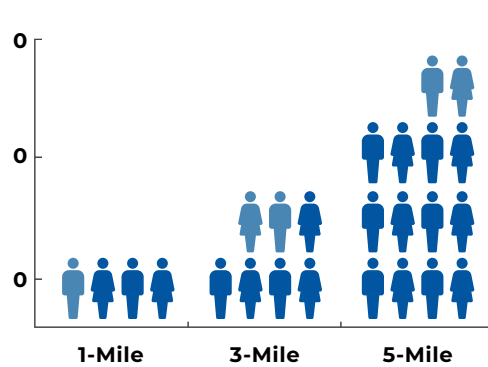


housing aerial



demographics overview

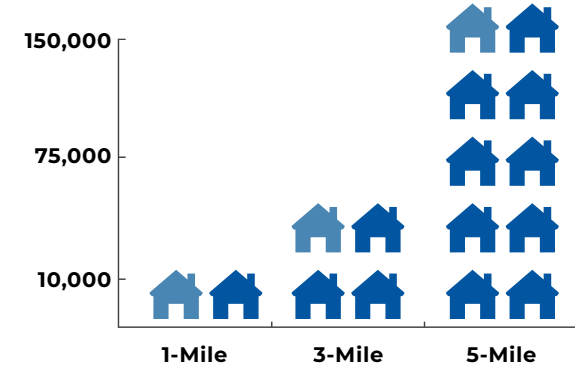
ESRI 2024



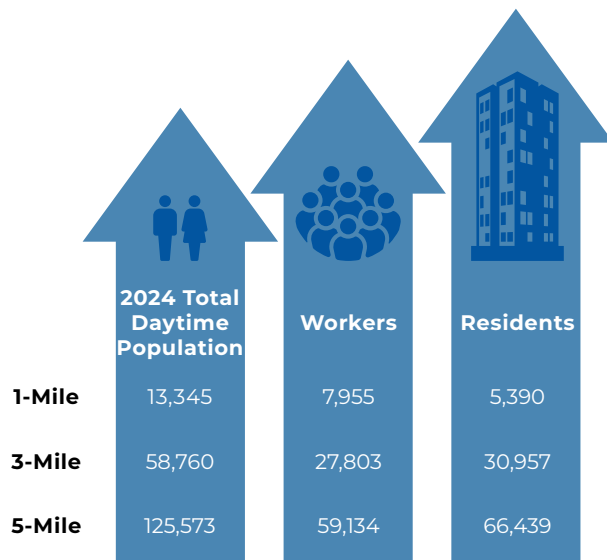
	1-Mile	3-Mile	5-Mile
2024 Total Population	11,116	61,649	131,379
2029 Total Population	12,151	63,380	134,477



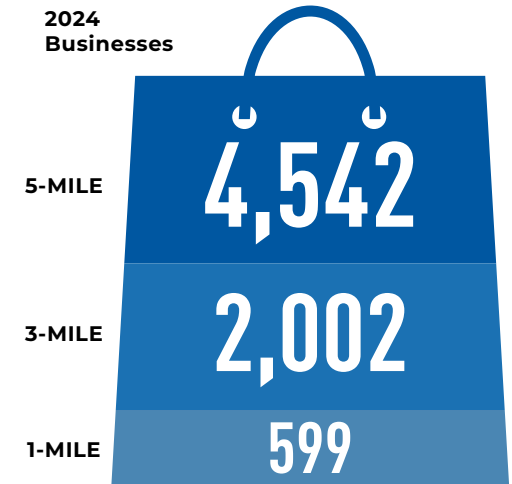
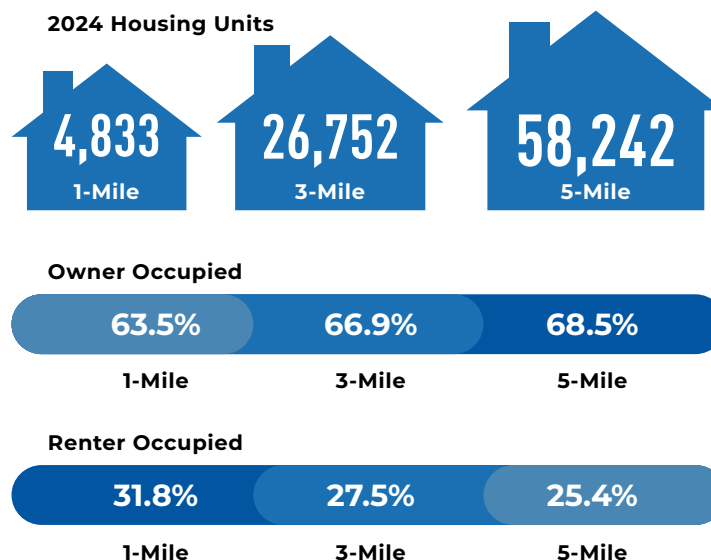
	Median HH Income	Average HH Income	Per Capita Income
1-Mile	\$72,733	\$87,134	\$36,393
3-Mile	\$79,531	\$99,617	\$41,309
5-Mile	\$83,590	\$108,766	\$45,624



	1-Mile	3-Mile	5-Mile
2024 Households	4,608	25,236	54,679
2029 Households	5,207	26,683	57,428



	2024 Total Daytime Population	Workers	Residents
1-Mile	13,345	7,955	5,390
3-Mile	58,760	27,803	30,957
5-Mile	125,573	59,134	66,439





exclusively listed by

CAMERON WARREN
(602) 288.3472
cwarren@pcaemail.com

DILLON YOUNG
(602) 288.3474
dyoung@pcaemail.com

PHOENIX COMMERCIAL ADVISORS
3131 East Camelback Road, Suite 340
Phoenix, Arizona 85016
P. (602) 957-9800
F. (602) 957-0889
phoenixcommercialadvisors.com

The information contained herein has been obtained from sources believed reliable. While we do not doubt its accuracy, we have not verified it and make no guarantee, warranty or representation about it. It is your responsibility to independently confirm its accuracy and completeness. Any projections, opinions, assumptions or estimates used are for example only, and do not represent the current or future performance of the property. The value of this transaction to you depends on tax and other factors which should be evaluated by your tax, financial and legal advisors. You and your advisors should conduct a careful, independent investigation of the property to determine to your satisfaction the suitability of the property for your needs.