



REAL ESTATE SERVICES

INDUSTRIAL CONDO | WEST DES MOINES, IA



## FOR LEASE

CS Real Estate Services has a brand new industrial condo, centrally located off of Delavan and Grand in West Des Moines. 2,855 sq ft available. Locally owned and operated. Call today to schedule your tour!

Information contained here deemed reliable but not guaranteed by CS Real Estate Services

CASEY SHELTON

t: 515-499-6194

e: [casey@csrealestateservice.com](mailto:casey@csrealestateservice.com)

a: 1980 NW 94th St STE E, Clive, IA 50325

## FOR LEASE

- Building has 2,855 sq ft available
- \$12p/s/f +NNN

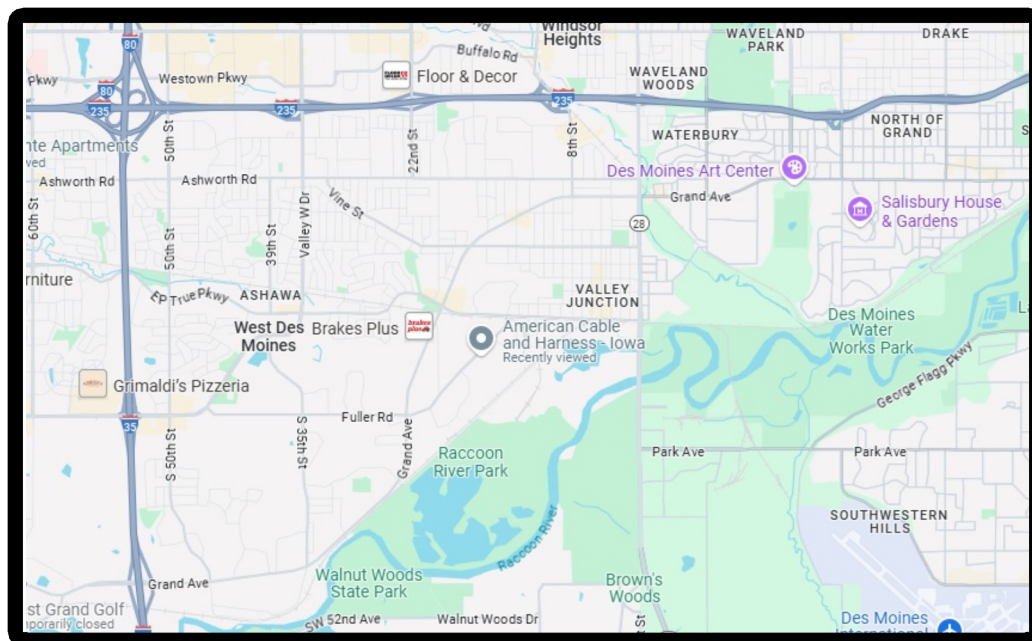
## FEATURES

- 14'x 14' overhead door
- 2 Reznor Heaters in the space
- 2 - 200 amp 3 phase electrical panels in the space
- 2 - Restroom stacks with water in the space
- 18' clear height
- 2 - Floor drains in the space
- Steel insulated walls



## LOCATION OVERVIEW

- Convenient access to I-35/I- 235
- Close to restaurants, retail, and industrial.
- Located just off of Delavan and Grand



Information contained here deemed reliable but not guaranteed by CS Real Estate Services

CASEY SHELTON

t: 515-499-6194

e: [casey@csrealestateservice.com](mailto:casey@csrealestateservice.com)

a: 1980 NW 94th St STE E, Clive, IA 50325