

FOR SUBLEASE

OFFICE SPACE AVAILABLE

6310

SAN VICENTE BOULEVARD

Los Angeles, CA 90048



PROPERTY DESCRIPTION

\$1200 DELUXE SUITE

We are a Legal Recruiting firm and we have a bit of extra space, which we are opening up to a sub-lease arrangement. The entire office is approximately 1,300 sq. ft. with four (4) individual suites. We have one deluxe suite available (9' x 13'), as well as an accompanying area and desk/cabinets for a secretary or assistant (9' x 4'). We are located in the historic Carthay Circle area in a terrific, Class-A building with all the expected building amenities.



CONTACT US

MARK LANDVER

Senior Associate

+1 310 550 2630

mark.landver@cbre.com

Lic. 01767071

www.cbre.com

CBRE

FOR SUBLEASE OFFICE SPACE AVAILABLE

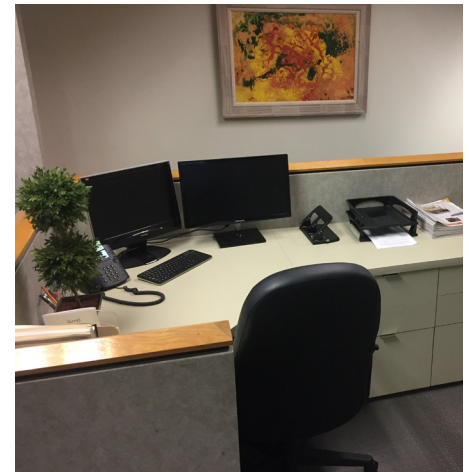
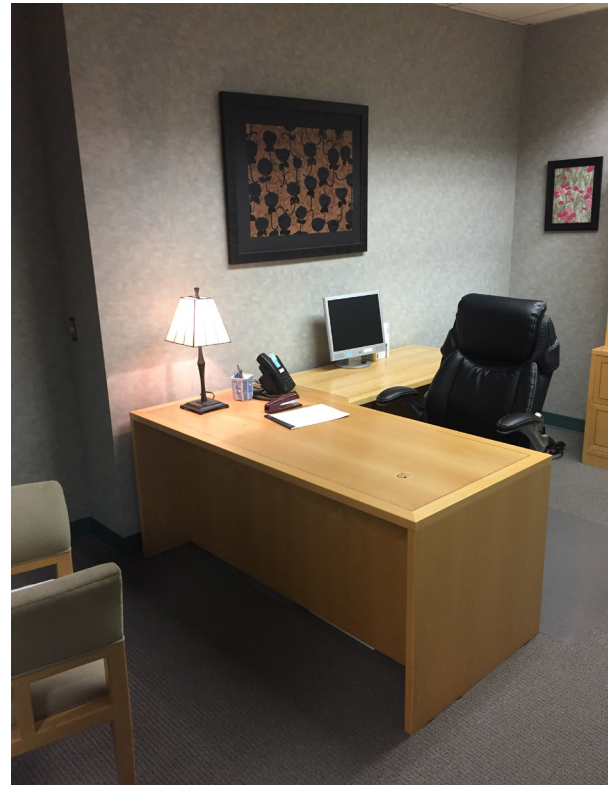
6310
SAN VICENTE BOULEVARD
Los Angeles, CA, 90048



PROPERTY DETAILS

The office comes fully furnished with everything needed to walk in and get to work on Day One: a custom wooden desk, matching file cabinet & hutch, outlets/connections for internet, phone/VOIP, new carpeting and much more.

We are a family-run business that has been around since 1981 and our ideal tenant is another business in the professional services field.



© 2017 CBRE, Inc. All rights reserved. This information has been obtained from sources believed reliable, but has not been verified for accuracy or completeness. Any projections, opinions, or estimates are subject to uncertainty. The information may not represent the current or future performance of the property. You and your advisors should conduct a careful, independent investigation of the property and verify all information. Any reliance on this information is solely at your own risk. CBRE and the CBRE logo are service marks of CBRE, Inc. and/or its affiliated or related companies in the United States and other countries. All other marks displayed on this document are the property of their respective owners. Photos herein are the property of their respective owners and use of these images without the express written consent of the owner is prohibited.