



25 & 16 Main St.  
Roslyn NY, 11576

Iconic Restaurant Available

PARALLEL



Ideally situated on the pond in Historic Roslyn Village, this 270-seat restaurant has been home to the Jolly Fisherman for over 70 years. Roslyn is Long Islands premier dining destination, recent openings include T Bar, Felice, Bond St, Pop-Up Bagel and Van Leeuwen Ice Cream



Bar / Lounge



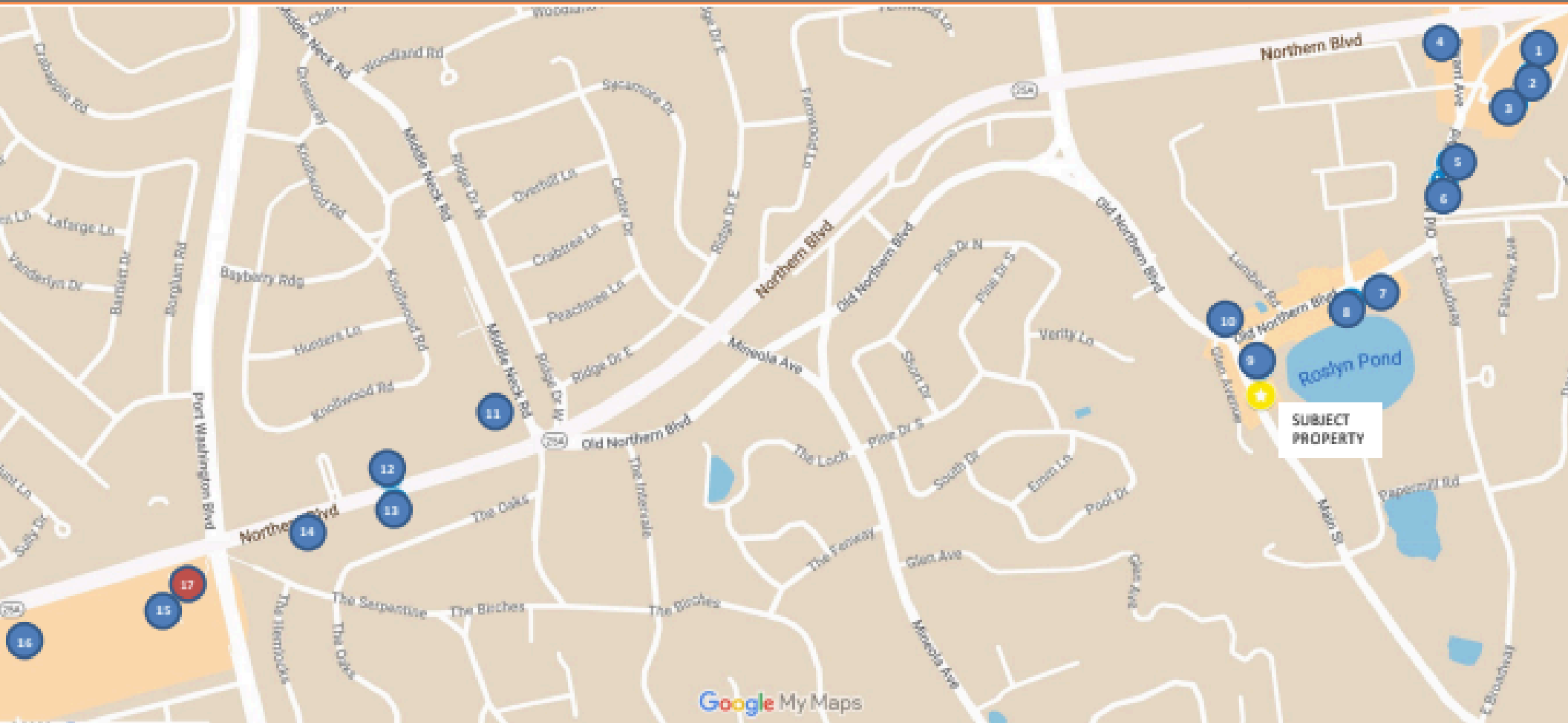
Dining Room 1



Dining Room 2

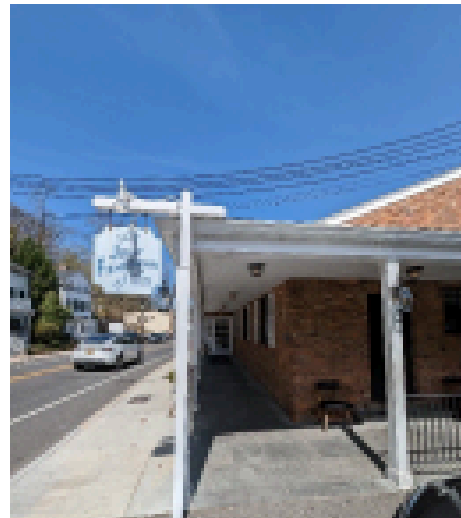


View of Building from Parking Lot



# Vibrant Dining Scene

- |                          |                       |                       |  |
|--------------------------|-----------------------|-----------------------|--|
| 1. Kotobuki              | 7. Felice Roslyn      | 13. Il Mulino         | 17. Americana Manhasset, featuring: Hermes, Gucci, Louis Vuitton, Chanel, Dior, Prada, Tiffany & Co., Cartier, Apple, Tesla, Lucid, Loro Piana, Bottega Veneta and more. |
| 2. Besito                | 8. Gatsby Landing     | 14. Prime 1024        |  |
| 3. Limani Mezze          | 9. Thyme              | 15. Cipollini         |  |
| 4. Diane's Bakery & Cafe | 10. Hendrick's Tavern | 16. Toku Modern Asian |  |
| 5. Kyma                  | 11. Bryant & Cooper   |                       |  |
| 6. La Bottega            | 12. Limani            |                       |  |



Floor Plans & Pricing available upon request

# RETAIL SPACE AVAILABLE

FOR LEASING INQUIRIES, PLEASE CONTACT BROKERS

**Jordan Domroe**

CELL: 646 884 0912

OFFICE: 516 869 9200

**Bradley Diamond**

CELL: 516 606 4656

OFFICE: 516 869 9200

**PARALLEL**