



Prime Location

Explore the Possibilities

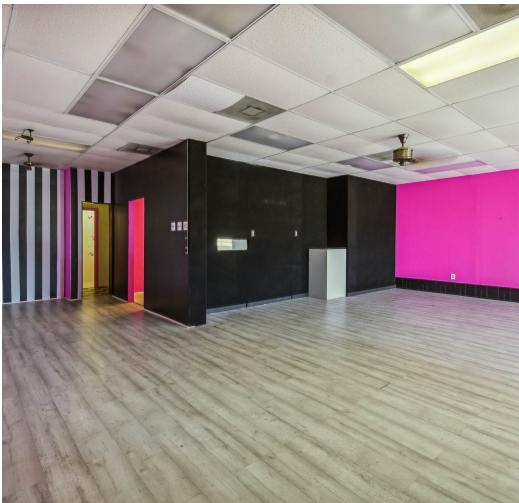
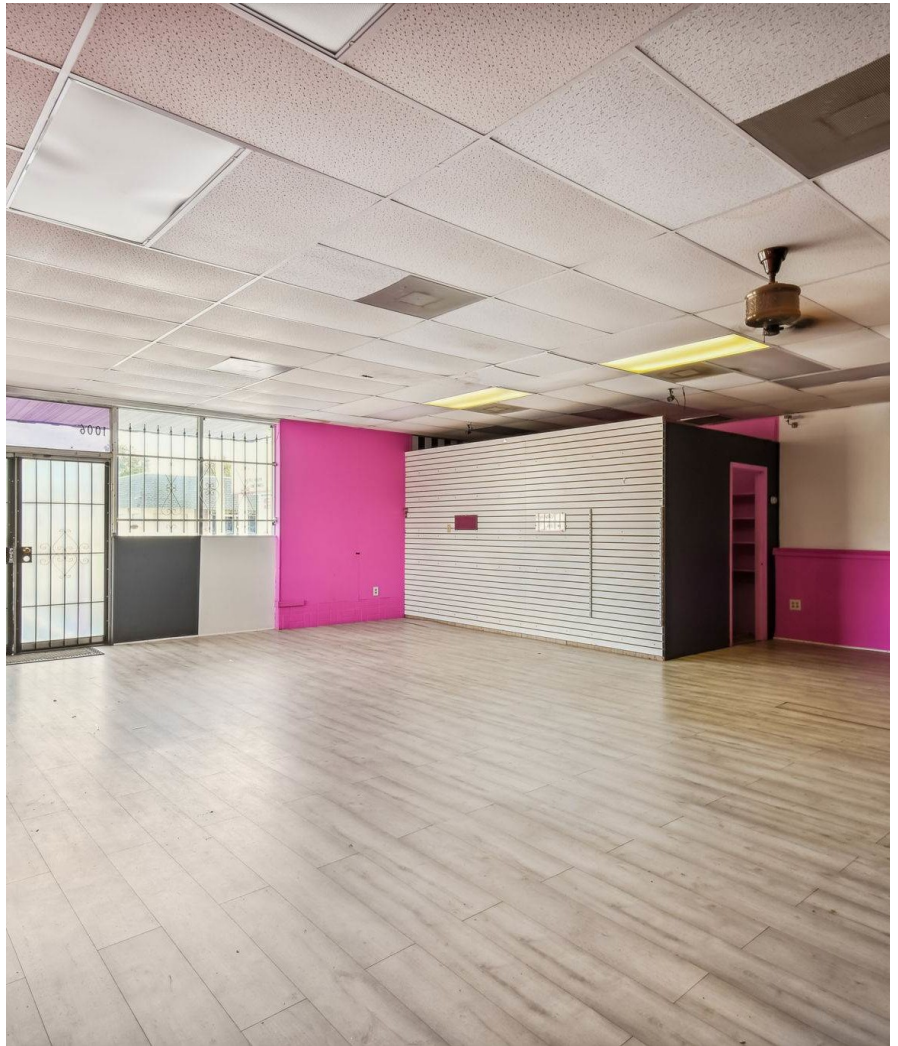


1006 6TH Street NW, Winter Haven, FL 33881

0 Bedrooms | 2 Bathrooms | 1,792 Sq. Ft.

.16 Acres Lot Size | MLS ID: P4923089

\$449,900



One-story 1,581 SF Commercial/Retail building in the City of Winter Haven. Prime corner location with great signage boasts 50 feet of frontage on 6th St NW with 123 feet of frontage on, Ave J NW. The building is Zoned C-3 - Built in 1967 of concrete construction, consists of a Showroom 5 Offices, storage room, break room and 2 restrooms. Paved parking Asphalt and paved parking spaces. 6ft chain length security fence. Front & back entrances. Front entrance has electric security door. Situated a Community Redevelopment Area with a high traffic count. Neighboring businesses include Retail Stores, Fast Food, Motel, Office Buildings, Strip Centers, Restaurants.



Michael and Dee Norris
Broker - Owners
863.875.5583 (Office)
nh@norrisandcompanyrealty.com
michaelanddeenorris.com

NextHome Norris & Company Realty
245 W. Central Avenue, Suite 101
Winter Haven, FL 33880

