

# 2520 COUNTRY CLUB COURT



REDUCED PRICE

FOR SALE OR LEASE



## PROPERTY DETAILS

2520 NORTH UNIVERSITY AVENUE, PROVO, UTAH 84604

- For Sale or Lease
- Sales Price: \$195.00/PSF (\$2,629,770.00)
- Total Building Square Footage: 13,486 SF
- Suites Available For Lease:
  - Suite 202 - 261 sq. ft. \$650.00/month/FS
  - Suite 250 - 2,659 sq. ft. \$16.75/FS
- Building Signage Available
- Walking Distance to BYU and Riverside Country Club Golf Course
- Elevator/ADA compliant
- University Avenue monument signage available (Over 30,000 cars per day)
- Established Professional Office Park
- Furnished executive office



MOUNTAIN WEST  
COMMERCIAL REAL ESTATE

**CODY BLACK, OWNER/AGENT**

cblack@mwcre.com  
direct 801.687.0094

[View Profile](#)

**SHAD WEBB, OWNER/AGENT**

swebb@mwcre.com  
direct 435.459.0212

[View Profile](#)

**NIC WOODS**

nwoods@mwcre.com  
direct 801.719.4309

[View Profile](#)

**FULL SERVICE  
COMMERCIAL REAL ESTATE**

2015 W. Grove Parkway Suite J  
Pleasant Grove, UT 84062

Office 385.233.9140

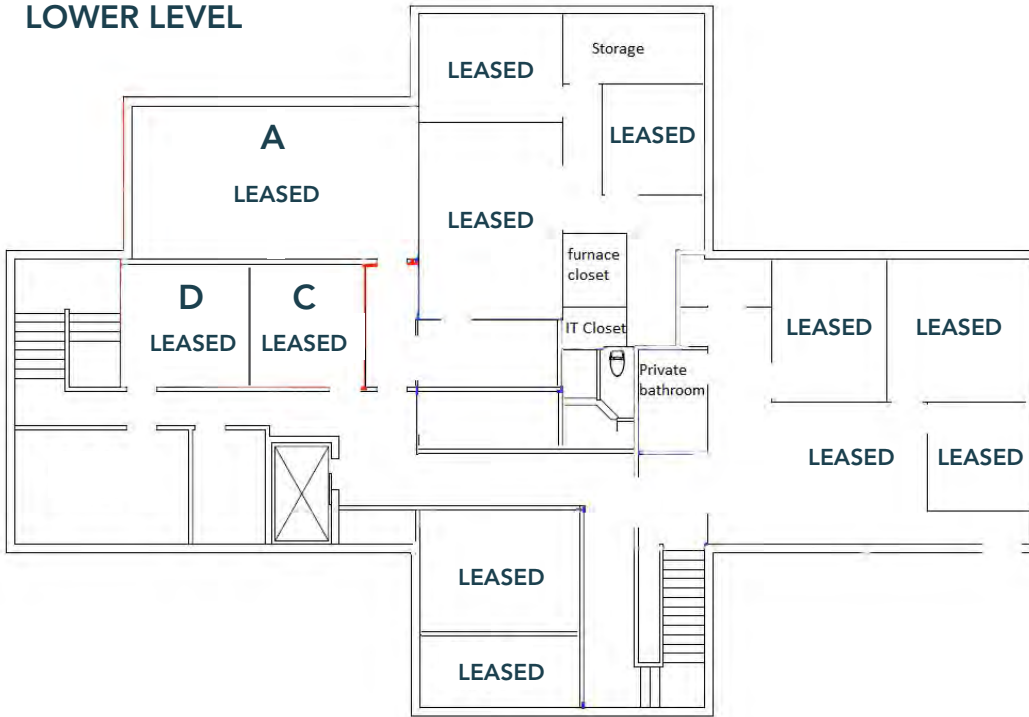
[www.mwcre.com](http://www.mwcre.com)

# 2520 COUNTRY CLUB COURT

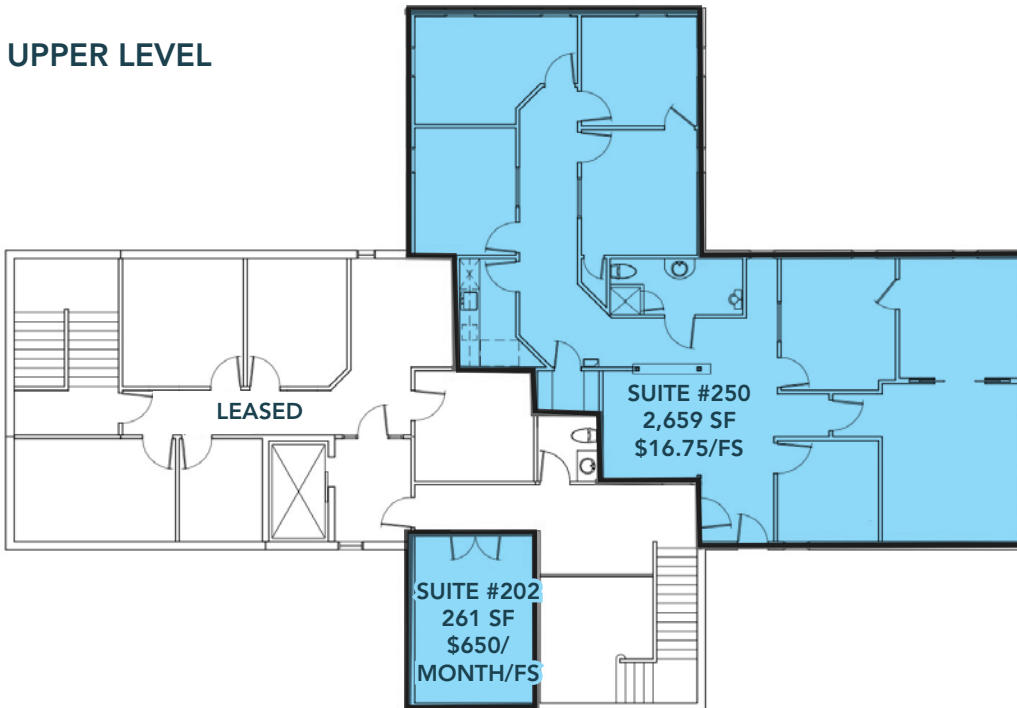


## SITE PLAN

### LOWER LEVEL



### UPPER LEVEL



**MOUNTAIN WEST**  
COMMERCIAL REAL ESTATE

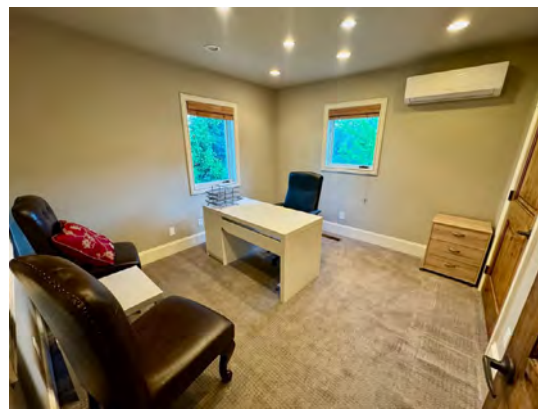
**CODY BLACK, OWNER/AGENT**  
cblack@mwcre.com  
direct 801.687.0094  
[View Profile](#)

**SHAD WEBB, OWNER/AGENT**  
swebb@mwcre.com  
direct 435.459.0212  
[View Profile](#)

**NIC WOODS**  
nwoods@mwcre.com  
direct 801.719.4309  
[View Profile](#)

**FULL SERVICE  
COMMERCIAL REAL ESTATE**  
2015 W. Grove Parkway Suite J  
Pleasant Grove, UT 84062  
Office 385.233.9140  
[www.mwcre.com](http://www.mwcre.com)





**MOUNTAIN WEST**  
COMMERCIAL REAL ESTATE

**CODY BLACK, OWNER/AGENT**

cblack@mwcre.com  
direct 801.687.0094

[View Profile](#)

**SHAD WEBB, OWNER/AGENT**

swebb@mwcre.com  
direct 435.459.0212

[View Profile](#)

**NIC WOODS**

nwoods@mwcre.com  
direct 801.719.4309

[View Profile](#)

**FULL SERVICE  
COMMERCIAL REAL ESTATE**

2015 W. Grove Parkway Suite J  
Pleasant Grove, UT 84062

Office 385.233.9140

[www.mwcre.com](http://www.mwcre.com)





**MOUNTAIN WEST**  
COMMERCIAL REAL ESTATE

**CODY BLACK, OWNER/AGENT**

cblack@mwcre.com  
direct 801.687.0094

[View Profile](#)

**SHAD WEBB, OWNER/AGENT**

swebb@mwcre.com  
direct 435.459.0212

[View Profile](#)

**NIC WOODS**

nwoods@mwcre.com  
direct 801.719.4309

[View Profile](#)

**FULL SERVICE  
COMMERCIAL REAL ESTATE**

2015 W. Grove Parkway Suite J  
Pleasant Grove, UT 84062

Office 385.233.9140

[www.mwcre.com](http://www.mwcre.com)