

# Snider Plaza Office

6801 SNIDER PLAZA  
DALLAS TX 75205

PARK CITIES



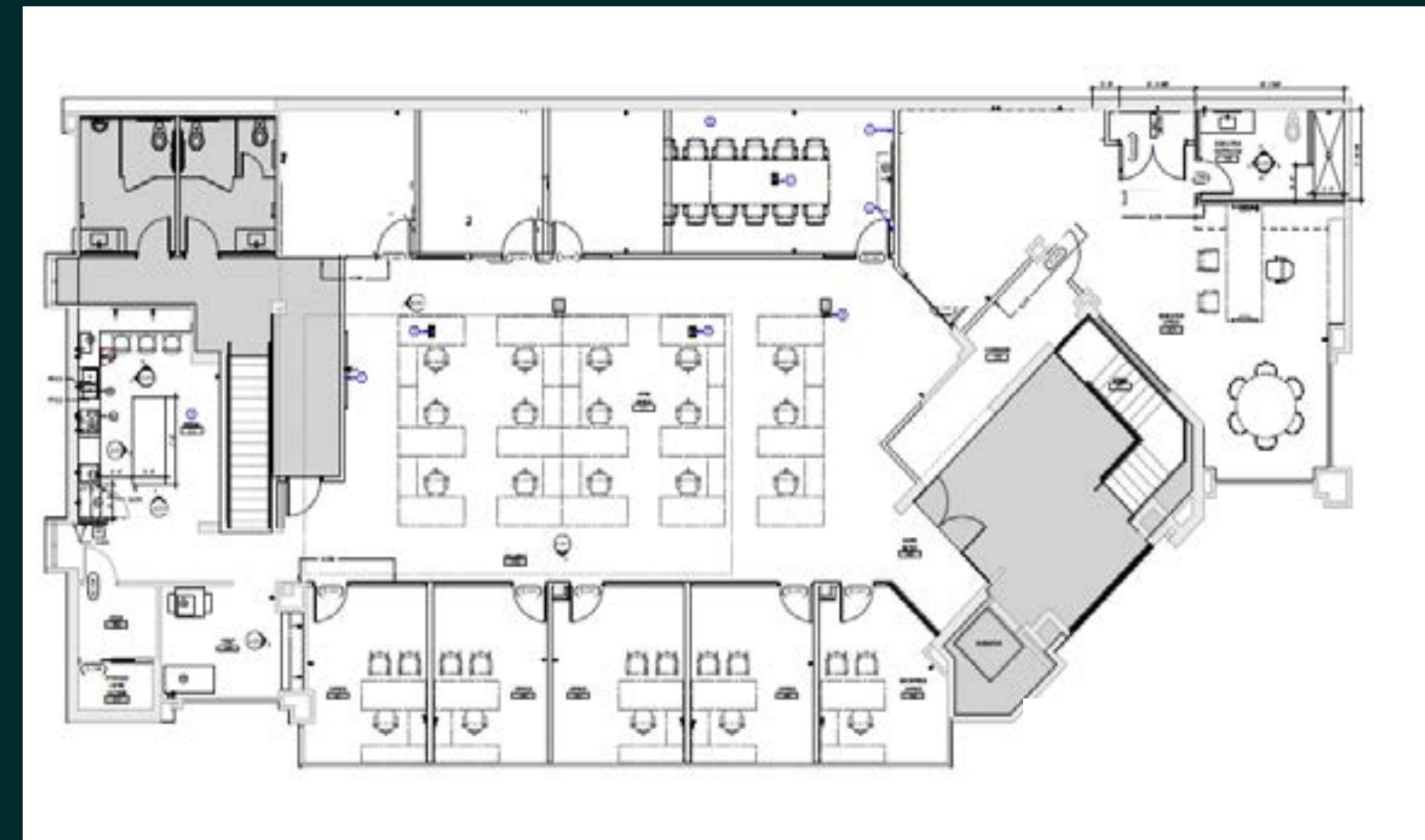
# Sublease Features

For Sublease

- + Suite 200
- + 5,340 RSF
- + **Rate: \$50.00/SF NNN**
- + Flexible Term
- + Brand New Space & Finish
- + Furniture Available
- + Executive Office with En-suite Bath
- + Workstations & Private Offices
- + Conference Room
- + Reception Area with Built-in Desk
- + Kitchen
- + 2.66/1,000 SF Parking Surface



FLOORPLAN





## Snider Plaza

Snider Plaza is located in the heart of Park Cities, Dallas' most prestigious neighborhood. For generations, this family-friendly shopping area is home to over 100 charming boutiques and beloved dining spots. Located conveniently to SMU University as well as surrounding high-end residential.

**Daniel Prescott III**

Senior Associate  
+1 214 979 6143  
daniel.prescott@cbre.com

**Harlan Davis**

Executive Vice President  
+1 214 979 6509  
harlan.davis@cbre.com

© 2024 CBRE, Inc. All rights reserved. This information has been obtained from sources believed reliable, but has not been verified for accuracy or completeness. You should conduct a careful, independent investigation of the property and verify all information. Any reliance on this information is solely at your own risk. CBRE and the CBRE logo are service marks of CBRE, Inc. All other marks displayed on this document are the property of their respective owners, and the use of such logos does not imply any affiliation with or endorsement of CBRE. Photos herein are the property of their respective owners. Use of these images without the express written consent of the owner is prohibited.