

FOR MORE INFORMATION, CONTACT:

James Rogers, SIOR

PRINCIPAL

803.255.8621

JAMES.ROGERS@WILSONKIBLER.COM

William Gregg

SENIOR ASSOCIATE

803.255.8654

WGREGG@WILSONKIBLER.COM

Clay Brabham

BROKER ASSOCIATE | PROPERTY MANAGER

803.767.5776

CBRABHAM@WILSONKIBLER.COM



OFFICE BUILDING FOR LEASE

204 Caughman Farm Lane



PROPERTY SUMMARY



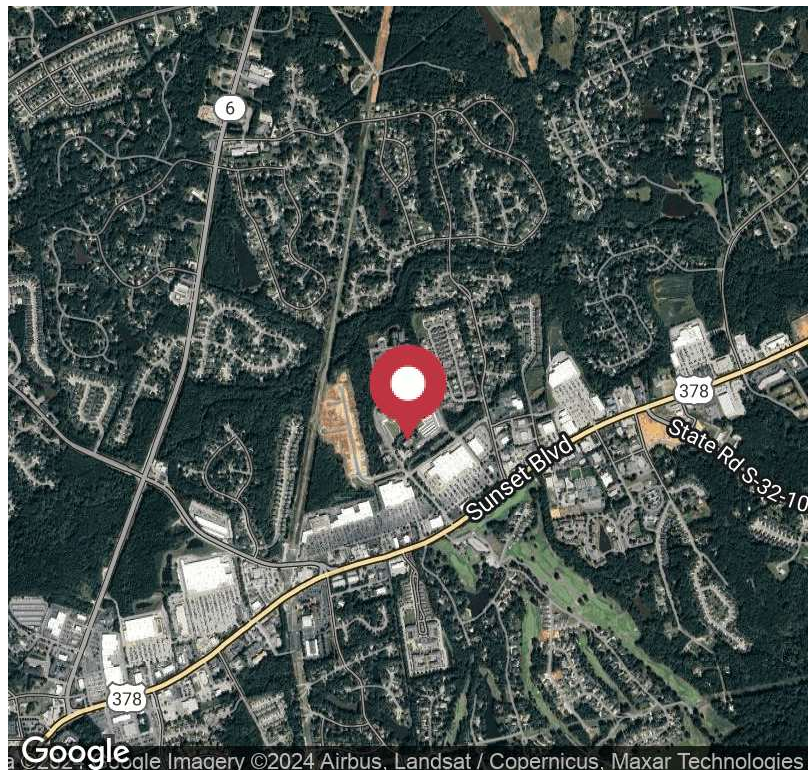
Property Description

Suite 300:
 -2,363 SF
 -8 Offices
 -Bullpen Area
 -Conference Roo
 -Kitchenette

Suite 303:
 -860 SF
 -Kitchenette
 -Bullpen
 -Reception
 -1 Large Office

Offering Summary

Lease Rate:	\$20.00 SF/yr (NNN)
Available SF:	860 - 2,363 SF
Building Size:	3,223 SF



James Rogers, SIOR | Principal | 803.255.8621 | james.rogers@wilsonkibler.com

William Gregg | Senior Associate | 803.255.8654 | wgregg@wilsonkibler.com

Clay Brabham | Broker Associate | Property Manager | 803.767.5776 | cbrabham@wilsonkibler.com

The information contained herein has been obtained from sources we believe to be reliable; however, Wilson Kibler has not conducted any investigation regarding these matters and makes no warranty or representation whatsoever regarding the accuracy or completeness of the information provided.