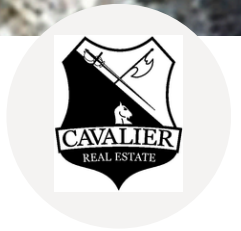




**offered at \$549,900**



**HIGH TRAFFIC SHOVEL  
READY ONE ACRE LOT**

**KYLE TX ETJ WITH COMMERCIAL PLANS**

Shovel Ready, Proposed Retail center, Site plan for 3200 SF commercial building, by request only, Prime location in the ETJ of Kyle, TX. Single family subdivisions surround this property. Call today!

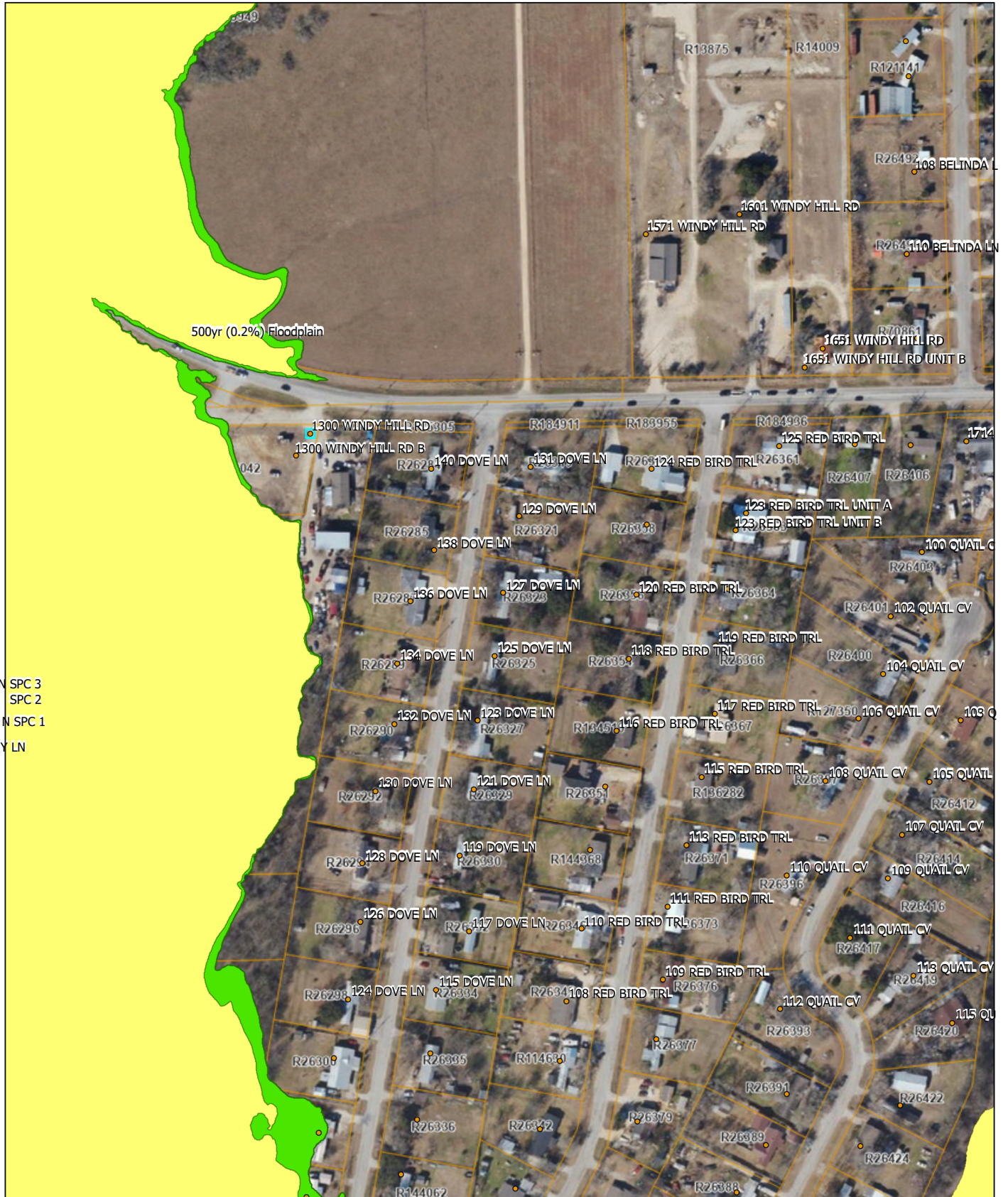


  
**BEE GEE JOHNSON**  
REALTOR

**CONTACT:**

✉ BEEGEEJOHNSON@ME.COM  
☎ 512-520-7321  
♡ BEEGEEJOHNSON.COM

# Hays County Development Services



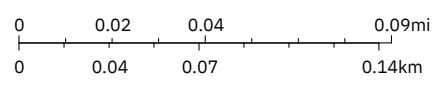
N SPC 3  
 SPC 2  
 N SPC 1  
 Y LN

8/21/2023, 2:37:00 PM

Best Available Floodplain

- 100Yr (1%) Floodplain
- 500yr (0.2%) Floodplain
- HaysCoParcels

1:2,257



Sources: Esri, Airbus DS, USGS, NGA, NASA, CGIAR, N Robinson, NCEAS, NLS, OS, NMA, Geodatasysteisen, Rijkswaterstaat, GSA, Geoland, FEMA, Intermap and the GIS user community, Esri Community Maps Contributors, Austin Community College, City of Austin, Texas Parks & Wildlife, © OpenStreetMap, Microsoft,