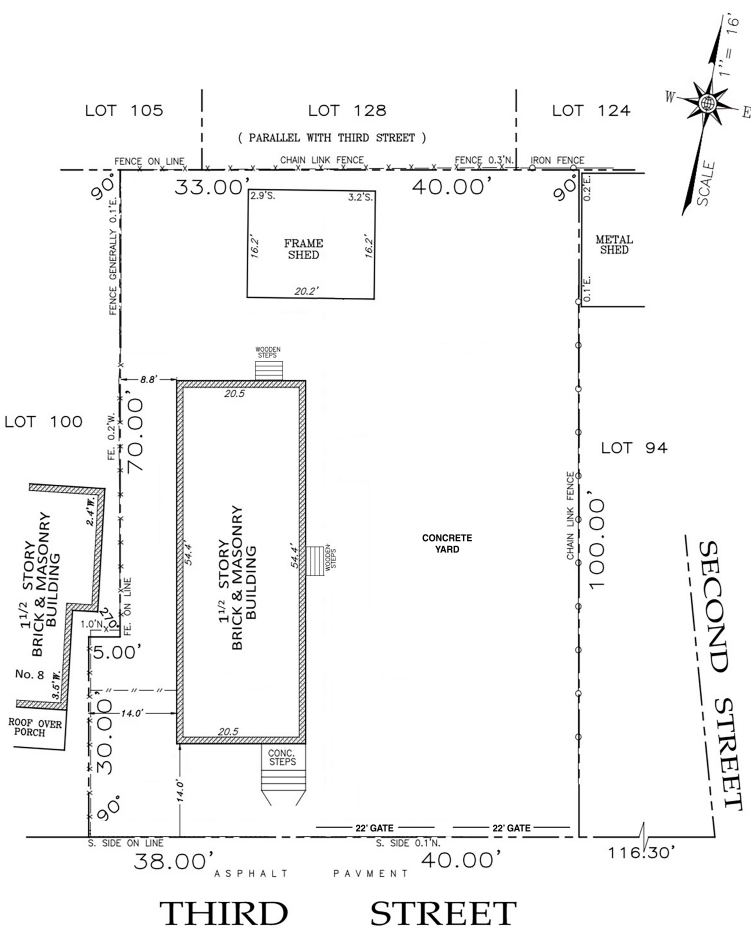


JFK Industrial Yard With Office & Storage

10 3rd Street, Rosedale, Queens 11422



AVAILABLE FOR LEASE



Plot Size	7,450 sf
Office	1,115 sf Ground Floor
Mezzanine	910 sf
Shed/Storage	330 sf
Land	6,005 sf
Zone	M1-1
Utilities	Electric, Gas, Water/Sewer
Completed Improvements	New Chain Link Fence New Slab With Drainage
Possession	On Signing

Kris Jimenez
 Exclusive Agent
 718-729-7474 x120
 KJimenez@DYRealty.com