

THE ROYAL

POINCIANA PLAZA

340-350

ROYAL POINCIANA WAY

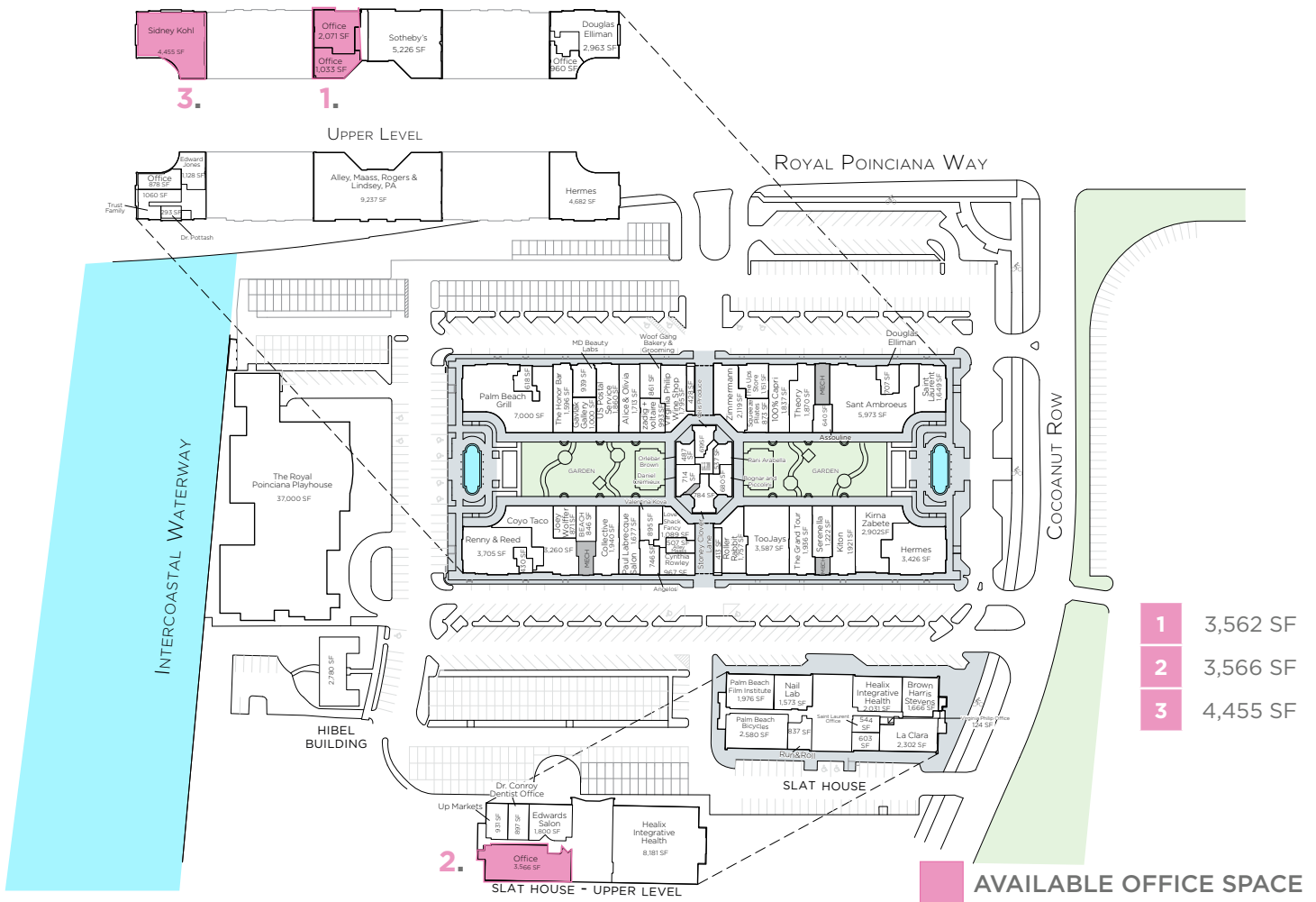
OFFICE SPACE
FOR LEASE



THE ROYAL POINCIANA PLAZA

340-350 ROYAL POINCIANA WAY

The Royal Poinciana Plaza is Palm Beach's largest and most prestigious business center. Nothing compares to the abundant parking, exquisite formal grounds, spectacular views of the Intracoastal Waterway, and its charming 19th century Regency style. All of the facilities are surrounded by lush gardens, manicured lawns, courtyards, and sparkling fountains.



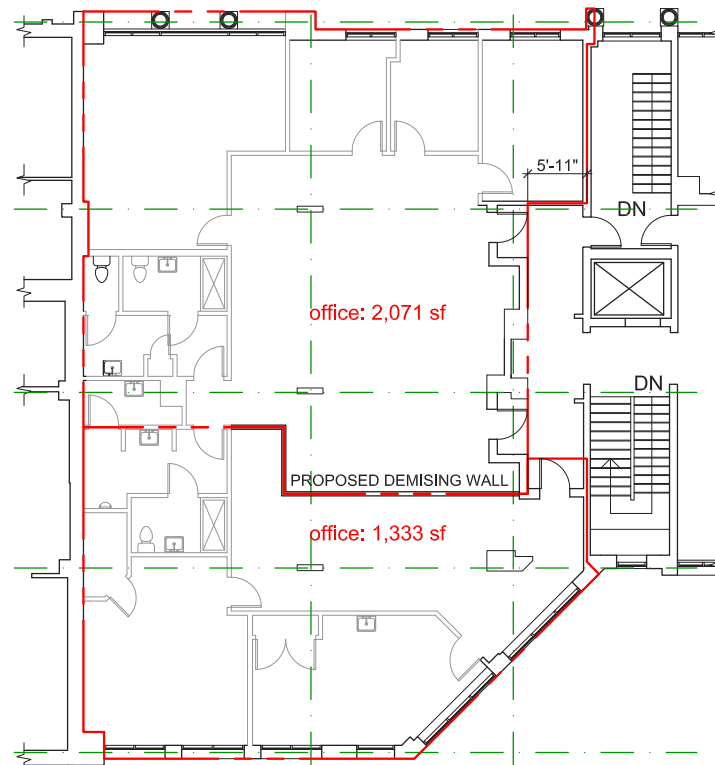
The Royal Poinciana Plaza Key Tenants

Celis Produce	Coya Taco	Palm Beach Grill	Sant Ambroeus	The Honor Bar
TooJay's Gormet Deli	Virginia Philip	Bioage MD & Dr. Dadurian	Edward Fleming Salon	Nail Lab
Paul Labrecque Spa	Squeeze Pilates PB	100% Capri	Angelo's Jewelers	Assouline
Beach	Bognar & Piccolini	Collective	Cremieux	Cynthia Rowley
Fritz Gallery	Hermés	Joey Wölffer	Kirna Zabéte	Orlebar Brown
Palm Beach Bicycle	Pool Lab Show	Rani Arabella	Roller Rabbit	Saint Laurent
Serenella	Theory	Valentina Kova	Vespa Palm Beach	Woof Gang Bakery
Douglas Elliman	Edward Jones	Sotheby's International	US Post Office	The UPS Store



Floor Plan

Suite M316 - 3,562 RSF



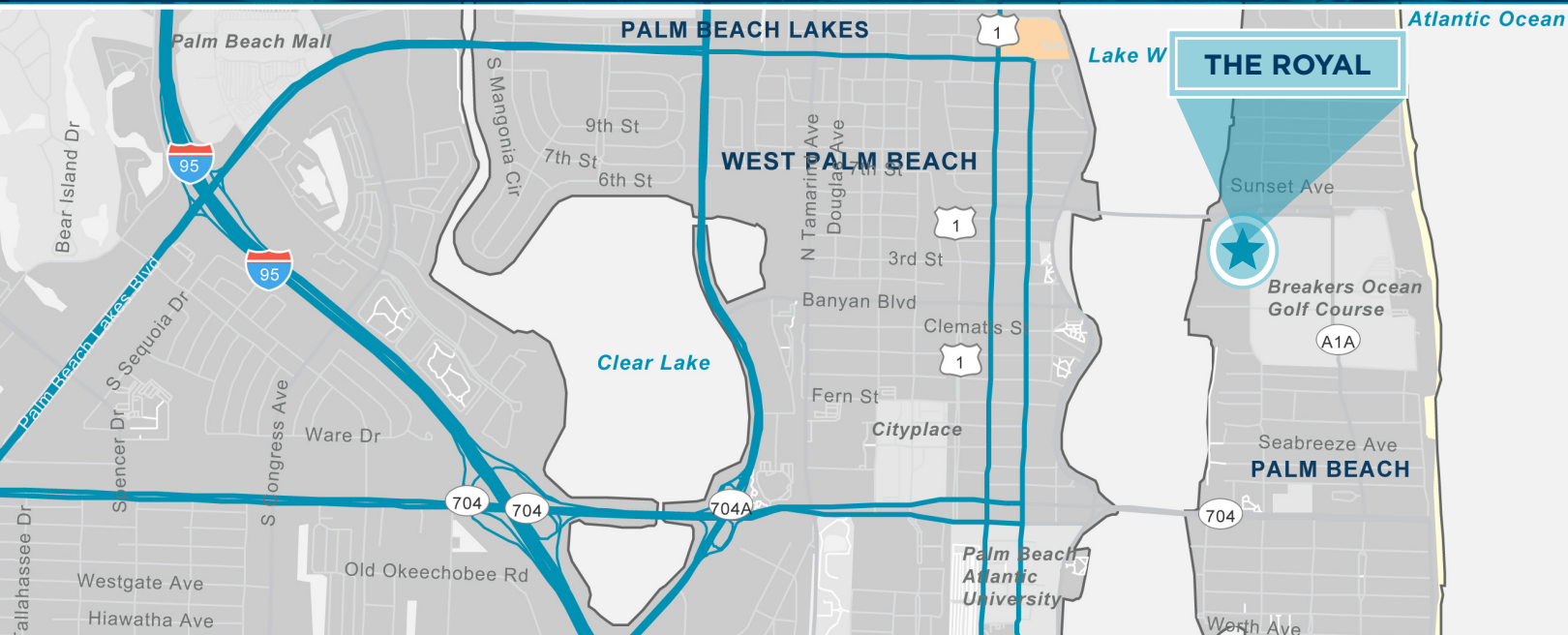
THE ROYAL

POINCIANA PLAZA

340-350

ROYAL POINCIANA WAY

OFFICE SPACE FOR LEASE



Property Highlights

ADDRESS	340-350 Royal Poinciana Way, Palm Beach, FL 33480
AVAILABLE SQFT	±920-4,455 RSF
OPEX	\$24.00/SF

LEASE RATE: UPON REQUEST

Location Features

- Complimentary Valet Parking
- One of a kind office space with the best amenities and dining options in Palm Beach
- Unparalleled location one block from the ocean in the heart of the Island
- Super luxury brands in mixed use lifestyle center
- On-site management

FOR ADDITIONAL INFORMATION, CONTACT:

Michael Osiecki
Senior Associate
+1 561 227 2060
michael.osiecki@cushwake.com

Mark Pateman
Managing Principal
+1 561 227 2020
mark.pateman@cushwake.com

 **CUSHMAN & WAKEFIELD**
225 NE Mizner Blvd, Suite 300
Boca Raton, FL 33432 | USA
cushmanwakefield.com