

FOR LEASE  
PROFESSIONAL OFFICE



2485 E SOUTHLAKE BLVD, SOUTHLAKE, TX

BROKER CONTACTS

**Eric Goodwin**

Senior Vice President  
817.991.9478  
eric@championsdfw.com

**Grant Goodwin**

Associate  
972.632.9608  
grant@championsdfw.com

**Jim Kelley**

Principal/Broker  
817.909.7875  
jim@championsdfw.com





# PROPERTY INFORMATION



## Property Highlights

- ±1,445 - 5,289 SF
- Professional Office Space
- 2nd Generation Space
- Generous Parking
- Walking distance to Retail/Restaurants
- Covered Parking
- Move-In Ready
- Near Southlake Blvd. & Kimball Ave

## Lease Spaces

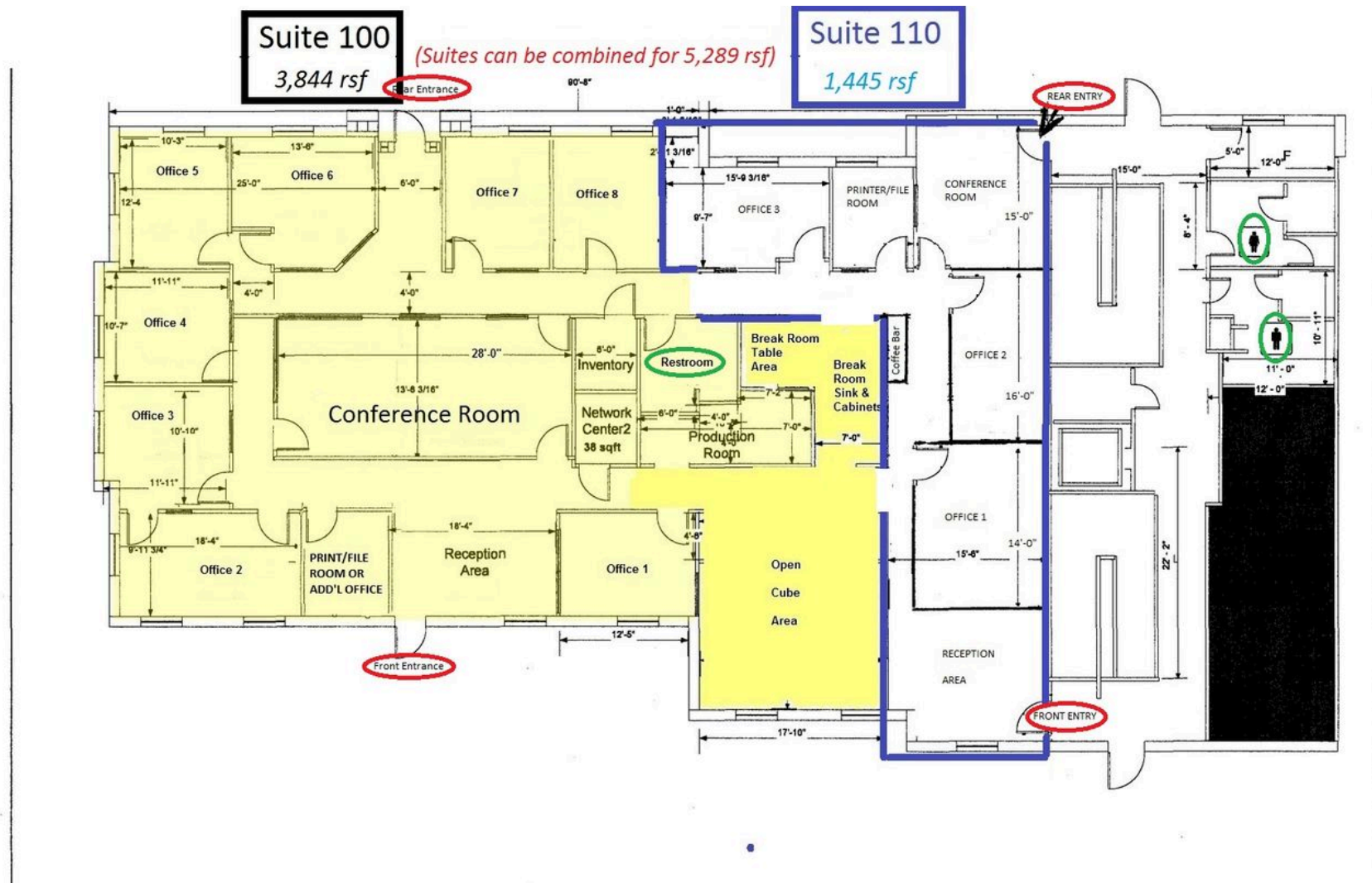
Spaces	Lease Rate	Space Size	Lease Type	Description
Suite 100	\$19.50/SF/Year	3,844 sqft	NNN	Can be combined with Suite 110
Suite 110	\$19.50/SF/Year	1,445 sqft	NNN	Can be combined with Suite 100
Suite 220	\$19.50/SF/Year	2,135 sqft	NNN	

Champions DFW Commercial Realty  
880 S Village Center Dr., Suite 200, Southlake, TX 76092

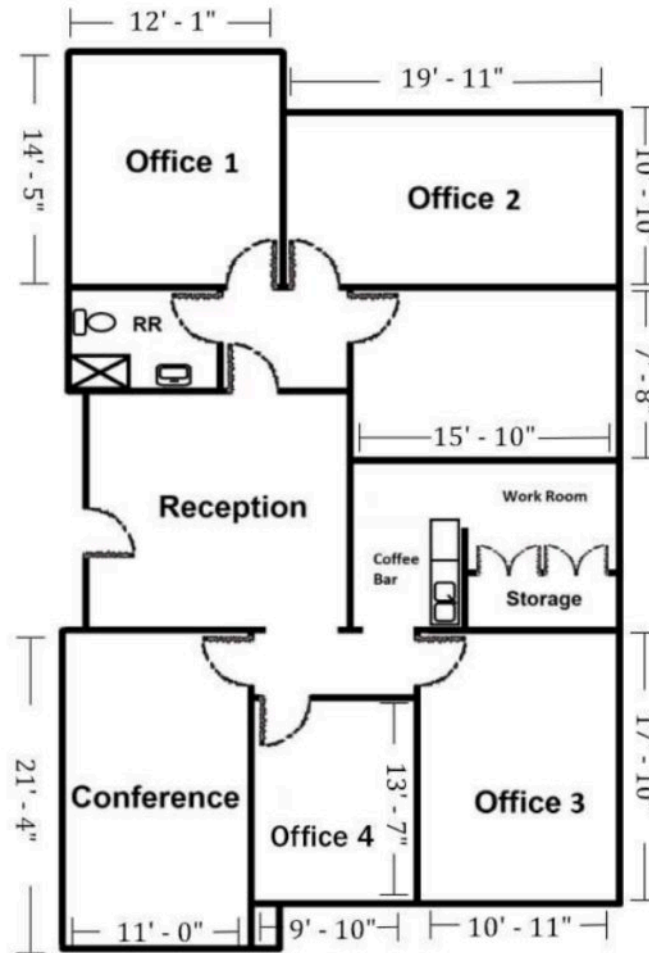
©2025 Champions DFW Commercial Realty LLC.  
All rights reserved. The information contained herein was obtained from sources believed to be reliable. It is subject to verification. The presentation of this property is submitted subject to errors, omissions, change of price or conditions, prior to sale or lease, or withdrawal without notice.



## FLOOR PLAN - SUITE 320



# FLOOR PLAN - SUITE 220



Champions DFW Commercial Realty  
880 S Village Center Dr., Suite 200, Southlake, TX 76092

©2025 Champions DFW Commercial Realty LLC.  
All rights reserved. The information contained herein was obtained from sources believed to be reliable. It is subject to verification. The presentation of this property is submitted subject to errors, omissions, change of price or conditions, prior to sale or lease, or withdrawal without notice.



# PROPERTY PHOTOS



Champions DFW Commercial Realty  
880 S Village Center Dr., Suite 200, Southlake, TX 76092

©2025 Champions DFW Commercial Realty LLC.

All rights reserved. The information contained herein was obtained from sources believed to be reliable. It is subject to verification. The presentation of this property is submitted subject to errors, omissions, change of price or conditions, prior to sale or lease, or withdrawal without notice.





# PROPERTY PHOTOS - SUITE 100



Champions DFW Commercial Realty  
880 S Village Center Dr., Suite 200, Southlake, TX 76092

©2025 Champions DFW Commercial Realty LLC.  
All rights reserved. The information contained herein was obtained from sources believed to be reliable. It is subject to verification. The presentation of this property is submitted subject to errors, omissions, change of price or conditions, prior to sale or lease, or withdrawal without notice.



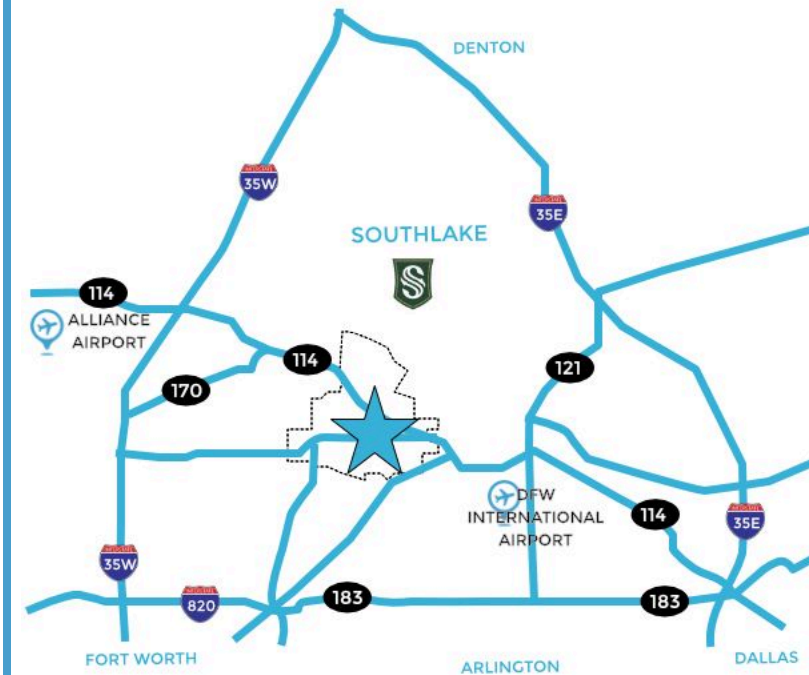
# DEMOGRAPHICS

## Population

	2 miles	5 miles	10 miles
2020 Population	29,576	122,544	812,350
2024 Population	29,357	124,404	830,960
2029 Population Projection	30,786	131,765	895,456
Annual Growth 2020-2024	-0.2%	0.4%	0.6%
Annual Growth 2024-2029	1.0%	1.2%	1.6%
Median Age	39.4	41.9	38.1
Bachelor's Degree or Higher	50%	58%	46%
U.S. Armed Forces	0	10	450

Avg Household Income	\$142,767	\$165,382	\$122,901
Median Household Income	\$99,569	\$136,015	\$93,253
< \$25,000	891	2,764	26,038
\$25,000 - 50,000	1,531	4,529	49,086
\$50,000 - 75,000	1,829	5,330	50,009
\$75,000 - 100,000	1,279	4,568	41,824
\$100,000 - 125,000	956	4,095	33,791
\$125,000 - 150,000	493	3,536	25,753
\$150,000 - 200,000	1,113	5,921	32,514
\$200,000+	2,924	14,945	52,326







## Information About Brokerage Services

Texas law requires all real estate license holders to give the following information about brokerage services to prospective buyers, tenants, sellers and landlords.

2-10-2025



### TYPES OF REAL ESTATE LICENSE HOLDERS:

- **A BROKER** is responsible for all brokerage activities, including acts performed by sales agents sponsored by the broker.
- **A SALES AGENT** must be sponsored by a broker and works with clients on behalf of the broker.

### A BROKER'S MINIMUM DUTIES REQUIRED BY LAW (A client is the person or party that the broker represents):

- Put the interests of the client above all others, including the broker's own interests;
- Inform the client of any material information about the property or transaction received by the broker;
- Answer the client's questions and present any offer to or counter-offer from the client; and
- Treat all parties to a real estate transaction honestly and fairly.

### A LICENSE HOLDER CAN REPRESENT A PARTY IN A REAL ESTATE TRANSACTION:

**AS AGENT FOR OWNER (SELLER/LANDLORD):** The broker becomes the property owner's agent through an agreement with the owner, usually in a written listing to sell or property management agreement. An owner's agent must perform the broker's minimum duties above and must inform the owner of any material information about the property or transaction known by the agent, including information disclosed to the agent or subagent by the buyer or buyer's agent. An owner's agent fees are not set by law and are fully negotiable.

**AS AGENT FOR BUYER/TENANT:** The broker becomes the buyer/tenant's agent by agreeing to represent the buyer, usually through a written representation agreement. A buyer's agent must perform the broker's minimum duties above and must inform the buyer of any material information about the property or transaction known by the agent, including information disclosed to the agent by the seller or seller's agent. A buyer/tenant's agent fees are not set by law and are fully negotiable.

**AS AGENT FOR BOTH - INTERMEDIARY:** To act as an intermediary between the parties the broker must first obtain the written agreement of each party to the transaction. The written agreement must state who will pay the broker and, in conspicuous bold or underlined print, set forth the broker's obligations as an intermediary. A broker who acts as an intermediary:

- · Must treat all parties to the transaction impartially and fairly;
- · May, with the parties' written consent, appoint a different license holder associated with the broker to each party (owner and buyer) to communicate with, provide opinions and advice to, and carry out the instructions of each party to the transaction.
- · Must not, unless specifically authorized in writing to do so by the party, disclose:
  - ¶ that the owner will accept a price less than the written asking price;
  - ¶ that the buyer/tenant will pay a price greater than the price submitted in a written offer; and
  - ¶ any confidential information or any other information that a party specifically instructs the broker in writing not to disclose, unless required to do so by law.

**AS SUBAGENT:** A license holder acts as a subagent when aiding a buyer in a transaction without an agreement to represent the buyer. A subagent can assist the buyer but does not represent the buyer and must place the interests of the owner first.

### TO AVOID DISPUTES, ALL AGREEMENTS BETWEEN YOU AND A BROKER SHOULD BE IN WRITING AND CLEARLY ESTABLISH:

- The broker's duties and responsibilities to you, and your obligations under the representation agreement.
- Who will pay the broker for services provided to you, when payment will be made and how the payment will be calculated.

**LICENSE HOLDER CONTACT INFORMATION:** This notice is being provided for information purposes. It does not create an obligation for you to use the broker's services. Please acknowledge receipt of this notice below and retain a copy for your records.

**LICENSE HOLDER CONTACT INFORMATION:** This notice is being provided for information purposes. It does not create an obligation for you to use the broker's services. Please acknowledge receipt of this notice below and retain a copy for your records.

Champions DFW Commercial Realty, LLC	584733	jim@championsdfw.com	817.488.4333
Licensed Broker /Broker Firm Name or Primary Assumed Business Name	License No.	Email	Phone
Jim Kelley	545842	jim@championsdfw.com	817.488.4333
Designated Broker of Firm	License No.	Email	Phone
Licensed Supervisor of Sales Agent/ Associate	License No.	Email	Phone
Sales Agent/ Associate Name	License No.	Email	Phone



## ABOUT CHAMPIONS DFW COMMERCIAL REALTY

Champions DFW Commercial Realty, LLC is a full service brokerage commercial real estate company providing the highest level of strategy, services and solutions to our clients.

At Champions DFW Commercial Realty, LLC, we pride ourselves in championing your Dallas/Fort Worth commercial real estate cause. Headquartered in Southlake, Texas, we are a team of knowledgeable and highly motivated professionals whose objective is to help you succeed in all your commercial real estate endeavors.

## OUR SERVICES

- Commercial Leasing
- Commercial Sales
- Investment Sales
- Tenant/Buyer Representation
- Development/Advisory Services
- Commercial Property Management

## BROKER CONTACTS

### Eric Goodwin

Senior Vice President  
214.642.8928  
eric@championsdfw.com

### Grant Goodwin

Associate  
972.632.9608  
grant@championsdfw.com

### Jim Kelley

Principal/Broker  
817.488.4333  
jim@championsdfw.com

Champions DFW Commercial Realty  
880 S Village Center Dr., Suite 200, Southlake, TX 76092

©2025 Champions DFW Commercial Realty LLC.

All rights reserved. The information contained herein was obtained from sources believed to be reliable. It is subject to verification. The presentation of this property is submitted subject to errors, omissions, change of price or conditions, prior to sale or lease, or withdrawal without notice.

