

PROPERTY FEATURES



LOT SIZE

± 8.55 Acres (± 372,438 SF)



PARCELS

APN'S: 0459-241-34-0000



ZONING

Zoning (BP) Business Park per the City of Adelanto, CA.

PROPERTY HIGHLIGHTS

- Corner Lot
- Flat Topography
- Rectangular Lot
- Minutes from So Cal Logistics Airport & George AFB
- Close proximity to the US395 Highway



INLAND EMPIRE

CAL DRE # 02120868

KW COMMERCIAL
3595-1 Inland Empire Blvd. Suite 1250
Ontario, CA 91764
909.980.6868



Air Expy

Pearmain St.

FOR SALE

AIR EXPRESSWAY BLVD.,
ADELANTO, CA 92301

SELLER FINANCING AVAILABLE

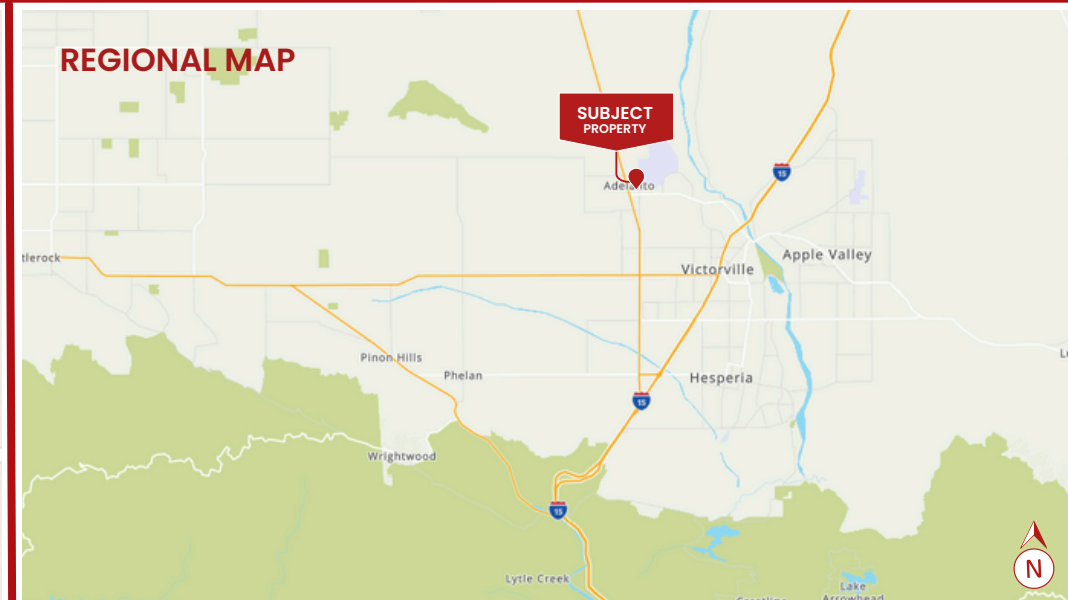
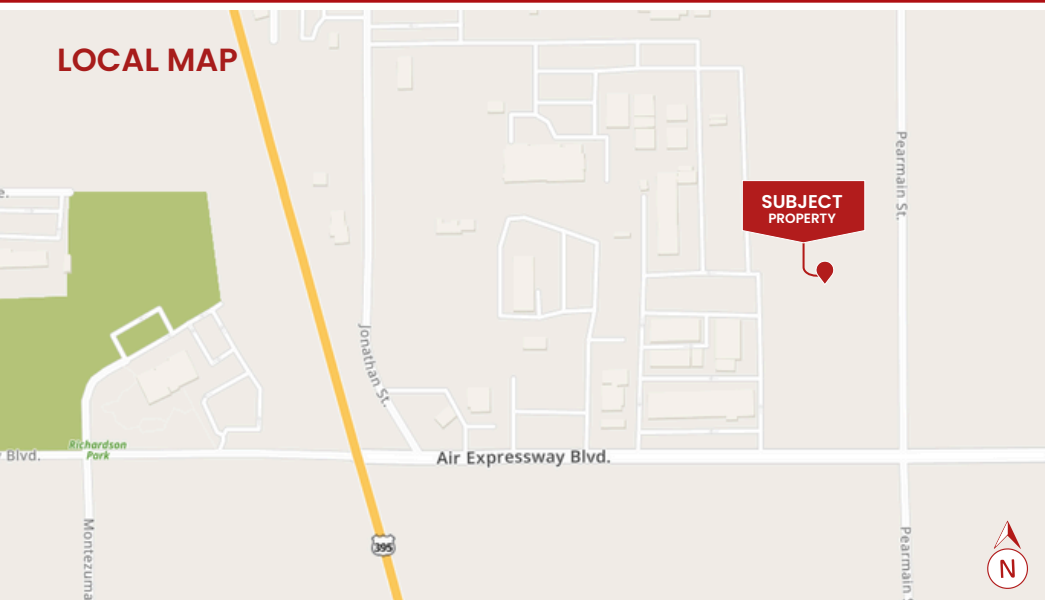
"Happy" Raj Singh
909.935.0931

Raj.singh@kwcommercial.com
CalDRE Lic. #02199675

Rene Ramos, Jr.
909.980.6868

Rene.Ramos@kwcommercial.com
CalDRE Lic. #01836872

WE OBTAINED THE INFORMATION ABOVE FROM SOURCES WE BELIEVE TO BE RELIABLE. HOWEVER, WE HAVE NOT VERIFIED ITS ACCURACY AND MAKE NO GUARANTEE, WARRANTY, OR REPRESENTATION ABOUT IT. IT IS SUBMITTED SUBJECT TO THE POSSIBILITY OF ERRORS, OMISSIONS, CHANGE OF PRICE, RENTAL OR OTHER CONDITIONS, PRIOR SALE, LEASE OR FINANCING, OR WITHDRAWAL WITHOUT NOTICE. WE INCLUDE PROJECTIONS, OPINIONS, ASSUMPTIONS OR ESTIMATES FOR EXAMPLE ONLY, AND THEY MAY NOT REPRESENT CURRENT OR FUTURE PERFORMANCE OF THE PROPERTY. YOU AND YOUR TAX AND LEGAL ADVISORS SHOULD CONDUCT YOUR OWN INVESTIGATION OF THE PROPERTY AND TRANSACTION.



"Happy" Raj Singh
909.935.0931
Raj.singh@kwcommercial.com
CalDRE Lic. #02199675

Rene Ramos, Jr.
909.980.6868
Rene.Ramos@kwcommercial.com
CalDRE Lic. #01836872



INLAND
EMPIRE

CAL DRE # 02120868



Pearmain St.

Air Expy



"Happy" Raj Singh
909.935.0931
Raj.singh@kwcommercial.com
CalDRE Lic. #02199675

Rene Ramos, Jr.
909.980.6868
Rene.Ramos@kwcommercial.com
CalDRE Lic. #01836872



INLAND
EMPIRE

CAL DRE # 02120868

PLAT MAP

AIR EXPRESSWAY BLVD., ADELANTO, CA 92301

THIS MAP IS FOR THE PURPOSE OF AD VALOREM TAXATION ONLY.

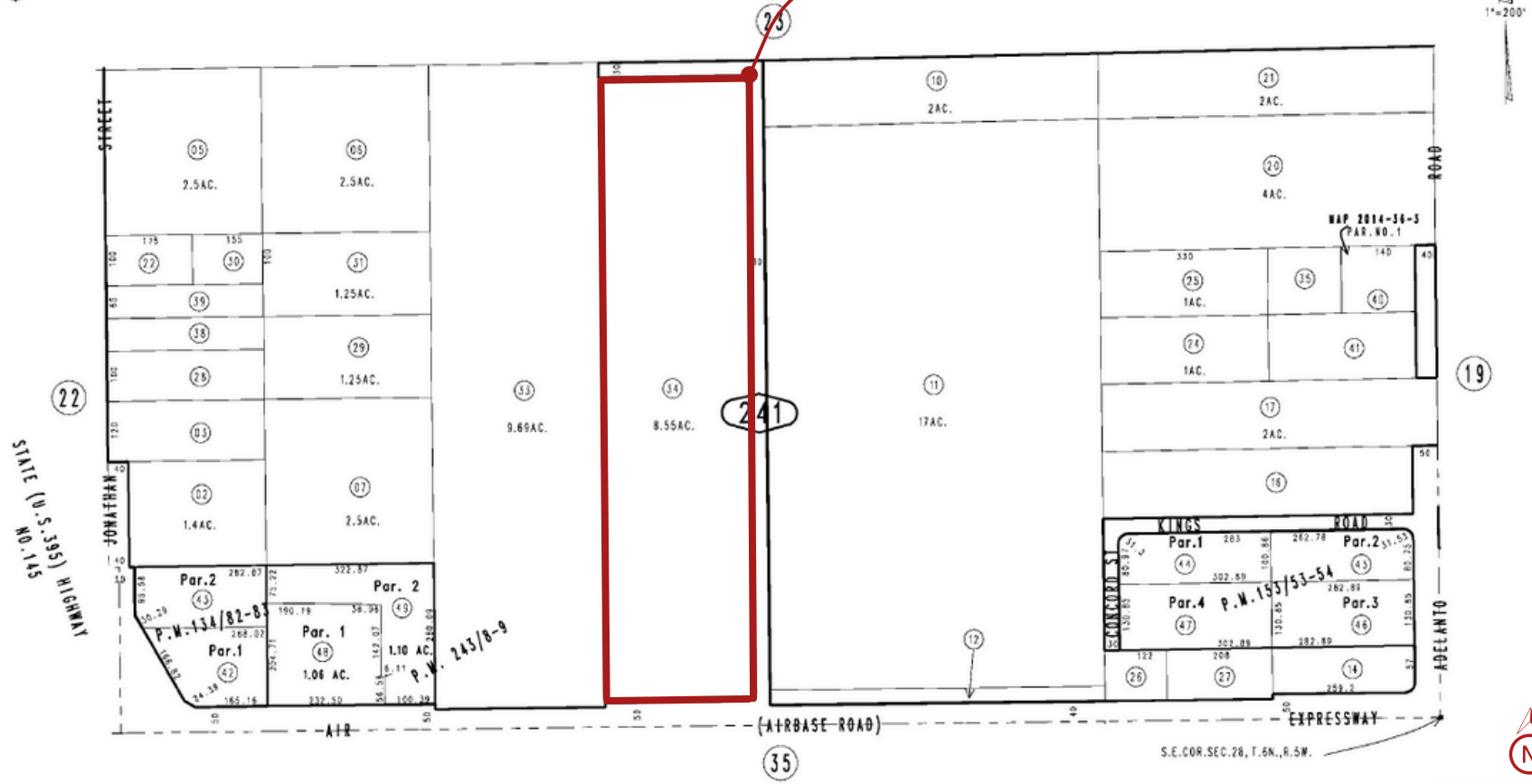


South 1/2 S.E.1/4, Sec.28, T.6N.,R.5W., S.B.B.&M.

City of Adelanto
Tax Rate Area
047

0459-24

Air Expressway Blvd.,
Adelanto, CA 92301



STATE (U.S. 95) HIGHWAY
NO. 145

Parcel Map No. 19554, P.W. 243/8-9
Parcel Map No. 13547, P.W. 153/53-54
Parcel Map No. 11627, P.W. 134/82-83

Assessor's Map
Book 0459 Page 24
San Bernardino County

REVISED
11/12/14 RM

November 2003

"Happy" Raj Singh
909.935.0931
Raj.singh@kwcommercial.com
CalDRE Lic. #02199675

Rene Ramos, Jr.
909.980.6868
Rene.Ramos@kwcommercial.com
CalDRE Lic. #01836872



CAL DRE # 02120868