

REDEVELOPMENT OPPORTUNITY

5829 SUMMER AVE, MEMPHIS, TN 38134

FOR LEASE



LOCATION DESCRIPTION

Restaurant building located on the southwest corner of Summer Avenue and Sycamore View half a mile from Interstate 40 in Memphis, Tennessee

PROPERTY HIGHLIGHTS

- 1.44 acres available for Ground Lease
- High traffic corner
- Great for fast food, car wash or convenience store
- Traffic Counts (AADT): Summer Ave 19,248 and Sycamore View 29,863



DEMOGRAPHICS	1 MILE	3 MILES	5 MILES
Population	7,314	71,040	192,590
Daytime Population	10,555	68,974	219,030
Households	3,332	27,215	77,555
Average HH Income	\$57,155	\$78,118	\$98,854



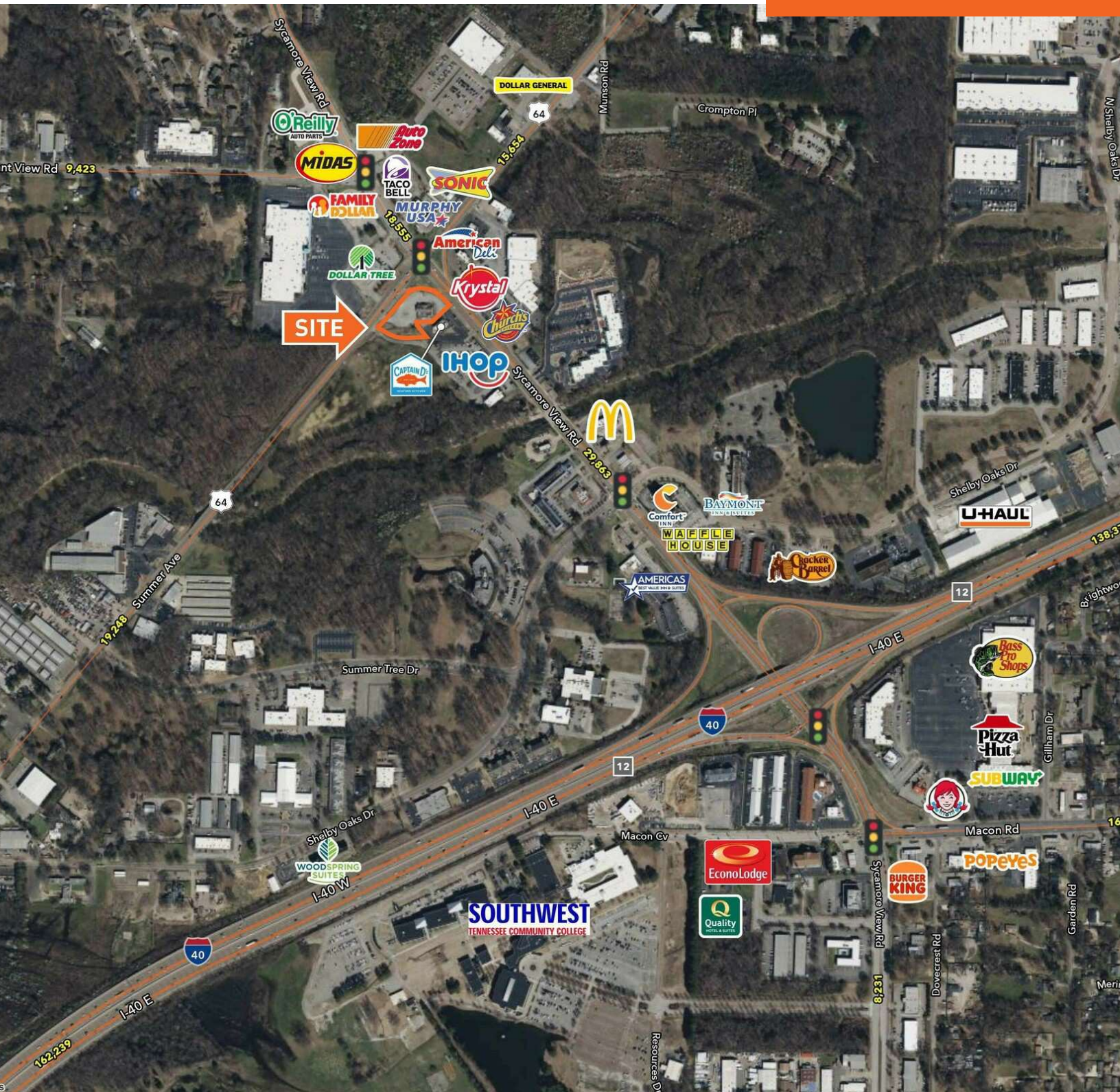
ROBERT SLOAN
robert.sloan@tscg.com
901.334.5703

DANNY BURING
danny.buring@tscg.com
901.334.5701

REDEVELOPMENT OPPORTUNITY

5829 SUMMER AVE, MEMPHIS, TN 38134

FOR LEASE



ROBERT SLOAN

robert.sloan@tscg.com
901.334.5703

DANNY BURING

danny.buring@tscg.com
901.334.5701