



DIVIDEND INDUSTRIAL

INDUSTRIAL PROPERTY FOR LEASE/SUBLEASE | 240 DIVIDEND DR | REXBURG, ID 83440



CONTACT

BRIAN WILSON, CCIM

208.656.2271
brian@tokcommercial.com

BRENT WILSON, CLS

208.656.2270
brent@tokcommercial.com

HIGHLIGHTS

Excellent proximity to Highway 20, offering efficient regional connectivity.

Paved, secured yard ideal for outdoor storage or fleet operations.

Robust power availability to support a wide range of industrial uses.

Free-span warehouse layout maximizing usable floor space.

Abundant on-site parking with 49 dedicated spaces.

DETAILS

TOTAL AVAILABLE SPACE:	6,500 SF
SPACE BREAKOUT:	500 SF Office 6,000 SF Whse
LEASE RATE:	Contact Agent (NNN)
CLEAR HEIGHT:	14'
GRADE DOORS:	1, 12' x 12'
DOCK DOORS:	1, 12' x 12'
POWER:	Three Phase, 240V
ZONING:	CBC

UPDATED: DECEMBER 04, 2025

THIS PROPERTY IS EXCLUSIVELY MARKETING BY TOK EASTERN IDAHO LLC DBA TOK COMMERCIAL

This information was obtained from sources believed reliable but cannot be guaranteed. Any opinions or estimates are used for example only.

TokCOMMERCIAL.COM



UPDATED: DECEMBER 04, 2025

THIS PROPERTY IS EXCLUSIVELY MARKETING BY TOK EASTERN IDAHO LLC DBA TOK COMMERCIAL

This information was obtained from sources believed reliable but cannot be guaranteed. Any opinions or estimates are used for example only.

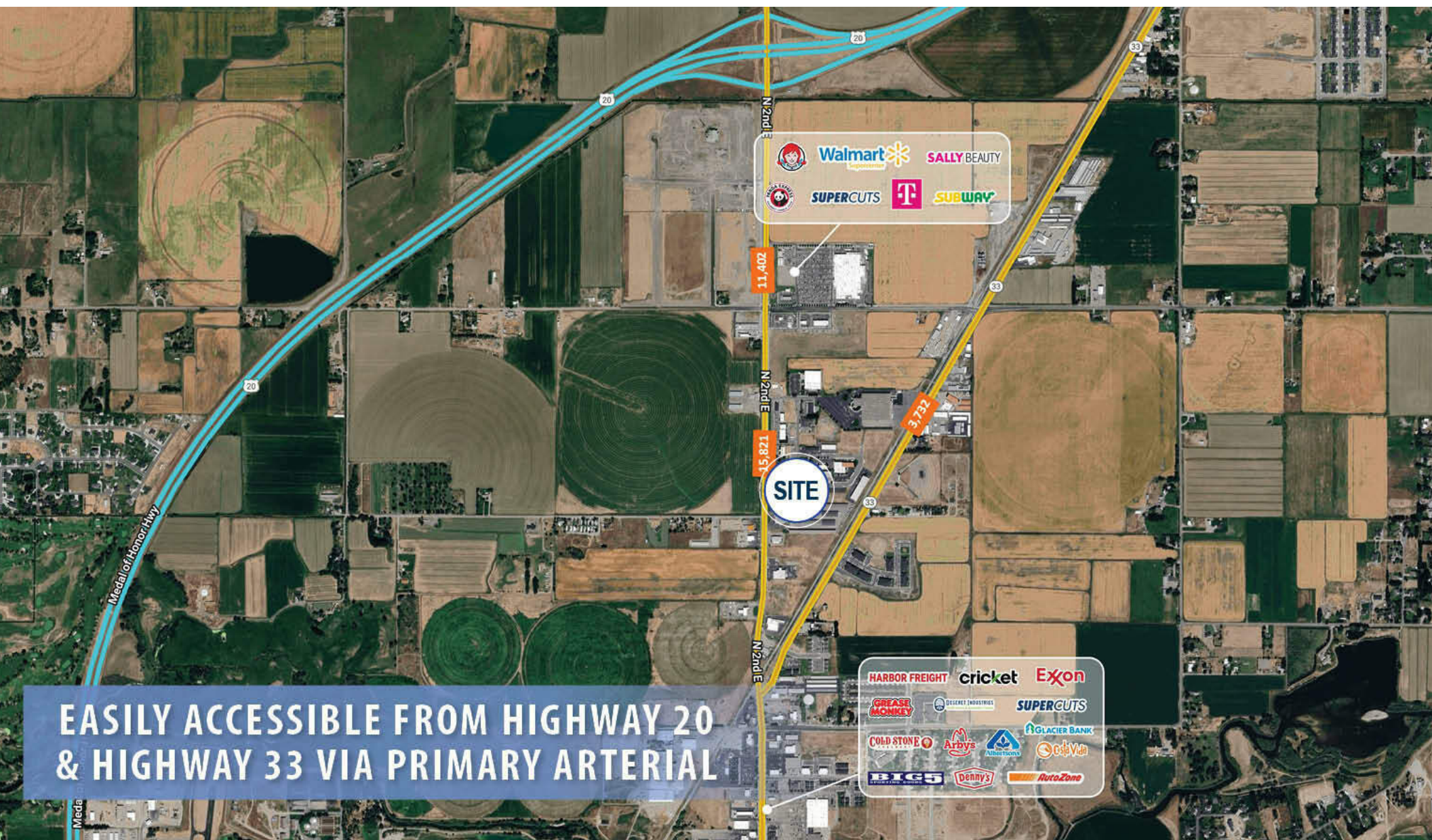
DESIRABLE PAVED, SECURED YARD SPACE



UPDATED: DECEMBER 04, 2025

THIS PROPERTY IS EXCLUSIVELY MARKETING BY TOK EASTERN IDAHO LLC DBA TOK COMMERCIAL

This information was obtained from sources believed reliable but cannot be guaranteed. Any opinions or estimates are used for example only.

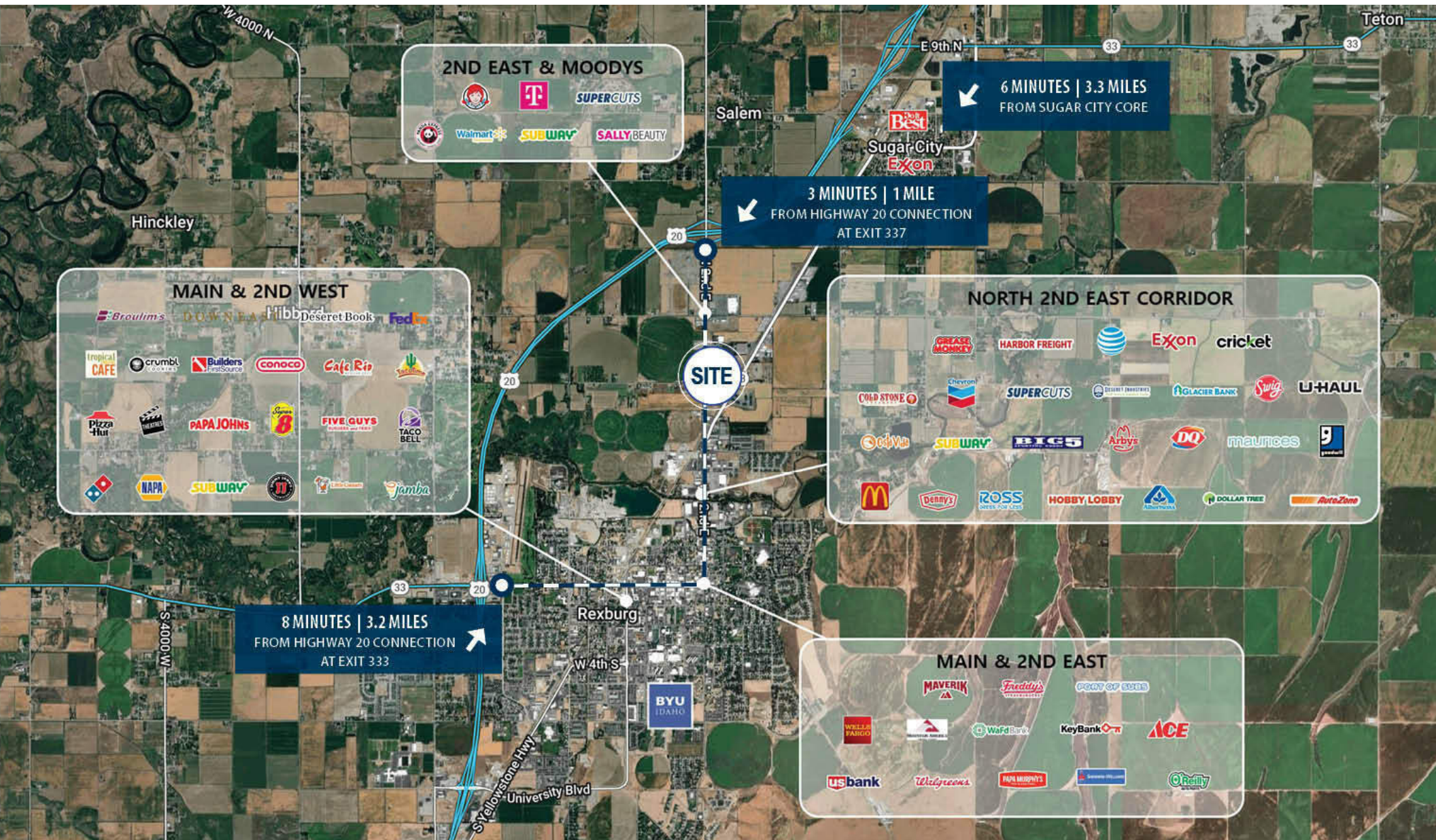


**EASILY ACCESSIBLE FROM HIGHWAY 20
& HIGHWAY 33 VIA PRIMARY ARTERIAL**

UPDATED: DECEMBER 04, 2025

THIS PROPERTY IS EXCLUSIVELY MARKETING BY TOK EASTERN IDAHO LLC DBA TOK COMMERCIAL

This information was obtained from sources believed reliable but cannot be guaranteed. Any opinions or estimates are used for example only.



UPDATED: DECEMBER 04, 2025

THIS PROPERTY IS EXCLUSIVELY MARKETING BY TOK EASTERN IDAHO LLC DBA TOK COMMERCIAL

This information was obtained from sources believed reliable but cannot be guaranteed. Any opinions or estimates are used for example only.