



DGNY
Commercial

272 W PARK AVENUE, LONG BEACH, NY

±1,800 SF Medical/Office Building

FOR SALE

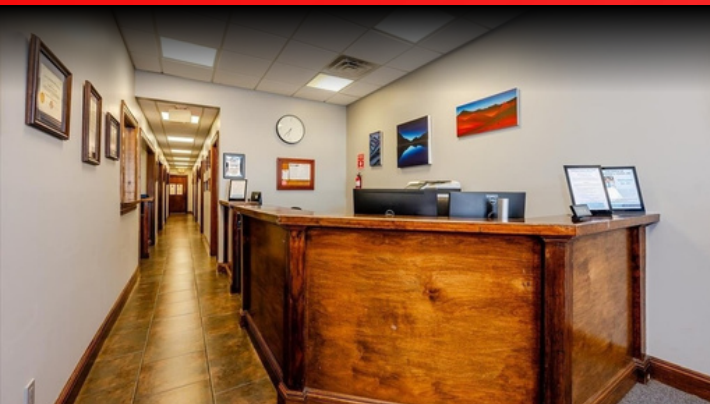


Leah Tozer

Associate Real Estate Broker

516.860.5784

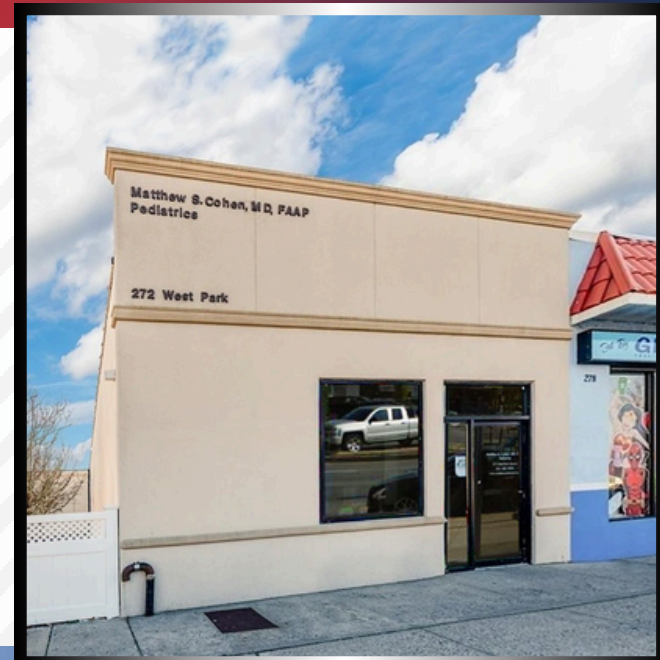
theleahteam@gmail.com



Property Details:

1,800 SF MEDICAL/OFFICE BUILDING 2,178 SF Lot

- Recently Renovated
- Building is Constructed to Add a 2nd Floor
- Main Business Street of Long Beach
- Strong Commercial Area
- Walk to the LIRR Station
- Walk to All Amenities



272 W PARK AVENUE, LONG BEACH, NY



Area Demographics	1 Miles	3 Miles
POPULATION:	19,741	54,852
AVERAGE HH INCOME:	\$116,076	\$112,860

For more information on this exclusive, contact:

Leah Tozer
Associate Real Estate Broker
516.860.5784
theleahteam@gmail.com



©2024 DGNY Commercial, LLC. The information contained in the communication is strictly confidential. All rights reserved. This information has been obtained from sources believed to be reliable, but has not been verified. No warranty or representation, express or implied, is made as to the accuracy or completeness of the information contained herein and same is submitted subject to errors, omissions, change of price, rental or other conditions, withdrawal without notice and to any special listing conditions imposed by the property owner(s).