

384 Troutman ST
BUSHWICK

OFFICE LEASE



COUNTER

REAL ESTATE

384 TROUTMAN ST
BUSHWICK

JUSTIN LOSH
(347) 388 4649
JUSTIN@COUNTER.COM

OFFICE
57 THAMES ST, # 110
BROOKLYN, NY, 11237



PROPERTY DETAILS

 **Negotiable**

 **1200 SF APPROX**

 **Negotiable**

\$36 PSF

RENT + ELECTRIC. NO ADD'L FEES

HVAC INSTALLED

GLASS CONFERENCE ROOM

1 BLOCK TO TRAIN ENTRANCE

NEW CONSTRUCTION

PRIVATE AND QUIET

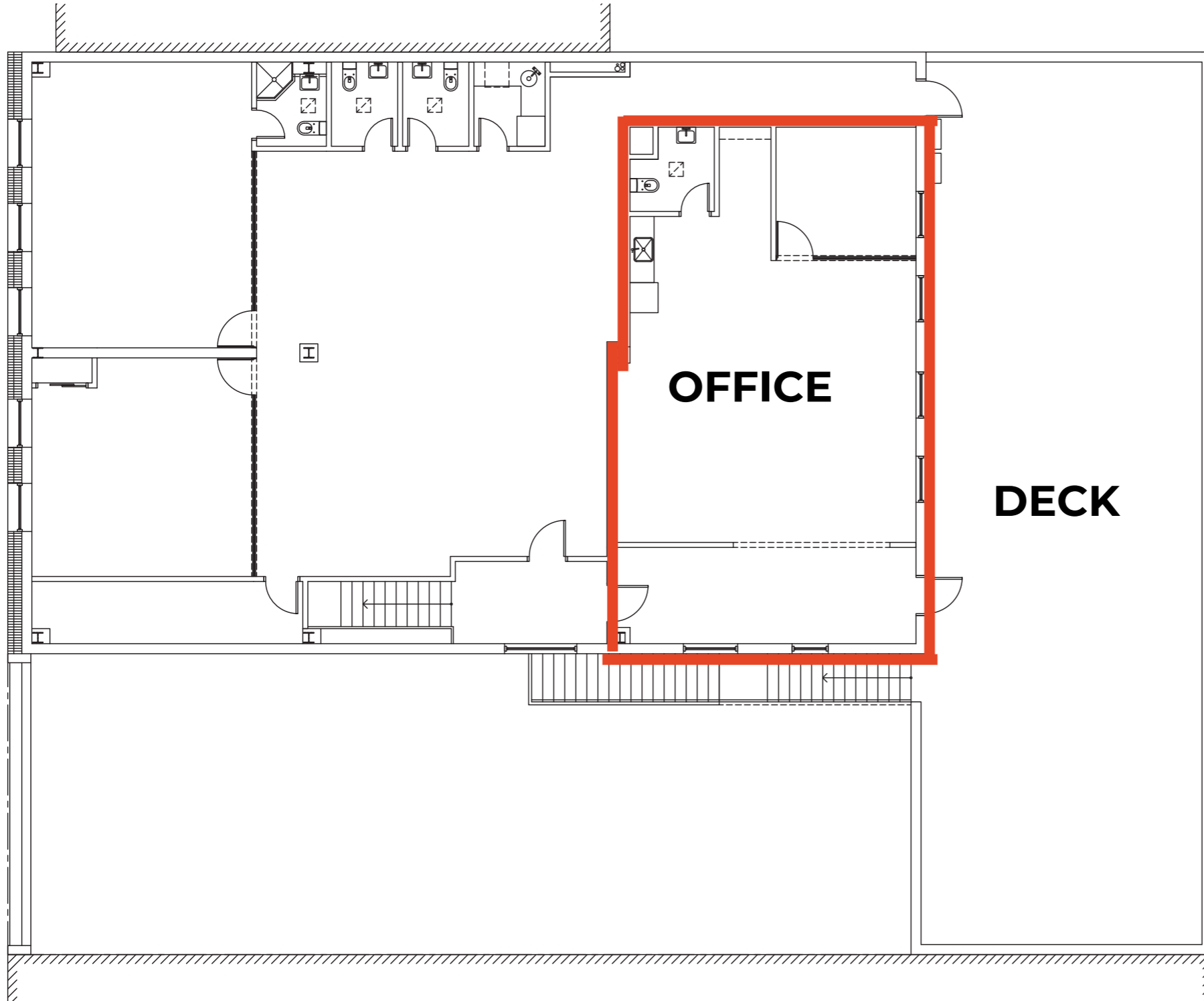
ONE OTHER TENANT ON FLOOR

SEMI PRIVATE DECK

384 TROUTMAN ST
BUSHWICK

JUSTIN LOSH
(347) 388 4649
JUSTIN@COUNTER.COM

OFFICE
57 THAMES ST, # 110
BROOKLYN, NY, 11237

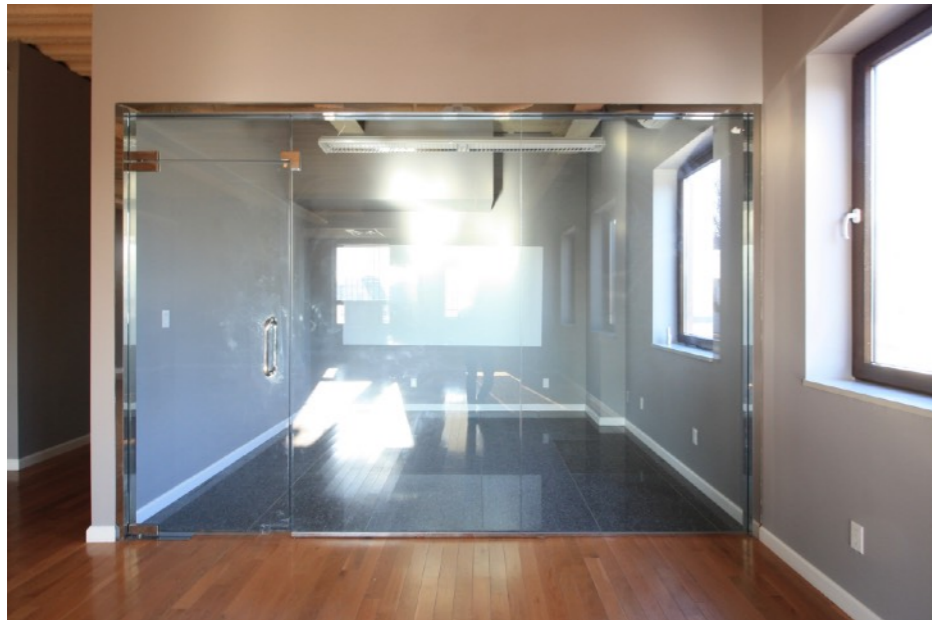
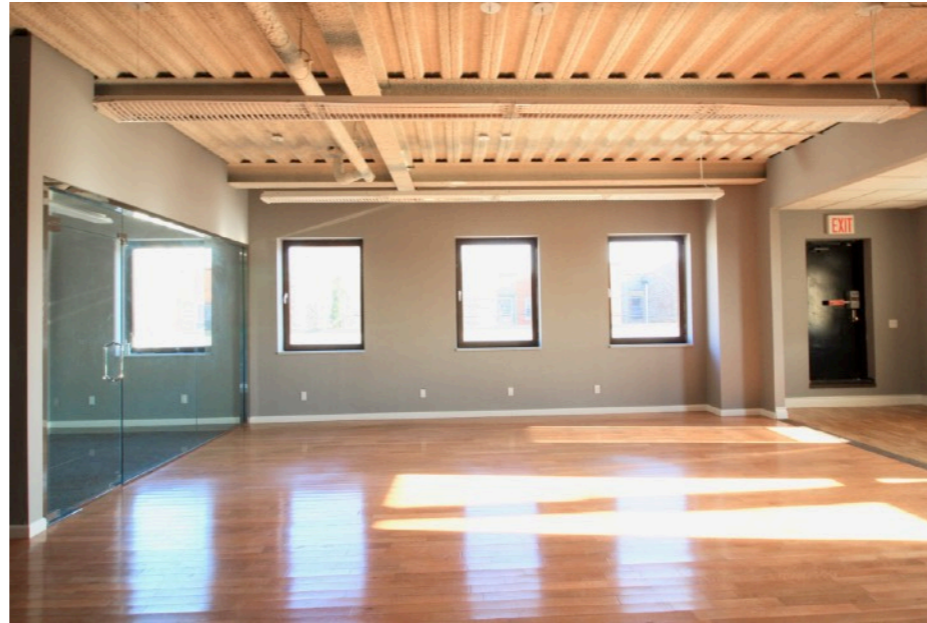


FLOOR PLAN

**384 TROUTMAN ST
BUSHWICK**

JUSTIN LOSH
(347) 388 4649
JUSTIN@COUNTER.COM

OFFICE
57 THAMES ST, # 110
BROOKLYN, NY, 11237



OFFICE

Great Light

All Fixtures 1 Year Old

1 Bathroom

Next To Jefferson L Train

On Same Block As Breakfast,
Lunch And Dinner Options

15 Minutes To Manhattan

**384 TROUTMAN ST
BUSHWICK**

JUSTIN LOSH
(347) 388 4649
JUSTIN@COUNTER.COM

OFFICE
57 THAMES ST, # 110
BROOKLYN, NY, 11237



DECK

Large Area Covered With
Paver Stones

Good For Company Bbqs
And Fresh Air

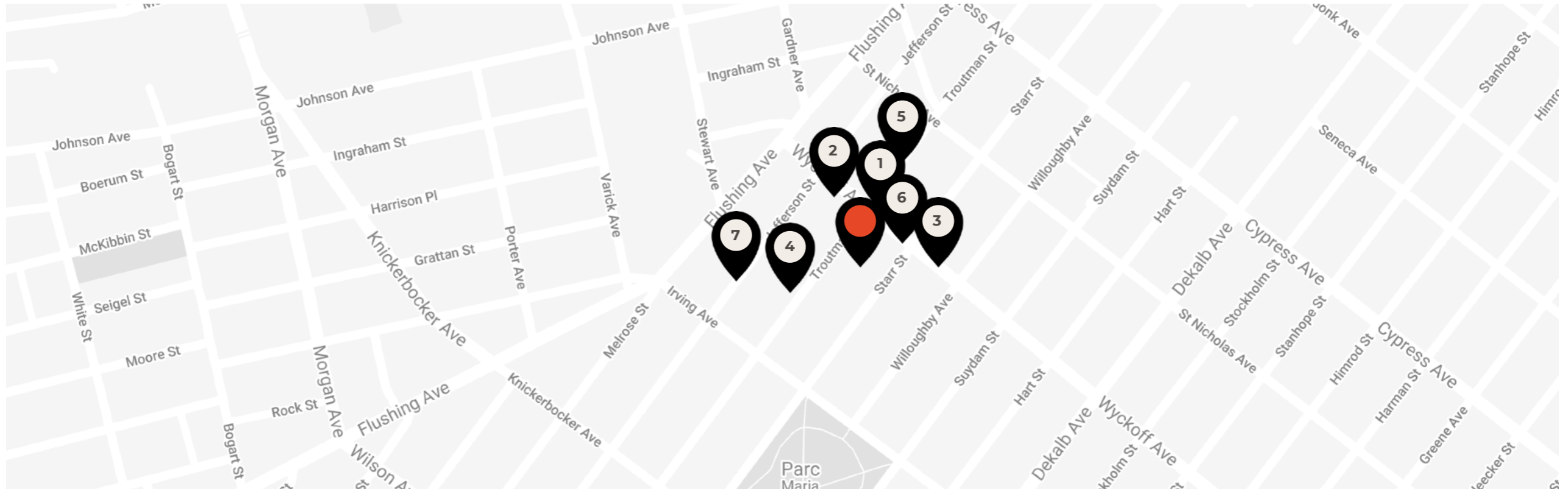
Private Place To Talk

One Other Tenant Has
Access, But They Do Not Use
The Deck.

384 TROUTMAN ST BUSHWICK

JUSTIN LOSH
(347) 388 4649
JUSTIN@COUNTER.COM

OFFICE
57 THAMES ST, # 110
BROOKLYN, NY, 11237



BUSHWICK

A POPULAR HIPSTER ENCLAVE IN DEEP BROOKLYN. BUSHWICK COMBINES A THRIVING ART, RESTAURANT AND BAR SCENE WITH AN OLDER, MORE ENTRENCHED HISPANIC CULTURE.

Bushwick has seen a lot of change over the years. In the early 1900s, it was known for its thriving distilleries and breweries.

After those industries declined, it experienced a long period of blight through the 1970s and '80s. Now the neighborhood is seeing a renaissance, as artists pushed out of Williamsburg and elsewhere to move in and raise its awareness. Bushwick is a perfect place for those seeking unconventional spaces: the mix of traditional and converted retail makes anything possible.

NEIGHBORS

- 1 - ARTICHOKE BASILE
- 2- HOUSE OF YES
- 3- BAD BAGEL
- 4- THE JOHNSON'S
- 5- AP CAFE
- 6- HANNA MARKET
- 7- DAYA YOGA

TRANSPORT

JEFFERSON ST L ROUTE