

# RARE OPPORTUNITY TO OWN A PRIVATE TOP-FLOOR OFFICE CONDO IN BUCKHEAD

5064 ROSWELL RD. BUILDING B. ATLANTA, GA 30342



## Cone Commercial Real Estate

2964 Hardman Ct NE, Atlanta, GA 30305

(404) 841-9665

info@conecommercial.com



## Luke Zabinski

Vice President - Capital Markets & Leasing

W: 404-841-9665 ext. 102

M: 404-680-7764

lzabinski@conecommercial.co

Information contained herein may have been provided by the seller, landlord or other outside sources. While deemed reliable, it may be estimated, projected, limited in scope and is subject to change or inaccuracies. Pertinent information should be independently confirmed prior to lease or purchase offer or within an applicable due diligence period.



# PROPERTY DETAILS

**5064 ROSWELL RD. BUILDING B. ATLANTA, GA 30342**

Discover a fantastic office condo in a prime location with limited supply! This **2,400 +/- square foot** office condo spans the entire top floor, offering unparalleled privacy and exclusivity. Situated in the heart of Buckhead off Roswell Road, this property provides easy access to all the amenities and conveniences the area has to offer.

## Key Features

### ✓ Prime Buckhead Location:

- Conveniently situated just off of Roswell Road, with easy access to I-285, GA 400, Chastain Park, & Sandy Springs.

### ✓ Top-Floor Office Condo:

- Offers complete privacy and an unparalleled view.

### ✓ Rare Opportunity:

- Limited availability in a highly sought-after market.

### ✓ HOA Community



### Cone Commercial Real Estate

2964 Hardman Ct NE,  
Atlanta, GA 30305  
(404) 841-9665  
info@conecommercial.com

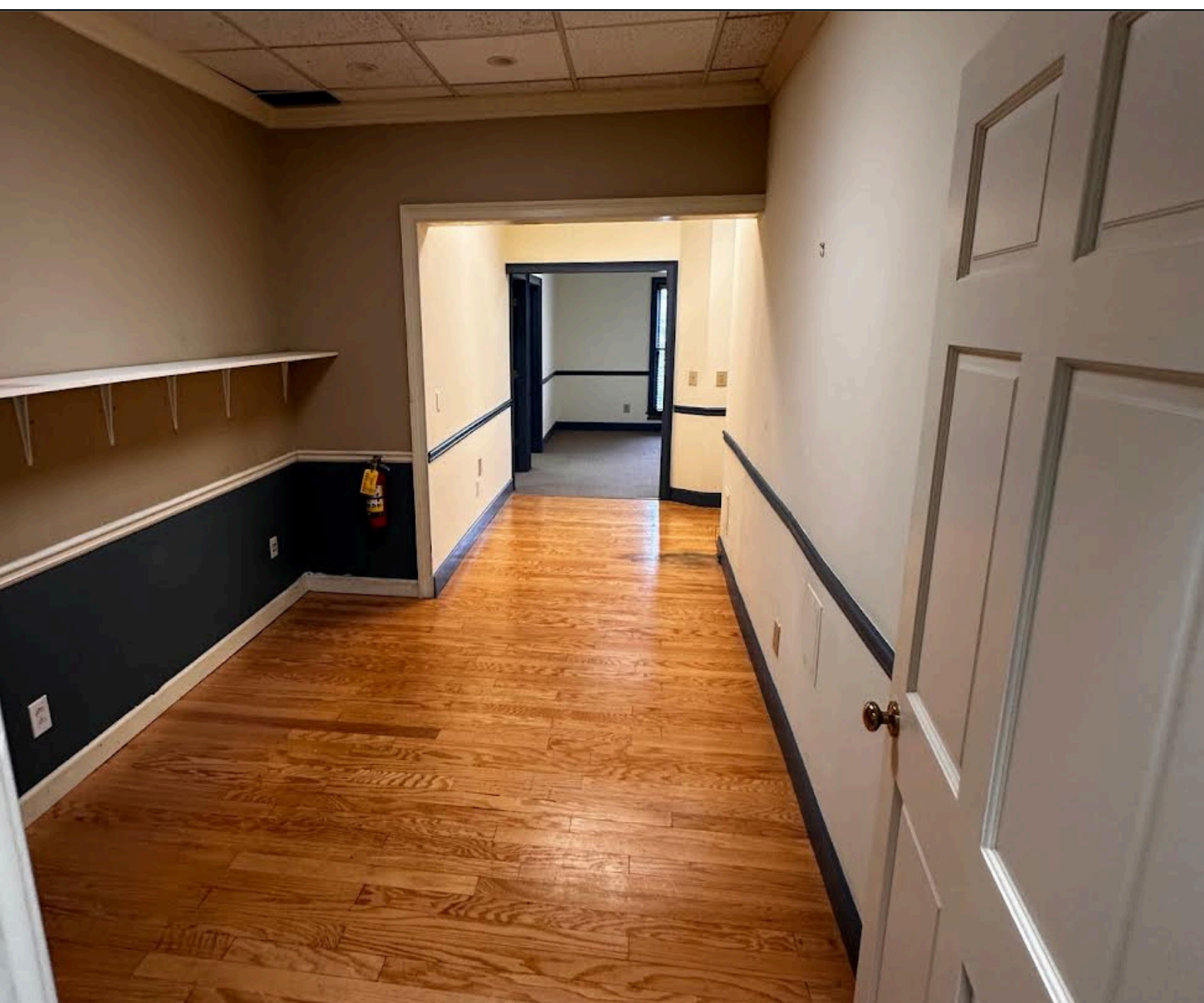
### Luke Zabinski

Vice President - Capital Markets & Leasing  
W: 404-841-9665 ext. 102  
M: 404-680-7764  
lzabinski@conecommercial.co



# PROPERTY PHOTOS

5064 ROSWELL RD. BUILDING B. ATLANTA, GA 30342



**Cone Commercial Real Estate**

2964 Hardman Ct NE,  
Atlanta, GA 30305  
(404) 841-9665  
info@conecommercial.com

**Luke Zabinski**

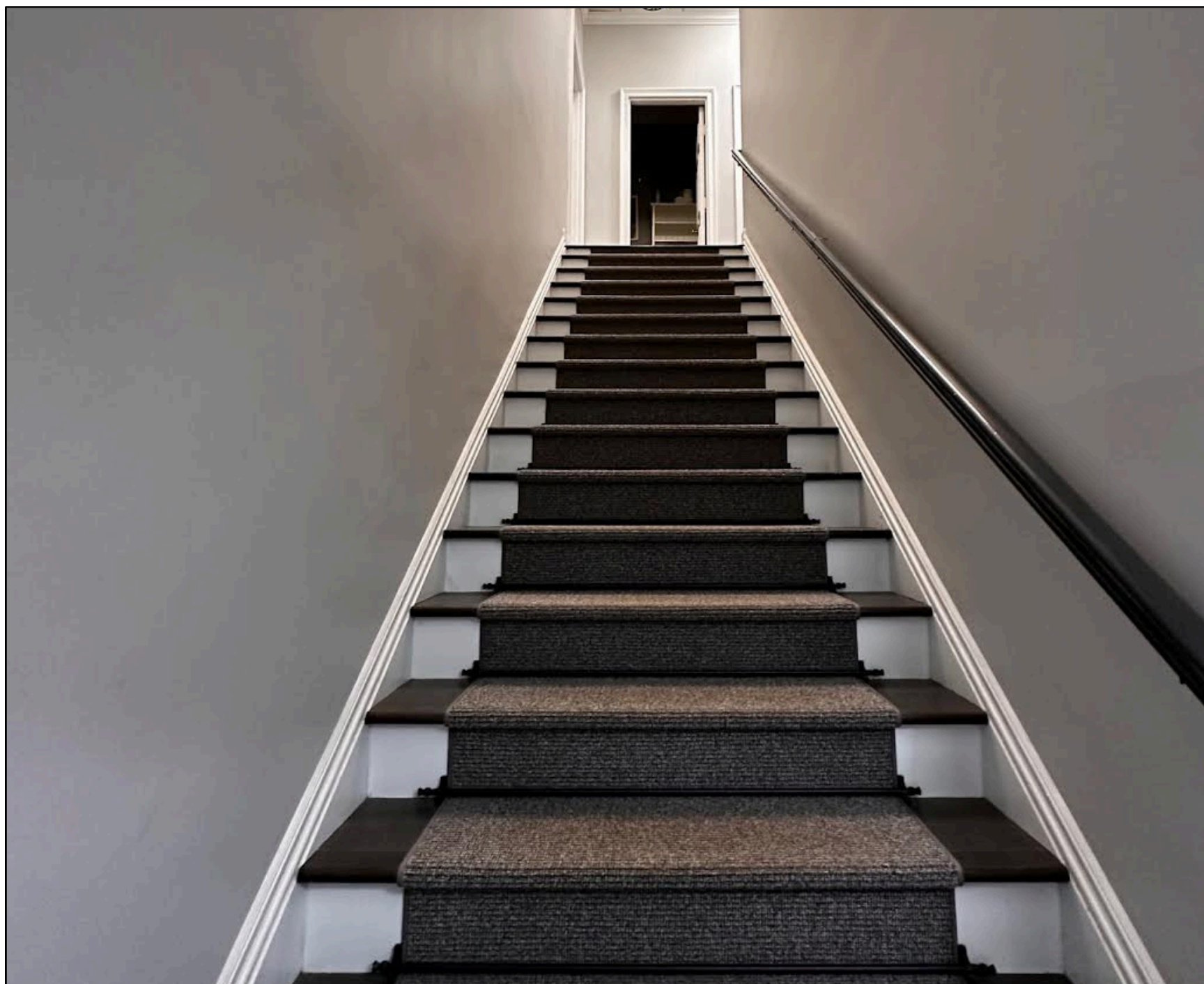
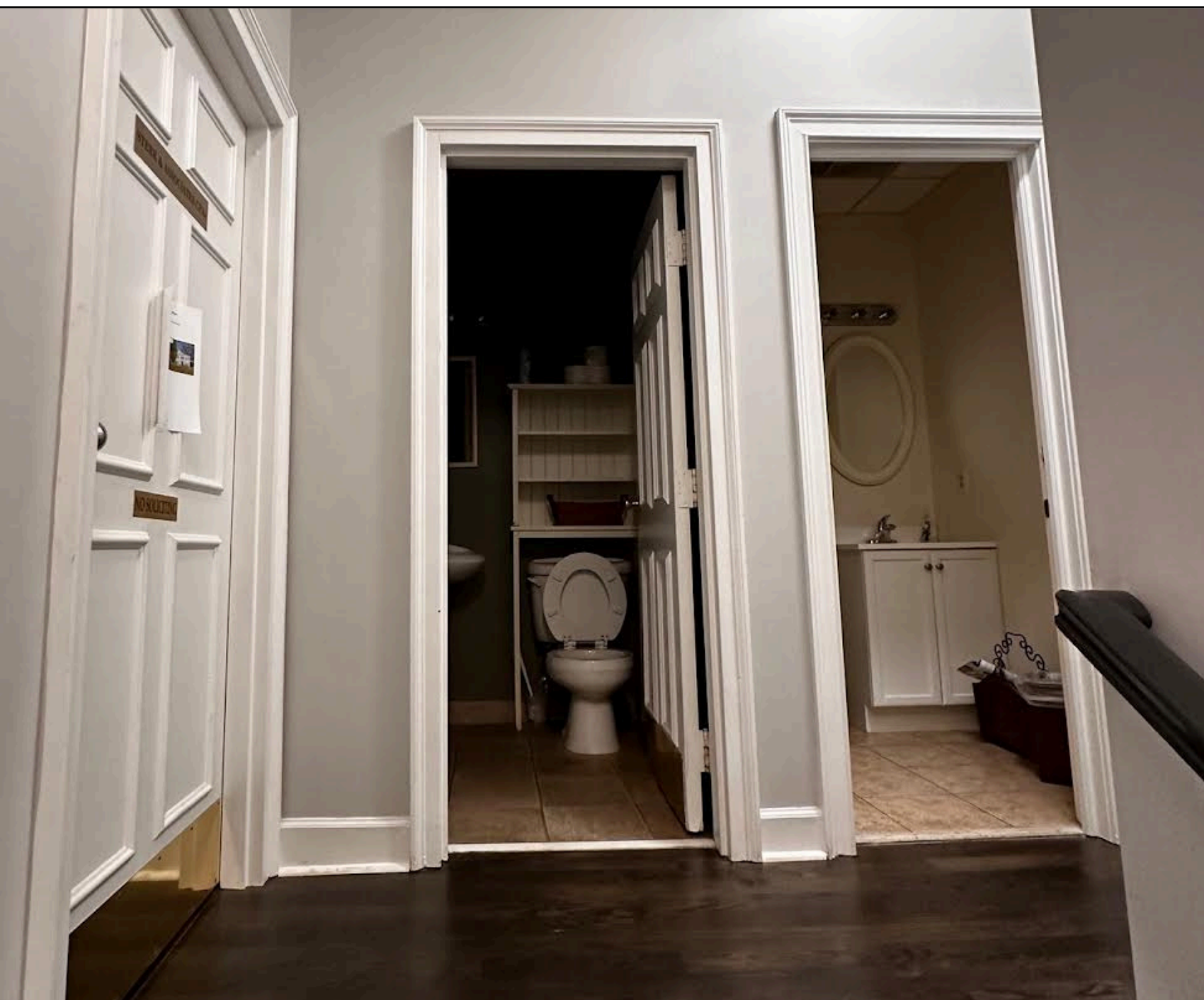
Vice President - Capital Markets & Leasing  
W: 404-841-9665 ext. 102  
M: 404-680-7764  
lzabinski@conecommercial.co

Information contained herein may have been provided by the seller, landlord or other outside sources. While deemed reliable, it may be estimated, projected, limited in scope and is subject to change or inaccuracies. Pertinent information should be independently confirmed prior to lease or purchase offer or within an applicable due diligence period.



# PROPERTY PHOTOS

5064 ROSWELL RD. BUILDING B. ATLANTA, GA 30342



**Cone Commercial Real Estate**

2964 Hardman Ct NE,

Atlanta, GA 30305

(404) 841-9665

info@conecommercial.com

**Luke Zabinski**

Vice President - Capital Markets & Leasing

W: 404-841-9665 ext. 102

M: 404-680-7764

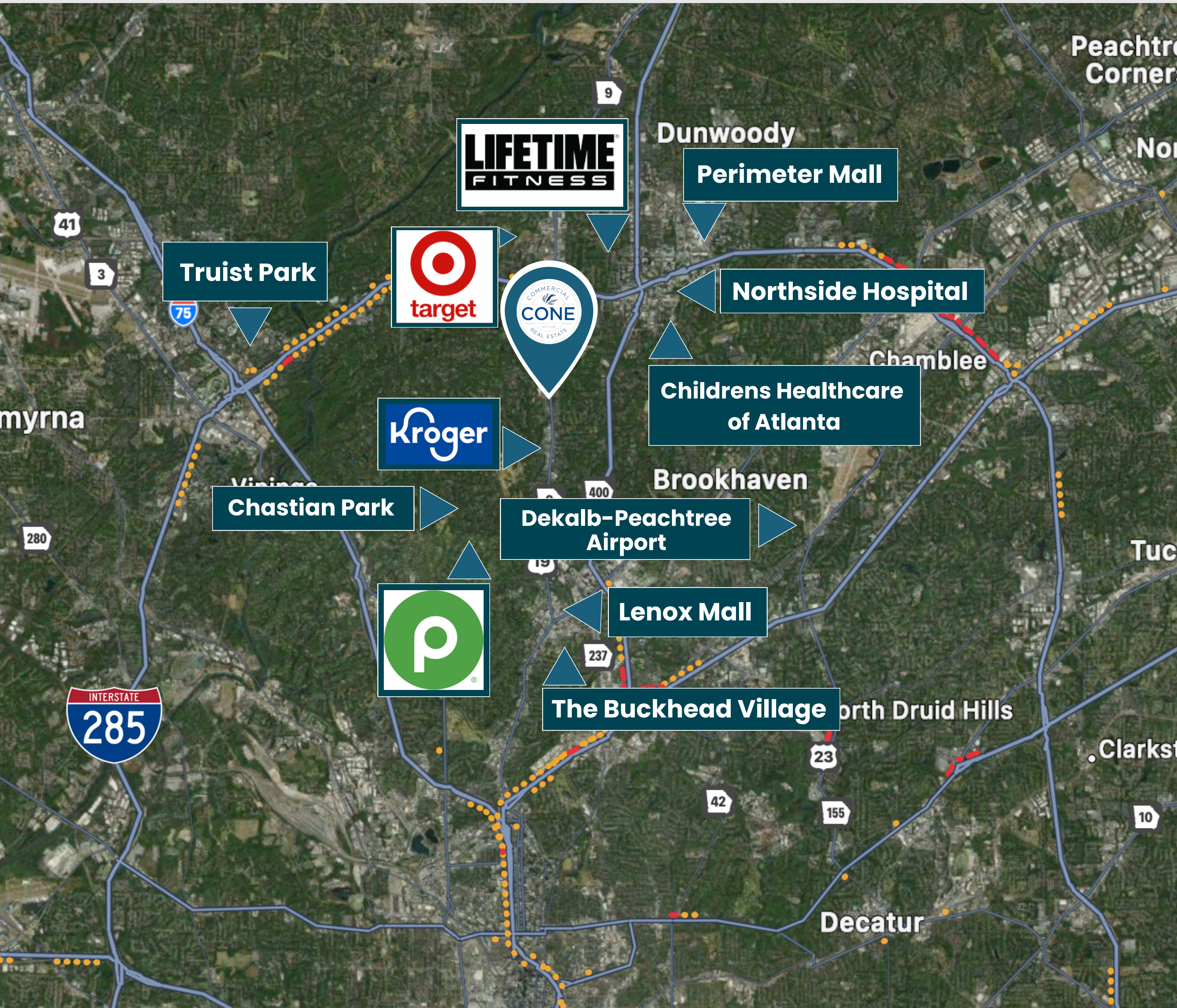
lzabinski@conecommercial.co

Information contained herein may have been provided by the seller, landlord or other outside sources. While deemed reliable, it may be estimated, projected, limited in scope and is subject to change or inaccuracies. Pertinent information should be independently confirmed prior to lease or purchase offer or within an applicable due diligence period.



# AREA MAP

5064 ROSWELL RD. BUILDING B. ATLANTA, GA 30342



**Cone Commercial Real Estate**  
2964 Hardman Ct NE,  
Atlanta, GA 30305  
(404) 841-9665  
info@conecommercial.com

## Luke Zabinski

Vice President - Capital Markets & Leasing  
W: 404-841-9665 ext. 102  
M: 404-680-7764  
lzabinski@conecommercial.co

Information contained herein may have been provided by the seller, landlord or other outside sources. While deemed reliable, it may be estimated, projected, limited in scope and is subject to change or inaccuracies. Pertinent information should be independently confirmed prior to lease or purchase offer or within an applicable due diligence period.