

VILLAGE PARK SOUTH  
10401-10479 N. MAY AVENUE  
OKLAHOMA CITY, OK 73120



Retail Space For Lease

\$10.00-\$12.00/SF NNN  
NNN Charges: \$2.21/SF

**SUITES AVAILABLE**

10407: 3,985 SF MOL  
10479: 1,625 SF MOL

**NAIRED** COMMERCIAL  
REAL ESTATE  
405.840.0600 | [NAIRED.COM](http://NAIRED.COM)

NATHAN WILSON  
405.760.5327  
[NATHAN@NAIRED.COM](mailto:NATHAN@NAIRED.COM)

DAVID HARTNACK  
405.761.8955  
[DAVID@NAIRED.COM](mailto:DAVID@NAIRED.COM)

SAM SWANSON  
405.208.2046  
[SAM@NAIRED.COM](mailto:SAM@NAIRED.COM)





## PROPERTY OVERVIEW

TOTAL SF	22,573 SF
LOT SIZE	1.9 ACRES +/-
YEAR BUILT	1985
ZONING	C-3

- Remodeled Center
- Perfect for Office or Retail Use
- Tenant Improvements Available
- Frontage: 260' on May Avenue

NATHAN WILSON  
405.760.5327  
NATHAN@NAIRED.COM

DAVID HARTNACK  
405.761.8955  
DAVID@NAIRED.COM

SAM SWANSON  
405.208.2046  
SAM@NAIRED.COM

## DEMOGRAPHICS



### POPULATION

1 MILE: 9,791  
3 MILES: 70,905  
5 MILES: 198,092



### AVERAGE HOUSEHOLD INCOME

1 MILE: \$89,954  
3 MILES: \$82,420  
5 MILES: \$84,447



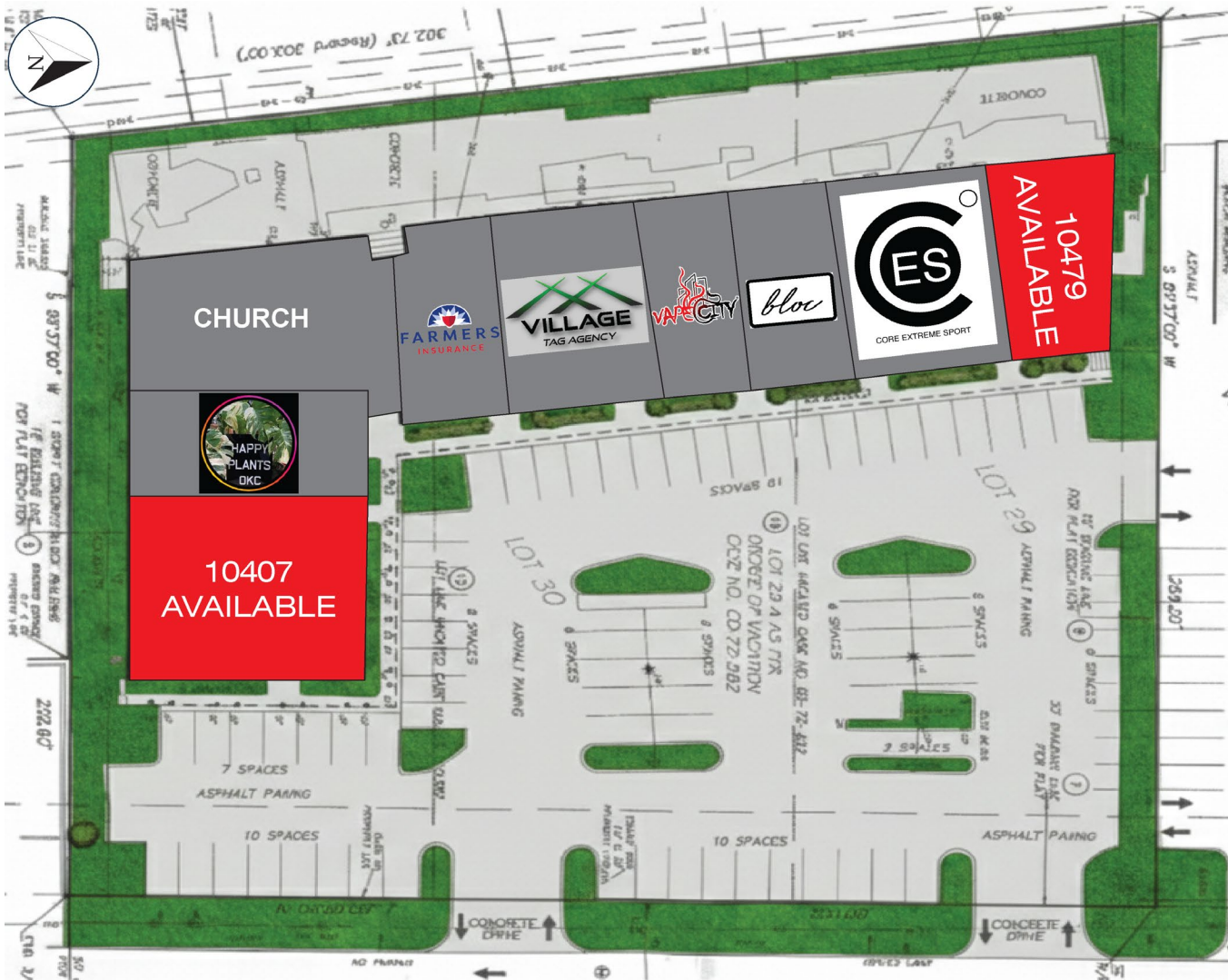
### TOTAL HOUSEHOLDS

1 MILE: 4,729  
3 MILES: 33,397  
5 MILES: 88,685



1 MILE FROM  
LAKE HEFNER  
PARKWAY

# VILLAGE PARK SOUTH SITE PLAN



## VILLAGE PARK SOUTH

SUITE	TENANT	SF
<b>10407</b>	<b>VACANT</b>	<b>3,985 SF</b>
10413	Happy Plants	1,625 SF
10417	Church	4,236 SF
10437	Farmer's Insurance	1,300 SF
10443	Village Tag Agency	3,225 SF
10455	Vape City	1,625 SF
10461	Le Bloc Pilates	1,625 SF
10467	Core Extreme Sports	1,625 SF
<b>10479</b>	<b>VACANT</b>	<b>1,625 SF</b>



# VILLAGE PARK SOUTH AERIAL

