

FOR LEASE

Okeechobee Office Warehouse Complex 2007 & 2101 Okeechobee Rd, Fort Pierce, FL 34950

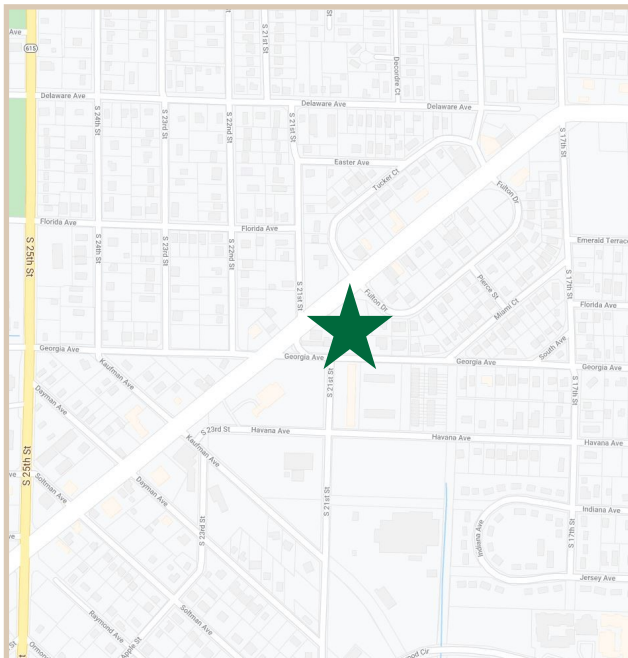
PROPERTY FACTS

Property Sq. Ft.	10,943 Sq. Ft.
Parcel Size	1.50 Acres
Property Configuration	Bldg. 2007 3,399 Square Feet Bldg. 2101 7,594 Square Feet
Utilities	City Water and Sewer Florida Power and Light
Use	Office/Warehouse Complex
Building Height	Single Story
Zoning	General Commercial



PROPERTY HIGHLIGHTS

Price:	Great value for newly renovated space.
Access & Frontage:	Access on both Georgia Avenue and Okeechobee Road. This property has 383 lineal feet of frontage on Okeechobee Road.
Location:	Near Indian River State College and Fiske Blvd I-95 Intersection. Okeechobee Road is the major east west thoroughfare in Fort Pierce.
Aesthetics:	Extensive interior and exterior renovations, including new paint and signage.

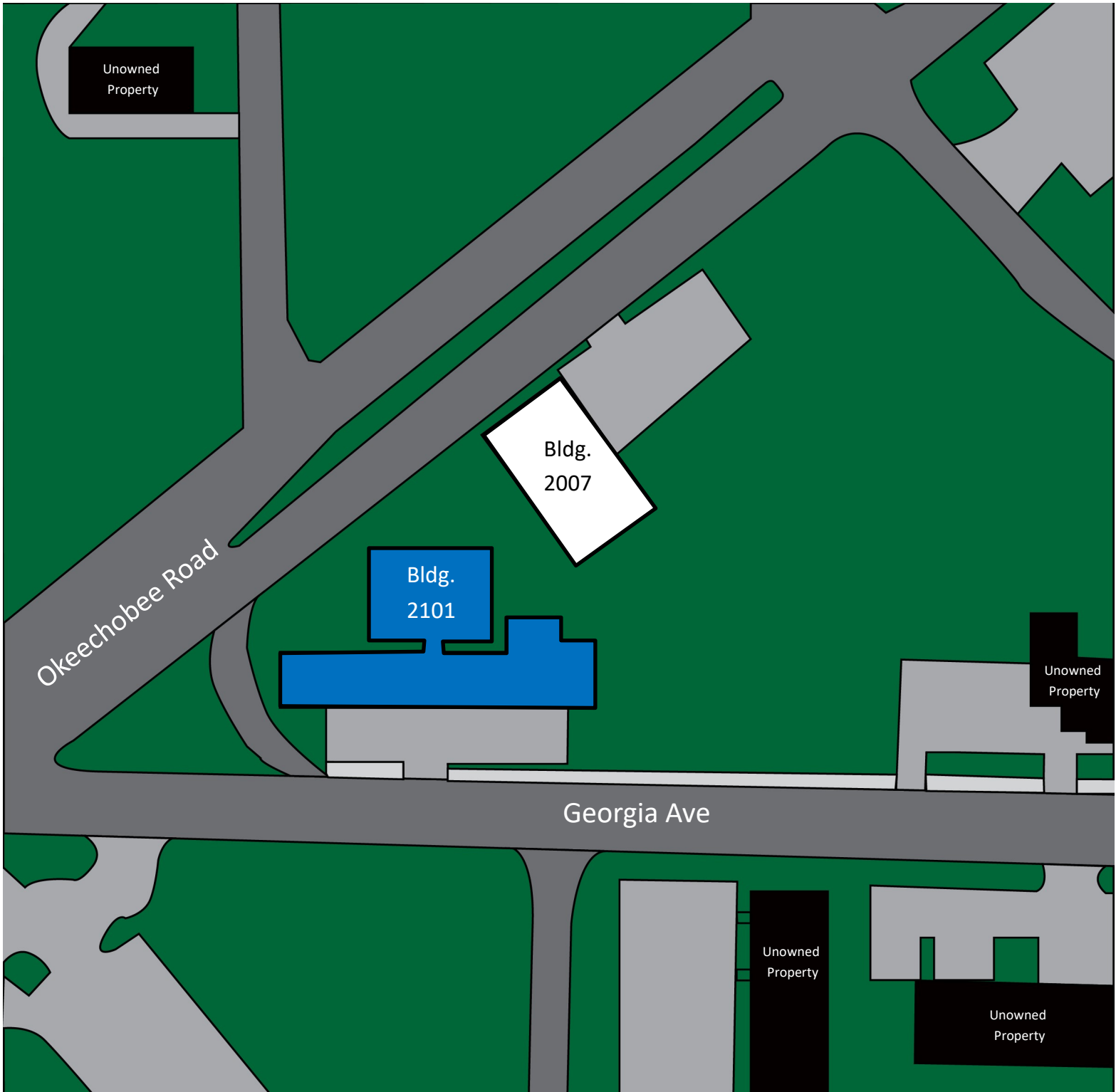


CHARLES A. VON STEIN, INC.
*Commercial Property Management,
Sales & Leasing Specialists since 1963*
626 Old Dixie Highway SW
Vero Beach, FL 32962
www.vscrc.com

CONTACT INFO:
Brevard County: 321.725.1961
Indian River County: 772.778.4885
Fax: 772.778.4908
Leasing: leasing@vscrc.com

SITE PLAN

Okeechobee Office Warehouse Complex 2007 & 2101 Okeechobee Rd, Fort Pierce, FL 34950



CHARLES A. VON STEIN, INC.
*Commercial Property Management,
Sales & Leasing Specialists since 1963*
626 Old Dixie Highway SW
Vero Beach, FL 32962
www.vscrc.com

CONTACT INFO:
Brevard County: 321.725.1961
Indian River County: 772.778.4885
Fax: 772.778.4908
Leasing: leasing@vscrc.com

UNITS FOR LEASE

Okeechobee Office Warehouse Complex 2007 & 2101 Okeechobee Rd, Fort Pierce, FL 34950

UNIT	SIZE	RATE	MONTHLY RATE	UTILITIES INCLUDED				POTENTIAL SPACE CONFIGURATIONS AND USES
				WATER	ELECTRIC	TRASH	CABLE	
2101	7,594 SF	\$14.00 / SF	\$8,859.67 / YR	Yes	No	No	No	Renovated Office/Warehouse Space



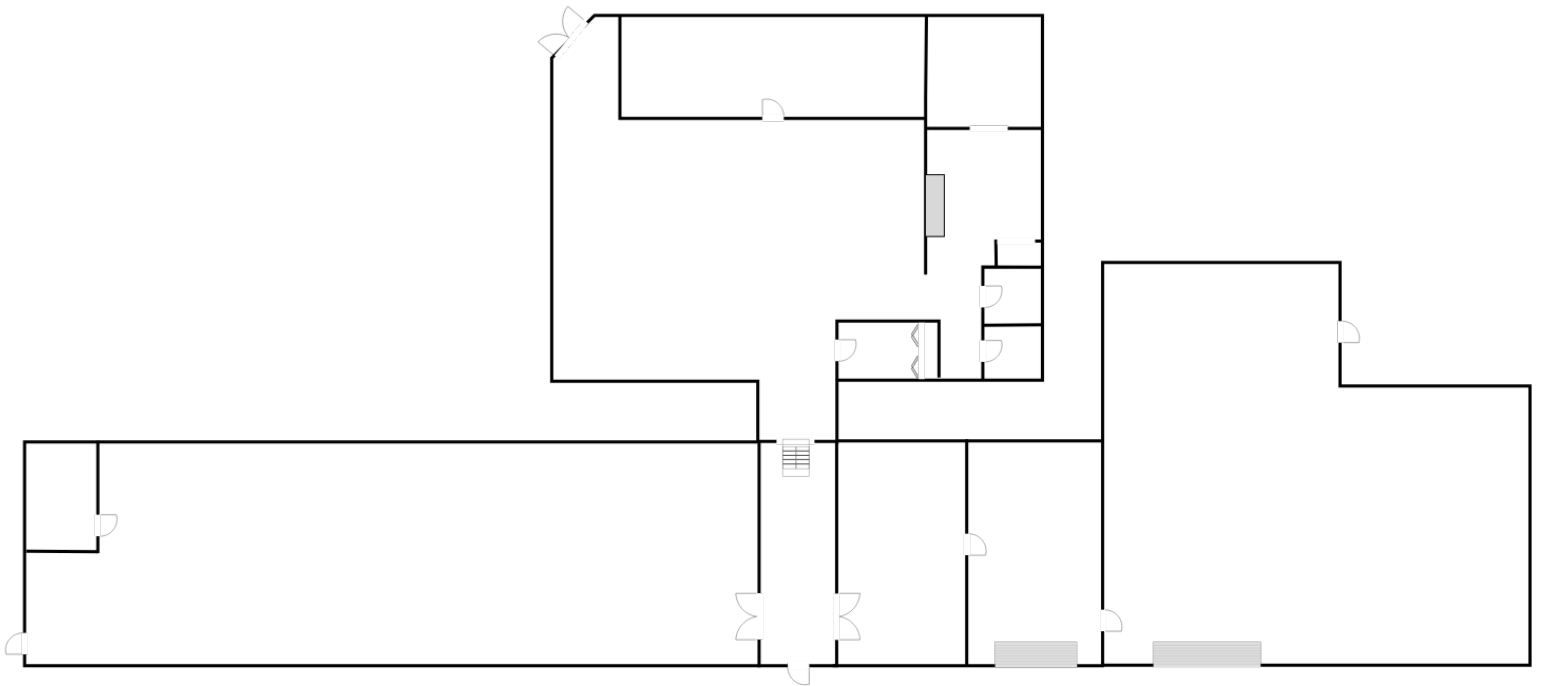
CHARLES A. VON STEIN, INC.
 Commercial Property Management,
 Sales & Leasing Specialists since 1963
 626 Old Dixie Highway SW
 Vero Beach, FL 32962
 www.vscrc.com

CONTACT INFO:
 Brevard County: 321.725.1961
 Indian River County: 772.778.4885
 Fax: 772.778.4908
 Leasing: leasing@vscrc.com

UNITS FOR LEASE

Unit 2101

Okeechobee Office Warehouse Complex 2007 & 2101 Okeechobee Rd, Fort Pierce, FL 34950



7,594 SF



CHARLES A. VON STEIN, INC.

*Commercial Property Management,
Sales & Leasing Specialists since 1963*
626 Old Dixie Highway SW
Vero Beach, FL 32962
www.vscre.com

CONTACT INFO:

Brevard County: 321.725.1961
Indian River County: 772.778.4885
Fax: 772.778.4908
Leasing: leasing@vscre.com

AERIAL

Okeechobee Office Warehouse Complex 2007 & 2101 Okeechobee Rd, Fort Pierce, FL 34950



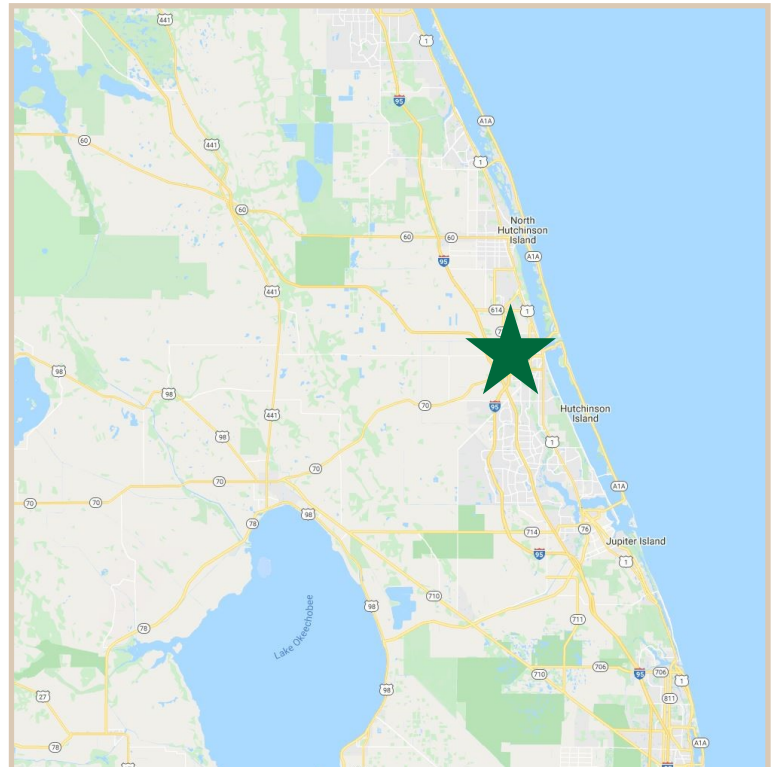
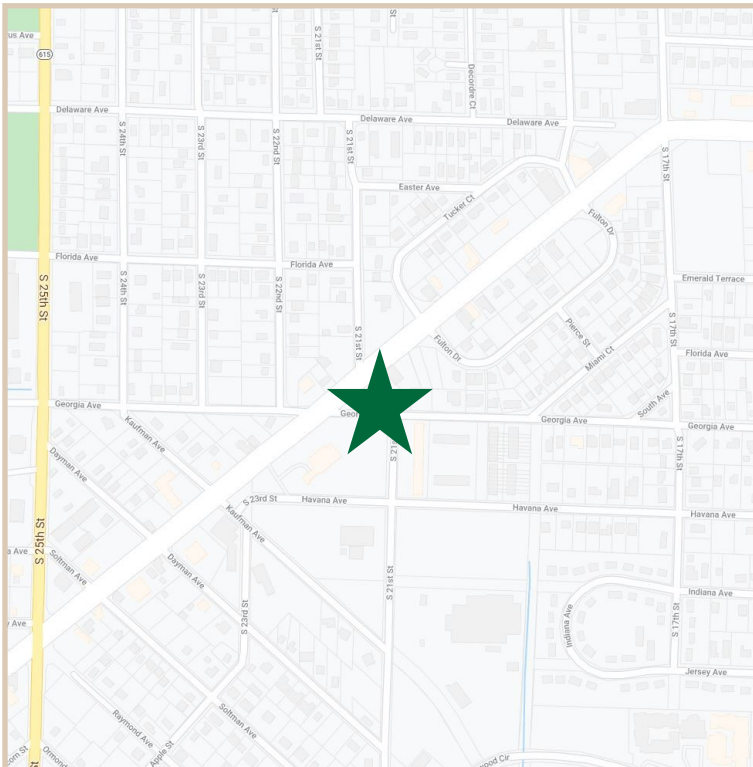
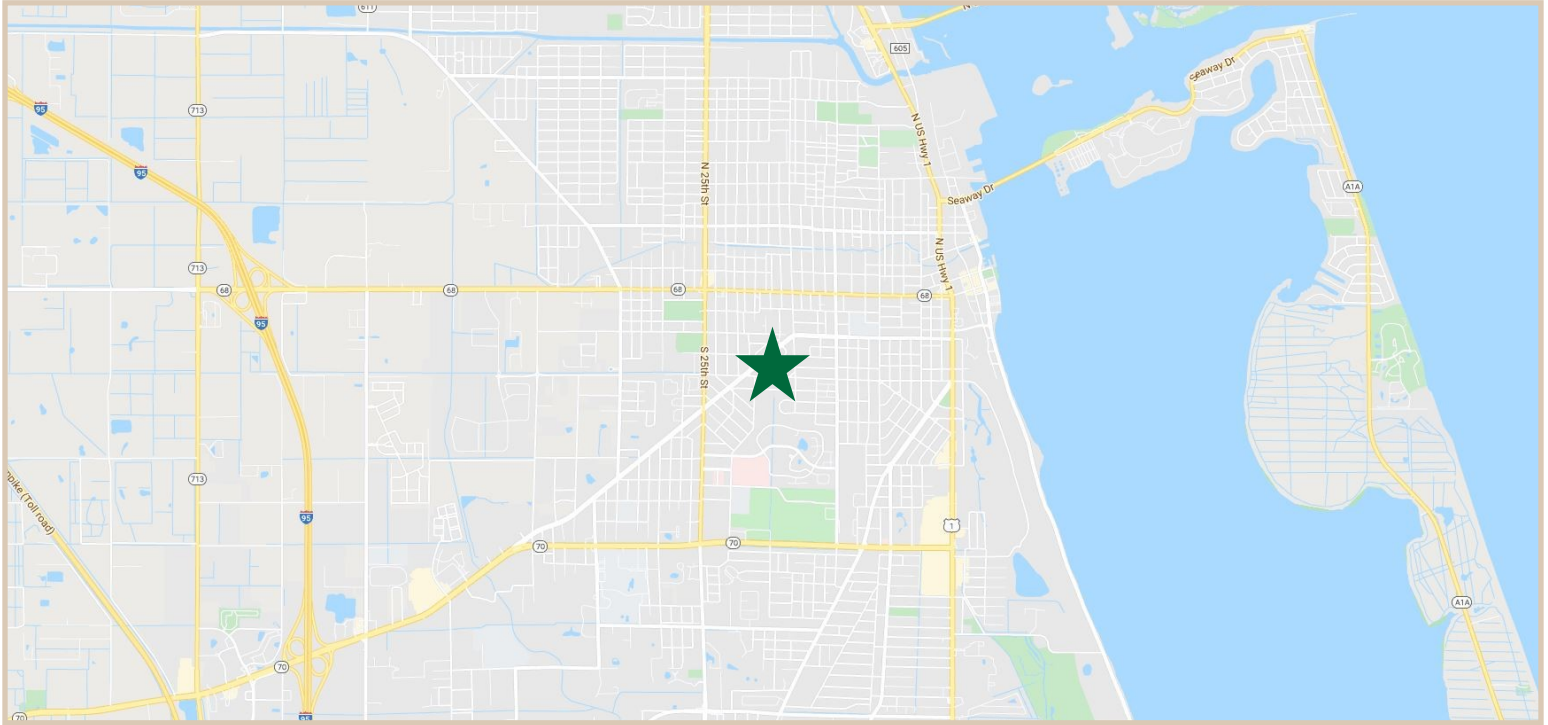
CHARLES A. VON STEIN, INC.
*Commercial Property Management,
Sales & Leasing Specialists since 1963*
626 Old Dixie Highway SW
Vero Beach, FL 32962
www.vscre.com

CONTACT INFO:

Brevard County:	321.725.1961
Indian River County:	772.778.4885
Fax:	772.778.4908
Leasing:	leasing@vscre.com

LOCATION MAPS

Okeechobee Office Warehouse Complex 2007 & 2101 Okeechobee Rd, Fort Pierce, FL 34950



1963
CHARLES A. VON STEIN, INC.
*Commercial Property Management,
Sales & Leasing Specialists since 1963*
626 Old Dixie Highway SW
Vero Beach, FL 32962
www.vscrc.com

CONTACT INFO:

Brevard County: 321.725.1961
Indian River County: 772.778.4885
Fax: 772.778.4908
Leasing: leasing@vscrc.com

ADDITIONAL PHOTOS

Okeechobee Office Warehouse Complex 2007 & 2101 Okeechobee Rd, Fort Pierce, FL 34950



CHARLES A. VON STEIN, INC.
*Commercial Property Management,
Sales & Leasing Specialists since 1963*
626 Old Dixie Highway SW
Vero Beach, FL 32962
www.vscrc.com

CONTACT INFO:
Brevard County: 321.725.1961
Indian River County: 772.778.4885
Fax: 772.778.4908
Leasing: leasing@vscrc.com

ALL INFORMATION FURNISHED REGARDING PROPERTY FOR SALE, RENTAL OR FINANCING SOURCES DEEMED RELIABLE, BUT NO WARRANTY OR REPRESENTATION IS MADE AS TO THE ACCURACY THEREOF AND SAME IS SUBMITTED SUBJECT TO ERRORS, OMISSIONS, CHANGE OF PRICE, RENTAL OR OTHER CONDITIONS, PRIOR SALE, LEASING OR FINANCING OR WITHDRAWAL WITHOUT NOTICE.