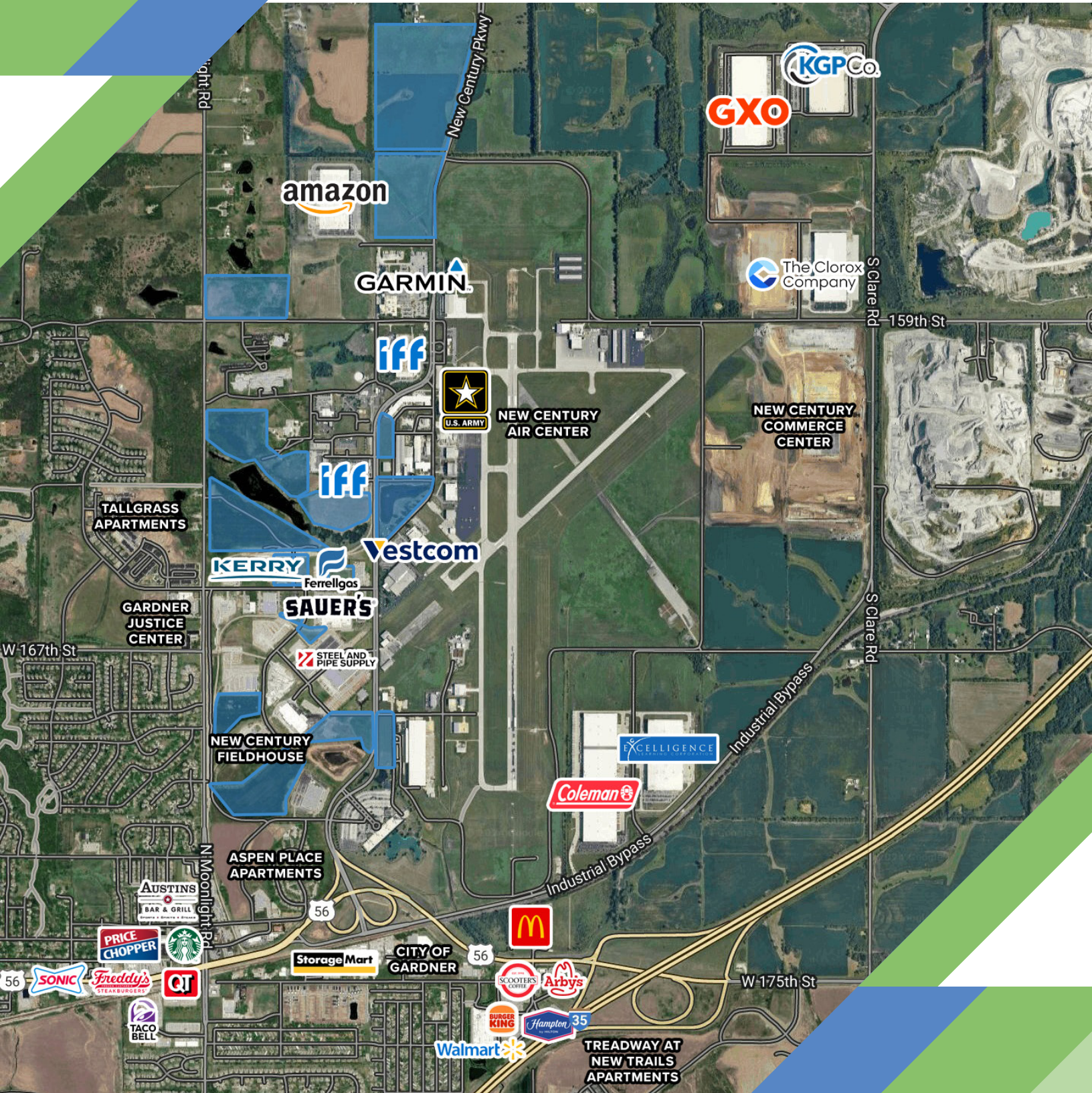


New Century AirCenter

Available Industrial Development Sites



SITE OVERVIEW

New Century AirCenter is a 1,500 acre business park that includes the third busiest airport in the Kansas City area. It is positioned less than a mile from I-35 and has direct access to BNSF's main rail line.

There is currently ±193 acres available for lease at flexible term lengths. The park consists of a diverse line of tenants such as Amazon, Garmin, and IFF.

The site is a BNSF certified site and located minutes from their Intermodal Facility. Several available sites have rail spur access. On-site rail car storage can be available. The airport owns a digital track scale for weighing requirements.



New Century AirCenter is the first AEROready certified area in Kansas. This ensures the supply of labor and quality sites, opportunities to customize labor training and utility and transportation infrastructure are in place.

The site's infrastructure capabilities available include: electricity via Evergy, telecommunications via AT&T, natural gas via Atmos Energy, water via the Airport Commission, and sewer via Johnson County Wastewater.



Electric

Evergy

- 12.47 kV/ 3-phase distribution
- Nearest distribution substation: 2.5 miles from site
- Nearest transmission line: 161kV (1.25 miles from site)
- Dual loop system



Water

Johnson County
Airport Commission

- Up to 12" line
- 3000 gpm at 80 psi regulated flow capacity



Gas

Atmos

- 4" – 6" gas main
- Available to proposed sites



Sewer

Johnson County
Wastewater

- 8" and larger lines
- 1.65 mgd capacity
- .79 mgd average daily flow (2019)



Telecom

AT&T

- Access to a T-1 carrier
- Number 5 ESS central office
- Fiber optics
- Self-healing network capabilities

SITE HIGHLIGHTS



**EASY ACCESS
TO I-35 VIA
56 HIGHWAY**



**LAND LEASES
WITH FLEXIBLE
TERM LENGTH**



**RAIL SERVED SITES
AVAILABLE
(SERVED BY BNSF)**



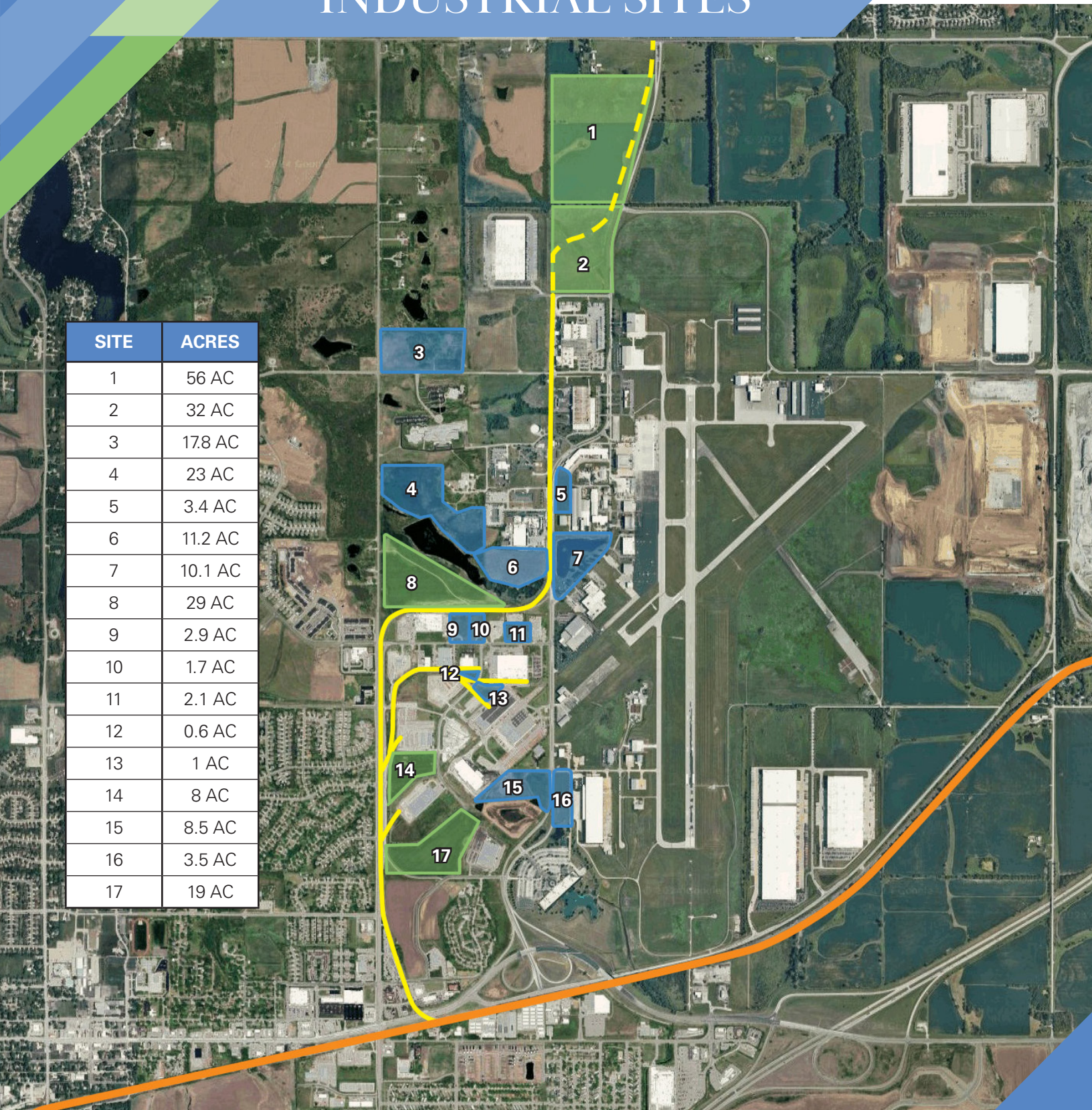
**ECONOMIC
INCENTIVES
AVAILABLE**



**INQUIRE FOR
INDIVIDUAL SITE
PRICING**

INDUSTRIAL SITES

SITE	ACRES
1	56 AC
2	32 AC
3	17.8 AC
4	23 AC
5	3.4 AC
6	11.2 AC
7	10.1 AC
8	29 AC
9	2.9 AC
10	1.7 AC
11	2.1 AC
12	0.6 AC
13	1 AC
14	8 AC
15	8.5 AC
16	3.5 AC
17	19 AC



Potential Rail Served Site
 BNSF Track

Jcax Track
 Future Jcax Track

KANSAS CITY INDUSTRIAL STRENGTH



- ▶ FOREIGN TRADE ZONE (FTZ): more space than any other US city
- ▶ #2 Auto hub for manufacturing and assembly in USA according to Brookings Institution
- ▶ Workforce 150,000+ manufacturing and logistics employees in Kansas City
- ▶ New world class airport opened in 2023
- ▶ 2.5 million metro population
- ▶ 335 million sf industrial market
- ▶ 15th largest industrial market in the US
- ▶ Top 12 industrial market for net absorption in the US in 2023

