

SUBJECT PROPERTY

North Avenue NE

Parkway Drive NE

Value-Add Multifamily in the Heart of Atlanta

15 Units | Popular O4W Neighborhood

620 Parkway Drive NE, Atlanta, GA 30308

Disclaimer & Limiting Conditions

Bull Realty has been retained as the exclusive listing broker to arrange the sale of the Subject Property.

This Offering Memorandum contains selected information pertaining to the Property but does not purport to be all-inclusive or to contain all of the information that a prospective purchaser may require. All financial projections are provided for general reference purposes only and are based upon assumptions relating to the general economy, competition and other factors, which therefore, are subject to material change or variation. Prospective purchasers may not rely upon the financial projections, as they are illustrative only. An opportunity to inspect the Property will be made available to qualified prospective purchasers.

In this Offering Memorandum, certain documents, including financial information, are described in summary form and do not purport to be complete or accurate descriptions of the full agreements involved, nor do they constitute a legal analysis of such documents. Interested parties are expected to review independently all documents.

This Offering Memorandum is subject to prior placement, errors, omissions, changes or withdrawal without notice and does not constitute a recommendation, endorsement or advice as to the value of the Property by Bull Realty Inc. or the current Owner/Seller. Each prospective purchaser is to rely upon its own investigation, evaluation and judgment as to the advisability of purchasing the Property described herein.

Owner/Seller expressly reserve the right, at its sole discretion, to reject any or all expressions of interest or offers to purchase the Property and/or to terminate discussions with any party at any time with or without notice. Owner/Seller shall have no legal commitment or obligation to any purchaser reviewing this Offering Memorandum or making an offer to purchase the Property unless a written agreement for the purchase of the Property has been fully executed, delivered and approved by the Owner/Seller and any conditions to the purchaser's obligations therein have been satisfied or waived. The Seller reserves the right to move forward with an acceptable offer prior to the call for offers deadline.

This Offering Memorandum may be used only by parties approved by the Owner. The Property is privately offered, and by accepting this Offering Memorandum, the party in possession hereof agrees (i) to return it if requested and (ii) that this Offering Memorandum and its contents are of a confidential nature and will be held and treated in the strictest confidence. No portion of this Offering Memorandum may be copied or otherwise reproduced or disclosed to anyone without the prior written authorization of Bull Realty, Inc. or Owner/Seller. The terms and conditions set forth above apply to this Offering Memorandum in its entirety and all documents, disks and other information provided in connection therewith.

Table Of Contents

04	PROPERTY HIGHLIGHTS
05	PROPERTY INFORMATION
06	SURVEY
07	PONCE CITY MARKET & OLD FOURTH WARD
08	UNIT MIX
12	PHOTOS
13	MIDTOWN
17	ABOUT THE AREA
18	IN THE AREA
19	DEMOGRAPHICS
22	ATLANTA AT A GLANCE
23	BROKER PROFILES
24	ABOUT BULL REALTY
25	CONFIDENTIALITY AGREEMENT

CONTACT



ANDY LUNDSBERG
Partner, Bull Realty
Andy@BullRealty.com
404-876-1640 x 107



MICHAEL WESS, CCIM
Partner, Bull Realty
MWess@BullRealty.com
404-876-1640 x 150


BULL REALTY, INC.
50 Glenlake Parkway, Suite 600
Atlanta, GA 30328
BullRealty.com



Property Highlights

- True Intown value-add opportunity at a low-cost basis
- Prime Intown location in the highly sought after 04W neighborhood, walkable to Eastside Beltline Trail and Ponce City Market
- Minutes from Midtown and Downtown Atlanta
- Prominent early 1900's building at the traffic lit corner of North & Parkway
- Diverse unit mix with 9' ceilings throughout
- Large basement area, ideal for tenant storage units or onsite laundry
- Off-street parking in rear

Property Information



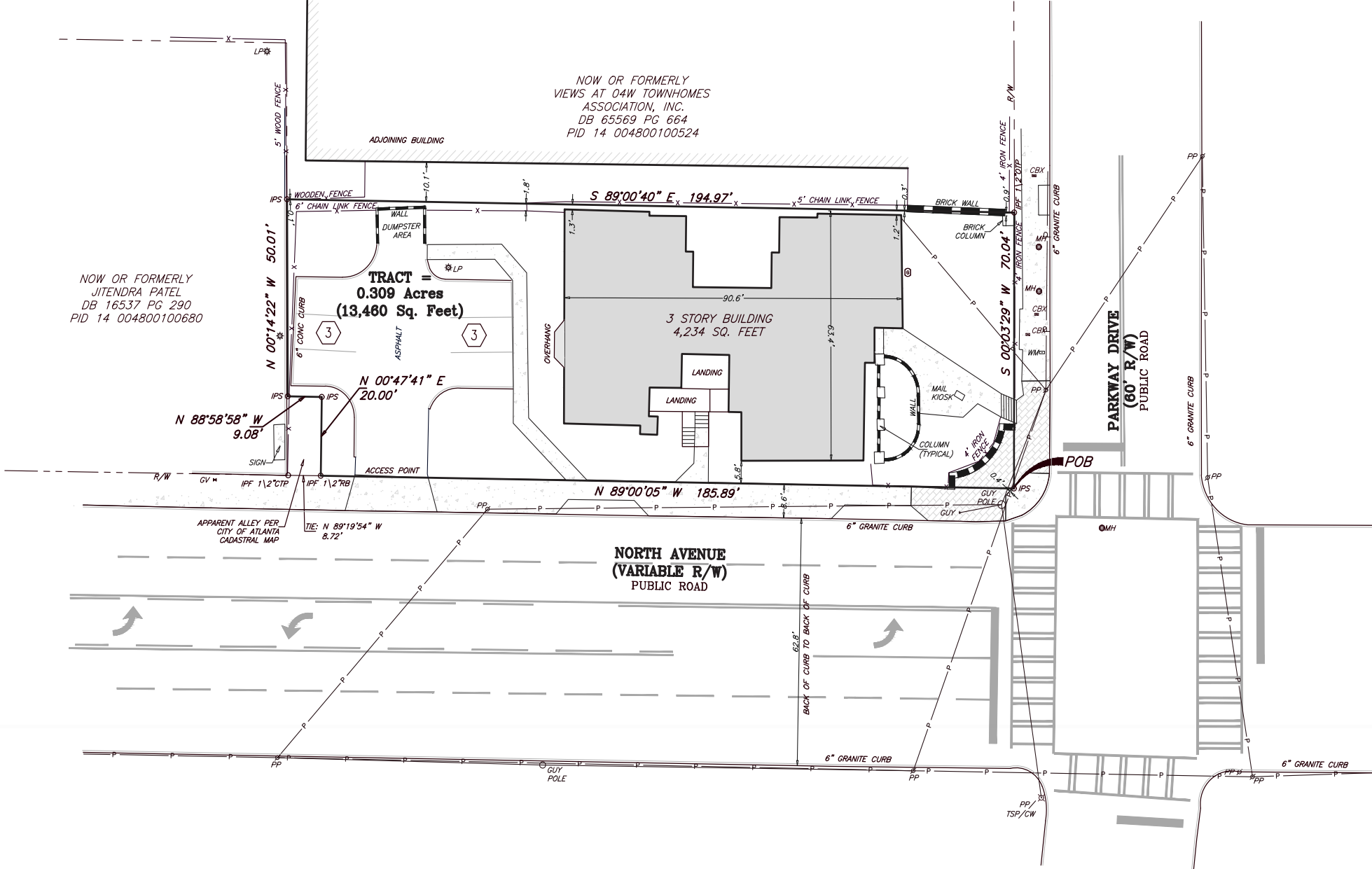
ADDRESS:	620 Parkway Drive NE Atlanta, GA 30308
COUNTY:	Fulton
SITE SIZE:	±0.35 AC
ZONING:	RG-4
YEAR BUILT:	~ 1940
BUILDING SIZE:	±17,845 SF
# OF FLOORS:	3
NO. OF UNITS:	15
OCCUPANCY:	100% vacant, ready for rehab
HVAC:	Central Air
ROOF:	Flat
UTILITES:	Separately-metered for electric & gas
PARKING:	6 Surface spaces



Sale Price | \$1,725,000

Per Unit | \$115,000

Survey

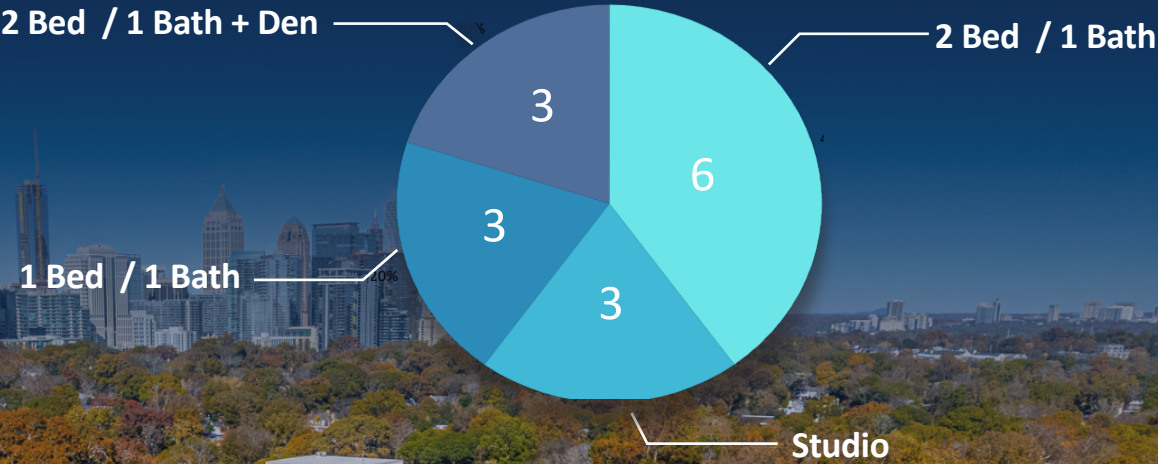




Steps From Ponce City Market And The Eastside Beltline Trail.

Unit Mix

UNITS	TYPE
6	2 Bed/1 Bath
3	2 Bed/1 Bath + Den
3	1 Bed/1 Bath
3	Studio













Midtown Being Just Minutes Away



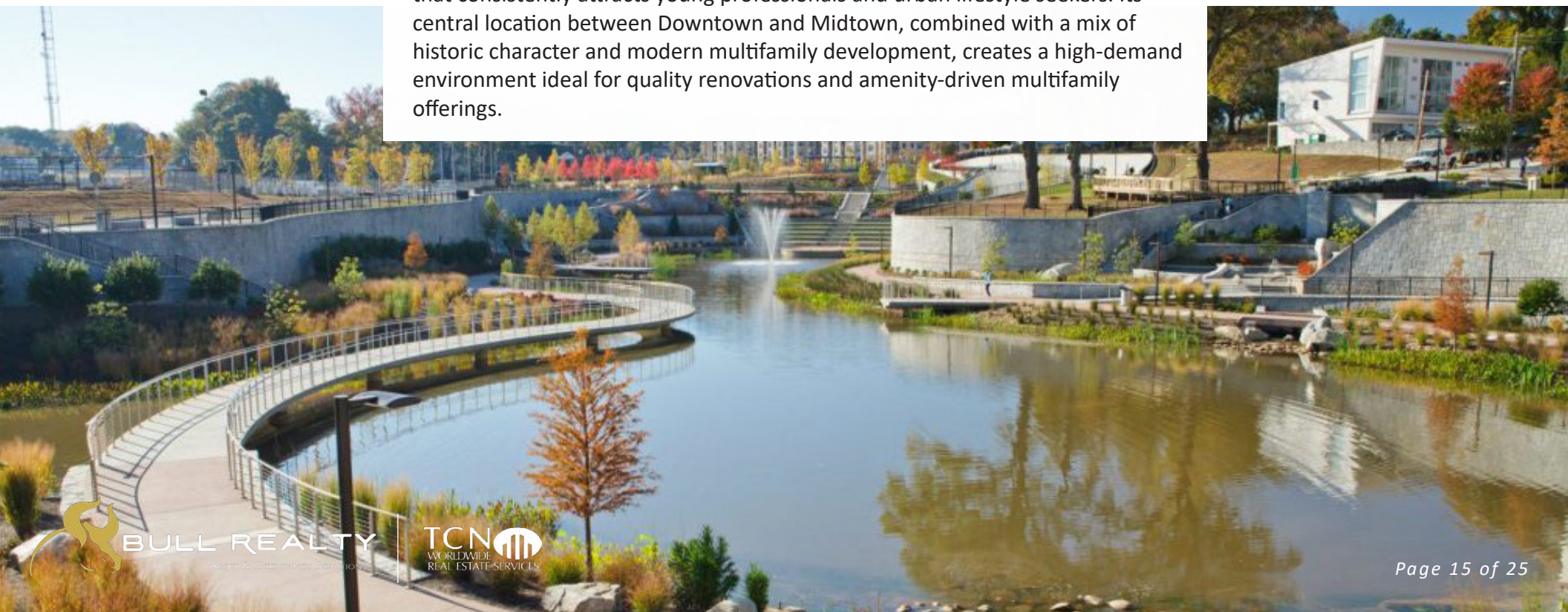
About The Area



04W

PONCE CITY MARKET

Old Fourth Ward is one of Atlanta's most vibrant and rapidly evolving in-town neighborhoods, known for its walkability, lifestyle amenities, and strong renter appeal. Anchored by Ponce City Market and the Beltline Eastside Trail, the area offers a concentrated mix of dining, retail, green space, and recreation that consistently attracts young professionals and urban lifestyle seekers. Its central location between Downtown and Midtown, combined with a mix of historic character and modern multifamily development, creates a high-demand environment ideal for quality renovations and amenity-driven multifamily offerings.



MIDTOWN

Midtown, Atlanta is a premier urban submarket that serves as a central hub for business, education, culture, and innovation. Strategically located between Downtown and Buckhead, Midtown offers unmatched connectivity via major thoroughfares and multiple MARTA rail stations, making it one of the most accessible and walkable areas in the city. It is home to a high concentration of Fortune 500 companies, leading law firms, tech startups, and major institutions such as Georgia Tech, Emory University Hospital Midtown, and the Federal Reserve Bank of Atlanta.

The district features a strong live-work-play environment supported by high-end residential options, renowned cultural attractions like the Fox Theatre and High Museum of Art, and expansive green space at Piedmont Park. Continued investment and mixed-use development have fueled growth and strengthened Midtown's appeal among both residents and businesses. With a highly educated workforce, growing population, and strong economic fundamentals, Midtown remains one of Atlanta's most desirable submarkets for long-term investment and development opportunities.

Georgia Tech is a top-ranked public research university in Atlanta, known for its strong engineering, technology, and business programs.



The Fox Theatre offers unmatched historical ambiance, architectural grandeur, and a premier performing arts experience—making it a standout cultural asset.



Midtown, Atlanta features a vibrant retail scene with a mix of national brands, local boutiques, and dining options.



Bank of America Plaza is the tallest building in Atlanta and the Southeast, standing 1,023 feet tall. Located in Midtown, it features Class A office space, iconic architecture, and direct access to MARTA and major highways.



Mercedes-Benz Stadium is a state-of-the-art sports and entertainment venue home to the Falcons and Atlanta United.



Atlanta Beltline®

The Atlanta Beltline is one of the largest, most wide-ranging urban redevelopment programs in the United States. This network of public parks, multi-use trails, transit, and affordable housing along a historic

22-mile railroad corridor is enhancing mobility, connecting intown neighborhoods, and improving economic opportunity and sustainability. Meet the organizations moving the Atlanta BeltLine forward. Formed in 2005, Atlanta BeltLine Partnership is the nonprofit organization that helps keep the Atlanta BeltLine vision on track by enabling the construction of more parks and trails; engaging the public through tours, health and fitness programs, and special events; and empowering Atlanta BeltLine residents to connect with affordable housing, economic development and a healthy lifestyle.



33

miles of multi-use,
urban trails

5,600

units of affordable
workforce housing

1,100

acres of
environmental
clean-up

50,000

permanent jobs

46

miles of improved
streetscapes

\$10

billion in economic
development

In The Area

PIEDMONT PARK

Piedmont Park is a 189-acre urban park located in Atlanta, GA, offering a peaceful retreat from the city. Designed by Joseph Forsyth Johnson in the late 19th century, it features meadows, a lake, and plenty of greenery. The park hosts events, festivals, and recreational activities throughout the year, including jogging trails, sports fields, and the Atlanta Botanical Garden. Its central location in Midtown Atlanta provides skyline views, making it a popular spot for picnics and gatherings.



MIDTOWN

Midtown Atlanta is a vibrant and rapidly growing urban district that serves as a key center for business, education, and culture. It hosts a concentration of major corporations, tech firms, and prestigious institutions like Georgia Tech. Known for its walkability and strong public transit access, Midtown offers a dynamic mix of residential neighborhoods, retail, dining, and entertainment options, including theaters, galleries, and parks—making it one of Atlanta's most sought-after live-work-play communities.



EMORY UNIVERSITY HOSPITAL

Emory University Hospital in Atlanta is a top academic medical center known for advanced care in cardiology, oncology, neurology, and transplants. It's home to Georgia's largest transplant center and a specialized infectious disease unit in partnership with the CDC. The hospital is nationally recognized for excellence in patient care and medical research.



HISTORIC OLD FOURTH WARD

Historic Old Fourth Ward (O4W) in Atlanta is a vibrant neighborhood that seamlessly blends rich history with modern urban living. Situated just east of downtown, it is renowned as the birthplace of Dr. Martin Luther King Jr. and is home to significant landmarks such as the Martin Luther King Jr. National Historical Park, Ebenezer Baptist Church, and the Sweet Auburn Historic District.



PONCE CITY MARKET

Ponce City Market, is a vibrant mixed-use development in the restored Sears, Roebuck & Co. building. It features a diverse array of retailers, an expansive Central Food Hall with gourmet and casual dining options, and unique artisanal products. The rooftop, Skyline Park, offers panoramic city views, mini-golf, carnival games, and a beer garden. Connected to the Atlanta BeltLine, it encourages exploration of the surrounding area. With its blend of historic charm and modern amenities, Ponce City Market is a beloved destination for locals and tourists alike.



ATLANTA BOTANICAL GARDEN

The Atlanta Botanical Garden, spans 30 acres within Piedmont Park. Established to showcase an array of plants from around the world, it offers visitors a tranquil escape in the heart of the city. The garden features themed areas like the Japanese Garden and the Desert House, as well as seasonal displays and sculptures. With its central location and lush greenery, the Atlanta Botanical Garden provides a serene retreat in Midtown neighborhood.



Demographic Overview

The figure displays a map of Atlanta, Georgia, centered on downtown. Three concentric circles are drawn around the center, representing distances of 1 mile, 3 miles, and 5 miles. The areas within these circles are shaded in light yellow. A blue star marks the center point.

POPULATION

Distance	Population
1 MILE	43,113
3 MILES	213,658
5 MILES	430,381

OF HOUSEHOLDS

Distance	Households
1 MILE	31,373
3 MILES	121,968
5 MILES	234,270

AVG. HOUSEHOLD INCOME

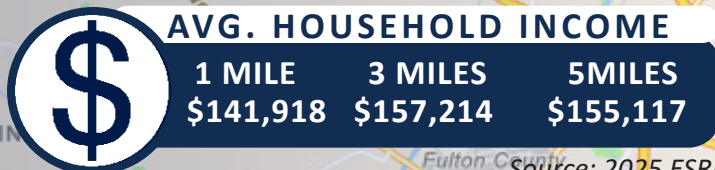
Distance	Avg. Income
1 MILE	\$141,918
3 MILES	\$157,214
5 MILES	\$155,117

Source: 2025 ESRI

BULL REALTY
ASSET & OCCUPANCY SOLUTIONS

TCN
WORLDWIDE
REAL ESTATE SERVICES

Page 19 of 25



A map of Atlanta, Georgia, centered on a blue star. Three concentric circles are drawn around the star, representing distances of 1 mile, 3 miles, and 5 miles. The 1-mile circle is the innermost, followed by the 3-mile circle, and then the 5-mile circle. The map shows major highways including I-75, I-85, and I-20. Various neighborhoods and landmarks are labeled, such as North Decatur, Druid Hills, Gresham Park, and John Lewis Plaza. The map also shows major roads like Marietta Rd NW, Northside Dr NW, and Boulevard SE.

ATLANTA

AT A GLANCE

BUSINESS-FRIENDLY CITY

Atlanta, the capital and most populous city in Georgia, is the ninth-largest metro in the United States with over 5.9 million residents. It prides itself on its low business costs, tax-friendly environment, diverse economy and suburb quality of life. Encompassing a GDP over \$270 billion, the Atlanta metropolitan area is a true “world city.”

WORLD-CLASS EDUCATION

Atlanta colleges and universities are numerous, spanning from historically black colleges, technical colleges, top research institutions and schools of art, medicine and theology. The region ranks in the top 10 among U.S. metros in students enrolled, research spending and degrees earned. Colleges and universities in the Atlanta region create 130,000 jobs across all industries in Georgia. Colleges and Universities in the Atlanta region include Georgia Institute of Technology, Emory University, Georgia State University, Agnes Scott College, Oglethorpe University, Clark Atlanta University (HBCU), Morehouse College (HBCU) and Spelman College (HBCU).

ATTRACTIONS AND TOURISM

Attractions in Atlanta include the largest aquarium in the western hemisphere, the CNN Center, the Fox Theater, the King Center and the new \$1.5 billion home of the Atlanta Falcons football franchise, Mercedes-Benz Stadium. Hartsfield-Jackson Atlanta International Airport is the world’s busiest airport, making the city a hub for business and tourism travelers alike.



**#1 TOP TRAVELED
AIRPORT IN THE WORLD**



**\$270 BILLION GDP
IN METRO-ATLANTA**



**13 FORTUNE 500
HQ IN ATLANTA**



**TOP U.S. METRO
WITH #1 LOWEST COST
OF DOING BUSINESS**

**TOP 10 AMONG U.S. METROS IN
STUDENTS ENROLLED, RESEARCH
SPENDING AND DEGREES EARNED.”**

- DISCOVER ATLANTA



**#9 LARGEST METRO AREA IN
THE U.S. 2020**

- U.S. CENSUS BUREAU
POPULATION DIVISION

HOME TO 16 FORTUNE 500 COMPANIES

Atlanta has the third-highest concentration of Fortune 500 headquarters in the U.S., and over 75% of the Fortune 1000 conduct business in the Atlanta Metropolitan Area. The city is the global headquarters of corporations such as The Coca-Cola Company, The Home Depot, Delta Air Lines, AT&T Mobility, UPS and Newell-Rubbermaid.

CONTINUOUS ECONOMIC DEVELOPMENT

The city's continuous growth is expected to continue with recently executed or announced corporate relocations such as UPS, Mercedes-Benz, NCR, Honeywell, and General Electric. Atlanta has also become a mega center for movie production due to tax credits implemented in 2008.

9TH
LARGEST U.S. METRO
2024 U.S. Census

1.8%
PROJECTED 5-YEAR
POPULATION GROWTH (2023-2028)
ESRI 2025

#6
BEST CITIES FOR JOBS IN U.S.
WalletHub 2024

#3
FASTEST GROWING
U.S. METRO
Freddie Mac 2024

46%
Gen Z
Population

34%
Millennial
Population

3.9%
Unemployment
Rate

(Data based on 1 mile radius of Downtown- ESRI 2024)

MAJOR EMPLOYERS

KING & SPALDING



Mercedes-Benz



#1 TOP EMERGING TECH HUB

-Business Facilities magazine, GA Dept. of Economic Growth 2024

#3 BEST CITY IN THE SOUTH

-Southern Living, "The South's Best Cities, 2024"

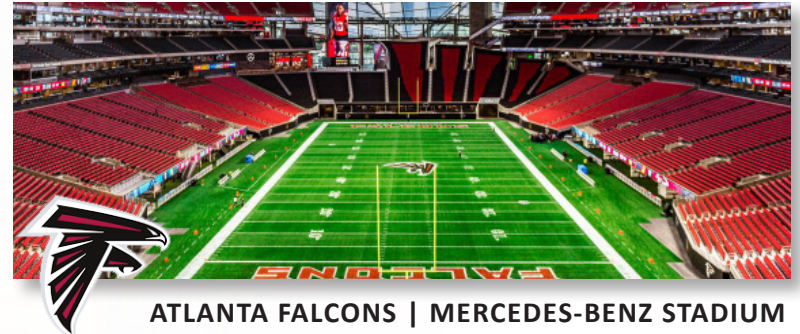
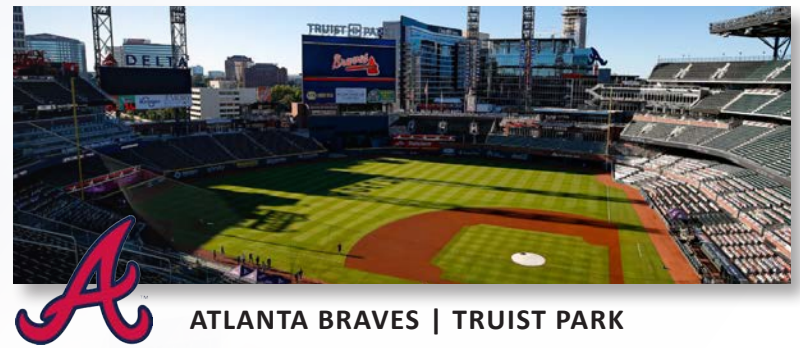
#5 MOVING DESTINATION IN THE NATION

-Penske, "Annual Top Moving Destinations List, 2024"

Atlanta is an exciting destination with world-class restaurants, a festive nightlife, several major league sports teams and an abundance of cultural attractions. Atlanta's arts and culture scene is complemented by in-town neighborhoods that give the city even more depth.

Home to the second busiest and most efficient airport in the world, Hartsfield-Jackson Atlanta International Airport, and the Maynard H. Jackson International Terminal, getting to and from Atlanta is easy.

The metro Atlanta area is home to 13 Fortune 500 and 24 Fortune 1000 headquarters. This includes the global headquarters of corporations such as The Coca-Cola Company, The Home Depot, Delta Air Lines, AT&T Mobility, UPS, Truist Bank, Mercedes Benz USA, Newell-Rubbermaid and is home to the world renowned Center for Disease Control.

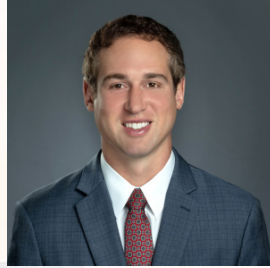


Team Profile



ANDY LUNDSBERG

Partner
Andy@BullRealty.com
404-876-1640 x 107



MICHAEL WESS, CCIM

Partner
MWess@BullRealty.com
404-876-1640 x 150



AUBRI FRANKLIN
MARKETING



TORI ROBB
MARKETING



CARLEIGH PALUMBO
MARKETING



MEGAN MURPHY
MARKETING

ABOUT BULL REALTY

MISSION

To provide a company of advisors known for integrity and the best disposition marketing in the nation.

SERVICES

Disposition, acquisition, project leasing, tenant representation and consulting services.

SECTORS OF FOCUS

Office, retail, industrial, multifamily, land, healthcare, senior housing, self-storage, hospitality and single tenant net lease properties.

GLOBAL ALLIANCE

Bull Realty is a member of TCN Worldwide, an alliance of 60+ offices and 1,500 commercial real estate professionals serving more than 200 markets globally. This partnership expands the firm's reach, client access and investor relationships across the U.S. and internationally.

AMERICA'S COMMERCIAL REAL ESTATE SHOW

The firm produces the nation's leading show on commercial real estate topics, America's Commercial Real Estate Show. Industry economists, analysts and leading market participants — including Bull Realty's founder Michael Bull, CCIM — share market intel, forecasts and strategies. The weekly show is available to stream wherever you get your podcasts or at www.CREshow.com.

JOIN OUR TEAM

Bull Realty continues to expand through merger, acquisition and by welcoming experienced agents. The firm recently celebrated 27 years in business and, through its TCN Worldwide alliance, actively works with clients and brokers across the country.

CONNECT WITH US:

<https://www.bullrealty.com/>



BULL REALTY
ASSET & OCCUPANCY SOLUTIONS

TCN
WORLDWIDE
REAL ESTATE SERVICES

28

YEARS IN
BUSINESS



ATL
HEADQUARTERED IN
ATLANTA, GA

LICENSED IN
8
SOUTHEAST
STATES



Confidentiality Agreement

This Confidentiality Agreement ("Agreement") is made and agreed to for the benefit of the undersigned party ("Receiving Party"), the owner of the subject property (the "Seller") and undersigned broker Bull Realty Incorporated ("Broker").

Now therefore in consideration of the privileges granted to Receiving Party with respect to receiving certain confidential information, and other good and valuable consideration, the Receiving Party hereby agrees to the following:

I. Confidential Information:

Receiving Party will receive confidential information regarding property referred to as 620 Parkway Drive NE, Atlanta, GA 30308. Prospect agrees to not disclose to any person that the property may be available for sale or lease, or that discussions or negotiations are taking place concerning the property, nor any terms, conditions, or other facts with respect to the property, including but not limited to tenant information, lease rates, lease expirations, income and expenses, and any such possible purchase, including the status thereof. The term "person" used in this agreement shall be interpreted broadly and shall include, without limitation, any corporation, company, partnership or individual other than parties to which Broker approves in writing. Receiving Party may share information with directors, officers, employees, agents, affiliates, counsel, lending sources, accountants or representatives of Receiving Party that Receiving Party notifies of the requirements of this Agreement. Receiving Party agrees to not contact the property owner, the management, the tenants, the lender, the vendors, the insurers, the employees or the customers of any business at the site.

II. Acting as a Principal:

Receiving Party hereby warrants that it is acting as a principal only, and not as a broker, regarding this contemplated transaction. Receiving Party acknowledges that Broker is working an agency capacity as representing the Seller only in this transaction and is the only Broker involved in this potential transaction. Receiving Party agrees to not be involved in any arrangement to lease or purchase the property, in whole or in part, as a lender, partner, buyer of the note, buy in foreclosure, buy from bankruptcy court, or in any other manner acquire an investment in, joint venture or control of the property, unless Broker is paid a commission at closing as per separate agreement with Seller.

This agreement will expire two years from the date hereof.

III. Governing Law

This Agreement shall be governed and construed in accordance with the laws of the State of Georgia.

If you are a broker, or a principal desiring to include an outside broker, contact the listing agent directly for a Buyer and Buyer's Broker Confidentiality & Commission Agreement.

Accepted and agreed to this _____ day _____ of , 20__.

Receiving Party _____

Signature _____

Printed Name _____

Title _____

Company Name _____

Address _____

Email _____

Phone _____

ANDY LUNDSBERG
Partner, Bull Realty
Andy@BullRealty.com
404-876-1640 x 107

MICHAEL WESS, CCIM
Partner, Bull Realty
MWess@BullRealty.com
404-876-1640 x 150

BULL REALTY, INC.
50 Glenlake Parkway, Suite 600
Atlanta, GA 30328
BullRealty.com