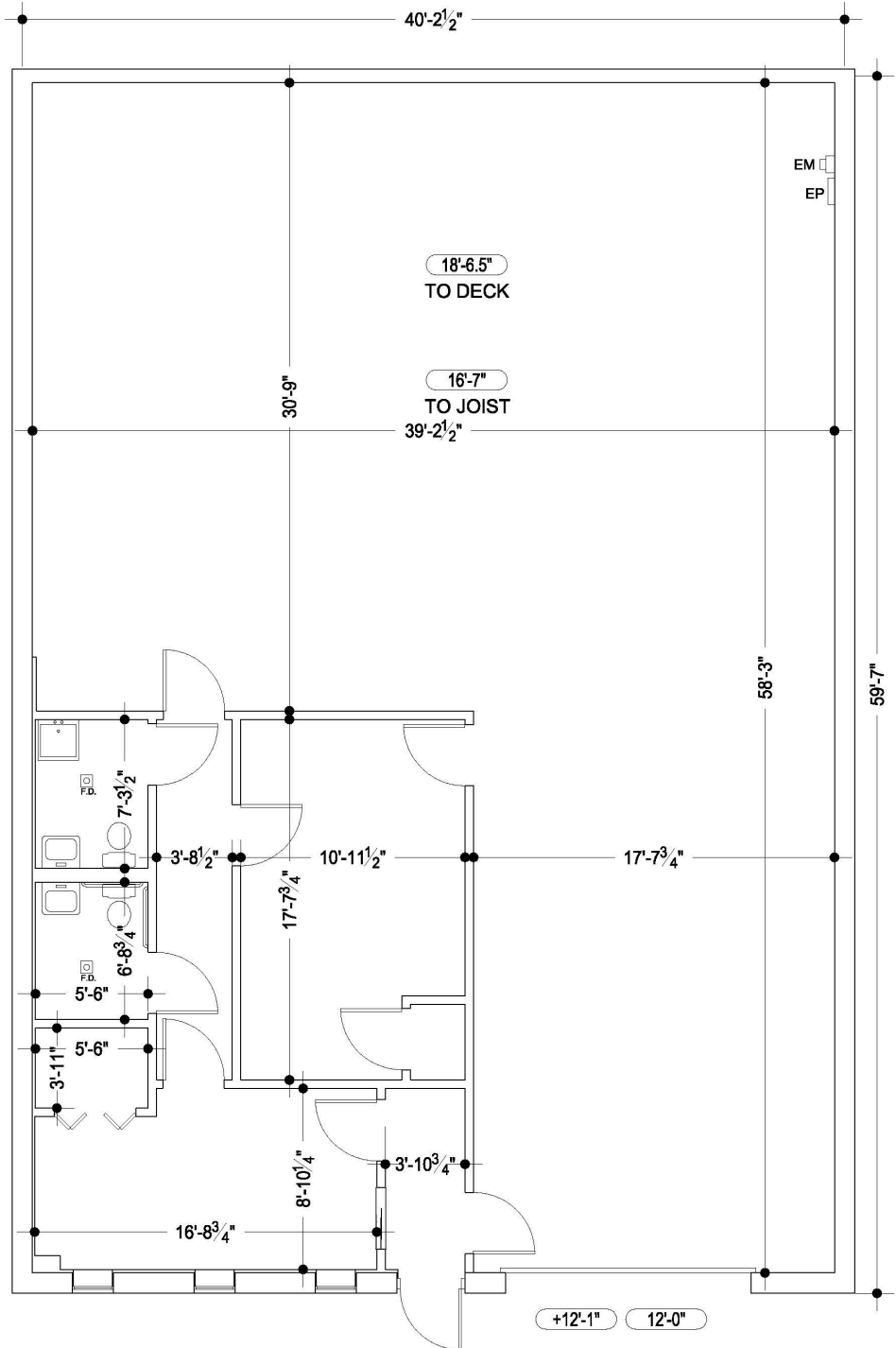


WEST BUILDING		EAST BUILDING	
22783	3,000 SF (776 SF office)	22827	6,000 SF (965 SF office)
22784	3,000 SF (776 SF office)	22828	6,000 SF (965 SF office)
22785	3,000 SF (776 SF office)	22829	6,000 SF (965 SF office)
22786	3,000 SF (776 SF office)	22830	6,000 SF (965 SF office)
22787	3,000 SF (776 SF office)	22831	6,000 SF (965 SF office)
22788	3,000 SF (776 SF office)	22832	6,000 SF (965 SF office)
22789	3,000 SF (776 SF office)	22833	6,000 SF (965 SF office)
22790	3,000 SF (776 SF office)	22834	6,000 SF (965 SF office)
22791	3,000 SF (776 SF office)	22835	6,000 SF (965 SF office)
22792	3,000 SF (776 SF office)	22836	6,000 SF (965 SF office)
22793	3,000 SF (776 SF office)	22837	6,000 SF (965 SF office)
22794	3,000 SF (776 SF office)	22838	6,000 SF (965 SF office)
22795	3,000 SF (776 SF office)	22839	6,000 SF (965 SF office)
22796	3,000 SF (776 SF office)	22840	6,000 SF (965 SF office)
22797	3,000 SF (776 SF office)	22841	6,000 SF (965 SF office)
22798	3,000 SF (776 SF office)	22842	6,000 SF (965 SF office)
22799	3,000 SF (776 SF office)	22843	6,000 SF (965 SF office)
22800	3,000 SF (776 SF office)	22844	6,000 SF (965 SF office)
22801	3,000 SF (776 SF office)	22845	6,000 SF (965 SF office)



Leased and Managed by:



Ari-El Enterprises, Inc.
 (248) 557-3800
 www.ari-el.com

NOVI INDUSTRIAL
22829 Heslip Drive
 NOVI, MI 48375

Approx. 2,400 sq. ft.
Approx. 618 sq. ft. Office area
1 - 12' Grade Level Door