

# 387 PARK AVE SOUTH

SPACES RANGING FROM  
1,000 - 14,000 RSF

ATCO  
A FAMILY OF REAL ESTATE COMPANIES

Colliers

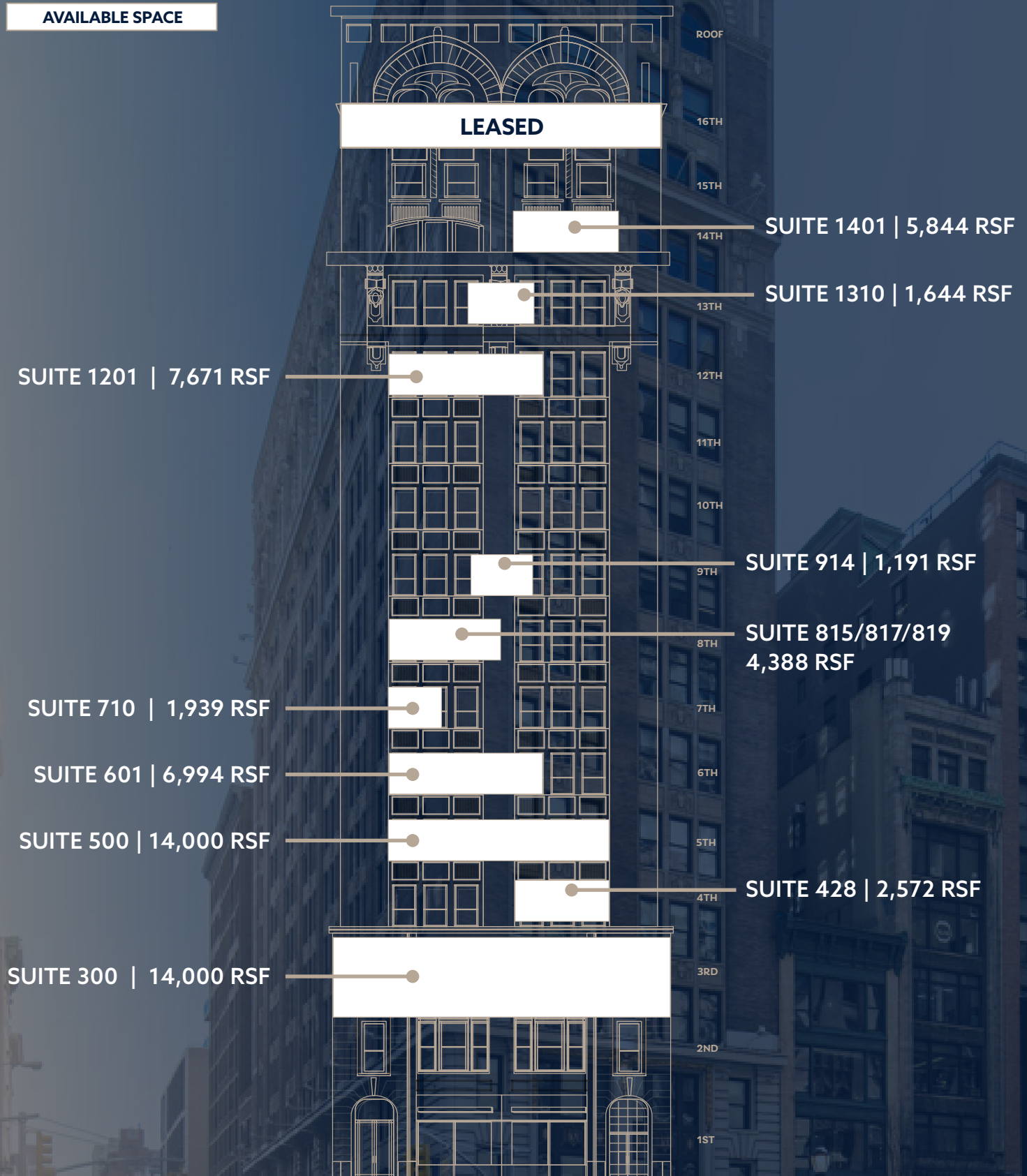


# 381 PARK AVE SOUTH

ATCO

Colliers

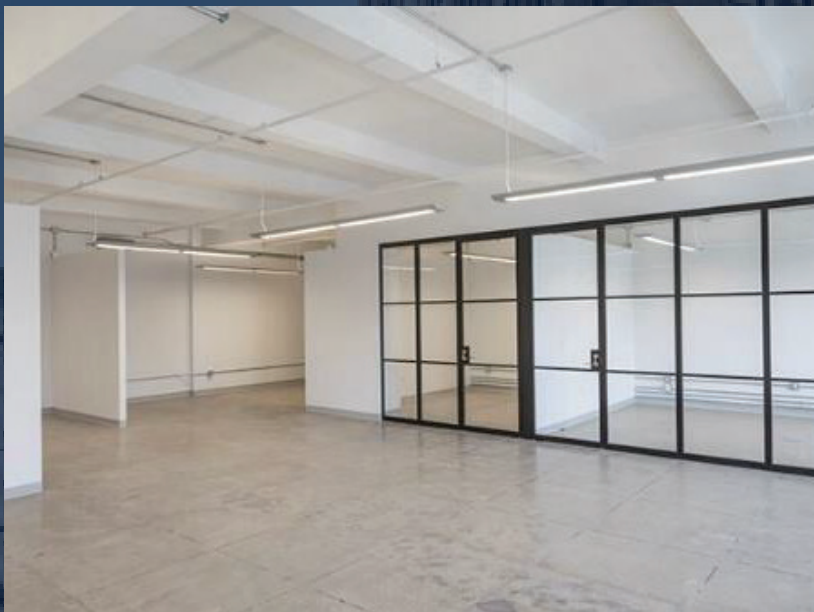
## AVAILABLE SPACE

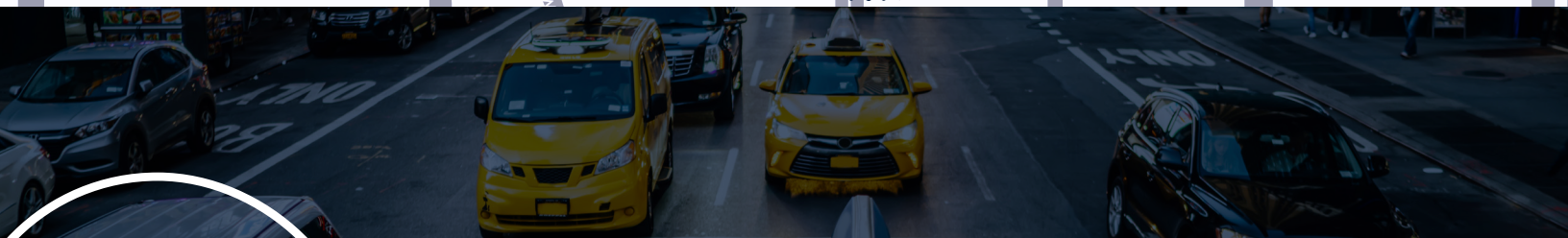
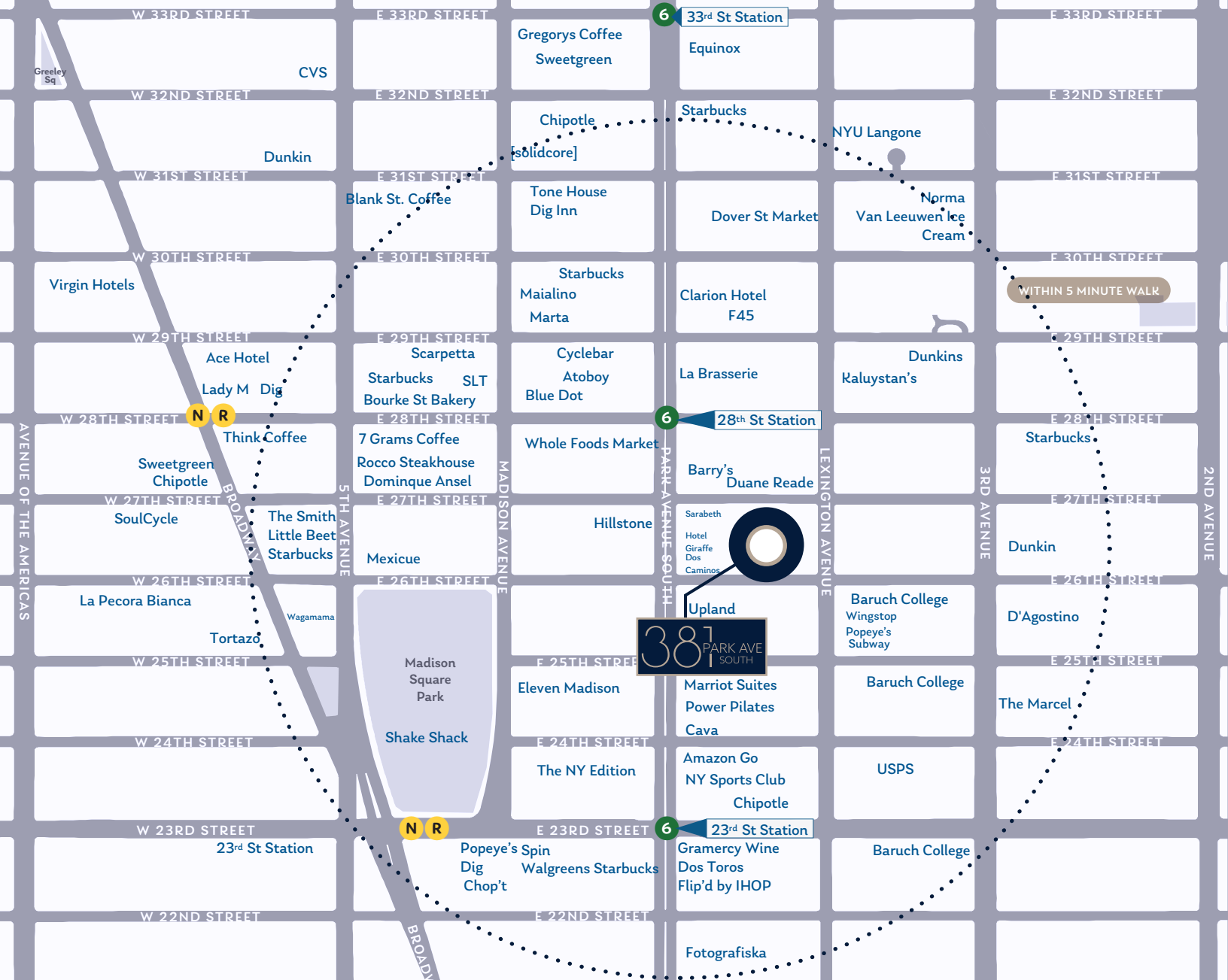




## BUILDING FEATURES

- Tenant-Controlled HVAC
- Sub-Metered Electric
- Close Proximity to the 6, R & W Trains
- Steps from Madison Square Park
- Within Talking Distance to Notable Hotels and Restaurants





Owned and operated by ATCO, **381 Park Avenue South** is a 17 floor (16 plus PH), **228,000+ SF** commercial office building located on Park Avenue South between 27th and 26th Streets in Manhattan's Flatiron District. This building was built in the early 1900's, and reflects the architecture of classical buildings. Celebrating the beauty of old New York, the terracotta façade is filled with complex fan arches, fluted spandrels, sills, jambs, lintels, ornate columns, and decorative urns. The building offers excellent northern and western views allowing for sunny exposures and flexible floorplates.



# 387 PARK AVE SOUTH

## ROBERT TUNIS

Vice Chair  
Licensed Associate Broker  
Robert.Tunis@Colliers.com  
+1 212 716 3818

## JOSEPH MANGIACOTTI

Senior Vice President  
Licensed Associate Broker  
Joseph.Mangiacotti@colliers.com  
+1 212 716 3516

## KYLE BERLINSKY

Associate  
Licensed Salesperson  
Kyle.Berlinsky@colliers.com  
+1 212 716 3650



No representation is made as to the accuracy of the information furnished herein and same is submitted subject to errors, omissions, change of prices, rental, or other conditions, prior sale, lease, sublease, and/or withdrawal without notice. While every attempt is made to ensure accuracy, the floor plan(s) is for guidance only. The measurements, dimensions, specifications, and other data shown are approximate and may not be to scale. We assume no responsibility for the accuracy of the floor plan(s) or for any action taken in reliance thereon. The floor plan(s) do not create any representation, warranty or contract. All parties should consult a professional, such as an architect, to verify the information contained herein. The furnishing of this information shall not be deemed a hiring. A commission in accordance with our principal's schedule of rates and conditions will be paid to the procuring Broker who executes our or our principal's brokerage agreement, subject to a fully consummated transaction upon terms and conditions acceptable to our principal. Colliers International NY, LLC