

*Storefront Office with Parking Included*

FOR LEASE

1625 NE WEIDLER STREET  
PORTLAND, OR 97232

+/-4,182 RSF

*PLEASE CALL FOR RATES*

JOSH BEAN, SIOR  
josh@ecacre.com

BRIAN HANSON, MREF  
brian@ecacre.com

503.205.0610



ETHOS COMMERCIAL ADVISORS LLC | 1111 NE FLANDERS ST, SUITE 201 | PORTLAND, OR 97232

These marketing materials do not constitute an offer to sell or lease, and do not constitute or contain promises, representations or warranties of any kind. The information in these marketing materials may contain approximations and images for illustration purposes. The owner, broker and their agents assume no risk or liability for inaccuracies, errors or omissions in these marketing materials. The terms and conditions of any transaction with respect to the property shall be contained exclusively in a written purchase and sale agreement or lease between the owner and the purchaser or tenant. Prospective purchasers or tenants should perform their own inspections of the property to verify its condition, permitted uses, and all other characteristics. | © 2025 Ethos Commercial Advisors LLC. All Rights Reserved. | 10.2.25



LICENSED IN OREGON, WASHINGTON, AND TEXAS



1625 NE Weidler Street is a commercial condominium offering excellent visibility and walkability. Built in 2005, the building features exposed brick construction and is located near established financial, healthcare, and retail services, offering strong synergy for users.

## LOCATION

Located at the intersection of NE 16th Avenue and NE Weidler Street, 1625 NE Weidler offers prominent visibility in Portland's Lloyd District. Just steps from Broadway and a short walk to the Moda Center and Lloyd Center, the property benefits from a dynamic mix of retail, dining, and residential density in the immediate area. With direct access to I-84, I-5, and NE Martin Luther King Jr. Boulevard, as well as multiple TriMet bus lines and light rail stations within blocks, this commercial condo is one of the most convenient and connected locations in the city.

## HIGHLIGHTS

- Two private ADA restrooms
- Five private / flex offices
- Two conference rooms
- Open office area
- Reception area
- Two exterior entrances
- Kitchen and break room
- Large mail / supply room

15 secure  
garage parking  
stalls included

Uses include:  
professional office,  
counseling, medical,  
or retail

Secure and direct  
building access

Highly visible  
location



Walk Score

93



Transit Score

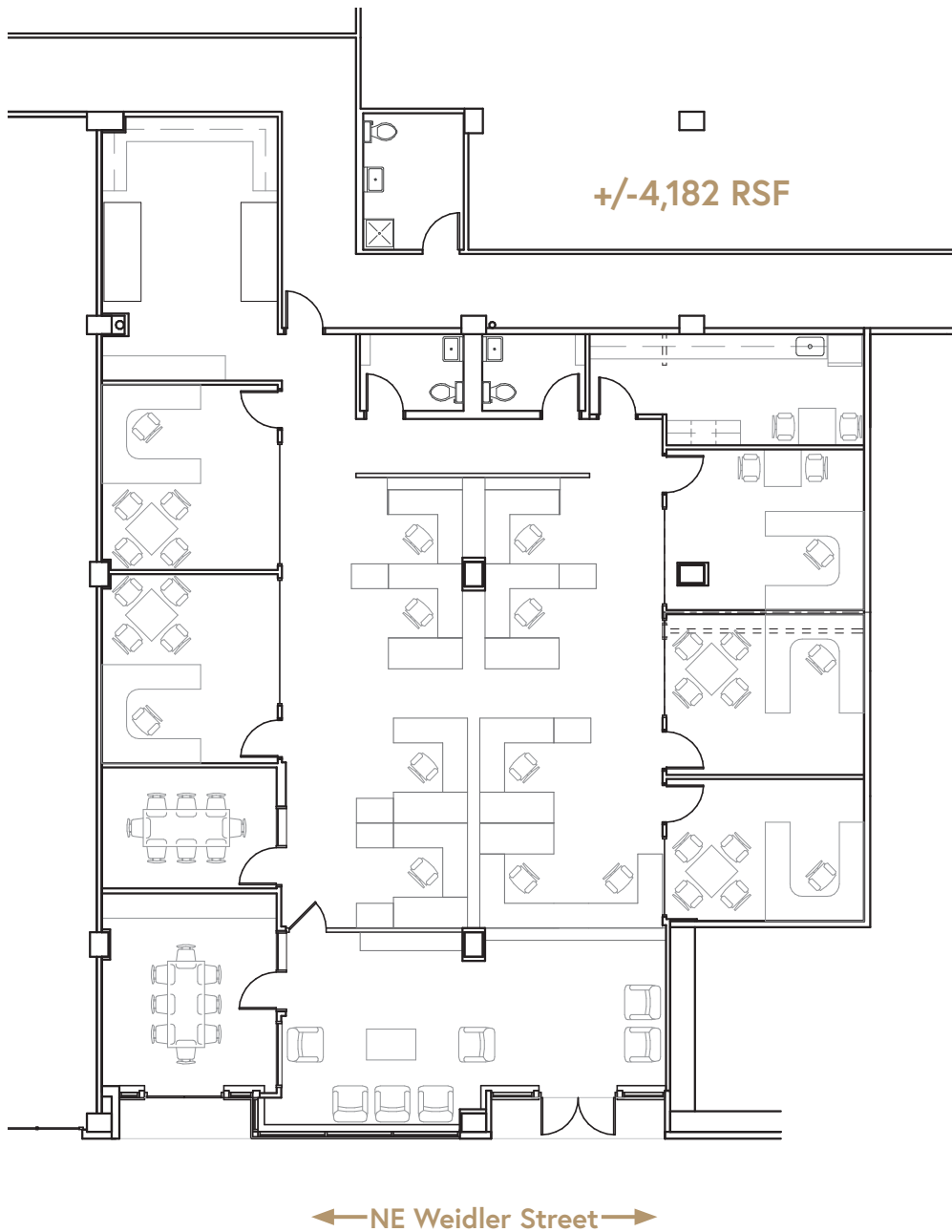
73



Bike Score

100





THIS DRAWING IS NOT TO SCALE AND IS FOR ILLUSTRATIVE PURPOSES ONLY. FURNITURE NOT INCLUDED.



# ★ 1625 NE Weidler Street | Portland, Oregon 97232

● Food and Drink

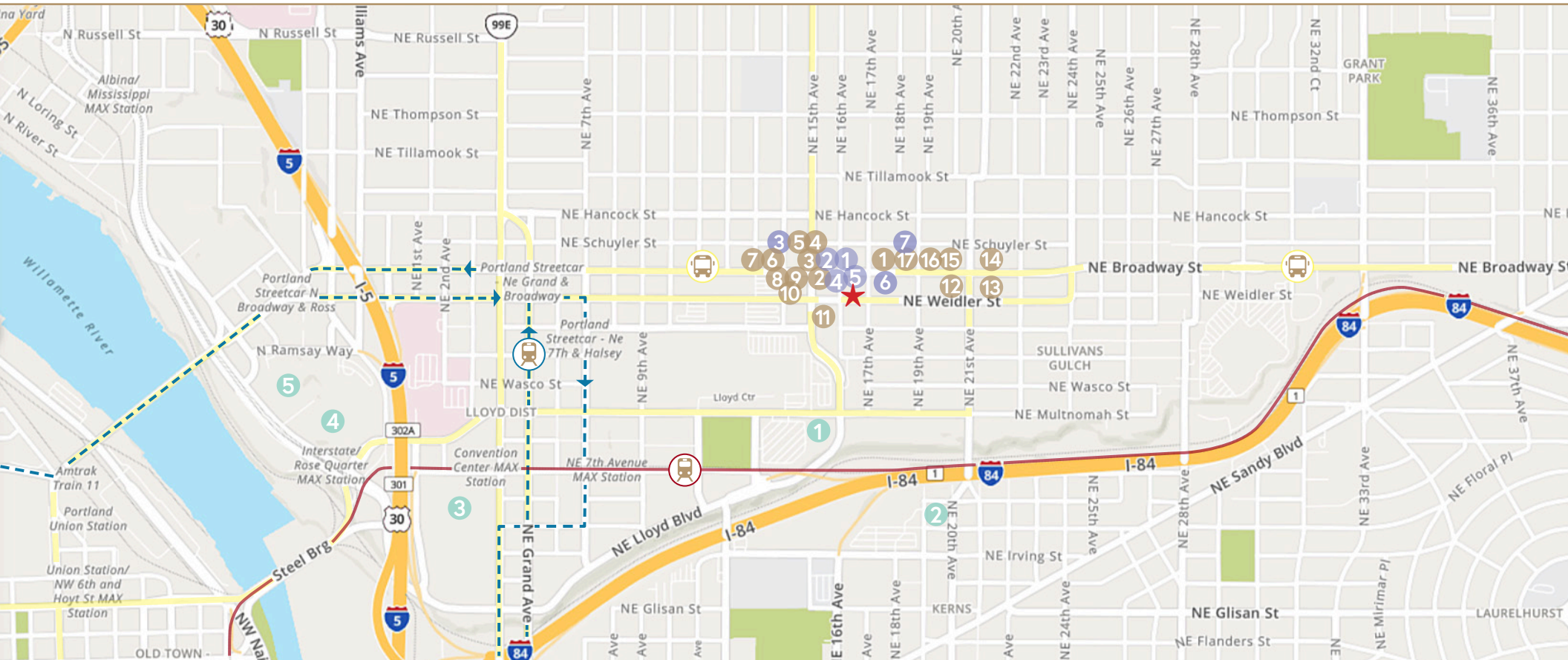
● Shopping

● Entertainment

MAX Lines

Streetcar Lines

Bus Routes



1. Helen Bernhard Bakery
2. McMenamins Pub
3. Peet's Coffee
4. Broadway Pizza Shoppe
5. Taste Tickler
6. Bluefin Tuna & Sushi
7. Milo's City Café

8. Sushi Ohana
9. Pastini Pastaria
10. Namaste Indian Cuisine
11. Koji Osaka Japanese Restaurant
12. Swift Lounge
13. Hop Haven Beer and Bottle Shop

14. Twisted Croissant
15. Thai Pod
16. Saint Simon Coffee Company
17. Cadillac Cafe

1. Plaid Pantry
2. Great Wine Buys
3. Footwise
4. Kitchen Kaboodle
5. Broadway Floral
6. Broadway Books
7. Sec Wines

1. Regal Cinemas Lloyd Center
2. Passinart Theater Co
3. Oregon Convention Center
4. Moda Center
5. Veterans Memorial Coliseum