



# PARKSIDE GLADSTONE

This new 10,512 SF development is at the heart of Gladstone. Build-to-suit options available.



- ✓ Mixed use will have 221 high-end multifamily units with dog park, pickle ball court, pool, courtyard, and garage and surface parking available, with \$1,000 - \$1,500/month rental rates
- ✓ 2 foot signage permitted with excellent visibility from N Oak Trafficway
- ✓ \$25/SF gross lease
- ✓ TI includes to white box
- ✓ Additional TI funding is available for earlier tenants
- ✓ Developer willing to oversee your TI process, saving supervisor/overhead costs to GC

Michael Meier, Principal/Realtor®

📞 913-271-7656

✉️ mmeier@aristocrat-realty.com

Sam Blacksher, Realtor®

📞 816-547-6219

✉️ samb@aristocrat-realty.com

Tahsha Hicks, Realtor®

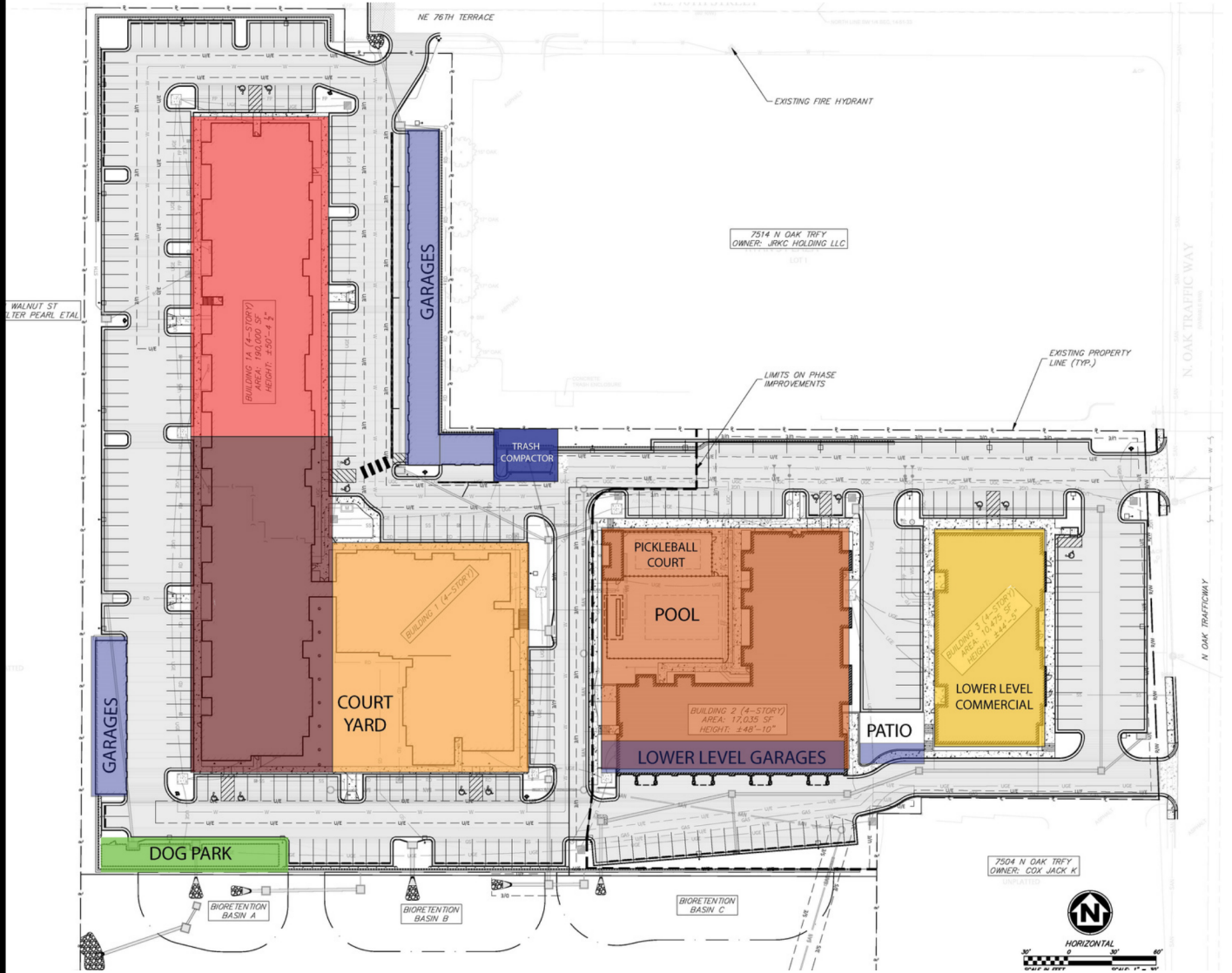
📞 816-349-5353

✉️ tahsha@aristocrat-realty.com

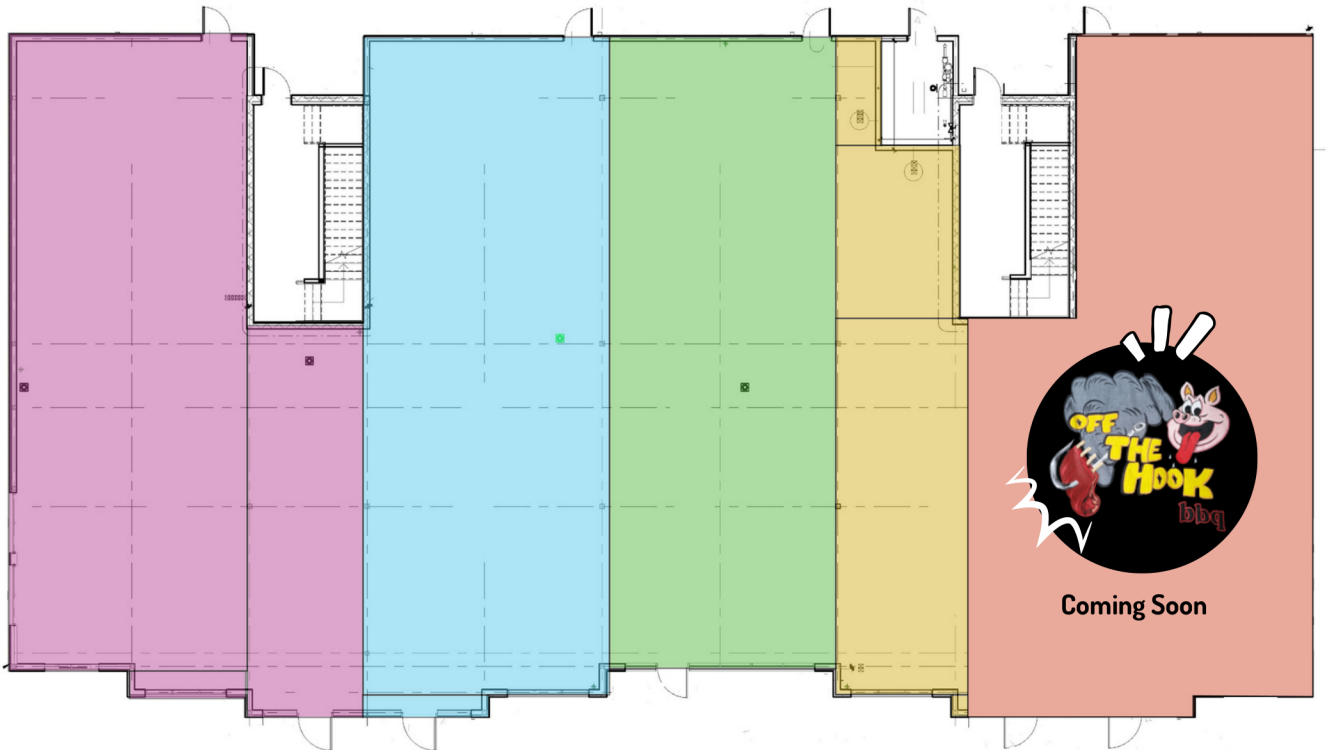
12200 N Ambassador Dr, Ste 103, KCMO 64163 | 816-200-7234 | info@aristocrat-realty.com



OVERALL SITE PLAN



LEASING NOW



1,392-7,962 SF AVAILABLE