

# PROFESSIONAL MEDICAL CENTER

1002 N. CHURCH STREET  
GREENSBORO | NORTH CAROLINA



## FOR LEASE

# PROPERTY OVERVIEW

## PROPERTY HIGHLIGHTS

- Four-story Class "A" building in a prominent location
- Excellent access and visibility directly across from Moses Cone Hospital
- Recent upgrades, deck and surface parking, and move-in ready medical office suites
- Conveniently located at the intersection of Wendover Avenue (Hwy 220) and N. Church Street
- Originally developed by a group of local physicians, has attracted medical professionals and medically-related tenants since its completion
- Total building area is 91,352 SF
- The building was built in 1999
- Suite 001, 103 and 203 are 2nd generation medical spaces
- Suite 10 is an open plan, ideal for an administrative use



**CONTACT:**  
ELAINE BOYLE  
919-348-7943  
elaine@FlagshipHP.com



### AVAILABLE SPACE:

Suite 001 - 3,898 SF  
Suite 10 - 1,633 SF  
Suite 103 - 6,916 SF  
Suite 203 - 1,546 SF



### LEASE RATE:

Suite 001 - \$23.00/SF  
Suite 10 - \$20.00/SF  
Suite 103 - \$23.00/SF  
Suite 203 - \$23.00/SF



### LEASE TYPE:

NNN

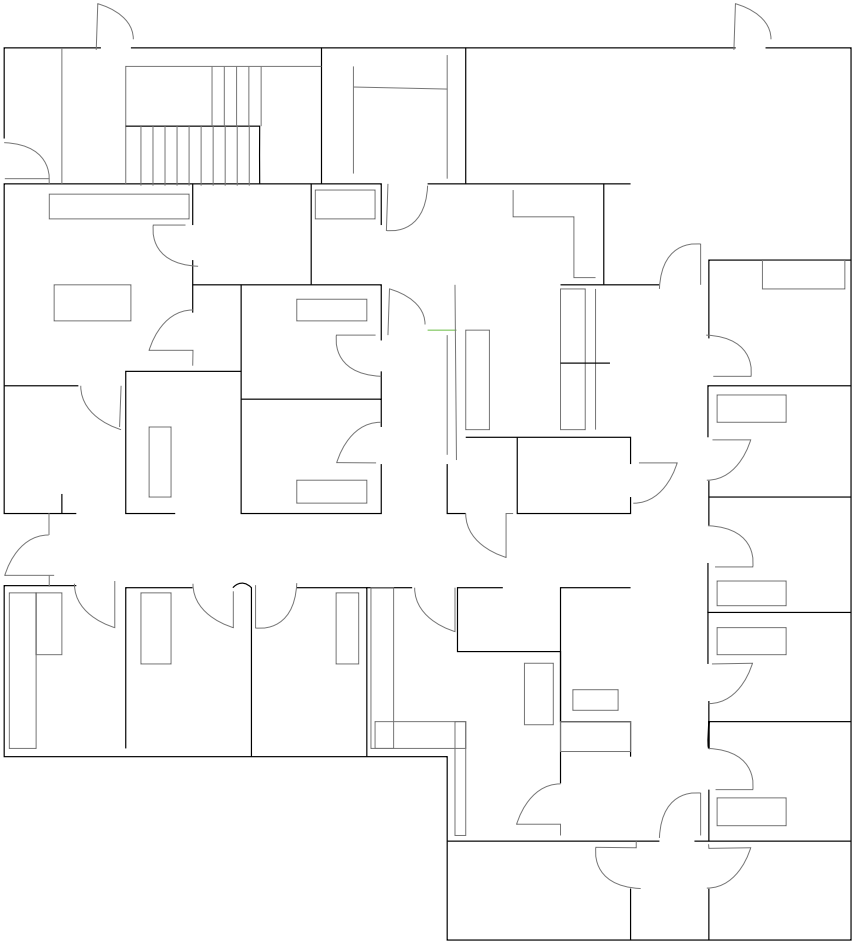


### AVAILABLE DATE:

Suite 001 - April 2026  
Suite 10 - Immediate  
Suite 103 - May 2027  
Suite 203 - April 2026

# FLOOR PLAN

## SUITE 001



**Suite 001:  
3,898 SF  
Available April 2026**

# SUITE 001 PHOTOS



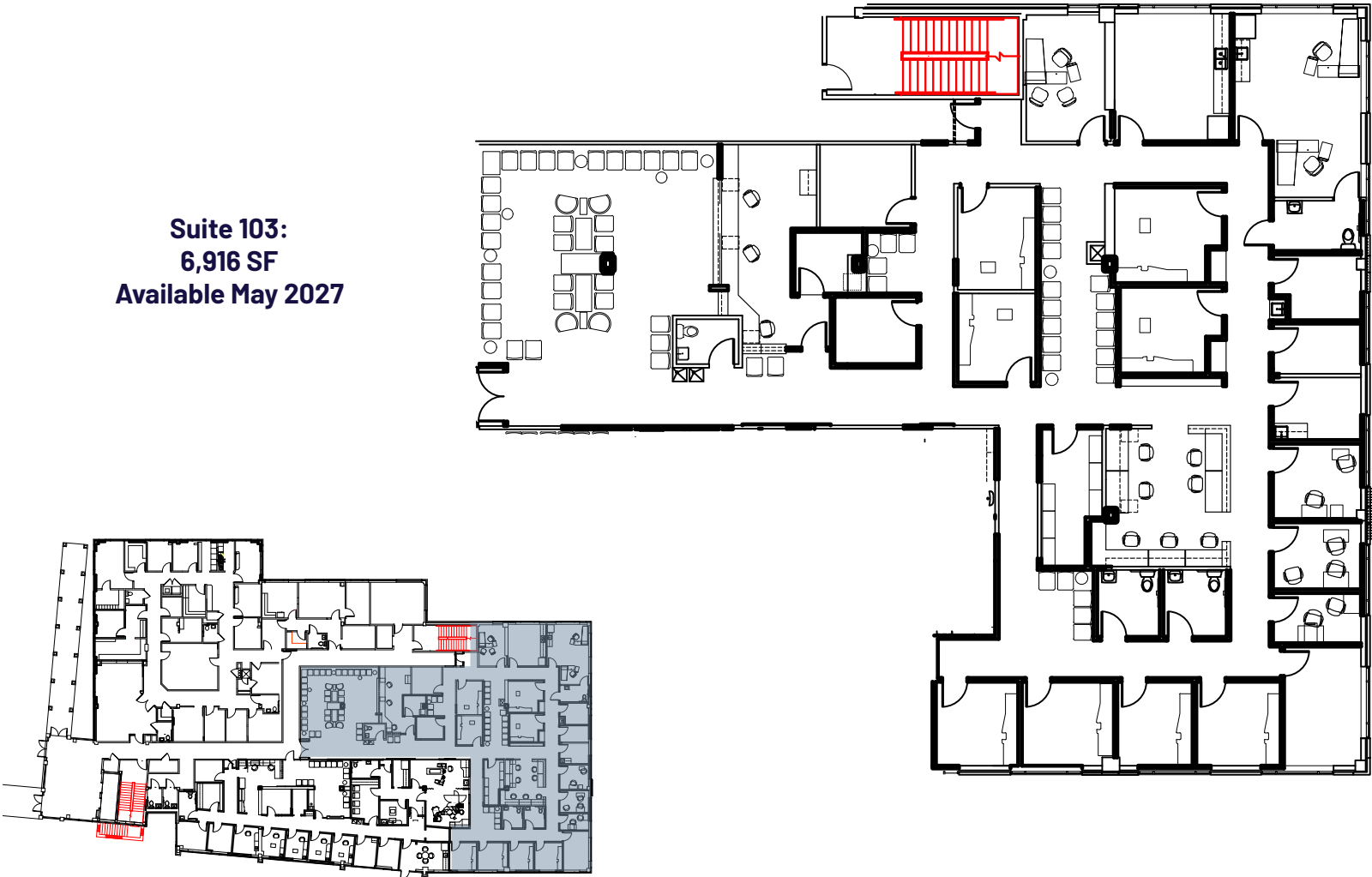
# SUITE 10 PHOTOS



# FLOOR PLAN

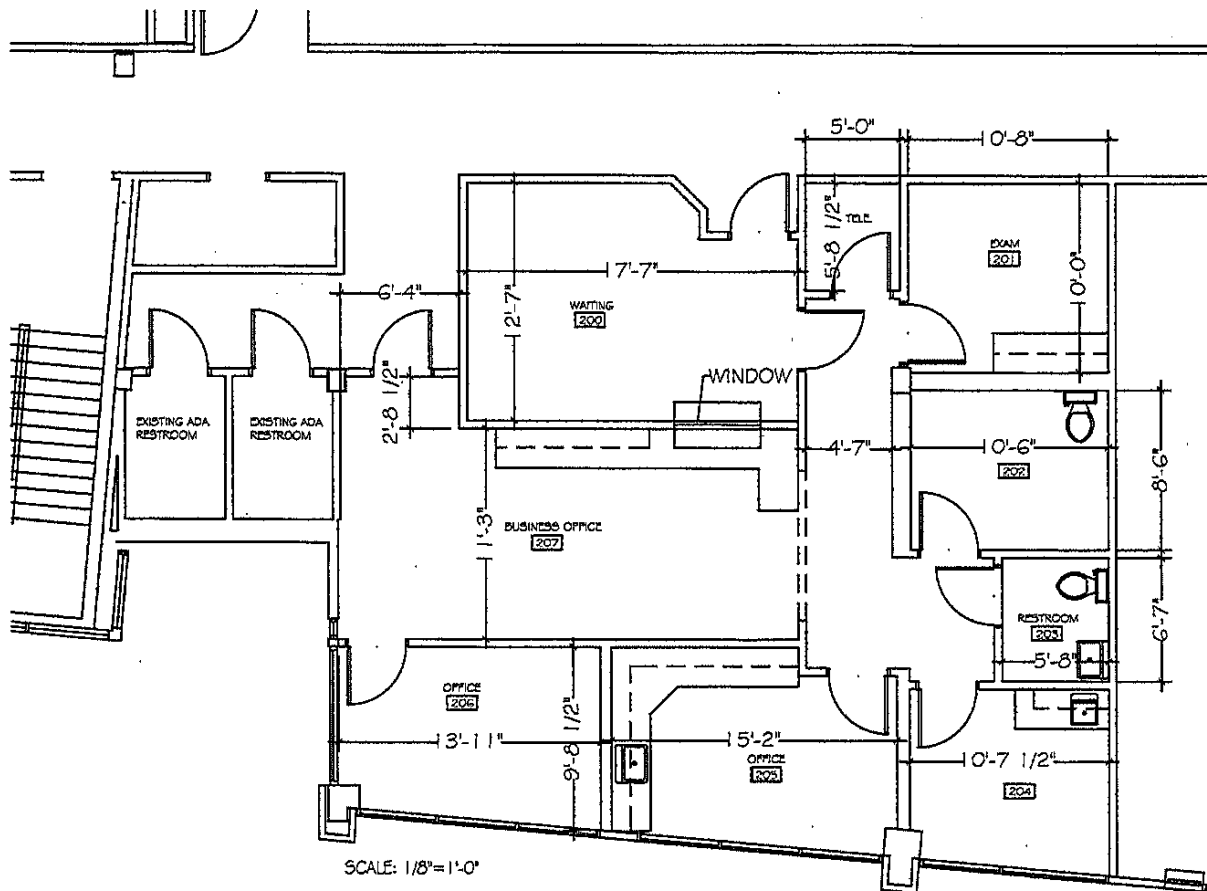
## SUITE 103

**Suite 103:  
6,916 SF  
Available May 2027**



# FLOOR PLAN

## SUITE 203



**Suite 203:**  
**1,546 SF**  
**Available April 2026**

# SUITE 203 PHOTOS



# AREA MAP



Golden Gate Shopping Center

Food Lion

Revolution Mill

CVS

Cone Health Moses Cone Hospital

Carolina Neurosurgery & Spine Associates  
McMillian Orthodontics

Cone Health OrthoCare

Dollar Tree

1002 N Church St.

Walgreens

E Wendover Ave

HearingLife of Greensboro

Office Depot

Sonic

Wendy's

Mango Dental

Elizabeth's Pizza

Cone Health Community Pharmacy

Yanceyville St

N Elm St

E Fisher Ave

Summit Ave

N Church St