

# UNIVERSITY BUSINESS CENTER I



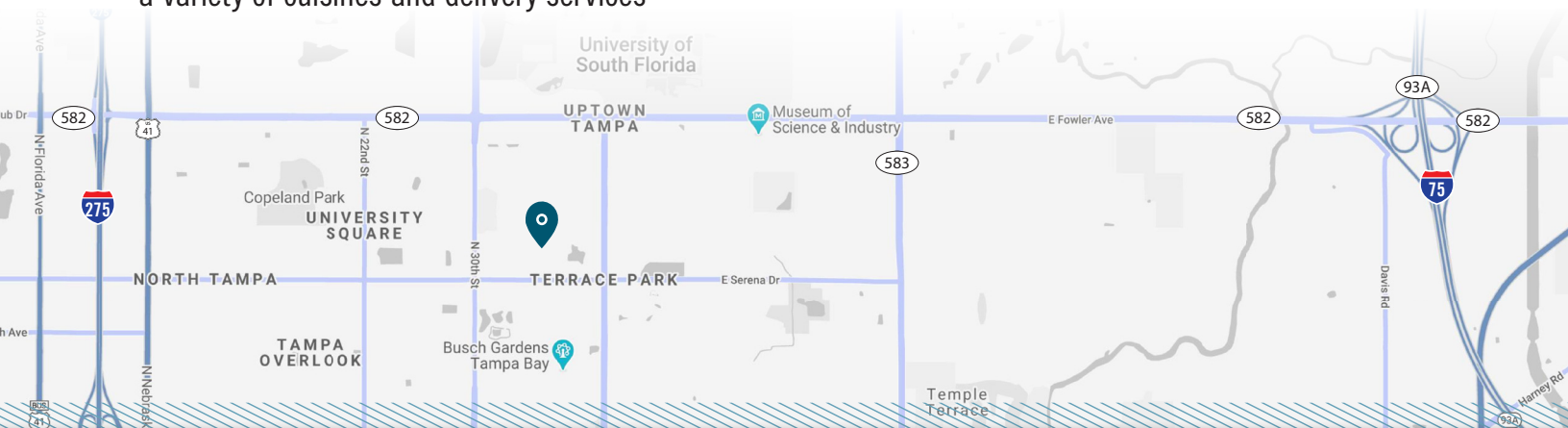
3011 University Center Drive | Tampa, FL 33612

## Office Space For Lease



### PROPERTY HIGHLIGHTS

- Suite 125: 6,000 - 18,215 SF Office Space
- Minutes from USF – Top 50 public/research university
- Located near Busch Gardens, MOSI, and an assortment of hotels and restaurants which offer a variety of cuisines and delivery services
- Easy access to I-275 & I-75, US 41, E. Fowler Avenue, Bruce B. Downs Blvd., E. Busch Blvd. (SR-580)
- Ample parking, Open floor plan
- Ideal space for a call center



LICENSED REAL ESTATE BROKER | [FranklinSt.com](http://FranklinSt.com)

**CHAD RUPP**  
Managing Director

📞 813.345.5891

✉️ [Chad.Rupp@FranklinSt.com](mailto:Chad.Rupp@FranklinSt.com)

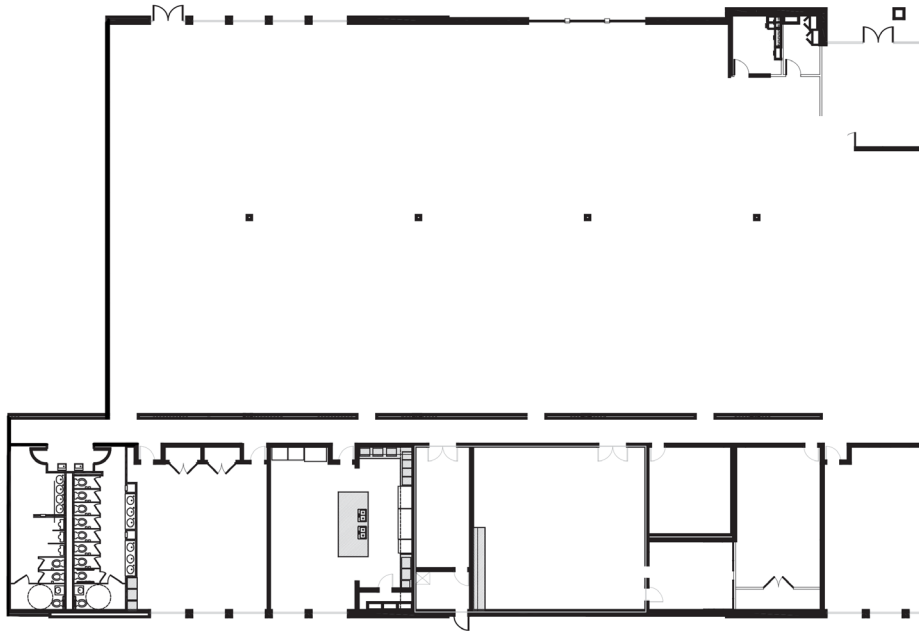
**MATT ALEXANDER**  
Director

📞 813.559.2006

✉️ [Matthew.Alexander@FranklinSt.com](mailto:Matthew.Alexander@FranklinSt.com)

# FLOOR PLAN

**SUITE 125**  
**6,000 - 18,215 SF**



## GETTING AROUND TAMPA

### Time from UBC

- Downtown Tampa ..... 15 mins
- Tampa Executive Airport ..... 20 mins
- Tampa International Airport ..... 25 mins
- St. Pete-Clearwater International Airport ..... 35 mins

