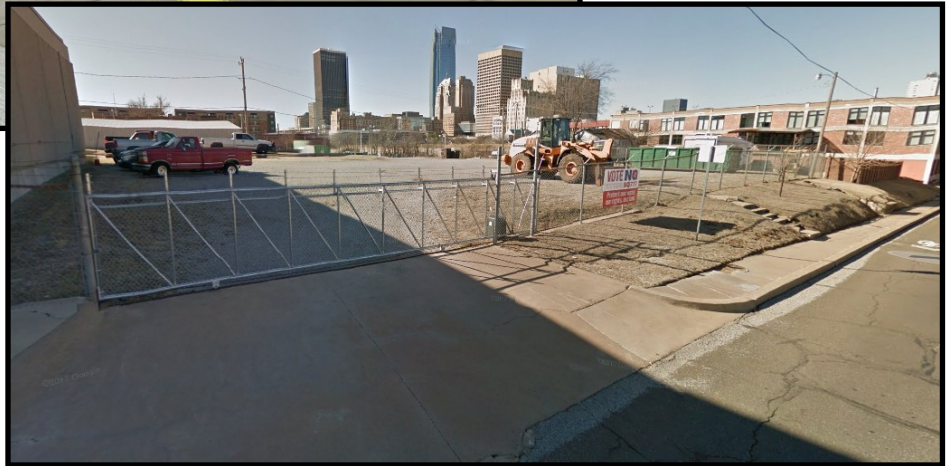
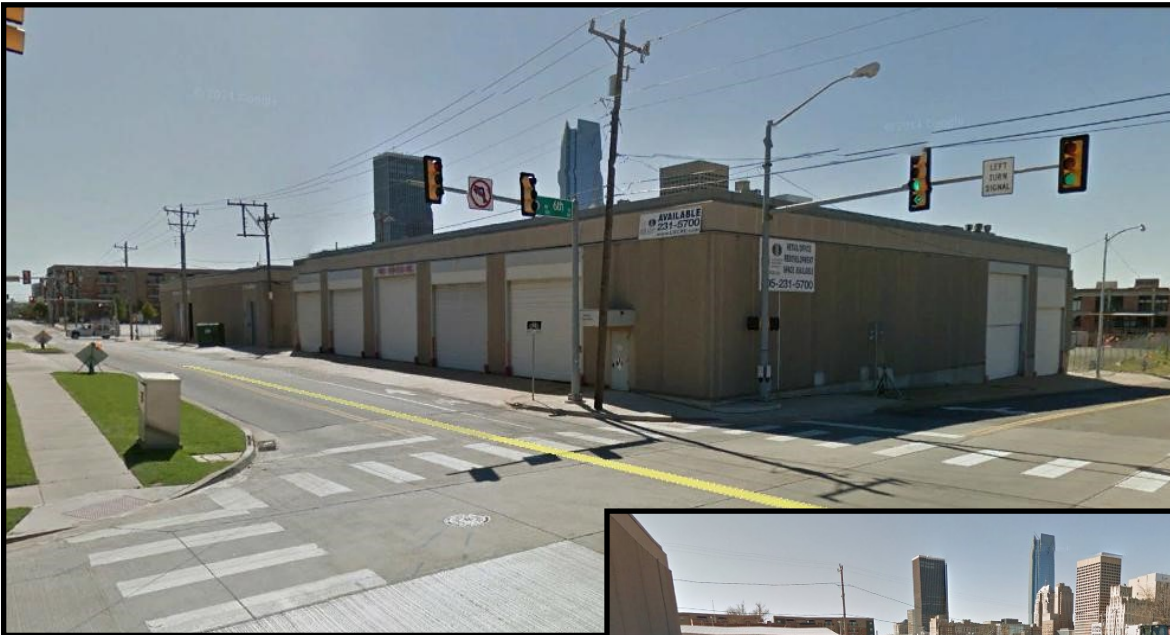


# FOR LEASE RETAIL/OFFICE/STORAGE

621 N Oklahoma, Oklahoma City, OK

16,000 SF



## PROPERTY INFORMATION:

- 16,000sf of Industrial/Retail Space
- DBD/Industrial zoning
- Large existing fenced yard - approx 22,000sf – 61,500sf
- 32,500sf of land directly behind building for parking or fenced yard
- Easy access from all major highways
- Five 14 foot bay doors on East wall grade level
- Two 14 foot bay doors on North wall grade level
- One 14 foot bay door on West wall grade level
- Ceiling height 16' at bottom chord
- Approx 14,000sf of open space, 2,000sf built out into rooms/offices
- Centrally located and close to several restaurants, OU medical, Saint Anthony's, Bricktown, State Capitol, Automobile Alley District, the Memorial, and Chesapeake Arena.



**FOR MORE INFORMATION  
CONTACT:**  
**Troy Humphrey - 405.219.7500**  
thumphrey@LRCRE.com

114 N.W. 6<sup>th</sup> Street, Suite 206  
Oklahoma City, OK 73102  
Office: 405.231.5700  
Facsimile: 405.231.5701  
www.LRCRE.com

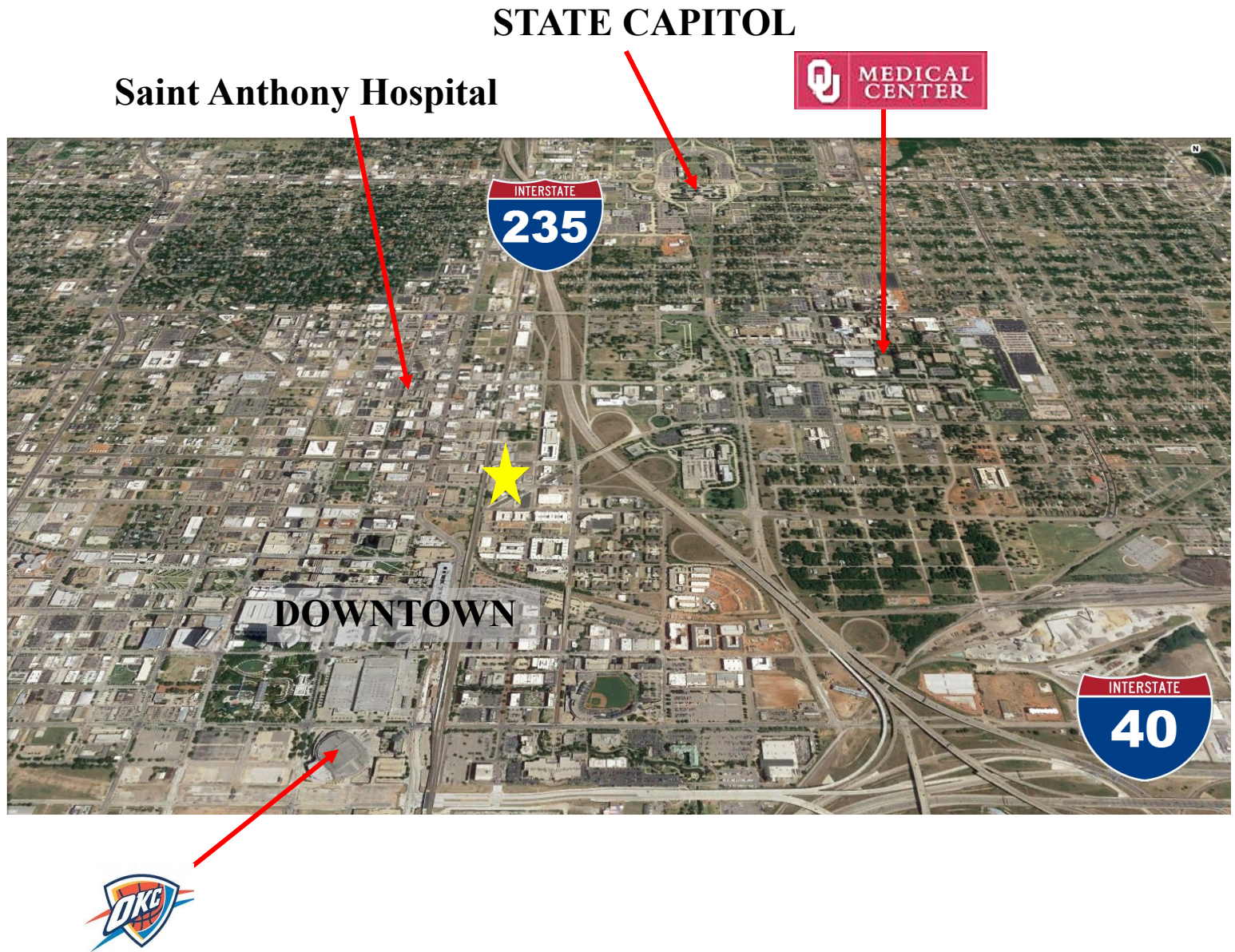


# FOR LEASE

# RETAIL/OFFICE/STORAGE

621 N Oklahoma, Oklahoma City, OK

16,000 SF



**FOR MORE INFORMATION  
CONTACT:**  
**Troy Humphrey - 405.219.7500**  
thumphrey@LRCRE.com

114 N.W. 6<sup>th</sup> Street, Suite 206  
Oklahoma City, OK 73102  
Office: 405.231.5700  
Facsimile: 405.231.5701  
www.LRCRE.com

The information above is believed to be accurate and reliable but is not warranted and may change without notice. Land Run Commercial Real Estate Advisors, LLC makes no guarantees, warranties or representations about the property and recommends tenants independent investigation as to the accuracy thereof.



# FOR LEASE RETAIL/OFFICE/STORAGE

621 N Oklahoma, Oklahoma City, OK

16,000 SF

SITE: 16,000 sf building plus  
32,500sf yard



Adjacent 28,000 sf fenced yard  
available if needed



**FOR MORE INFORMATION  
CONTACT:**  
**Troy Humphrey - 405.219.7500**  
thumphrey@LRCRE.com

114 N.W. 6<sup>th</sup> Street, Suite 206  
Oklahoma City, OK 73102  
Office: 405.231.5700  
Facsimile: 405.231.5701  
www.LRCRE.com