

COLONIAL LANE OFFICE

1629 W. Avenue J #106

FOR LEASE



Valley Realty

Lancaster, CA 93534



PROPERTY OVERVIEW

Colonial Lane Medical & Professional Building. Suite 106 is available in this prominent medical and professional office building that offers ample parking and is located across the street from Antelope Valley Hospital! This suite offers a very functional floor plan with a generous waiting room, multiple exam rooms, separate rear access and more.

PROPERTY DETAILS

BLDG SIZE:	18,510+/- rsf
AVAILABLE:	
Suite 106:	1,965+/-rsf @ \$1.35/rsf/mo
LEASE TYPE:	NNN (\$0.35/sf)
YEAR BUILT:	2002
PARKING:	5/1000
ZONING:	OP (Office Professional)

FOR MORE INFORMATION CONTACT:

Harvey Holloway - BRE #00594721
harvey@cbcvalleyrealty.com

Direct 661.948.2644 x 22 **Main** 661.948.2644 42402 N. 10th Street West #E
Fax 661.945.2524 **Cell** 661.609.8173 Lancaster, CA 93534

WWW.CBCValleyrealty.com

Coldwell Banker Commercial and the Coldwell Banker Commercial Logo are registered service marks licensed to Coldwell Banker Real Estate LLC. Each Office is Independently Owned and Operated.

COLONIAL LANE OFFICE

1629 W. Avenue J #106

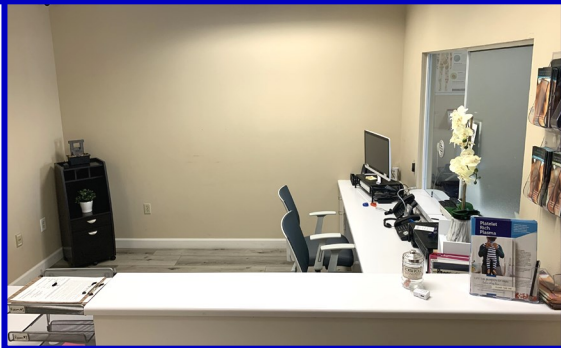
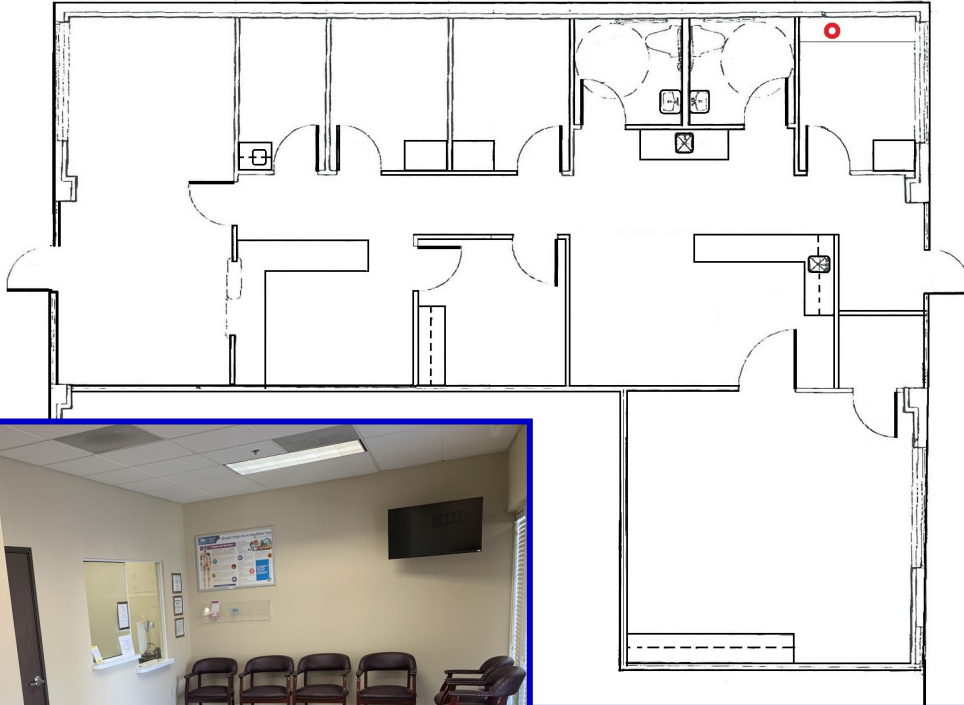
FOR LEASE



Lancaster, CA 93534

Valley Realty

1,964+/- rsf



FOR MORE INFORMATION CONTACT:

Harvey Holloway - BRE #00594721
harvey@cbcvalleyrealty.com

Direct 661.948.2644 x 22 Main 661.948.2644
Fax 661.945.2524 Cell 661.609.8173

42402 N. 10th Street West #E
Lancaster, CA 93534

WWW.CBCValleyrealty.com

Coldwell Banker Commercial and the Coldwell Banker Commercial Logo are registered service marks licensed to Coldwell Banker Real Estate LLC. Each Office is Independently Owned and Operated.