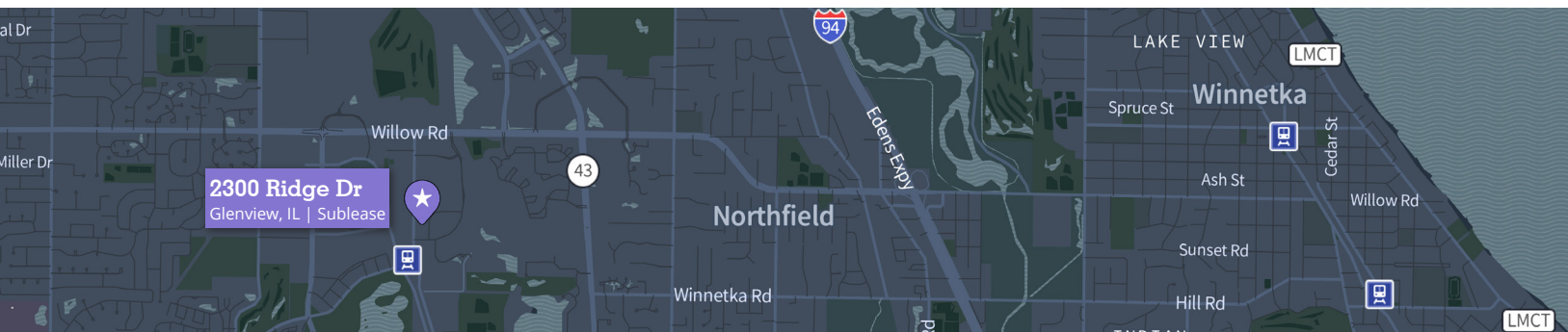
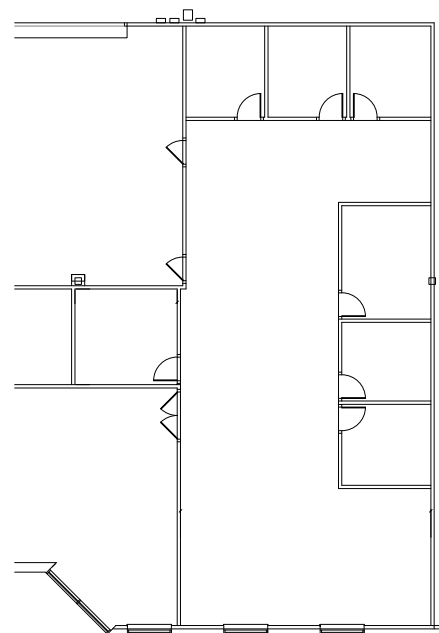


**AVISON
YOUNG**

2300 Ridge Dr
Glenview, IL | Sublease

Join the Suburb's Newest Padel Club, Alma Padel

- Available space: 2,565 sf
- 28-foot ceilings and floor-to-ceiling windows
- This luxury padel club space in Glenview provides access to a high-income, health-conscious audience with built-in foot traffic.
- Alma Padel offers various amenities, including lounge areas, bars, and a café
- Prime location to thrive within a wellness-focused environment designed to drive revenue growth.
- Ample parking
- 5-minute walk to the Glenview Metra Station



**For more information,
please contact:**

Tim Henry
Principal
+1 312 273 9481
tim.henry@avisonyoung.com