

PANORAMA



COMMERCIAL CONDO FOR LEASE IN VILLERAY

1461, Jean-Talon Street East, Montreal
FOR LEASE

agencepanorama.ca

Highlights



Available immediately



Ideal for professionals



Located on the 2nd floor



Close to all essential services



Located in the Villeray district



Currently converted into a physiotherapy clinic



Easily accessible by public transportation



Located across from the Fabre metro station and next to Jean-Talon Hospital



1461, Jean-Talon Street East, Montreal

PANORAMA



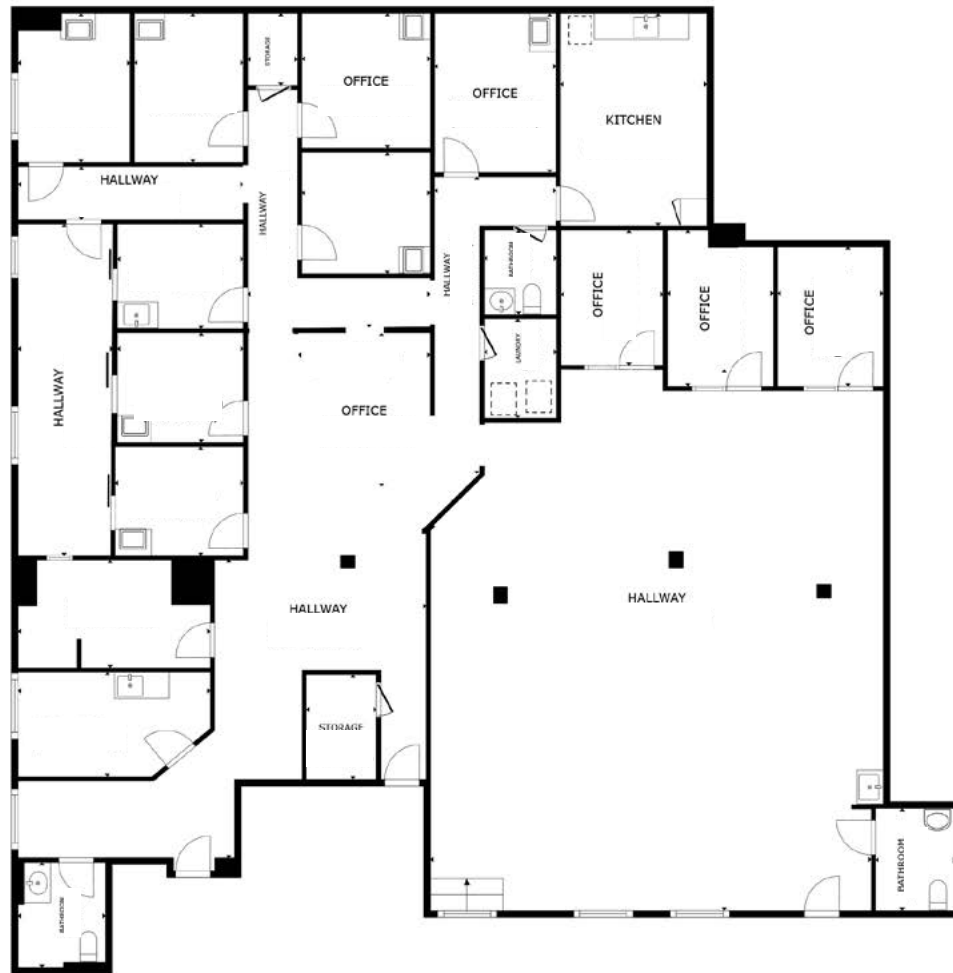
Property summary

Available Suite	2 nd floor
Area	4,311 sq.ft.
Availability	Immediate

Financial information

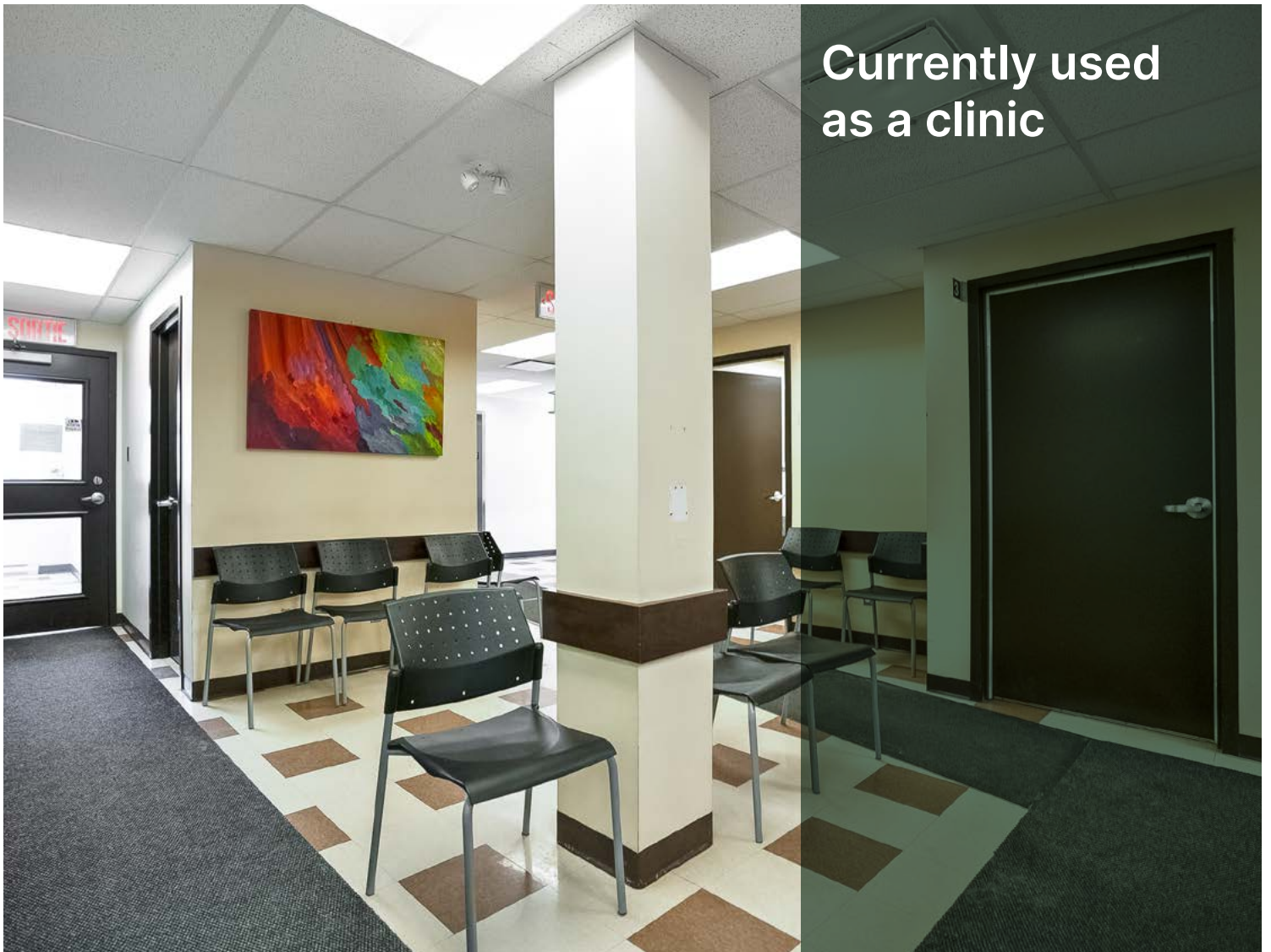
Base rent	\$15.00 /sq.ft.
Additional rent	\$10.03 /sq.ft.

Floor plan





Available immediately





4,311 sq.ft.

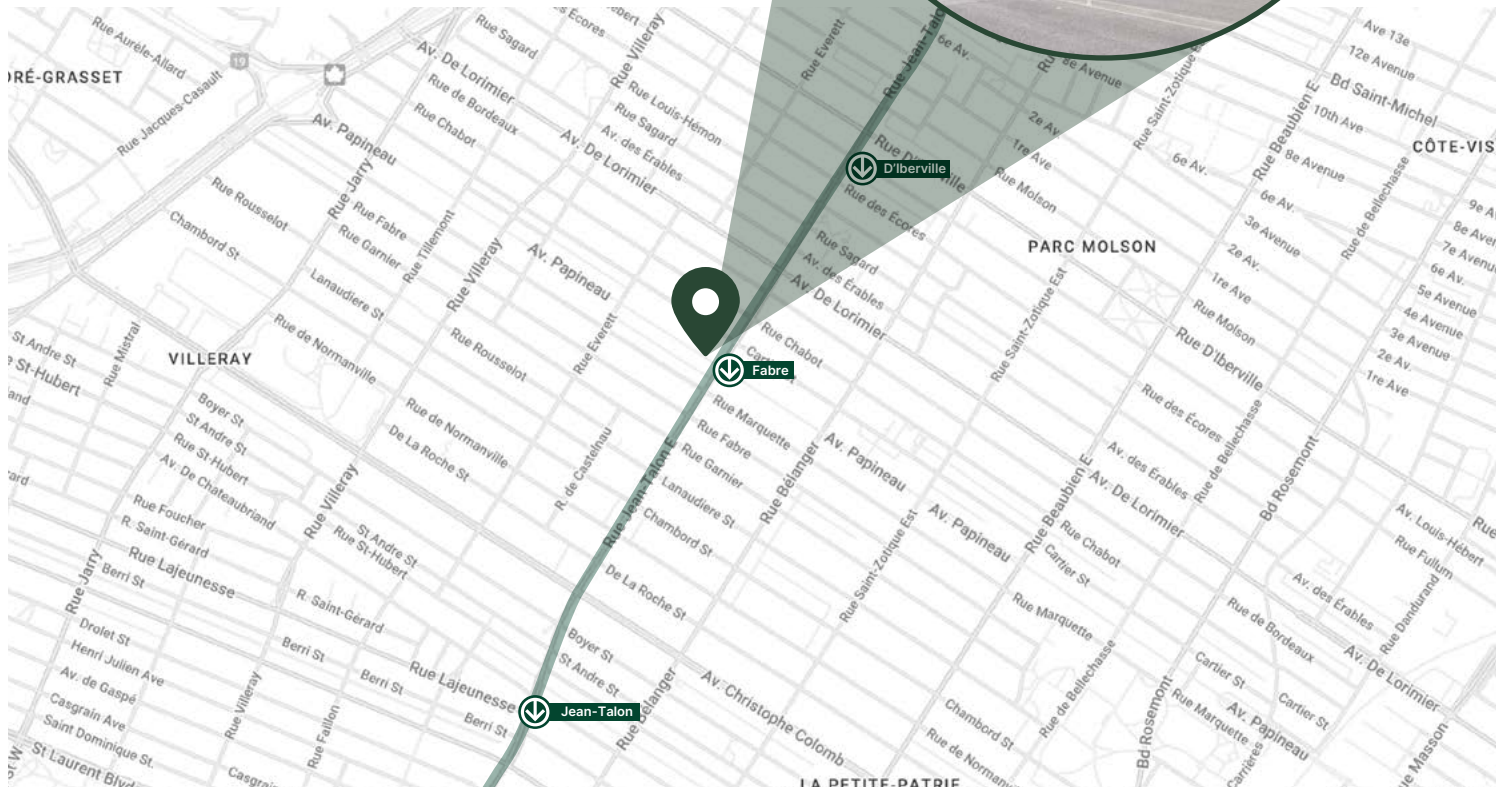


1461, Jean-Talon Street East, Montreal

PANORAMA

Location

Located in Villeray, 1461 Jean-Talon Est has a strategic location just steps from Jean-Talon Hospital and directly across from the Fabre metro station, offering easy access by public transit. This address ensures ideal visibility and accessibility.



Bright space on the 2nd floor of a pharmacy, perfect for professional offices or health services, next to the Jean-Talon hospital.

PANORAMA



1461, Jean-Talon Street East, Montreal
FOR LEASE

Contact us

Panorama, Real Estate Agency

1100-1200, avenue McGill College
Montréal (Québec) H3B 4G7

514.289.8222

agencepanorama.ca