



1847 SE Port Saint Lucie Blvd. Port Saint Lucie, FL 34952

For Lease
3135 S Us Hwy 1
Fort Pierce, Fl

Landlease: \$180k per Yr or \$42SF
NNN Built to Suit



Alex Rodriguez- Torres

Phone: (772-353-0635) | Email: RTEincorporated@aol.com

1847 SE Port Saint Blvd, Port Saint Lucie, FL 34953

W W W . R T - C R E . C O M



1847 SE Port Saint Lucie Blvd. Port Saint Lucie, FL 34952

For Lease
3135 S Us Hwy 1
Fort Pierce, Fl
Landlease: \$180k per Yr or \$42SF
NNN Built to Suit



Alex Rodriguez- Torres

Phone: (772-353-0635) | Email: RTEincorporated@aol.com

1847 SE Port Saint Blvd, Port Saint Lucie, FL 34953

WWW.RT-CRE.COM

For Lease
3135 S Us Hwy 1
Fort Pierce, Fl
Landlease: \$180k per Yr or \$42SF
NNN Built to Suit

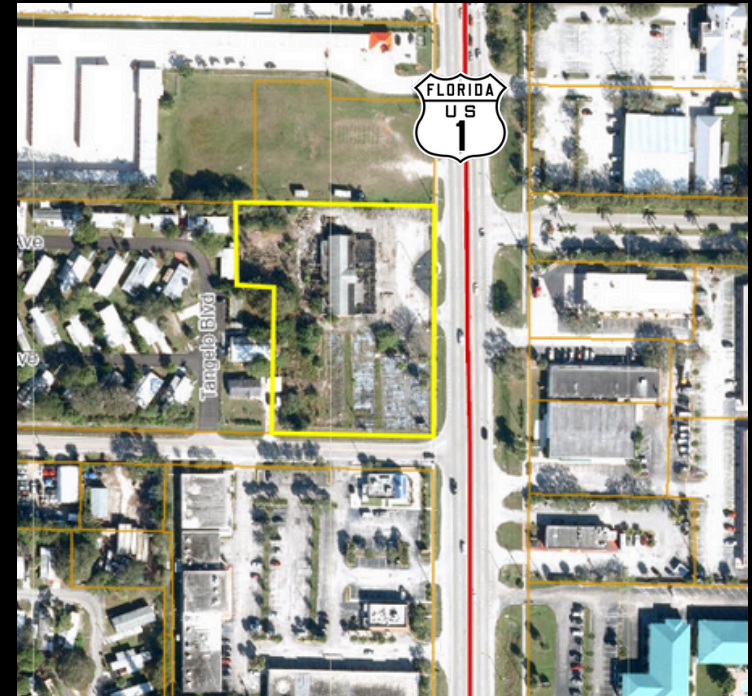
Property Details

Land Size : 2.04 Acres

Building Size : 4,901 SF

Year Built : 1954

Zoning : Commercial General



Alex Rodriguez- Torres

Phone: (772-353-0635) | Email: RTEincorporated@aol.com

1847 SE Port Saint Blvd, Port Saint Lucie, FL 34953

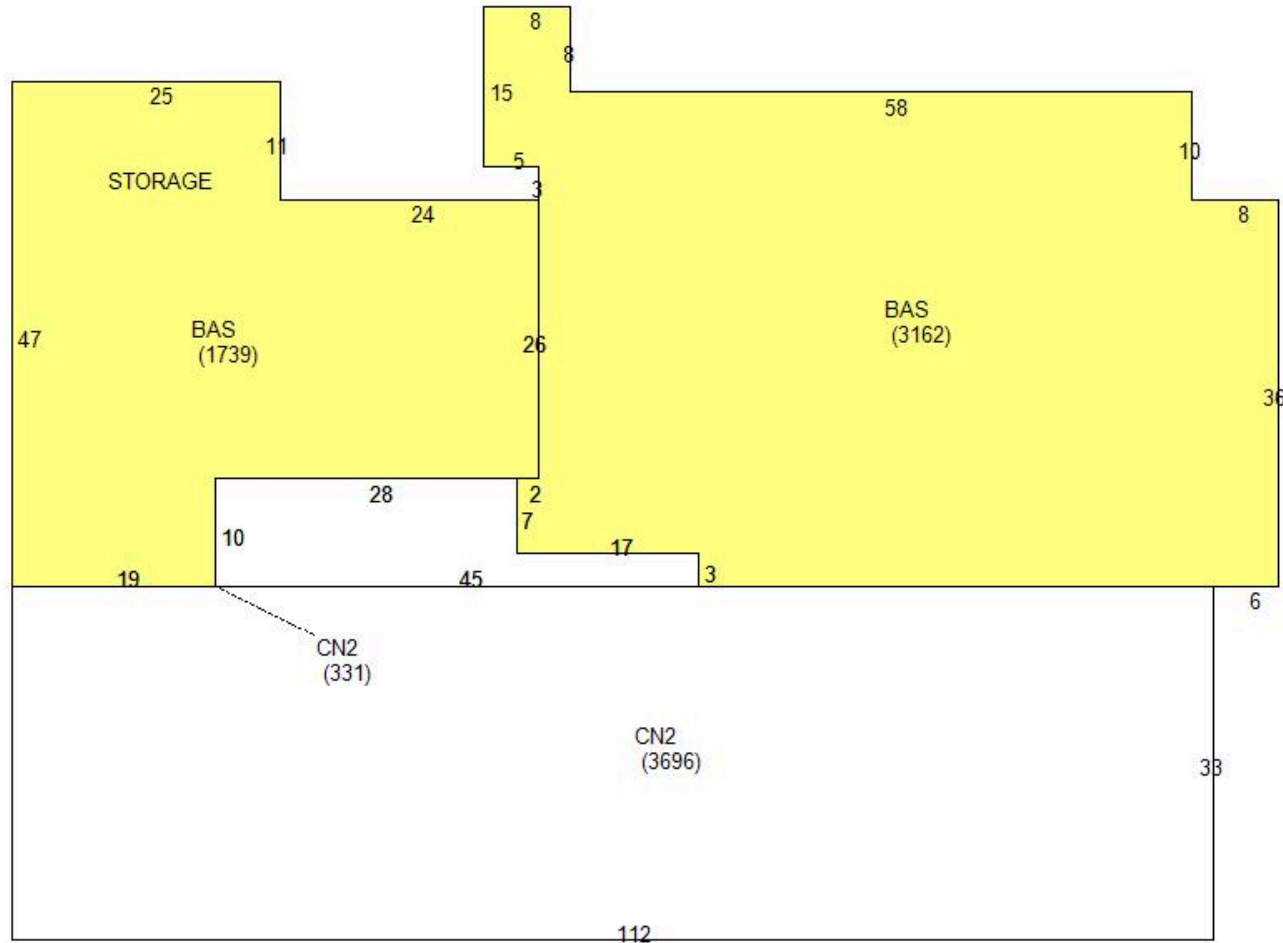
WWW.RT-CRE.COM



1847 SE Port Saint Lucie Blvd. Port Saint Lucie, FL 34952

For Lease
3135 S Us Hwy 1
Fort Pierce, Fl

Landlease: \$180k per Yr or \$42SF
NNN Built to Suit



Alex Rodriguez- Torres

Phone: (772-353-0635) | Email: RTEincorporated@aol.com

1847 SE Port Saint Blvd, Port Saint Lucie, FL 34953

WWW.RT-CRE.COM

1847 SE Port Saint Lucie Blvd. Port Saint Lucie, FL 34952

For Lease
3135 S Us Hwy 1
Fort Pierce, Fl
Landlease: \$180k per Yr or \$42SF
NNN Built to Suit



Alex Rodriguez- Torres

Phone: (772-353-0635) | Email: RTEincorporated@aol.com

1847 SE Port Saint Blvd, Port Saint Lucie, FL 34953

WWW.RT-CRE.COM



Disclaimer Statement

For Lease

3135 S Us Hwy 1

Fort Pierce, Fl

**Landlease: \$180k per Yr or \$42SF
NNN Built to Suit**

PRESENTED BY:

Alex Rodriguez- Torres

Phone: (772-353-0635) |

Email: RTEincorporated@aol.com

1847 SE Port Saint Blvd, Port Saint Lucie, FL 34953



1847 SE Port St. Lucie Blvd

Port Saint Lucie, FL 34952

www.RT-CRE.com