



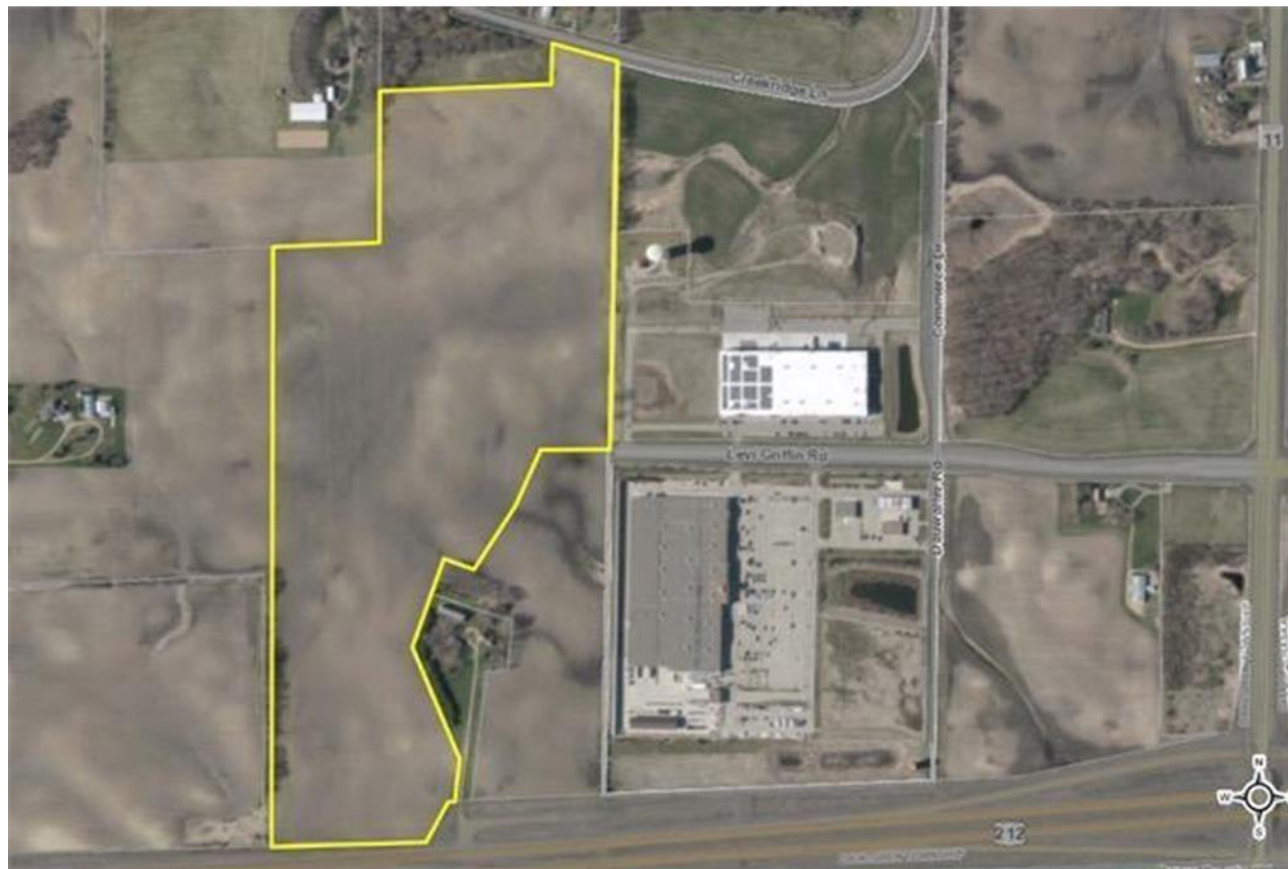
xxx Hwy 212, Carver, MN 55315





Key Features:

- List Price: \$13,800,000
- 69 acres
- Guided for Commercial and Industrial
- Utilities are contiguous
- Set to be annexed into city of Carver
- Great exposure to US Hwy 212
 - 14,200 DTA (2019)
- Frontage on Hwy 212; Levi Griffin Rd; & Creek Ridge Lane
- 629' of frontage along Hwy 212;

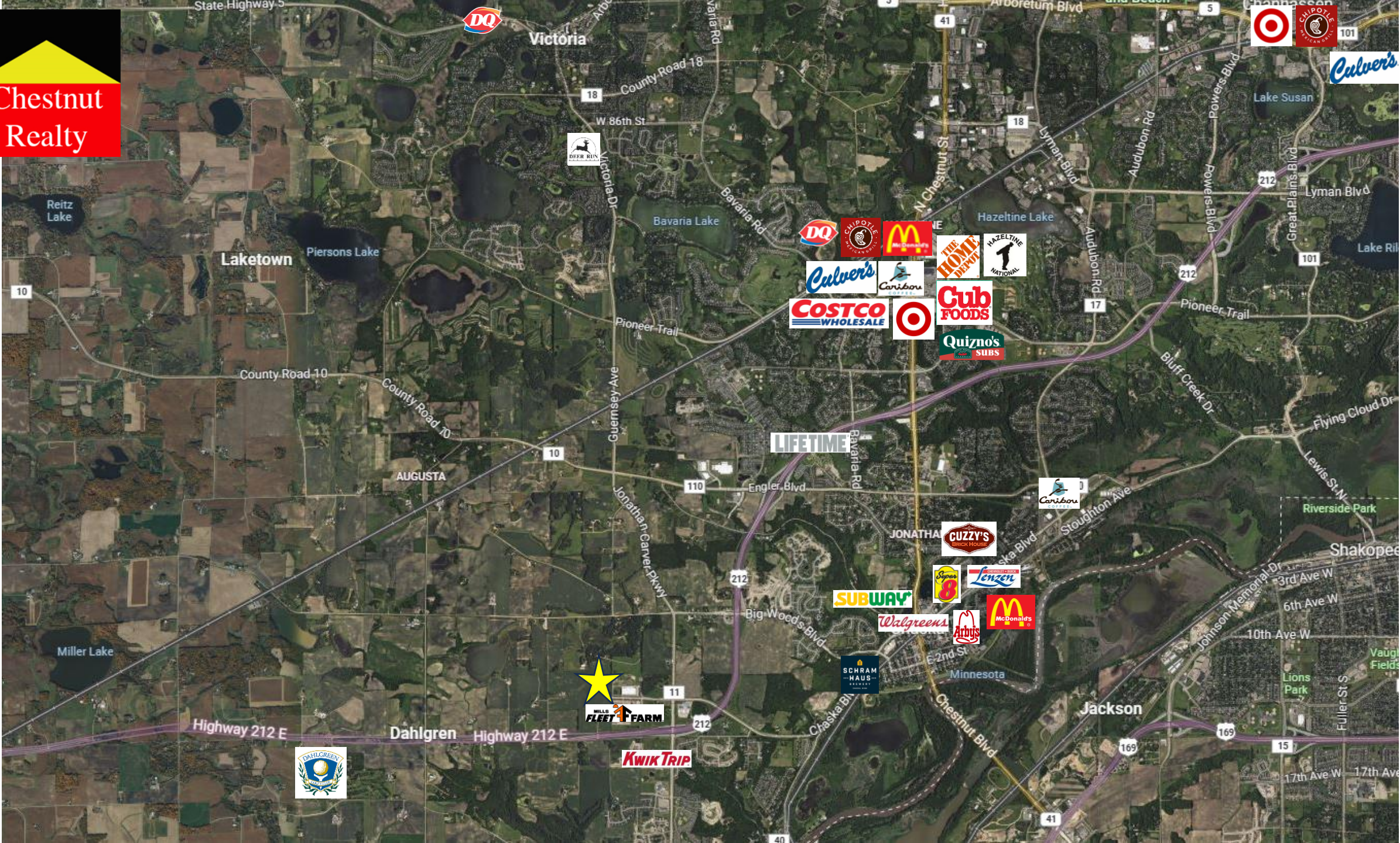




Location:

- Eastern Carver County
- Adjacent to cities of Carver and Chaska
 - Approximate population of 35,000
- Frontage on US Hwy 212
- 14 miles to Interstate 494
- 22 miles to Interstate 35W
- 25 miles to MSP International
- 29 miles to Minneapolis
- 37 miles to St. Paul







Demographics

Carver County

- Estimated population of 110,034
- Median household income \$116,308

City of Carver

- Estimated population of 6,395
- Median household income \$125,123

City of Chaska

- Estimated population of 28,262
- Median household income \$99,988





Contact Info:

Chestnut Realty Inc.

www.ChestnutRealty.com

952-448- 3344

Haasken Family Realtors

Nathan Haasken: 952-448-4925

Christy Haasken-Schuler: 952-448-4569

Chad Haasken: 952-368-0422

Cal Haasken: 952-448-2417

Info@ChestnutRealty.com

